

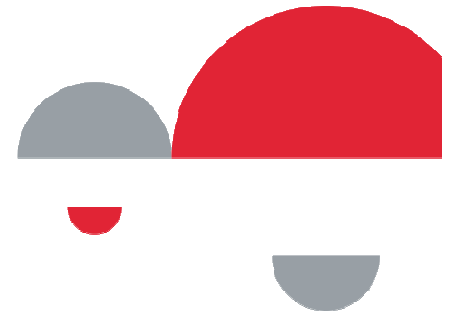
BIM & The Contractor

Setting the Transformation Right for Productivity

Edmund Leong, Manager (BIM)

BuildSmart Conference 2014
@Singapore Construction Productivity Week

15-Oct-2014

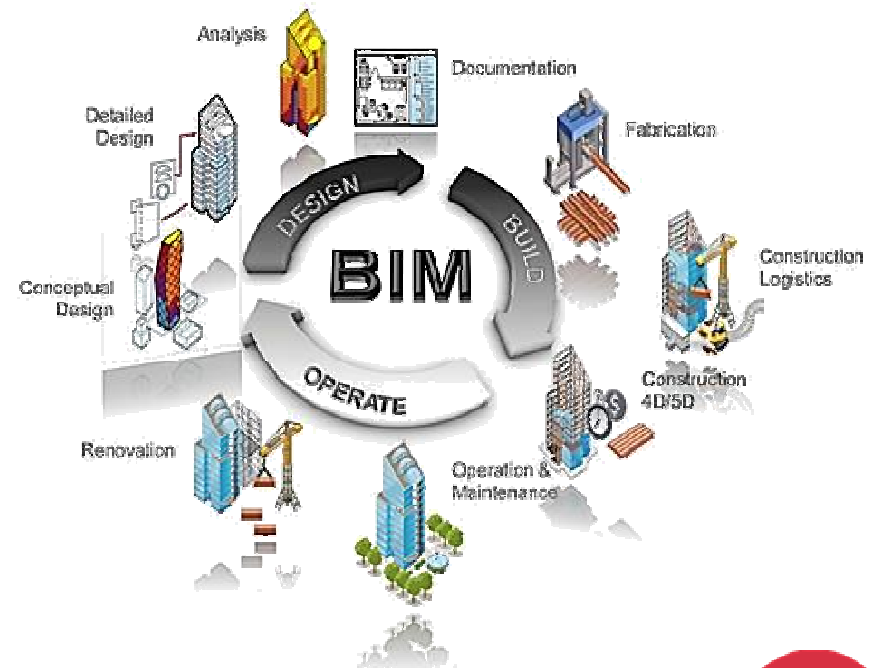
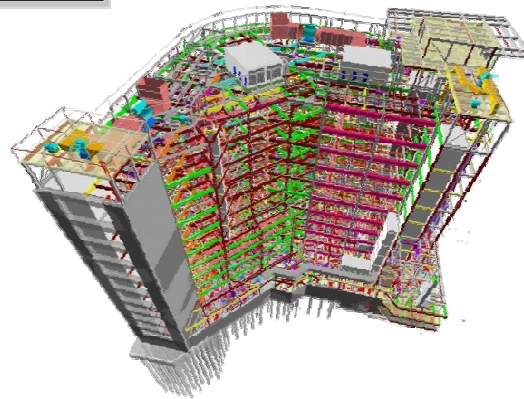
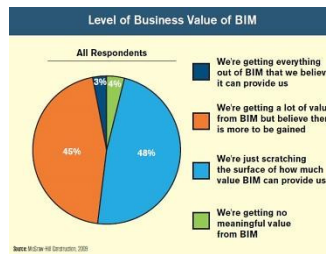
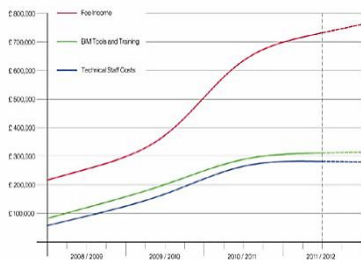
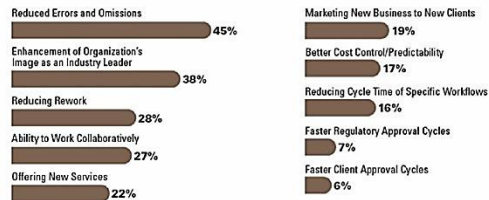


BIM Benefits

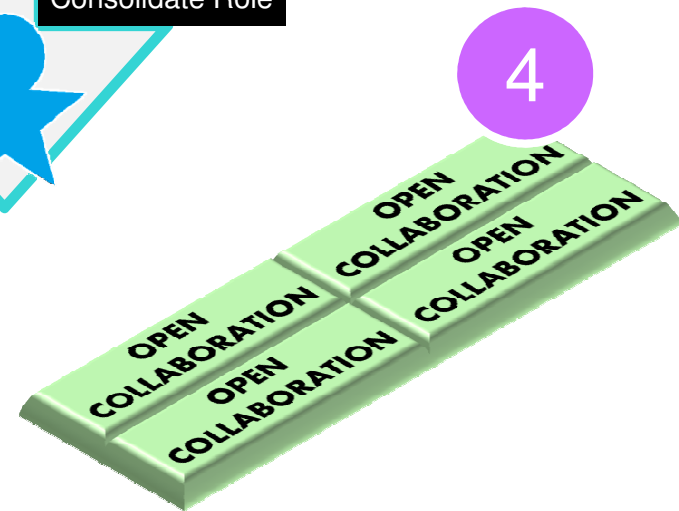
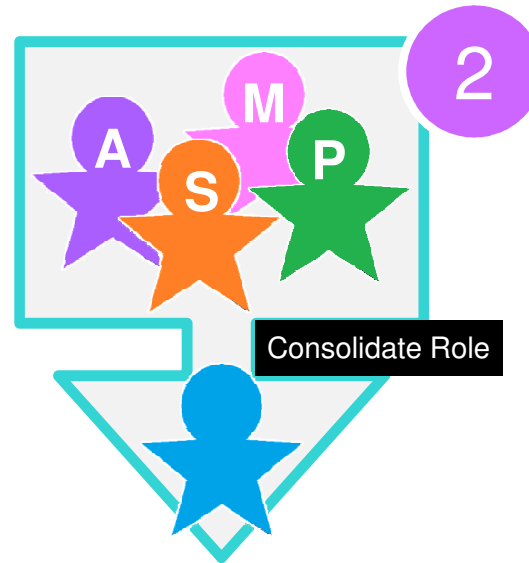
Short term benefits are available quickly to users

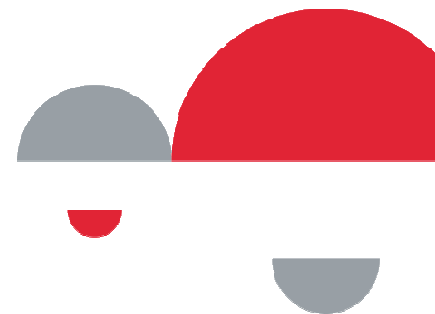
Short-Term BIM Benefits (By Percentage of Users Experiencing Benefit at a High/Very High Level)

Source: McGraw Hill Construction, 2013







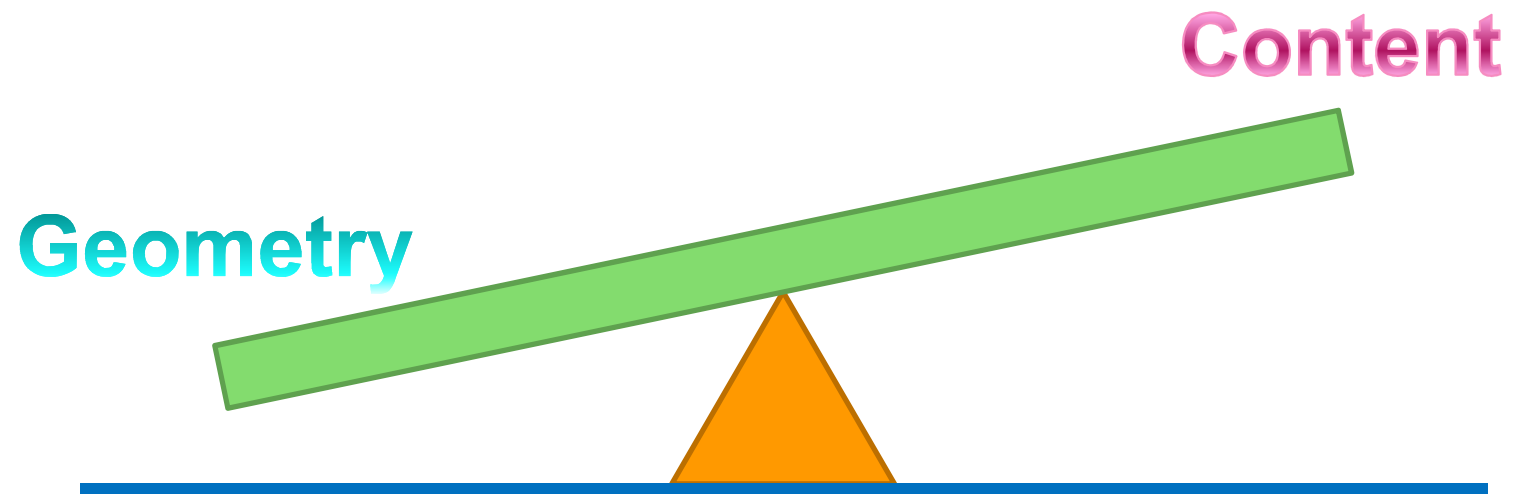


INFORMATION information information
information INFORMATION information
information information
information information information
information information information
information information information
information information information
information information information

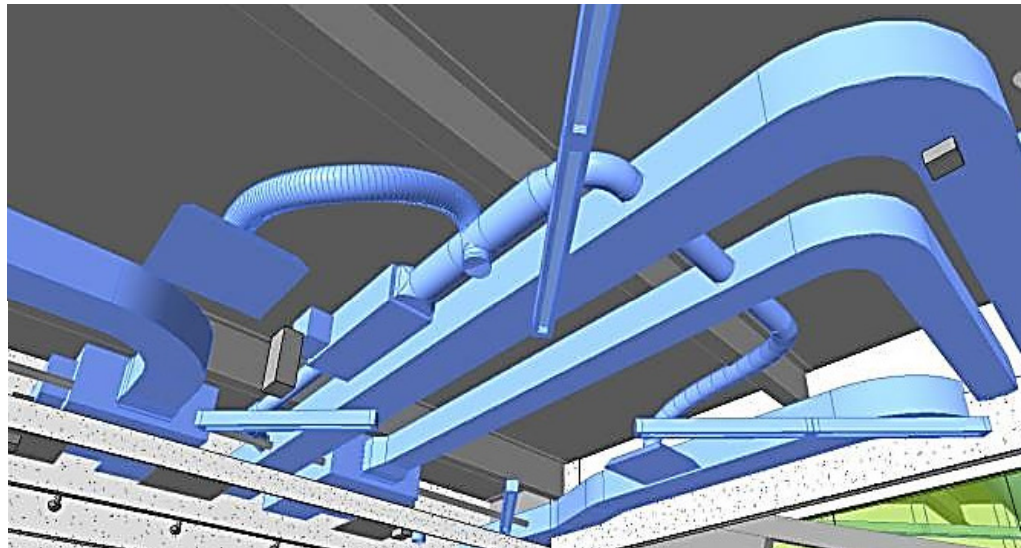
Information



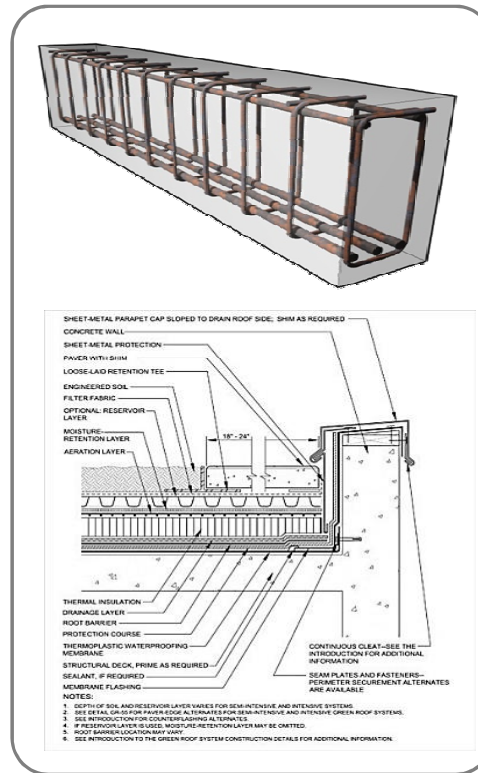
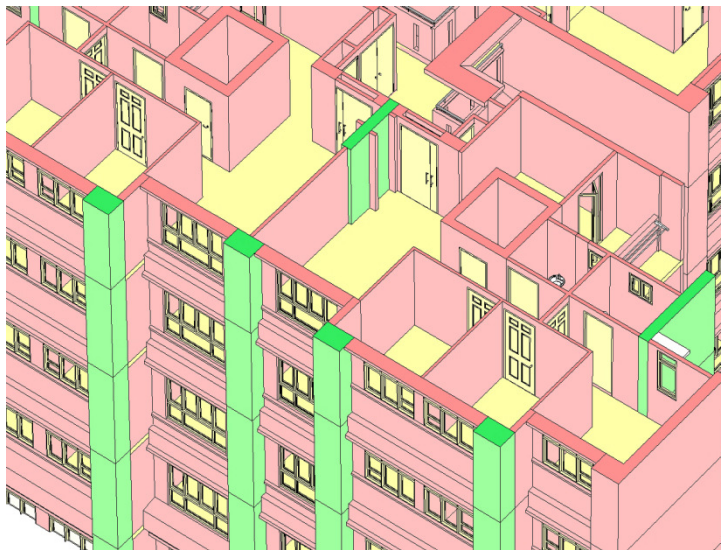
Making a Balance in Modeling



Geometry or Content ?



Geometry or Content ?



3C35

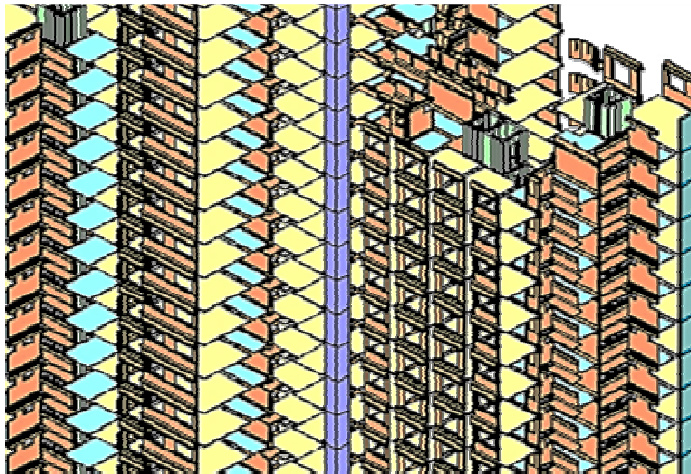
1BH102

K1F-3

4A1-PB(E)-1A

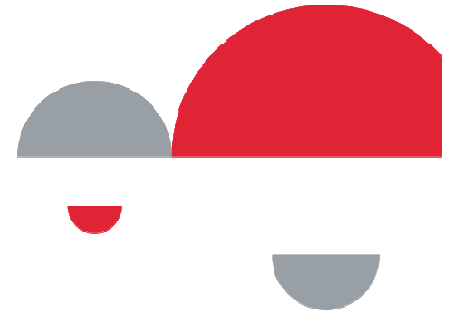
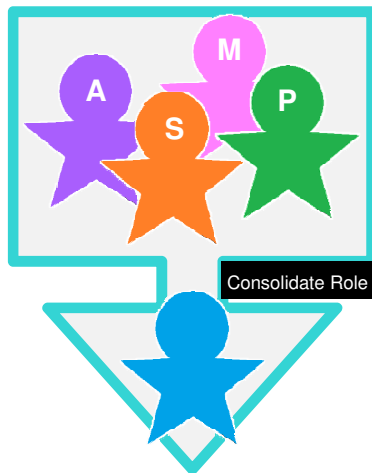
Geometry or Content ?

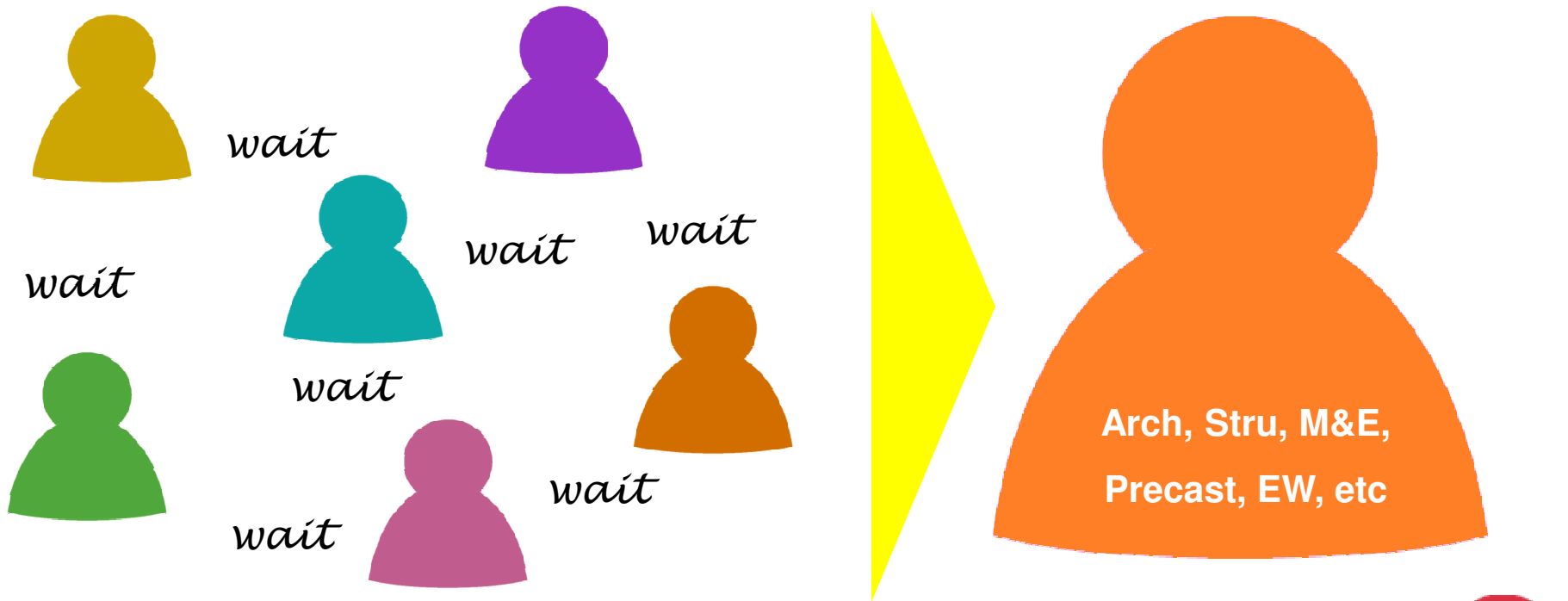
- Information → Derived or Inferred
- Sufficient information → Better Productivity



K1F-2		Precast Concrete	0.70 m ²	1762053
K1F-2	3A-PB(E)-1A	Precast Concrete	0.72 m ²	1806554
K1F-2	4A1-PB(E)-1A	Precast Concrete	0.82 m ²	205343
K1F-2		Precast Concrete	0.88 m ²	2191171
K1F-2		Precast Concrete	0.95 m ²	2376593
K1F-2: 257				
K1F-3		Precast Concrete	1.37 m ²	3428079
K1F-3: 49				
K1F-4		Precast Concrete	1.51 m ²	3765581
K1F-4	4A1-PB(E)-1A	Precast Concrete	1.25 m ²	3133101
K1F-4		Precast Concrete	1.31 m ²	3287235
K1F-4: 208				
K1F-5	4A1-PB(E)-1A	Precast Concrete	0.69 m ²	1734661
K1F-5	4A3-PB(E)-2A	Precast Concrete	0.71 m ²	1786458
K1F-5	4A3-PB(E)-1A	Precast Concrete	0.72 m ²	1793508
K1F-5: 104				
K1HF-1	2A-PB(E)-1A	Precast Concrete	0.33 m ²	0819329
K1HF-1	2A-PB(E)-1A(H)	Precast Concrete	0.33 m ²	0819329
K1HF-1: 49				
K1HF-2	2A-PB(E)-1A	Precast Concrete	0.50 m ²	1258195
K1HF-2	2A-PB(E)-1A(H)	Precast Concrete	0.50 m ²	1258195
K1HF-2: 49				
K1HF-3		Precast Concrete	0.60 m ²	1497301
K1HF-3: 104				



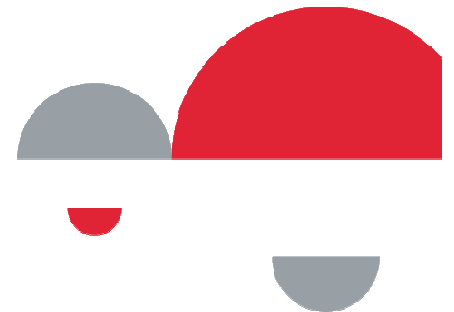




Single Role for "Arch/Stru/M&E/Precast" Modelling

- Accountability for Modeling Works
- "Big-Room" Meetings → Single Resource Support
- Challenges : Training Roadmap

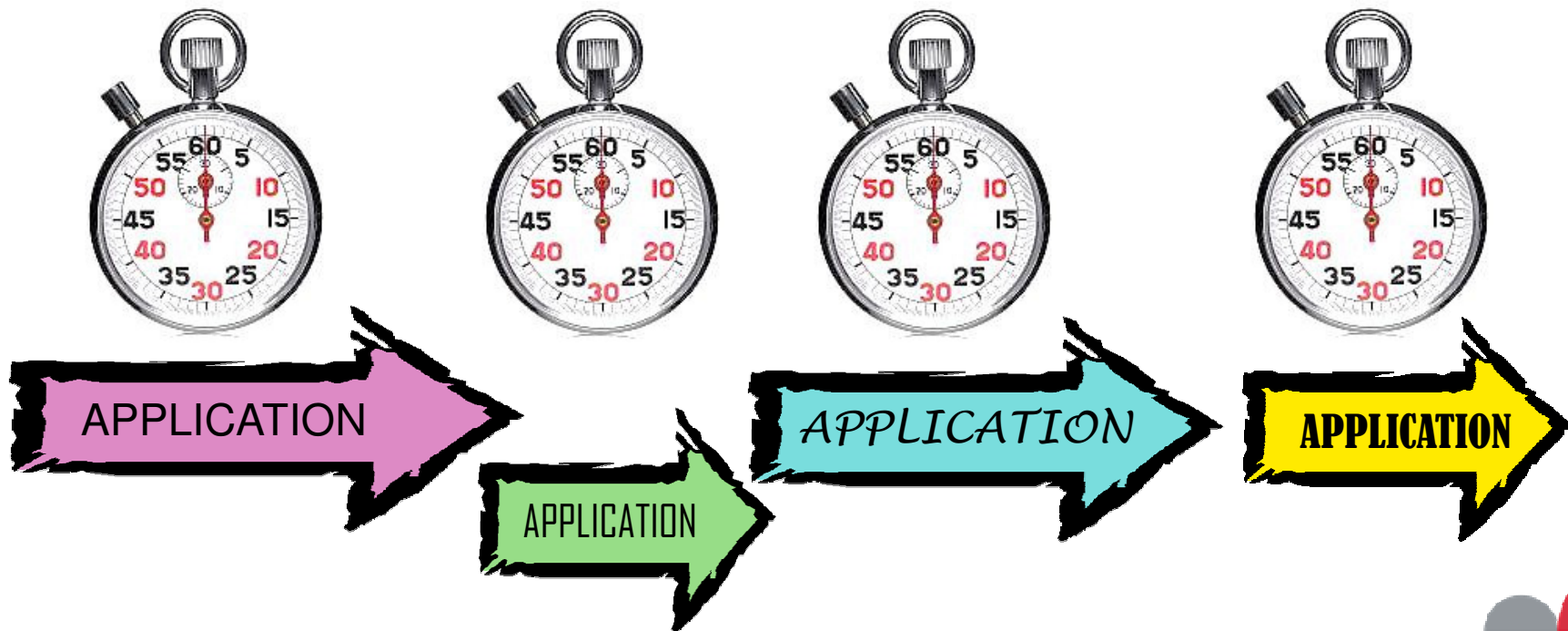




Parallel deployment affect Progress and Performance

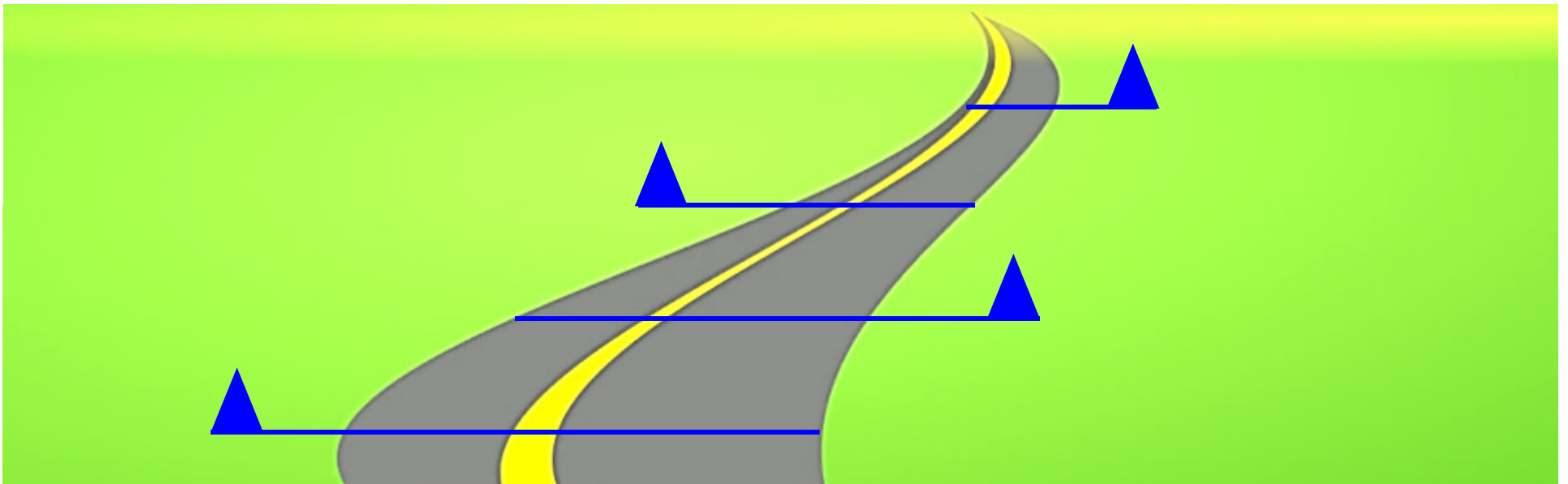


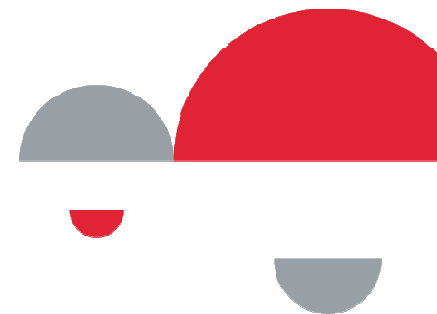
Consider : Concept in “Big-BIM-Little-BIM”



BIM Journey

Your Destination



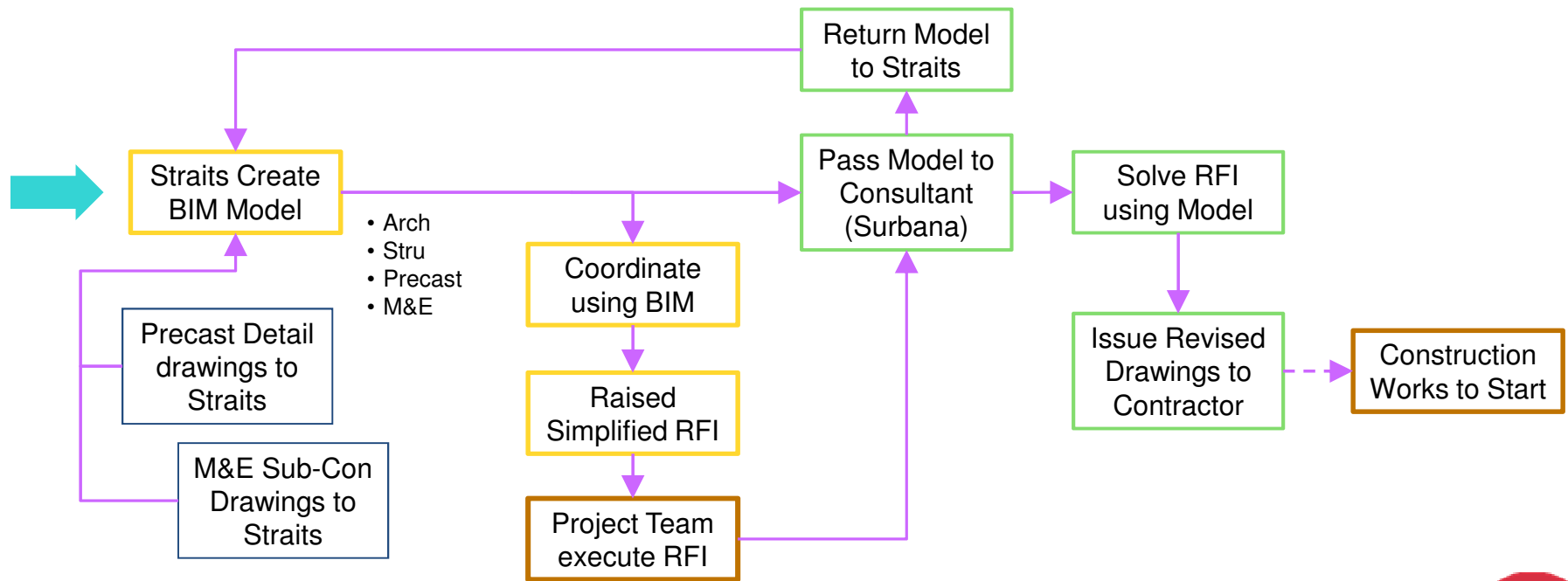


Open Collaboration & Sharing with Consultant

- HDB Bukit Merah RC-53
- The Situation
 - Consultant did not have the Model
 - Contractor wants turnaround on RFI in 1-Revision
- Create specialized Objects into Project Model
 - Information for Communication and Discussion

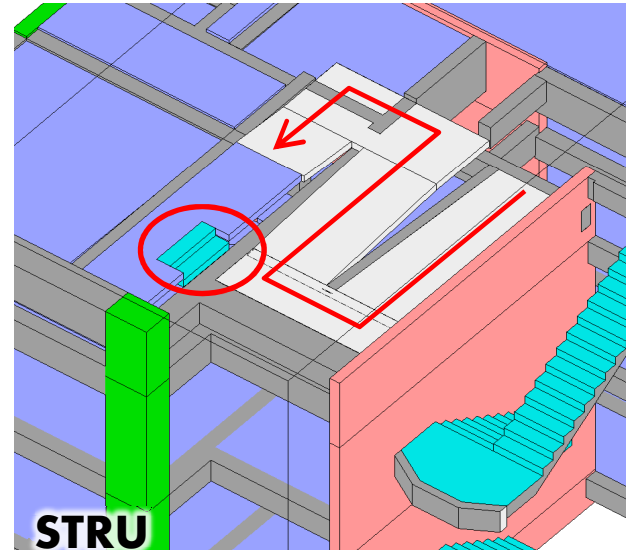
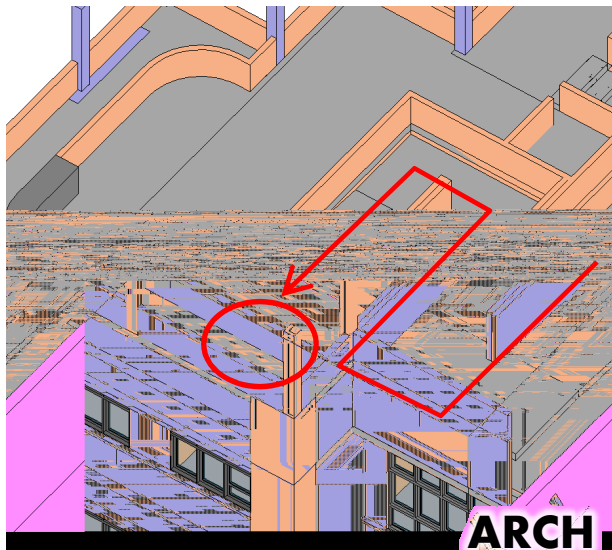


Redefining the process

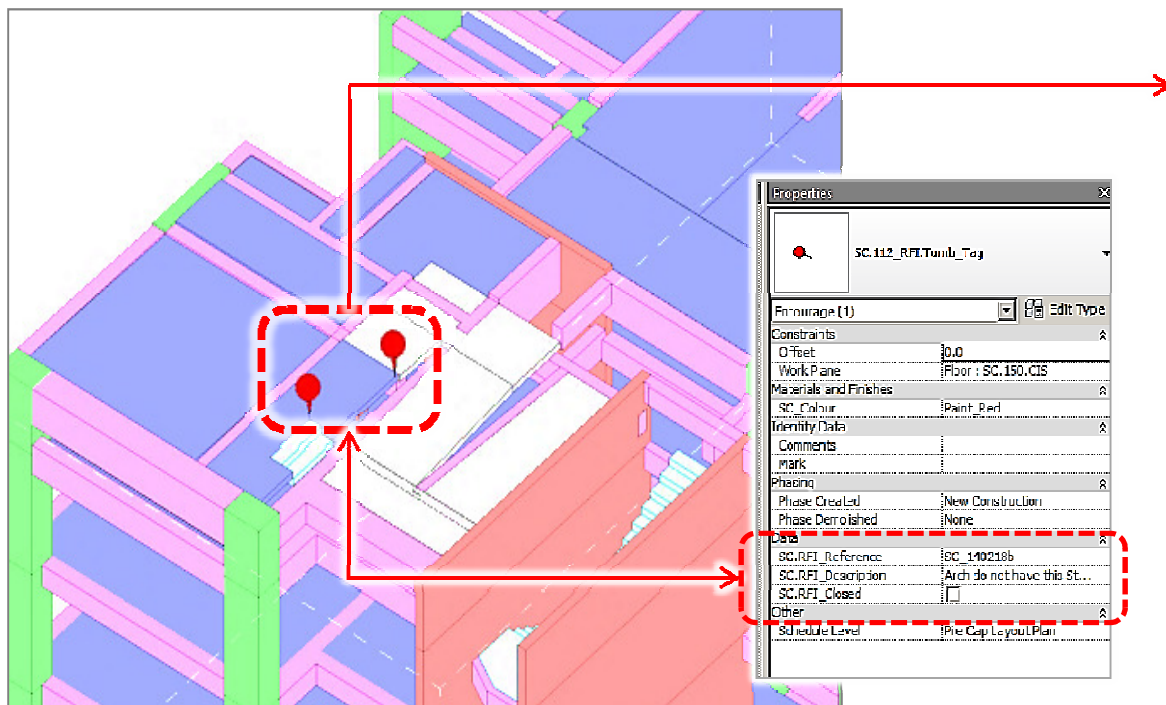


Confirmation

- RFI and Design Intent



Simplified RFI with RFI-Thumb Tag



Properties

SC_112_RFI_Thumb_Tag

Finish (1) Edit Type

Constraints

Offset 0.0

Work Plane Floor : SC_150.CIS

Materials and Finishes

SC Colour Paint Red

Identity Data

Comments

Mark

Phasing

Phase Created New Construction

Phase Demolished None

Data

SC.RFI_Reference SC_140218b

SC.RFI_Description Arch do not have this St...

SC.RFI_Closed ☐

Other

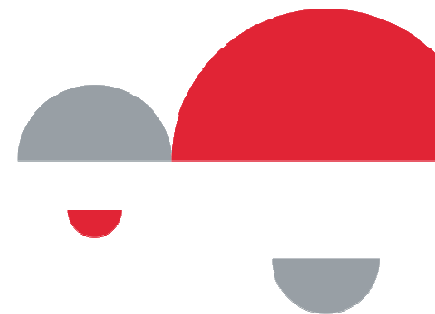
Schedule Level 1st Cap Layout Plan

<RFI Progress Schedule>

A	B	C	D
Level	SC.RFI_Reference	SC.RFI_Description	SC.RFI_Closed
ROOF TERRACE LEVEL	SC_140218b	Arch do not have this Stairs	<input type="checkbox"/>
ROOF TERRACE LEVEL	SC_140218a	Clarify the end of RAMP	<input type="checkbox"/>



Closing



Conventional Practise

CONSULTANTS

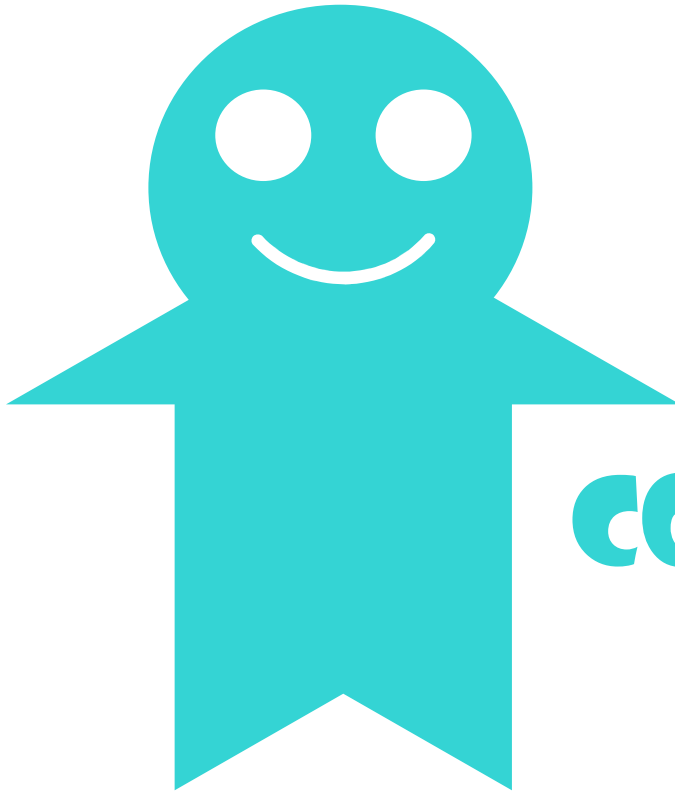


BIM



CONTRACTOR



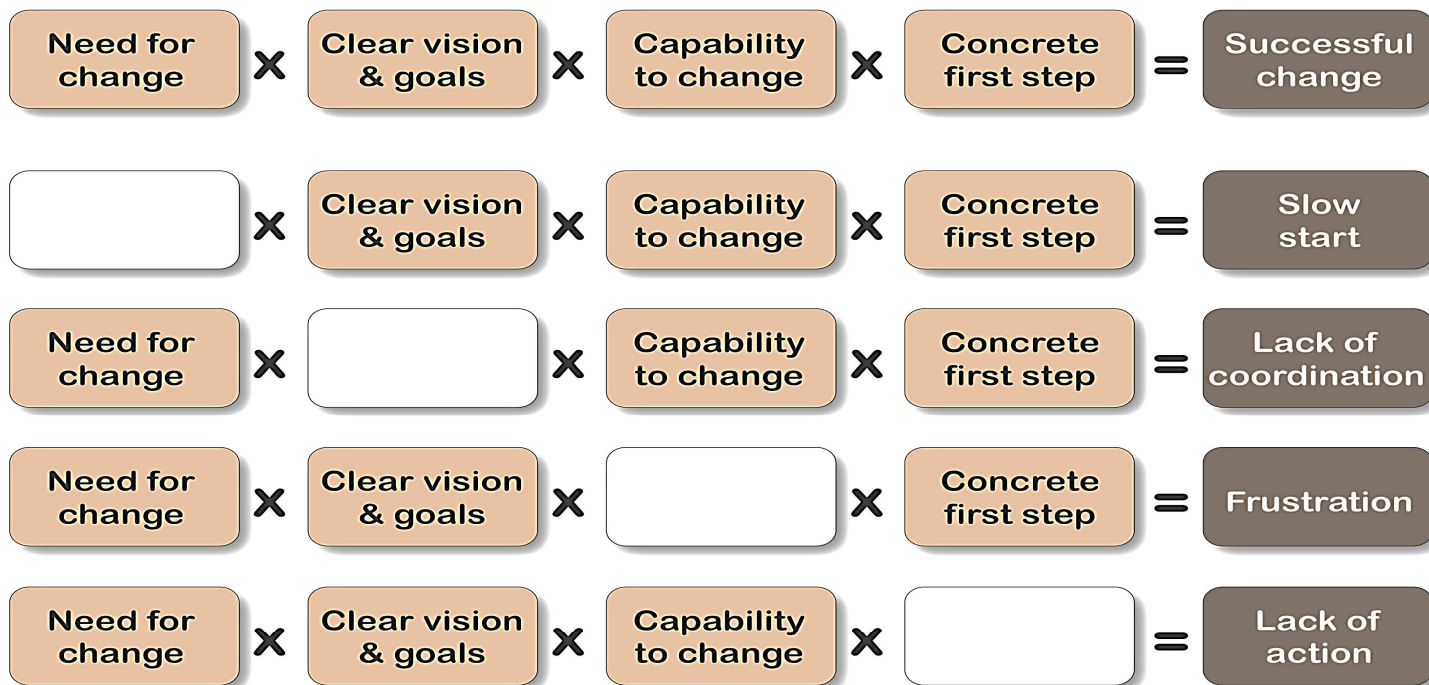


CONTRACTOR



Formula of change

Variation of the Gleicher's Formula



Variation of the Gleicher's Formula, Source: Dannemiller, K. D., and Jacobs, R. W. (1992). Changing the way organizations change: A revolution of common sense. The Journal Of Applied Behavioral Science, 28(4), 480-498.



End of Presentation

