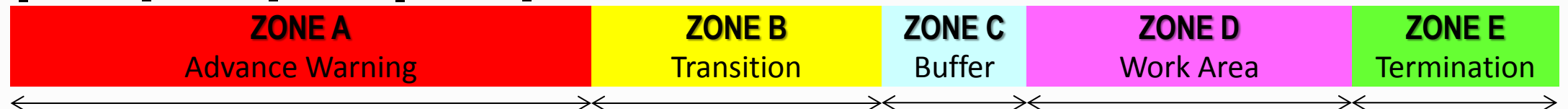
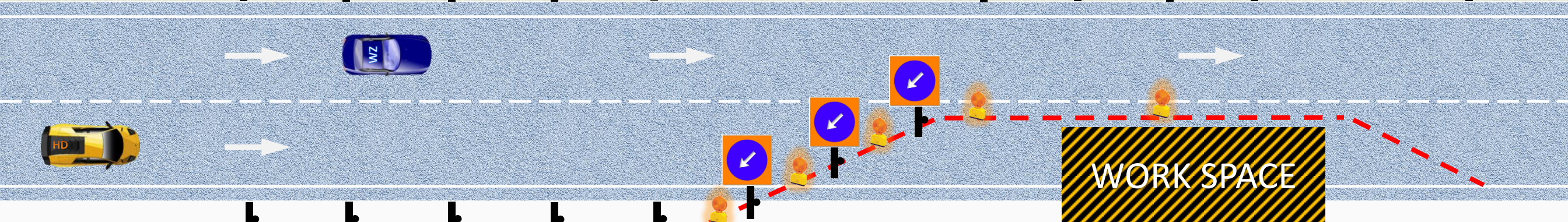


TRAFFIC MANAGEMENT DURING CONSTRUCTION.

When ?

- During road construction
- During road maintenance
- During utilities work

Traffic Management Plan (TMP) is a site-specific plan that covers the design, implementation, maintenance and removal of temporary traffic management (TTM) measures while work or activity is carried out in the road corridor (road, footpath or berm).



General Sign Arrangement During Construction

Advance Warning Distance	Spacing of Devices
<ul style="list-style-type: none"> • Expressways – 1 ~ 2 km • Rural Road – 350~500m • Urban Road- 250~400m 	<ul style="list-style-type: none"> • Expressways - 50m apart • Rural Road - 50m apart • Urban Road - 15m apart
<ul style="list-style-type: none"> • 1st Sign • 2nd Sign • 3rd Sign • 4th Sign • 5th Sign 	<ul style="list-style-type: none"> - Identification Sign - Info sign - Speed Sign - Info Sign - Speed Sign

Taper Length			
Posted Speed	Lane Width		
	3m	3.5m	3.75m
30km/j	17m	20m	22m
40km/j	30m	35m	40m
50km/j	50m	55m	60m
60km/j	70m	80m	90m
70km/j	130m	155m	165m
80km/j	150m	175m	190m
90km/j	170m	195m	210m

Distance Arbitrary

- Work Area Sign
- Speed Sign

- Info Sign

TRAFFIC CONTROL DEVICES	Temporary Diversion
	Short Term Diversion
	Long Term Diversion

- Mandatory Advance Sign, other signs are advantageous to have

- Arrow Sign
- Cones with blinkers

- Arrow Sign
- Cones with blinkers



- Mandatory Advance Sign – Apply the full set

- Arrow Sign
- Plastic Barriers

- Plastic Barriers
- Delineators Strings and blinkers



- Mandatory Advance Sign – Apply the full set

- Arrow Sign
- Plastic Barriers
- Add Traffic Control Devices

- Concrete/Plastic Barriers
- Delineators Strings and blinkers



Prepared by :
Road Safety Audit Division
 Road & Bridge Engineering
 Specialist, Road Branch.
 Public Work Department.

Traffic Management Plan

Do's	Don'ts
 <ul style="list-style-type: none">- Good arrangement of traffic control	 <ul style="list-style-type: none">- Insufficient transition length
 <ul style="list-style-type: none">- Good arrangement of traffic devices- Sufficient temporary luminaries	 <ul style="list-style-type: none">- Inappropriate signage and traffic control devices arrangement.
 <ul style="list-style-type: none">- Barriers appropriate arrangement- Barriers serve as channelizing devices	 <ul style="list-style-type: none">- Workers and machineries exposed to hazard

Traffic Control Devices Criteria

Traffic Control Devices	Type/Where to use
Concrete Barrier	<ul style="list-style-type: none">- Work area contain heavy machineries / rigid structure / stock pile- Work area different level more than 1m
Plastic Barrier (interlock)	<ul style="list-style-type: none">- Work area different level less than 1m- Plastic barrier must be filled with water/sand
Blinker	<ul style="list-style-type: none">- Use on channelizing device
String delineator	<ul style="list-style-type: none">- Use as supplement on channelizing devices in outlining the correct vehicle path- Reflective unit minimum 75mm dimension
Warning lamps	<ul style="list-style-type: none">- Portable type and light emitted shall be yellow (amber)- Use on channelizing devices and signs
Floodlights	<ul style="list-style-type: none">- Light work activities or hazardous area at night- Providing temporary luminaries at certain location
Flagmen	<ul style="list-style-type: none">- To stop, proceed or slowing the traffic- Flagger should be wearing visible clothing (orange or fluorescent)
Temporary Signage	<ul style="list-style-type: none">- High Intensity Prismatic Retro-reflective sheeting on their faces

