



12th MP

Health Facility Planning & Development



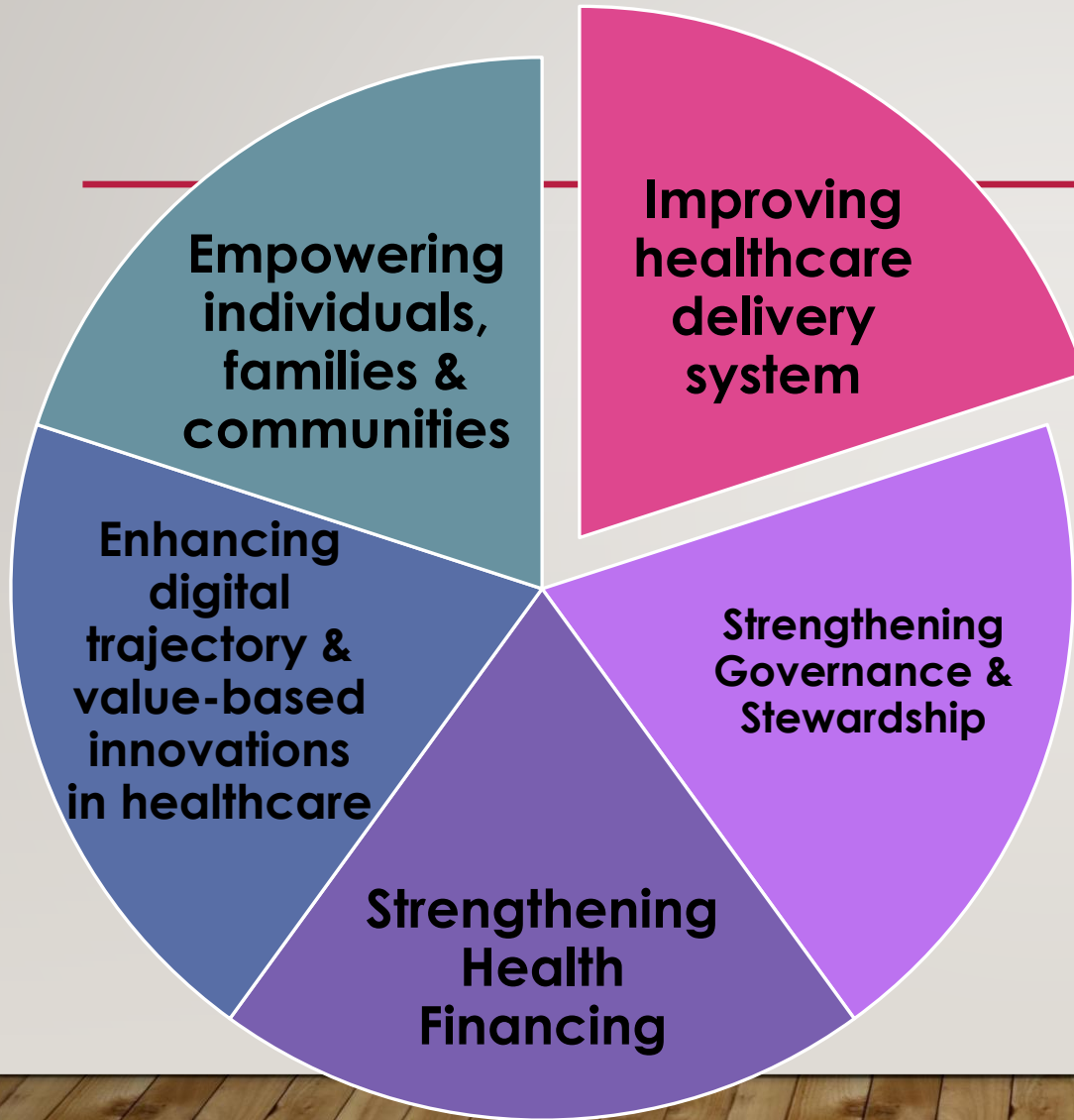
MESYUARAT KOORDINASI JKR DAN KKM
TAHUN 2020

COUNTRY HEALTH PLAN 12TH MALAYSIA PLAN 2021-2025

Theme : “INVIGORATING HEALTHCARE TOWARDS A
PROGRESSIVE NATION”



Priority Areas of I2MP



Health Facility Planning & Development

TOWARDS HEALTH FACILITIES ENHANCEMENT

1

Upgrade/Replace existing hospitals

Build new hospitals

2

Upgrade/Replace existing health clinics

Build new health clinics

3

Improve healthcare facility preparedness against emergencies

4

Improve quality of health facility design

Standardized health facility requirements

Health Facility Planning & Development

TOWARDS HEALTH FACILITIES ENHANCEMENT

Focus:

Restore

Repair

Replace

Existing facilities

- Building safety
- Efficient building system
- Reduce operating cost



Upgrading Of Old Hospitals/Institutions

- Triggered by fire incidence in Hospital Sultanah Aminah (HAS) in year 2016, resulting in 6 deaths
- MOH hospitals fire safety audit :
 - MOH hospitals without fire certificate
 - Requirements to comply to BOMBA notice
- Technical committee represented by MOH, JKR, BOMBA



SHORT TERM PLAN

21 HOSPITALS/ INSTITUTIONS



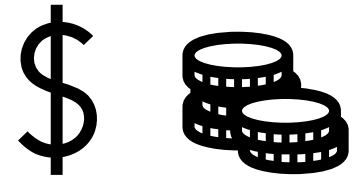
**Preliminary
work**



**Building
Condition
Assessment
(BCA)**



**Compliance
with notice
from BOMBA**



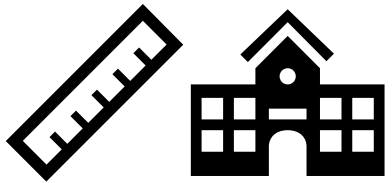
**Application of
Budget**

Implementation Plan Proposed by Technical Committee

MEDIUM TERM PLAN

Others 26 HOSPITALS/ INSTITUTIONS

21 HOSPITALS/
INSTITUTIONS



**Preliminary
work**



**Building
Condition
Assessment
(BCA)**



**Compliance
with notice
from BOMBA**



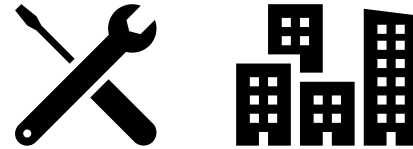
**Upgrading of
infrastructures
(electrical
works, fire
fighting
system etc.)**

Implementation Plan Proposed by Technical Committee

LONG TERM PLAN



**Demolish &
Rebuild
Healthcare
Facilities**



**Repair &
Upgrading of
Facilities and
Infrastructure**

*Depends on ***Building Condition Assessment*** (BCA) and Masterplan of Ministry of Health

Planning & Development-Hospital

- Hospital upgrading
(new block e.g. WCH block, Ward Block etc.)
- Replacement of existing hospital
- New hospital/institutions development
- Aim to increase bed population ratio (BPR) from 1.95 in 2019 to 2.1 by 2025

Bed population ratio = $\frac{\text{total hospitals beds}}{\text{total population}}$

Bed population ratio (BPR)

Total beds required by 2025 = 76,193 (MOH + non MOH + private)

Total required MOH beds in 2025 = 50,700

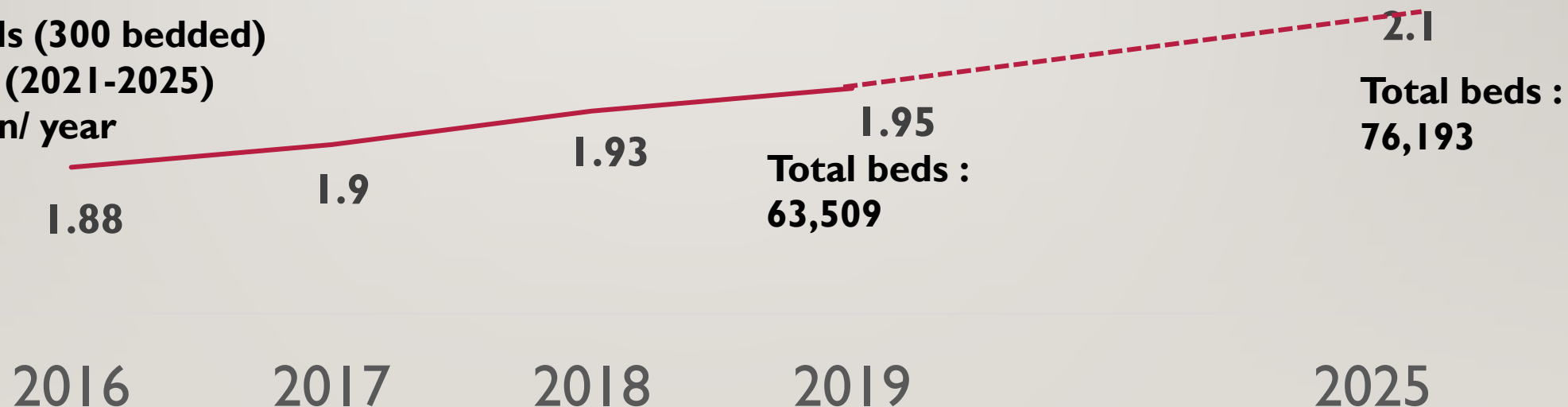
Additional beds MOH = 2,344 (excluding existing beds and committed projects beds)

= 8 new hospitals (300 bedded)

= RM 3.6 billion (2021-2025)

= RM 720 million/ year

**projected population =
36,282,400**

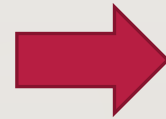


Planning & Development-Health Clinic

Gaps in health care coverage

- New Health Clinics

- in remote areas
- areas with geographical barrier



smaller health clinics (KK5,6,7) with sick bays and ABC

- in densely populated area
(heavy workload and congestion in existing facilities)



bigger health clinics(KK1,2,3)
community clinic (KKom)
compact high-rise design

Planning & Development-Health Clinic

- Replace existing Klinik Desa (KD) to Klinik Kesehatan 7 (KK) in phases
 - Quarters located above clinic (KK7 Bellus Terra, Bellus Aqua) – fire risk, proposed not to be used
 - Quarters separated from clinic (KK7 Bellus) – to be used for future MOH projects

MOH Clinic C/E Room population ratio

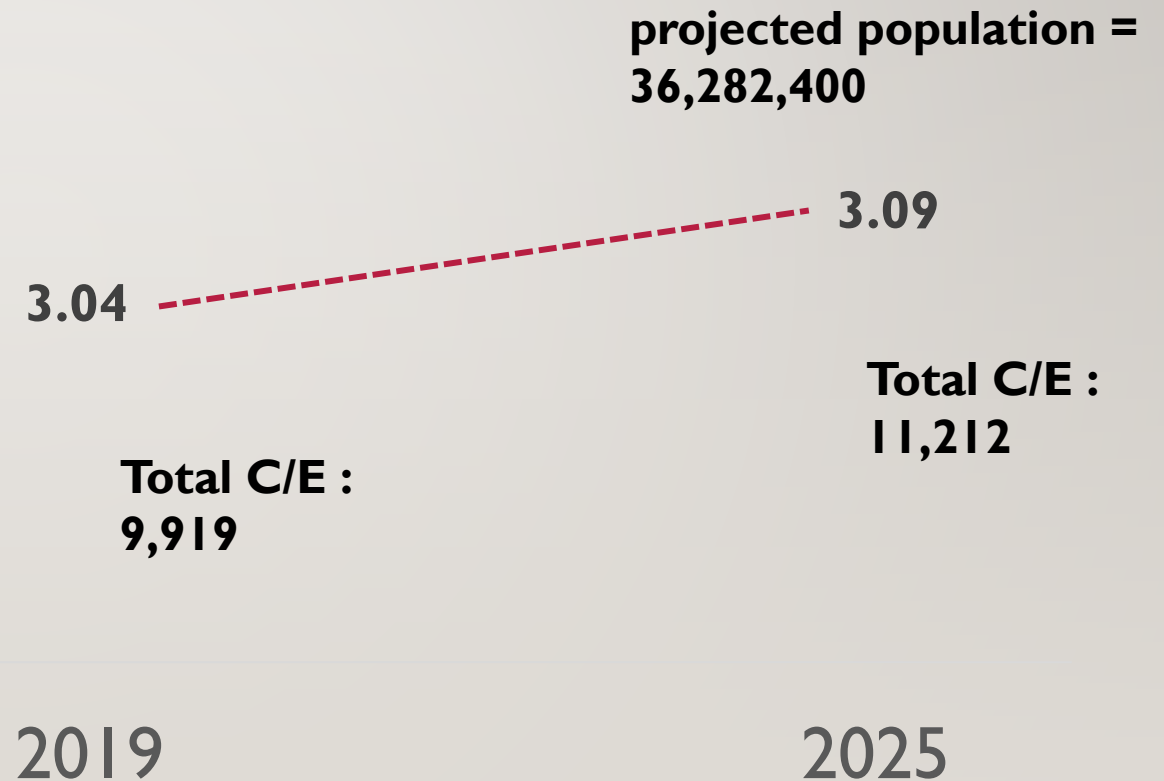
Total C/E rooms required by 2025 = 11,212

Current C/E rooms in MOH Clinic in 2019 = 9,919

Committed project C/E rooms = 840

Additional C/E rooms required (2021-2025) = 453
= 38 health clinics (Type 3)
= RM 1.33 billion (2021-2025)
= RM 266 million/year

*** C/E rooms excludes dental C/E**



Healthcare Facility Preparedness Against Emergencies

Hospitals and Clinics:

- able to accommodate requirements during emergencies (e.g. disease outbreak)
- Workshop on hospital requirements Post COVID (28-30 Sept 2020)
 - e.g.
 - easily convertible normal wards to isolation wards
 - space for general biometric screening prior entry into hospitals & clinics
 - design for physical distancing in waiting area, staff rest etc.



Health Facility Planning Standard Norms And Guidelines

MOH

- Health facility planning norms and guidelines (2020)
- Space planning
- M&E
- Equipment

Collaboration with JKR

- Standard room data
- Improve PAP for KK and non specialist hospital
- Update JKR Prebid Technical Document

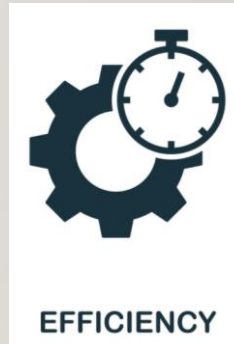
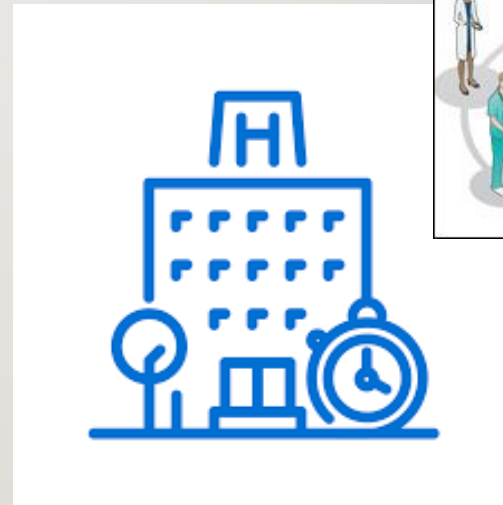
Current Requirements for Healthcare Facilities

Patient centred

- Focus on patient well being
- Create optimal environment for patient safety, patient visibility and easy communication with staff

Efficient

- Smooth workflow and operations
- Enhance clinical safety
- Provides optimal functional relationships



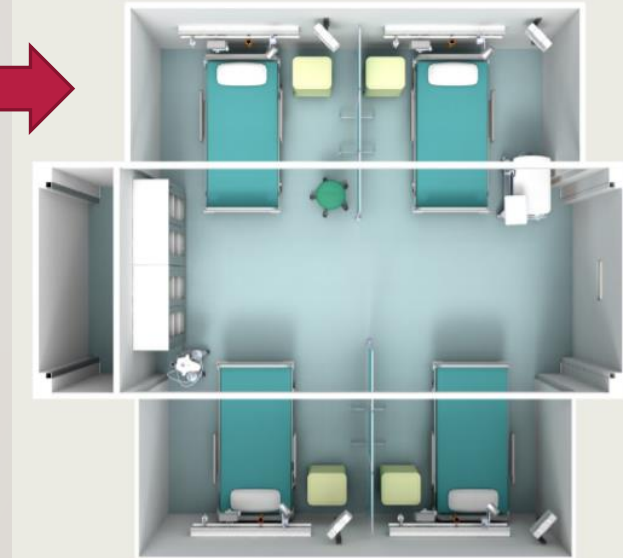
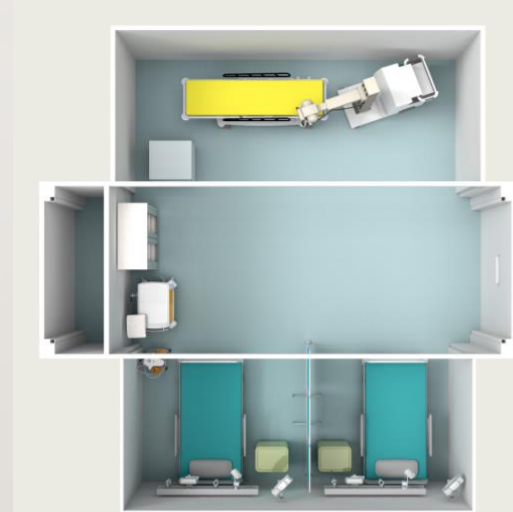
Current Requirements for Healthcare Facilities

Flexibility

- For expansion
- Adapt new technology
- Emergency/disaster preparedness

Sustainable

- Reduced energy usage
- Minimize waste
- Decrease operational costs



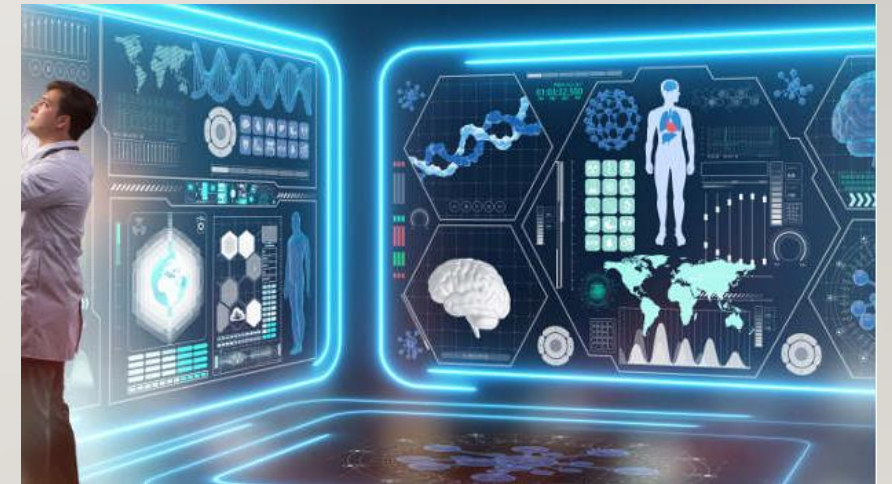
Current Requirements for Healthcare Facilities

Healing environment

- Create an environment suitable for healing by including respite area (e.g. landscape, therapeutic garden etc.)
- Improve patient wellness and recovery time

Technology

- Facilities and infrastructure that prepares for digital technology in healthcare
e.g. EMR, Augmented reality (AR), Artificial intelligence (AI), Virtual reality (VR), 3D printing



Thank you.
