



# **KURSUS COST X & REVIT 3D MODELING TAKE-OFF (BASIC)**

**25 - 27 MAC 2019**

**STUDIO BIM  
TINGKAT 20, MENARA PJD  
KUALA LUMPUR**

# **PENCERAMAH DAN FASILITATOR**

- ☐ **Sr Nur Waheeda Ismail**
- ☐ **Mohamad Dizi Che Kadir**
- ☐ **Sr Norafazarul Aini**

**CAWANGAN KONTRAK & UKUR BAHAN  
IBU PEJABAT JKR MALAYSIA  
KUALA LUMPUR**

# **KANDUNGAN**

- ☐ **BUILDING INFORMATION MODELING (BIM)**
  - ☐ **REVIT (ASAS)**
- ☐ **COSTX (ASAS / PERTENGAHAN)**
  - ☐ **HANDS-ON**

# **BUILDING INFORMATION MODELLING (BIM)**

# **REVIT**

**(ASAS)**

# **COSTX**

## **(ASAS & PERTENGAHAN)**

# INTRODUCTION

## ❑ Whats is CostX



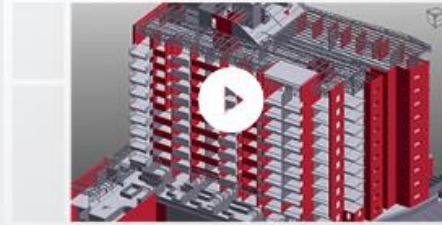
# INTRODUCTION

## □ Features



### 2D Takeoff

Support for scanned, PDF, CAD and other 2D drawings. Streamline measuring processes by calculating areas, lengths and counts with a single click, cutting takeoff times by up to 80%.



### BIM / 3D Models

Accurately estimate quantities and costs based on BIM files that incorporate large repositories of data. Improve design quality, reduce errors and add value across all processes in the construction lifecycle.



### Workbooks

Spreadsheet-based workbooks are live-linked to drawings and supported by detailed repositories of data, ensuring all necessary information can be found in the one place.



### Auto-Revisioning

Our powerful revision mode can be used to draw comparisons between drawings and highlight new changes. Users can be confident that necessary changes are clearly defined throughout the design process.



### Subcontractor Comparison

Generate workbooks for subcontractor comparison and integrate them with associated reports. The comparison tool saves time and allows the user to make a well-informed decision on specialised work.







### Reports + More

- ➕ Produce customised, professional quality reports that showcase your enterprise.
- ➕ Sort and group works based upon codes and zones, ensuring all ongoing work is categorised correctly and easy to locate.



# INTRODUCTION

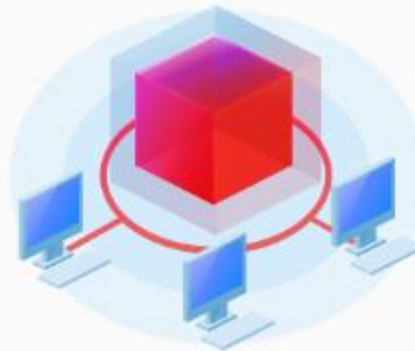
## □ Product Range

				
Features	CostX	CostX 2D	CostX Takeoff	CostX Takeoff 2D
2D drawings (incl. PDFs) ?	✓	✓	✓	✓
3D / BIM Model ?	✓		✓	
Workbooks + Report ?	✓	✓		
Auto- Revisioning ?	✓		✓	
Subcontractor Comparison / Bid Day ?	✓	✓		

Standalone Licence



Network Licence



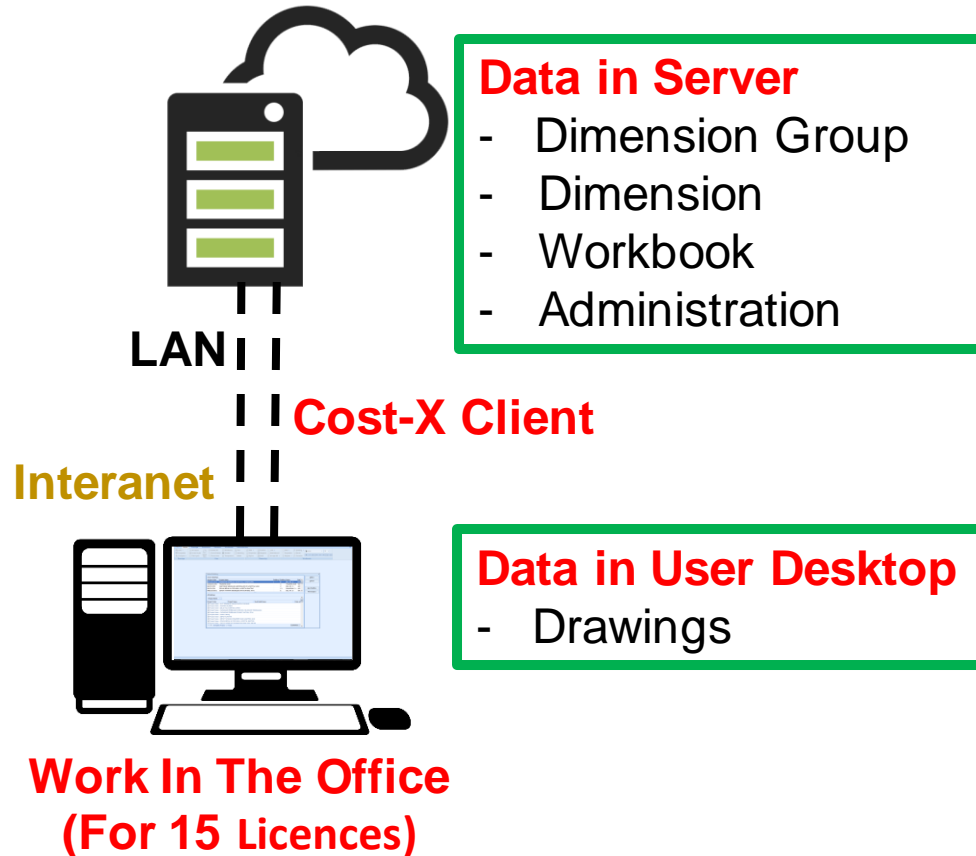
Portable Licence



# INTRODUCTION

## ☐ Licence

**Cost-X Server (10.8.109.84)**



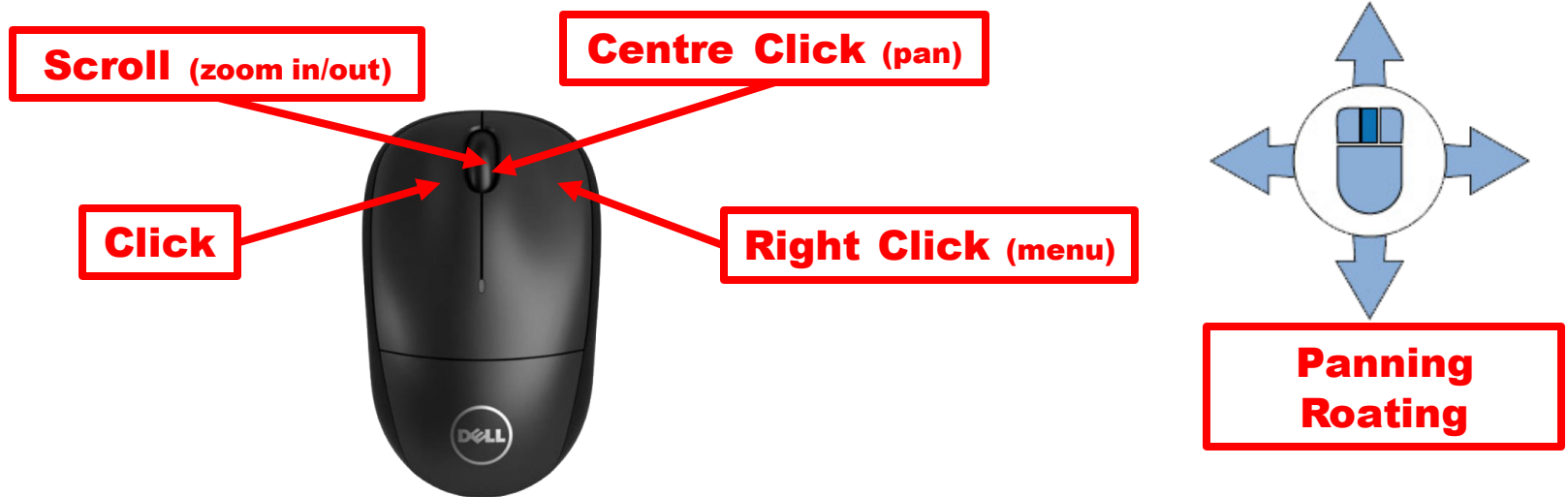
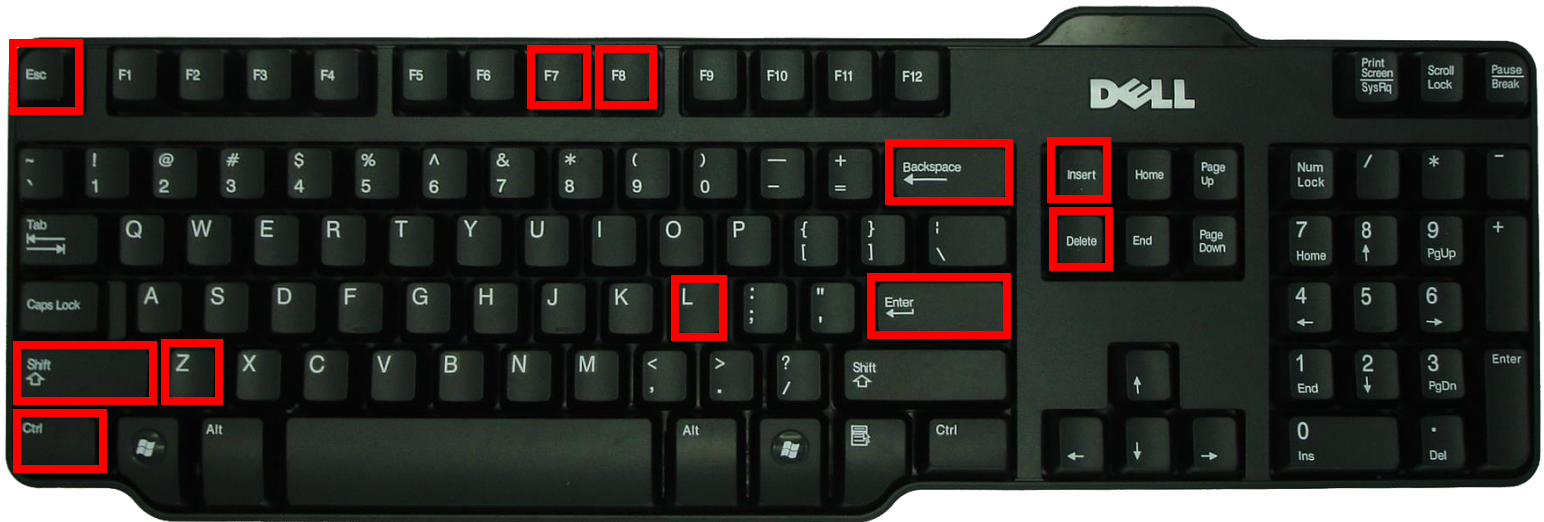
Network Licence



Network licences allow the software to be installed on multiple PCs, with a central database installed on a server (this may also be a normal PC). It allows a set number of current users.

# INTRODUCTION

## □ Mouse & Keyboard



# DRAWINGS/MODELS

## □ Adding Drawings



**Image Files**  
**Raster Format**



**Drawings Files**  
**Vector Format, 2D CAD & BIM Models**

# COST-X USER LOGIN

- |                |          |
|----------------|----------|
| 1. BERNARDAINE | - User02 |
| 2. MARIANI     | - User03 |
| 3. ROSDI       | - User04 |
| 4. NORLIANA    | - User05 |
| 5. SURAYA      | - User06 |
| 6. FATANAH     | - User07 |
| 7. KHAM SIN    | - User08 |
| 8. MASNI       | - User09 |
| 9. RAHIMI      | - User10 |
| 10. NOOREL     | - User11 |
| 11. NAAIM      | - User12 |
| 12. ANUAR      | - User13 |
| 13. SABRI      | - User14 |
| 14. DIYANA     | - User15 |
| 15. RIDZUAN    | - User16 |



**Server : 10.32.128.31**

**Password : 54321.**

# **GETTING STARTED**

- ☐ **System Administration**
  - ☐ **CostX Option**
  - ☐ **Opening CostX**
- ☐ **Overview User Interface**
  - ☐ **Creating a New Project**
  - ☐ **Creating a New Building**

# **DRAWINGS**

- ☐ **Adding a 3D BIM Drawing**
- ☐ **View and Drawing Navigation**
  - ☐ **Unit of Measure**

# **MEASUREMENT**

- ☐ **Object Mode**
- ☐ **Importing Dimension**
  - ☐ **3D Measure**



# **BILL OF QUANTITY**

- ☐ **Workbooks**
- ☐ **Reports**

**HANDS-ON**

# **HAND-ON** **(MEASUREMENT)**

- ☐ **Structural Works**
- ☐ **Floor & Ceiling Finishes**
  - ☐ **Walls & Wall Finishes**
    - ☐ **Roof**
  - ☐ **External Works**
- ☐ **WORKBOOK & REPORT**

**PENUTUP**

**SEKIAN,  
TERIMA KASIH**