



A photograph of the Autodesk building exterior. The building has a modern, industrial design with large glass windows and a metallic facade. A large, colorful, abstract mural is visible on the wall, depicting a complex, mechanical structure with various colored components (red, yellow, blue, green) and lines. The Autodesk logo is mounted on the wall above the mural.

AUTODESK

The Future of Making Things

Gianluca Nicholas Lange
Senior Industry Manager AEC
ASEAN

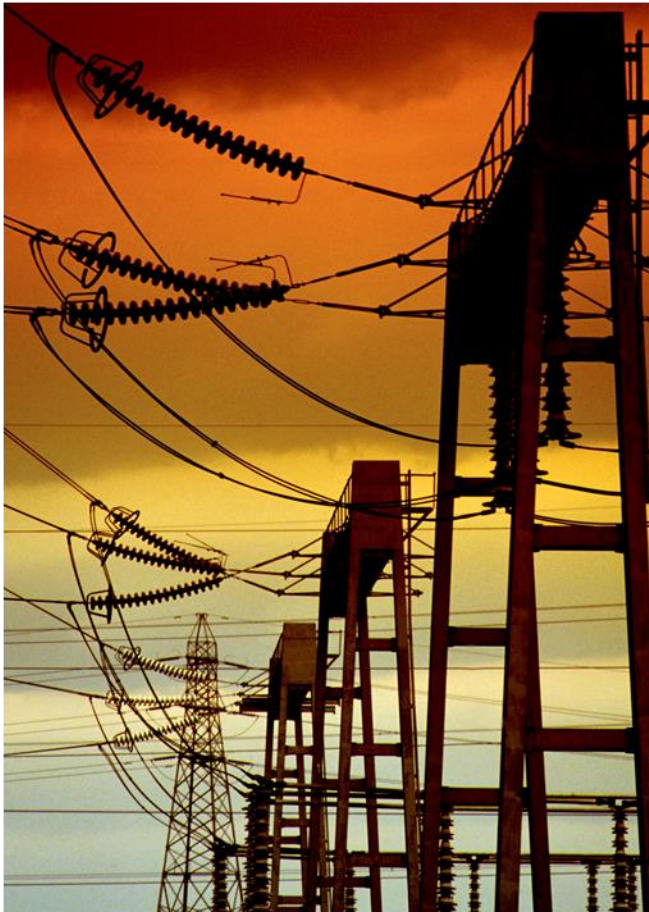
UNDERSTANDING
THE CHALLENGE

NATURE OF DIGITAL
DISRUPTION

IMPLICATION OF DIGITAL
DISRUPTION

MANAGING THE DIGITAL
DISRUPTION

The Future of Infrastructure



Nature of Digital Disruption



PRODUCTION



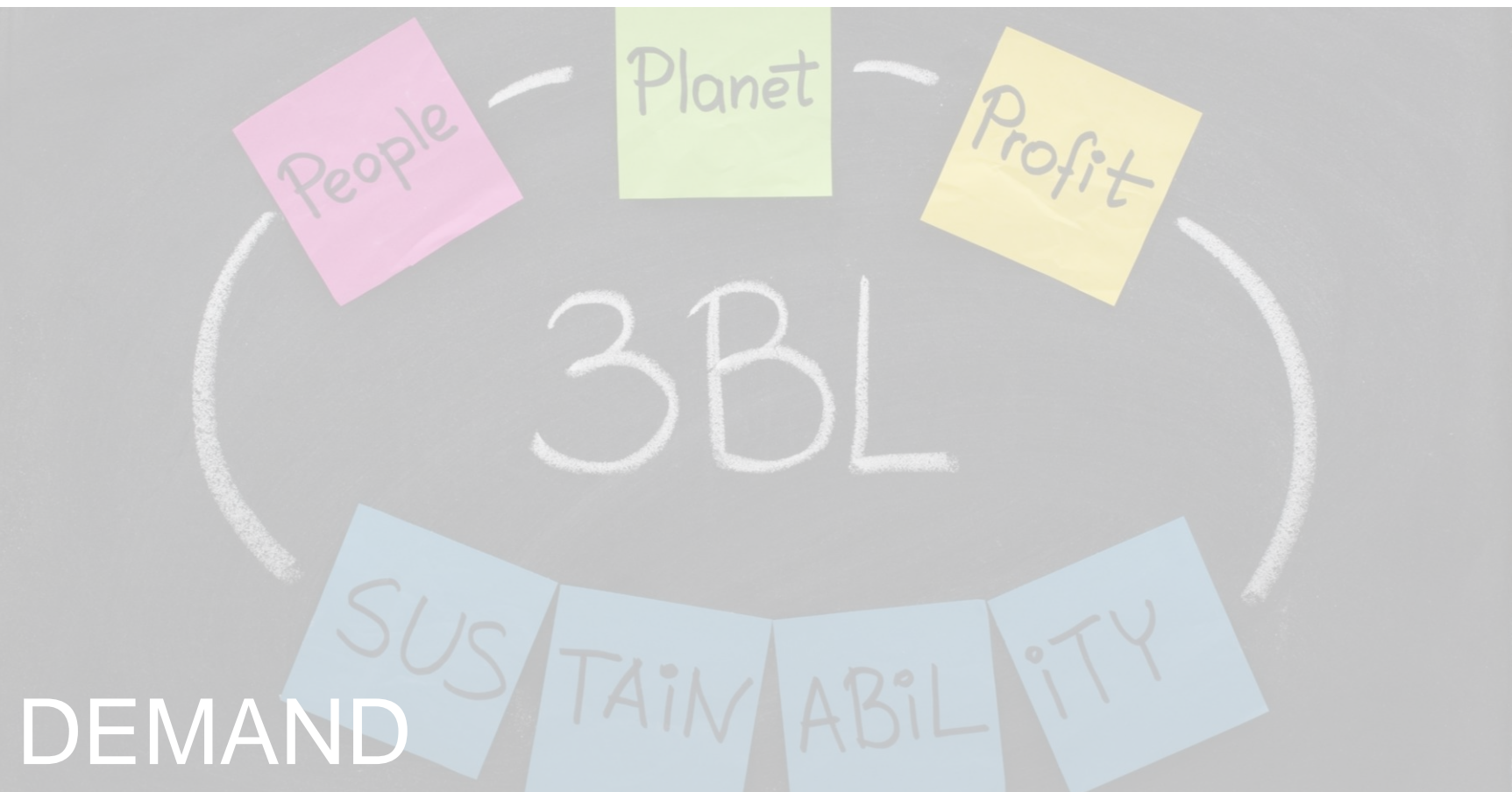
DEMAND



PRODUCTS



Image Courtesy Parsons Brinckerhoff



INTELLECTUAL PRODUCTION



Image Courtesy HatchMottMacDonald



Image Courtesy Parsons Brinckerhoff

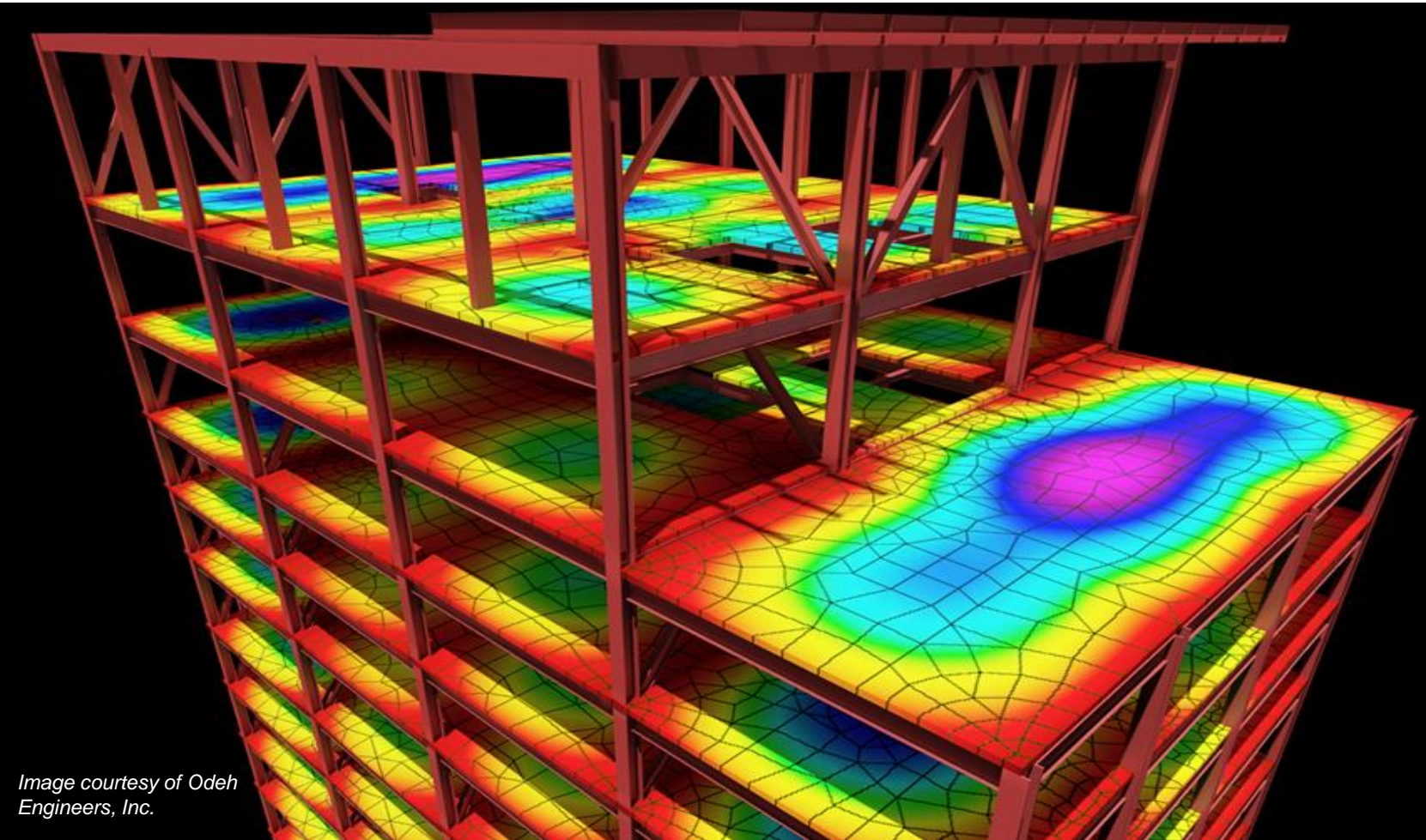


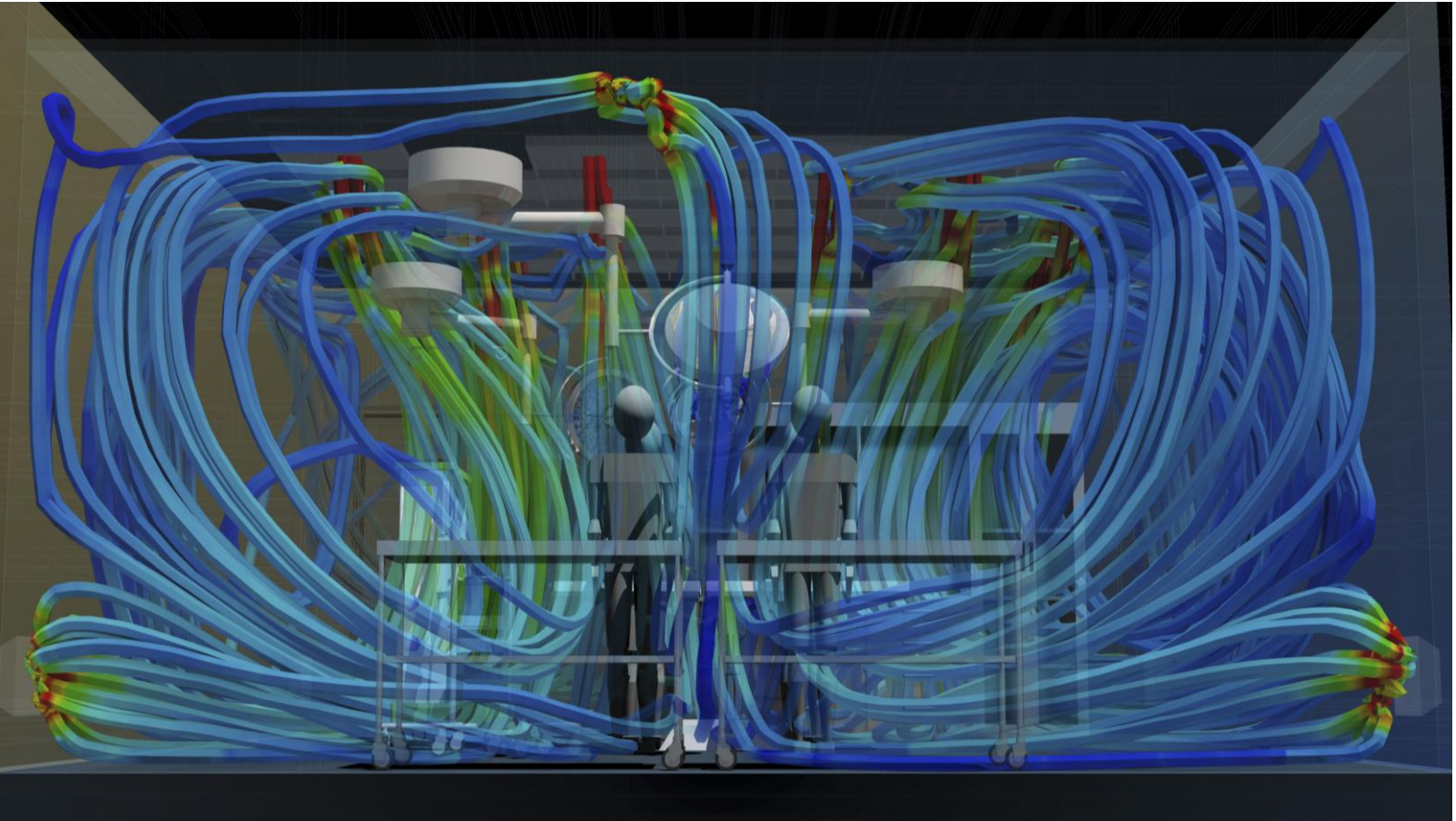
Image courtesy of Odeh Engineers, Inc.

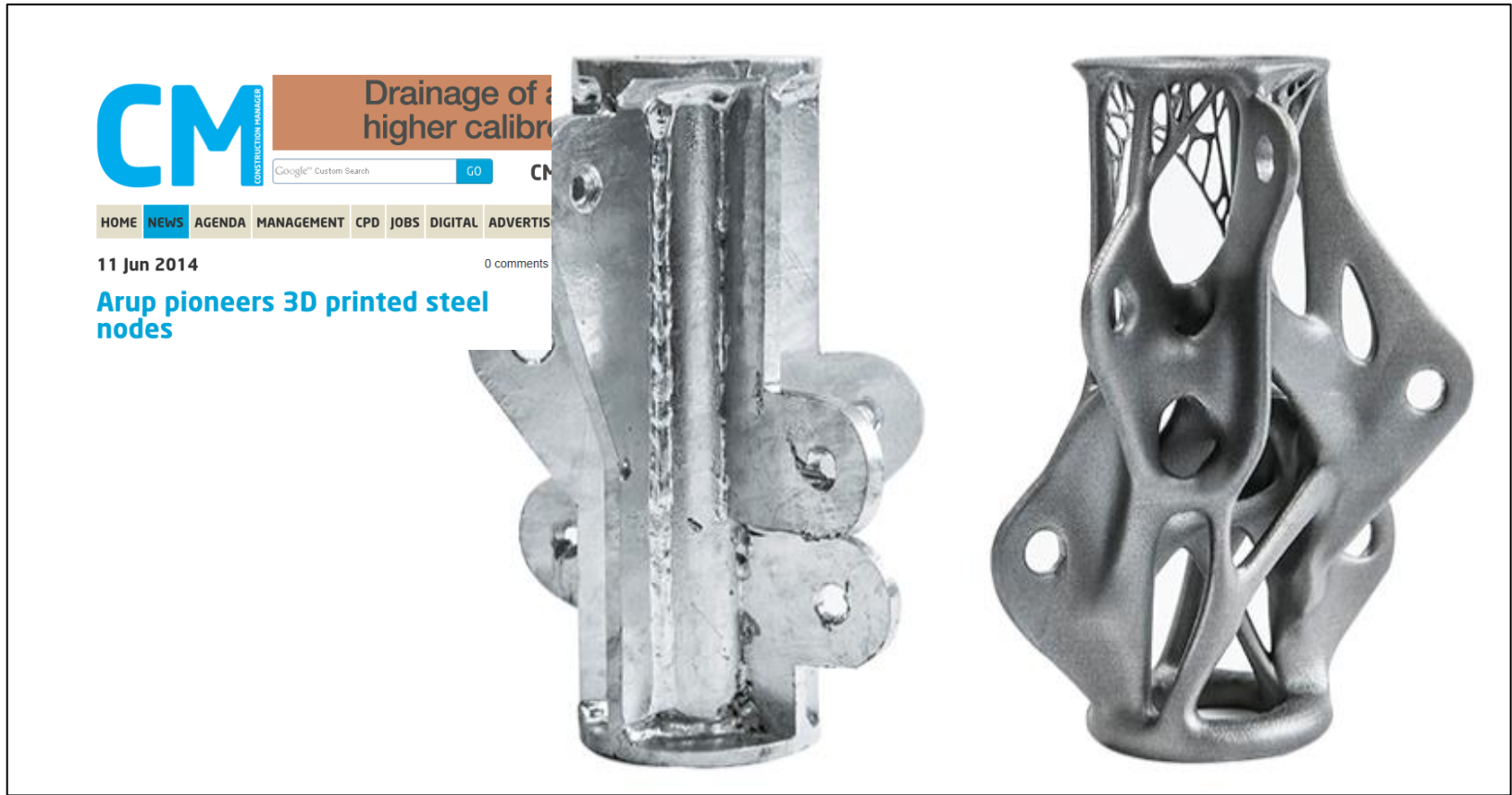


Image courtesy of David Benjamin @thelivingnewyork.com



Image Courtesy Parsons Brinckerhoff



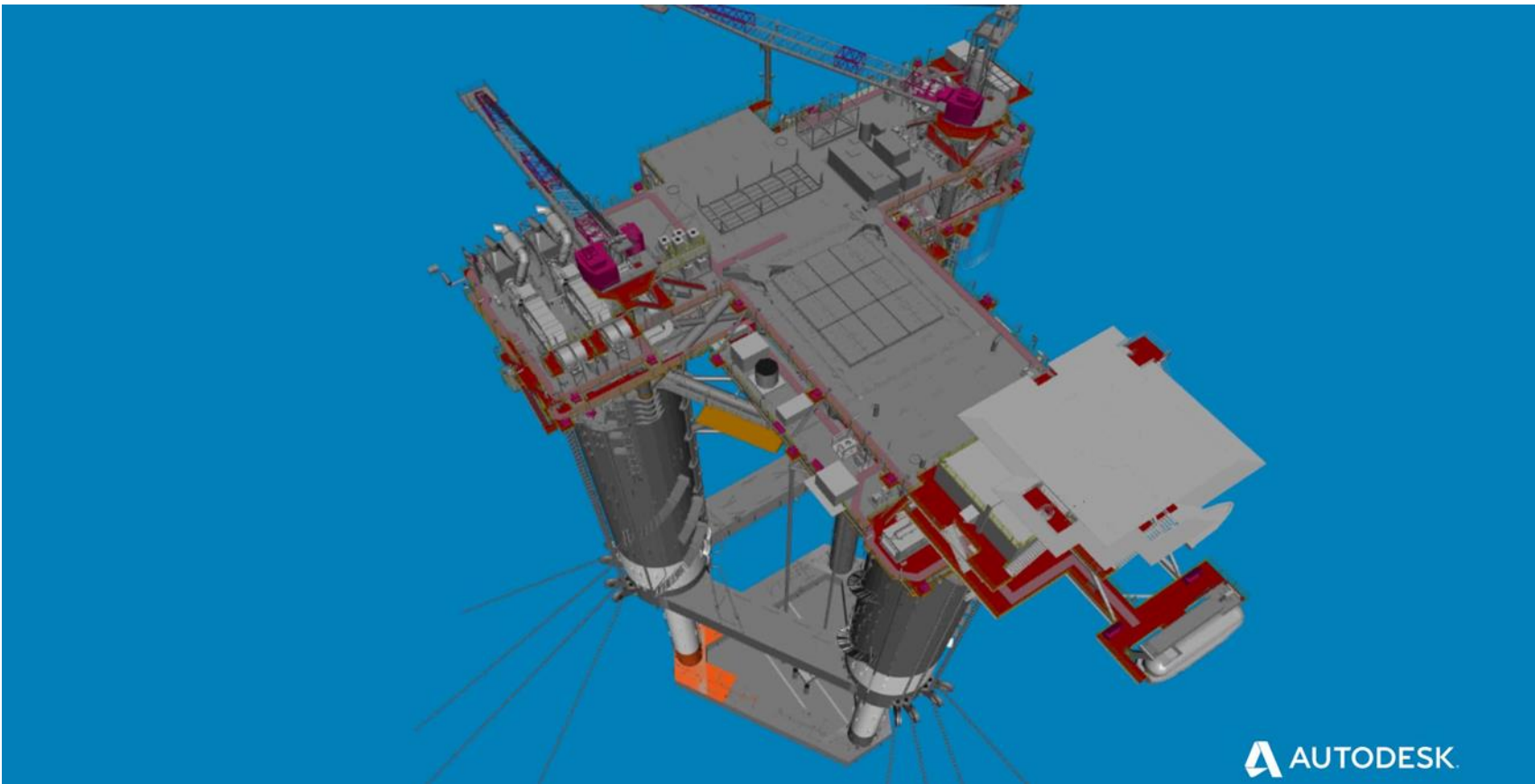


Physical Production



000:58:16

Courtesy of the BROAD Group





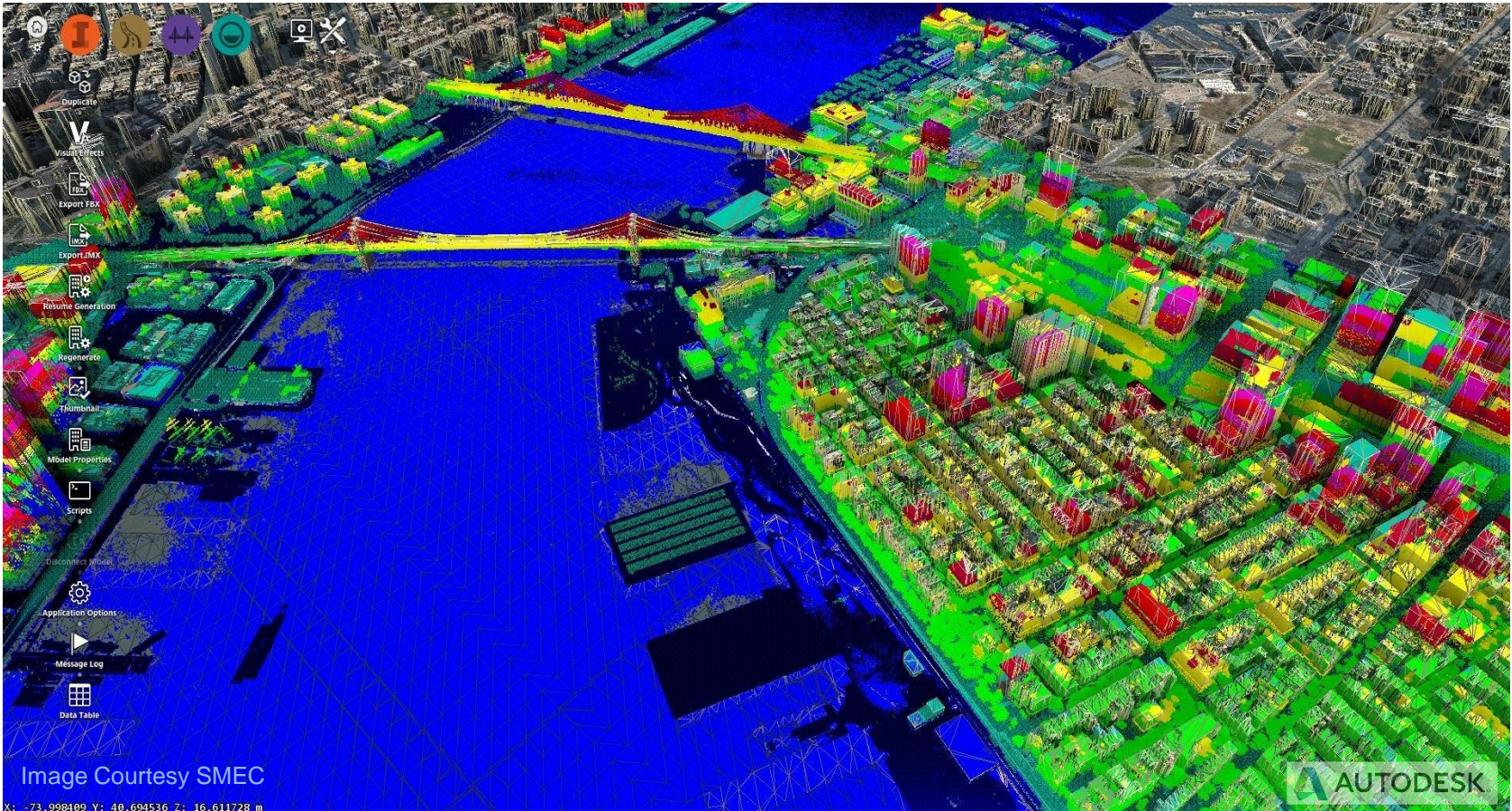
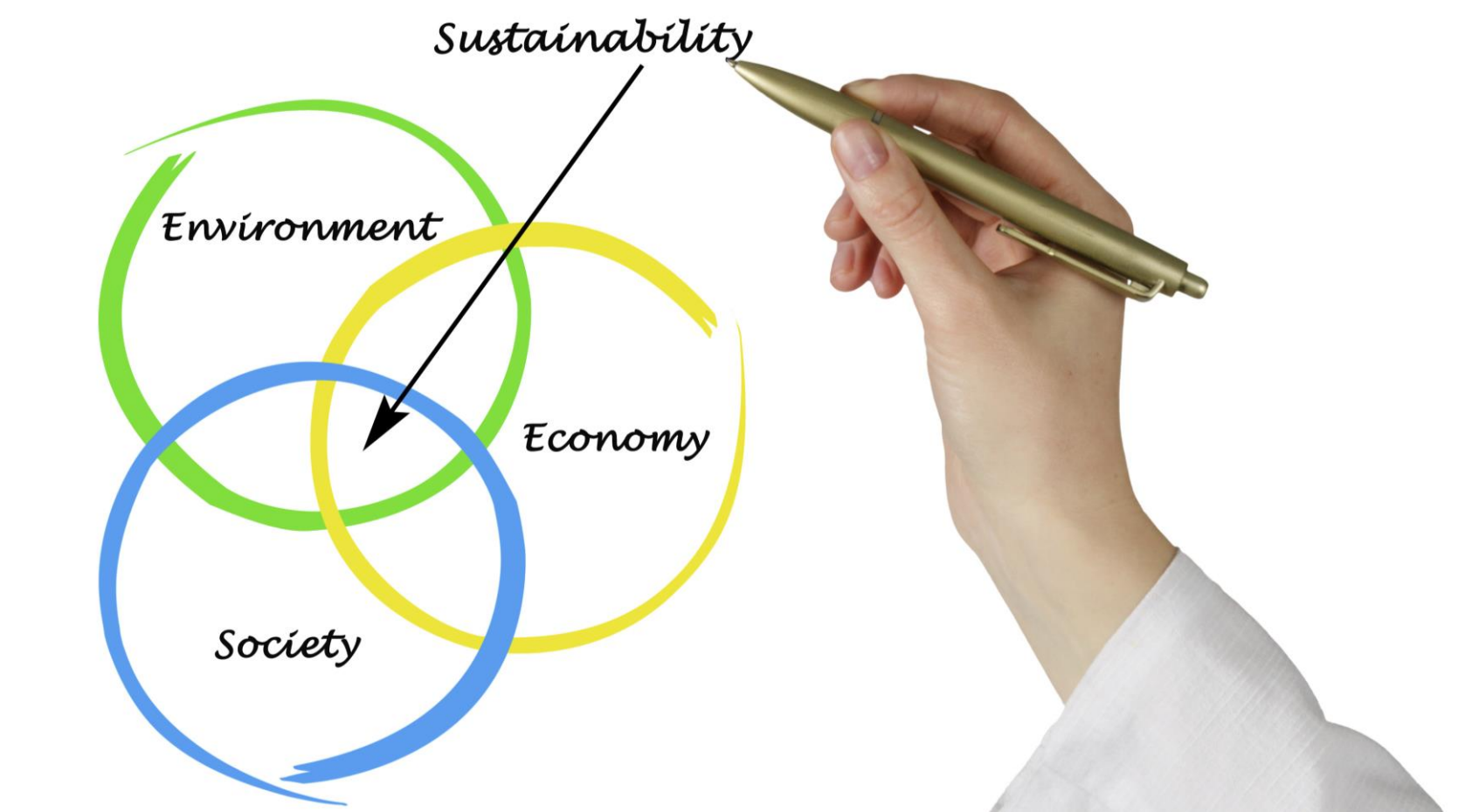
PRODUCTION



DEMAND



PRODUCTS

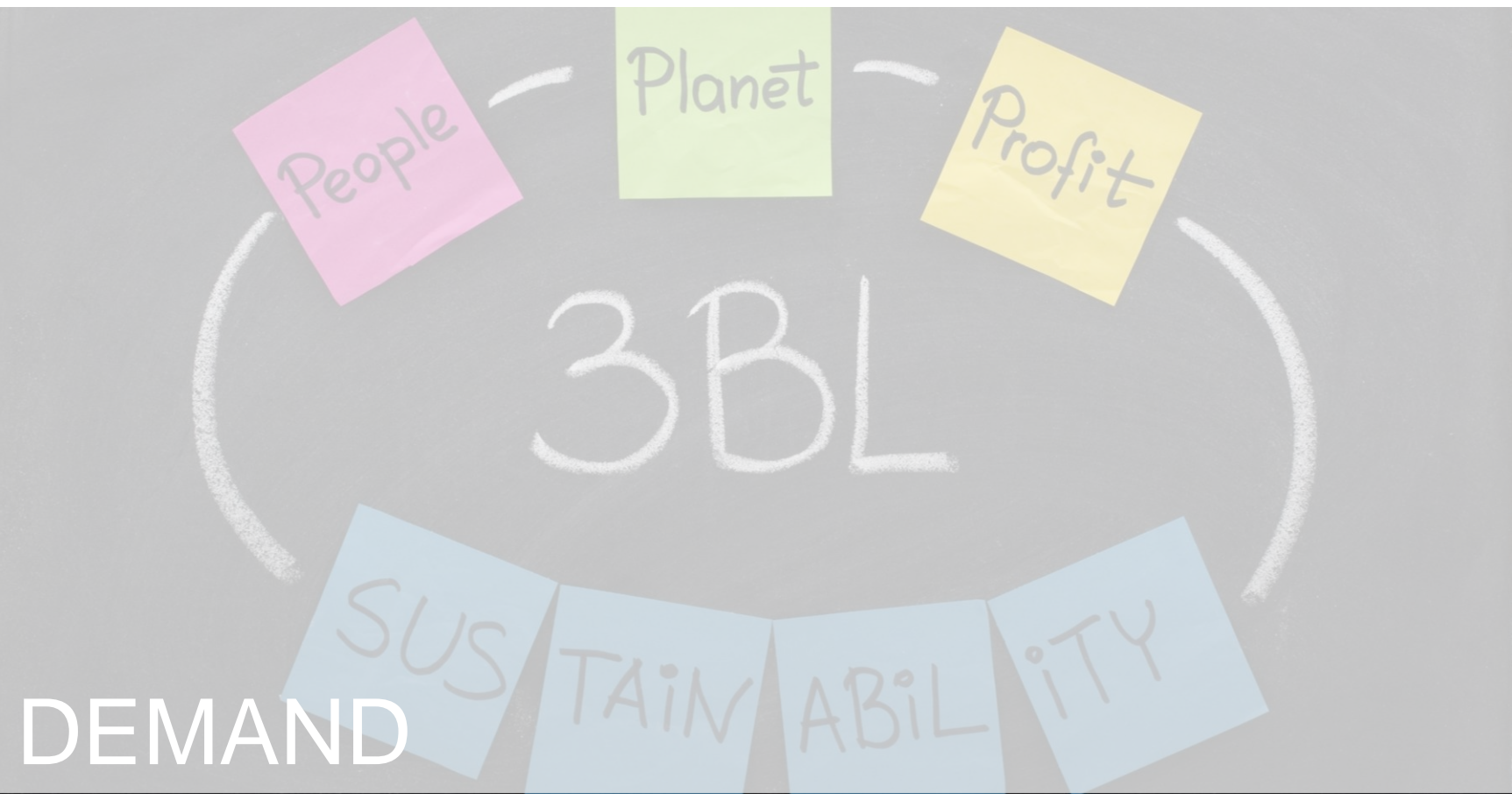


"I Make Rotterdam" project in the Netherlands is a prime example of a crowd funded project. Image courtesy of Zones Urbaines Sensibles



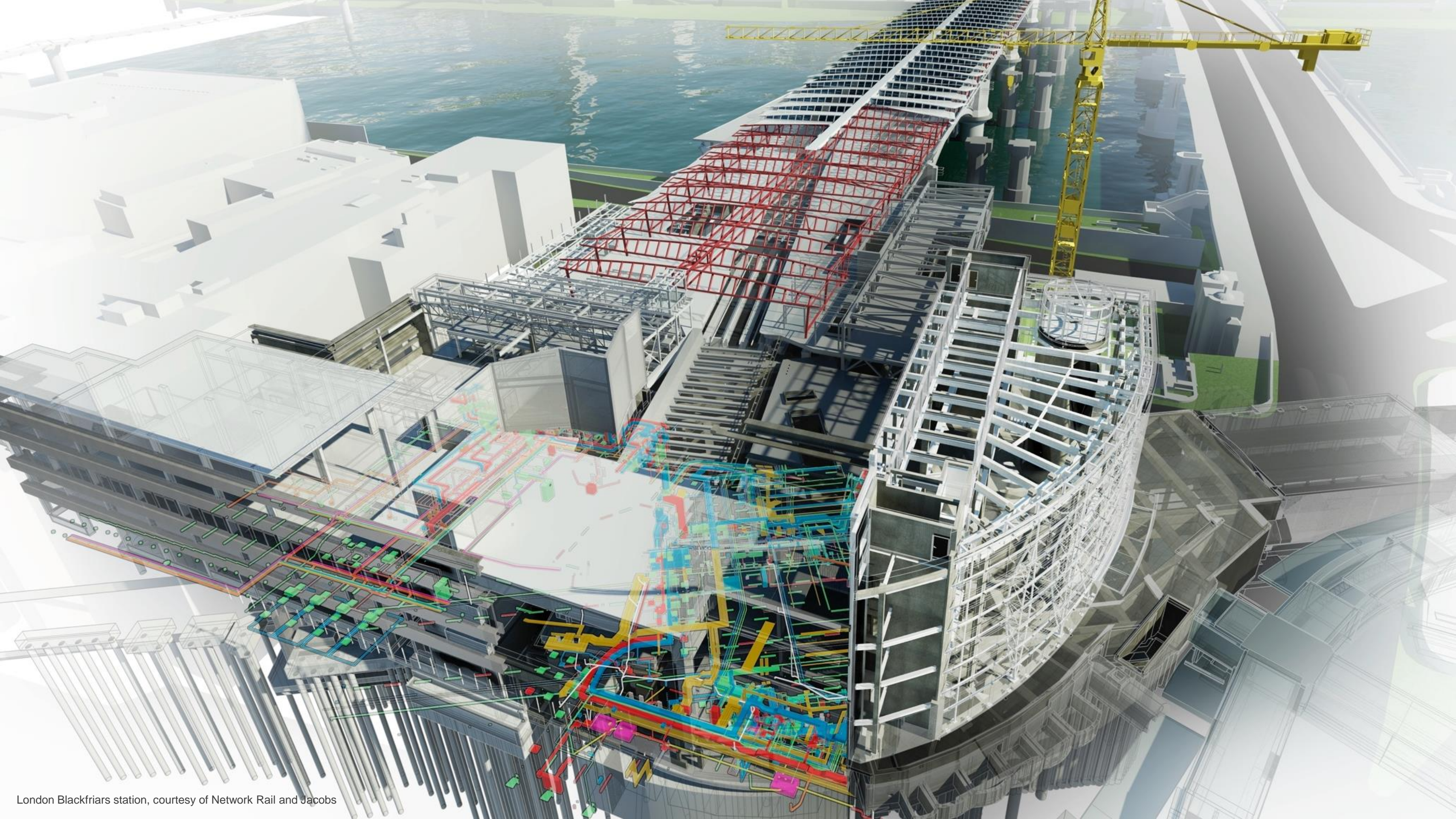


PRODUCTION



DEMAND





London Blackfriars station, courtesy of Network Rail and Jacobs



ROAD NETWORK REPORT

ANALYZING CITY [SPRINGFIELD // ZONE S-324]



PROJECT COMPLETE

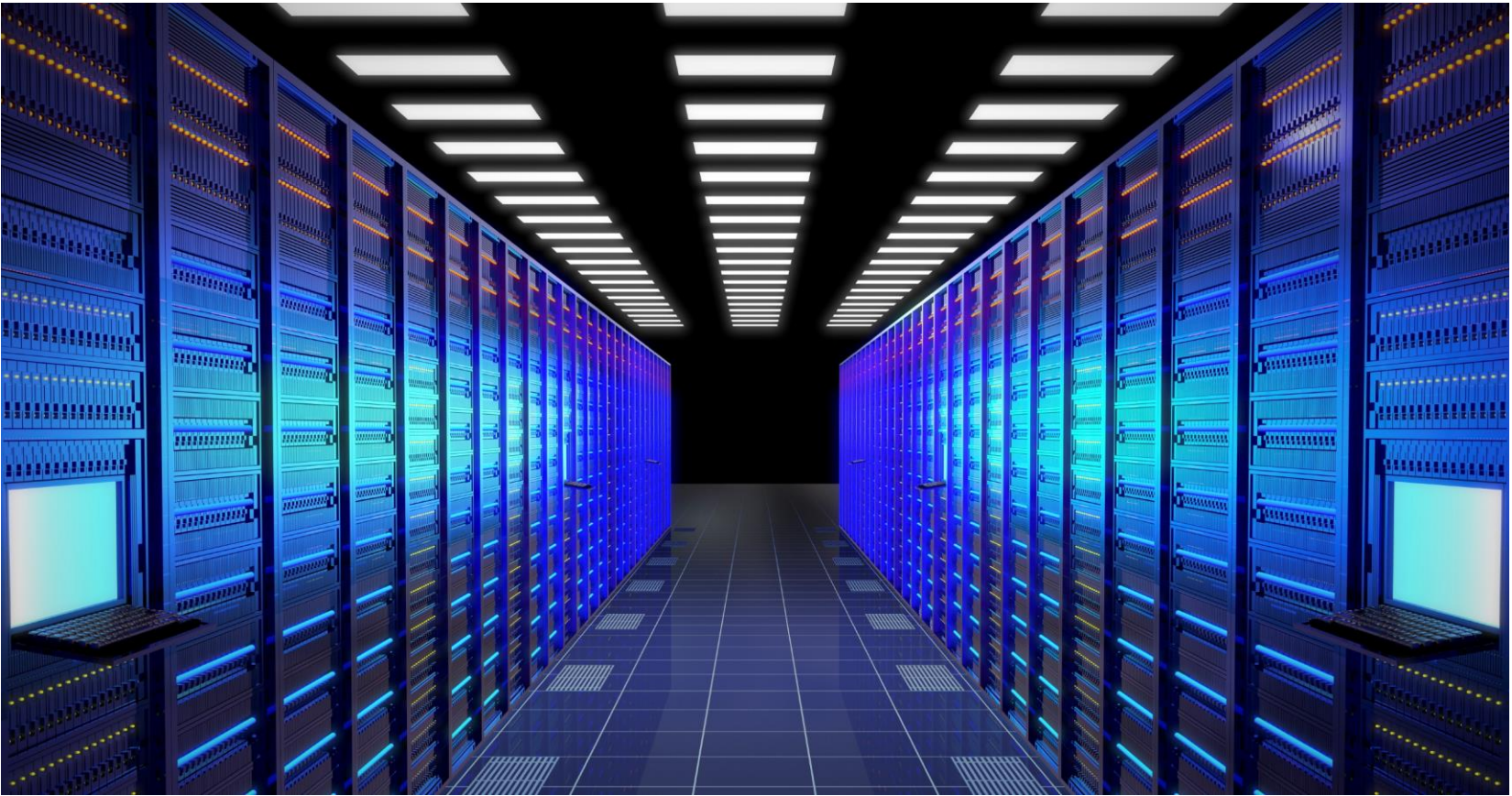
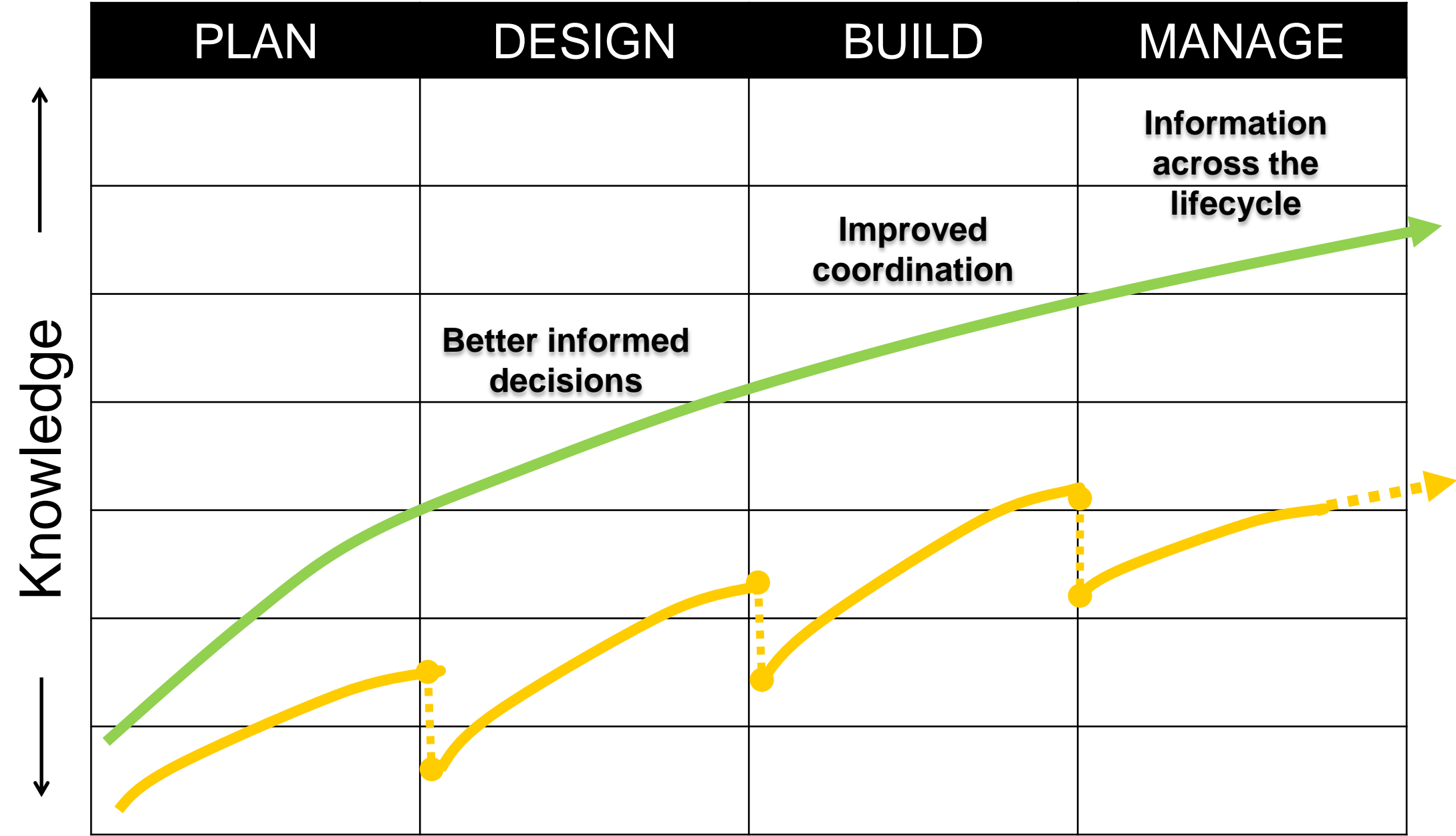


Image Courtesy Parsons Brinckerhoff

Implications of Digital Disruption

Shift in Project Execution



Planning

Where will people
LIVE & WORK?



How will we **TRANSPORT**
PEOPLE & GOODS?

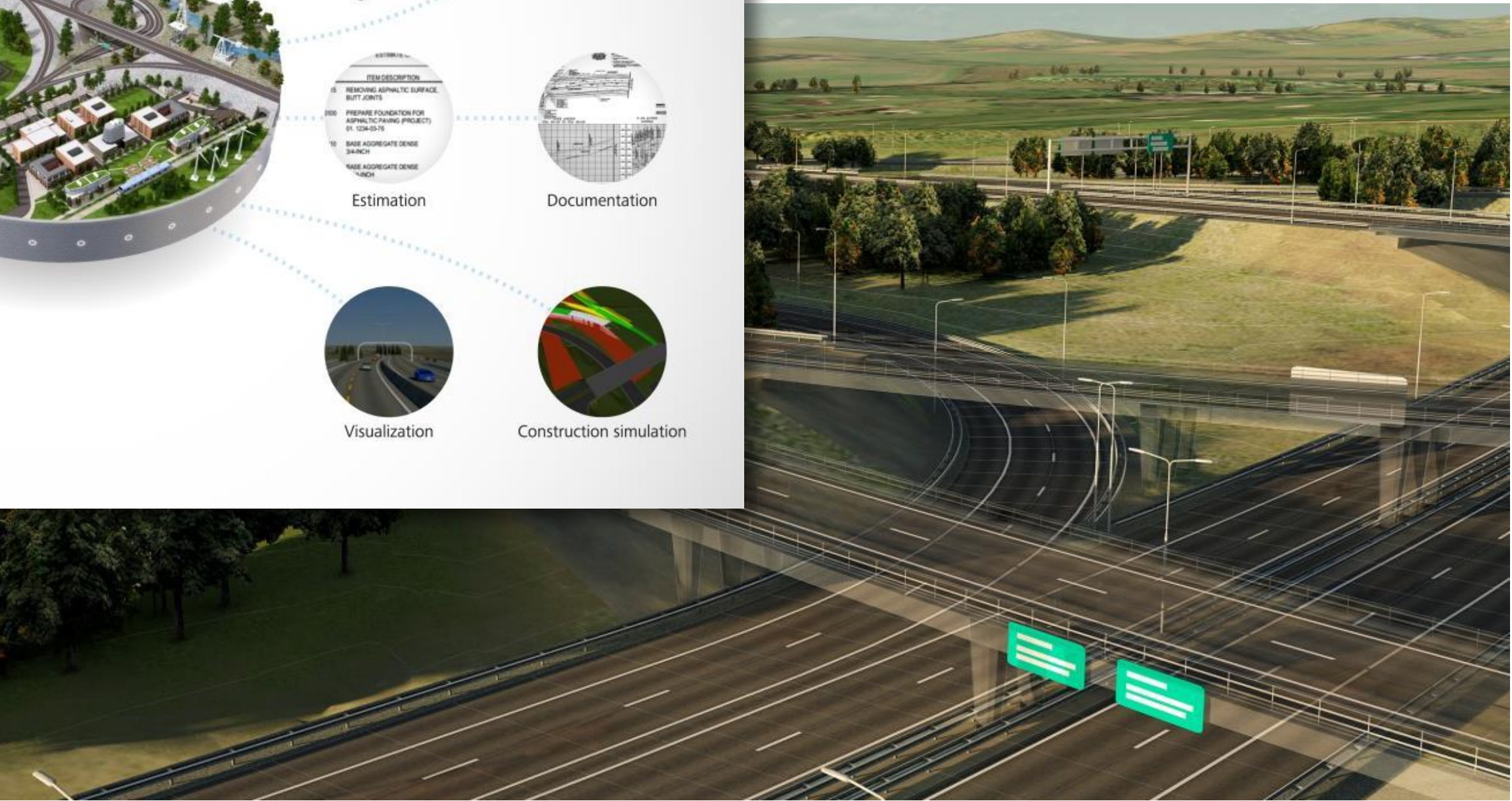


It's going to take a **HOLISTIC APPROACH**
to find the '**RIGHT**' SOLUTIONS

How will people **COMMUTE?**



Design

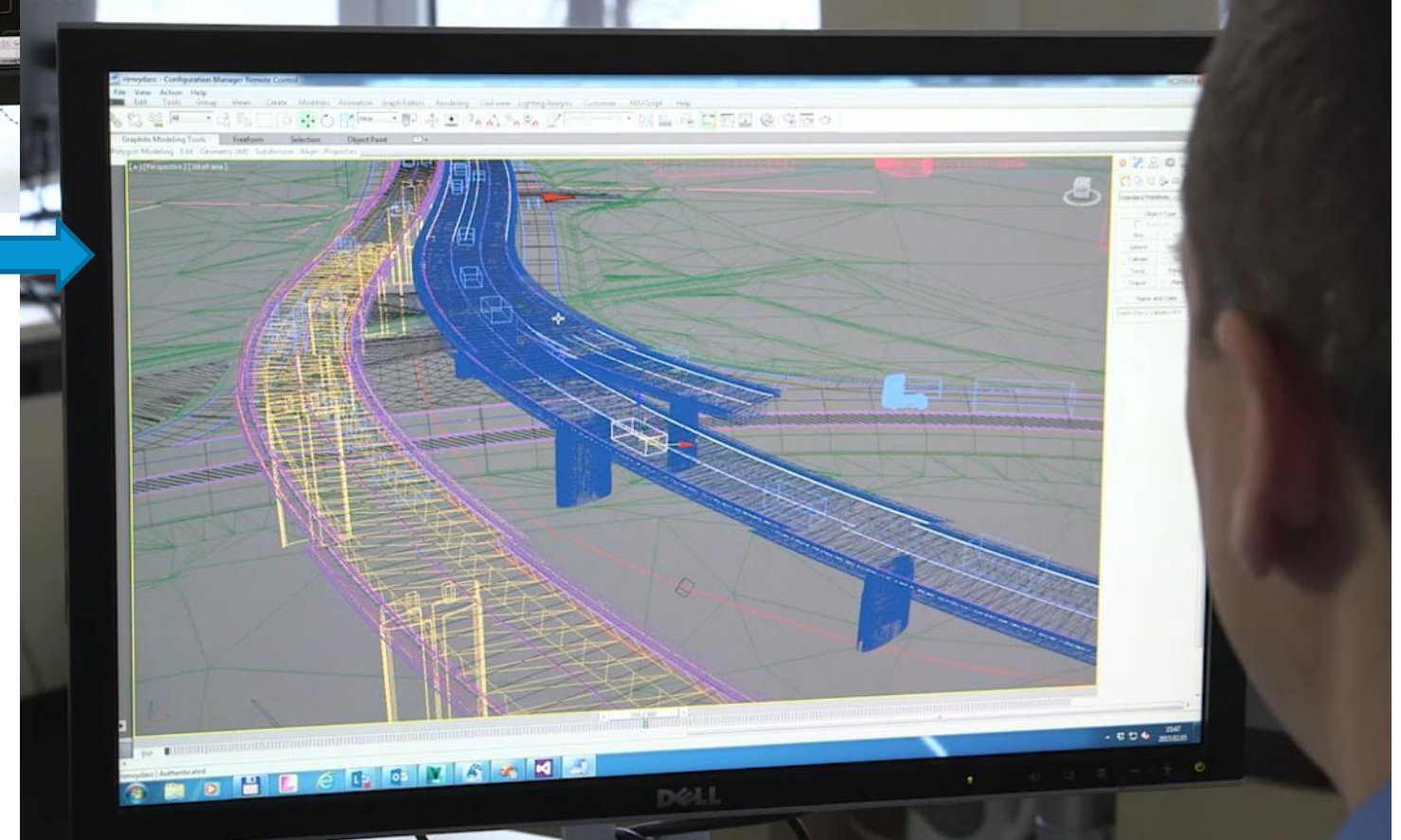
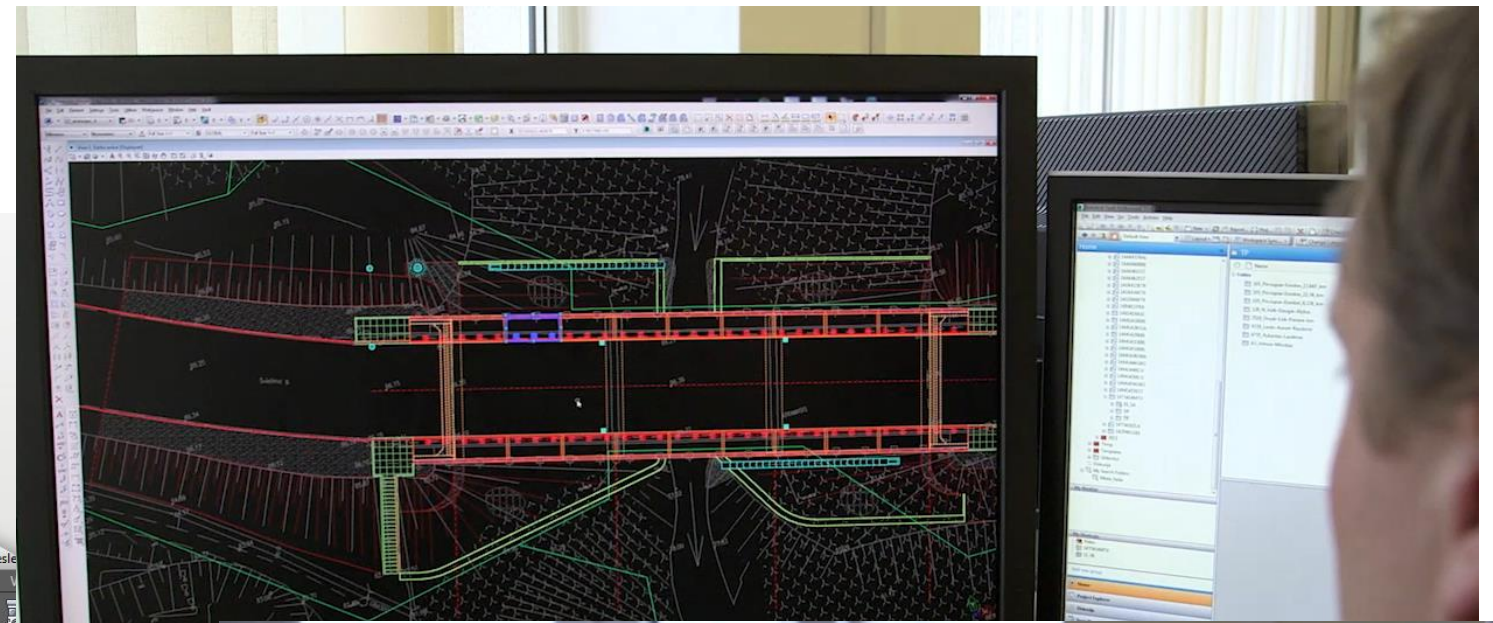


Transfer of Design Intent

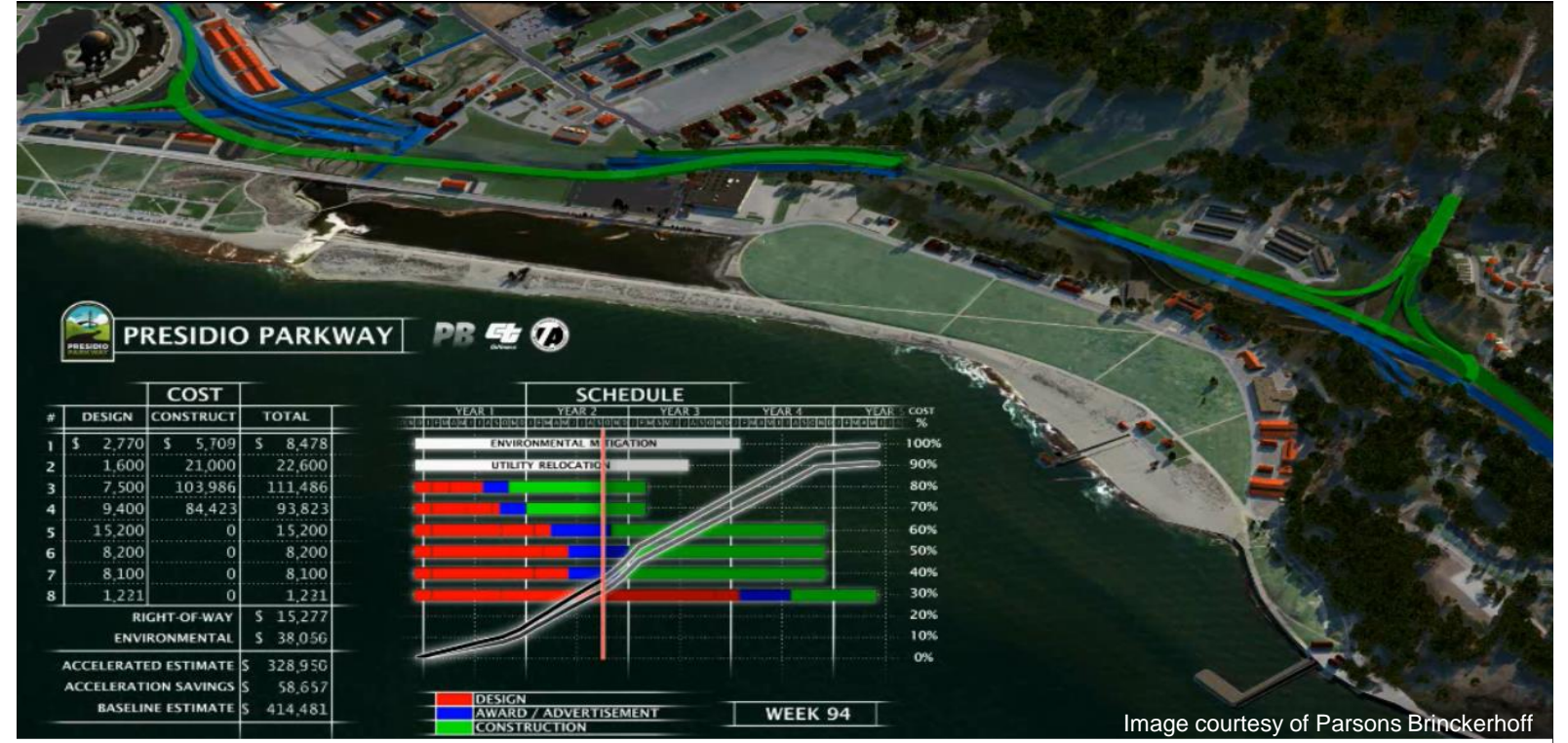
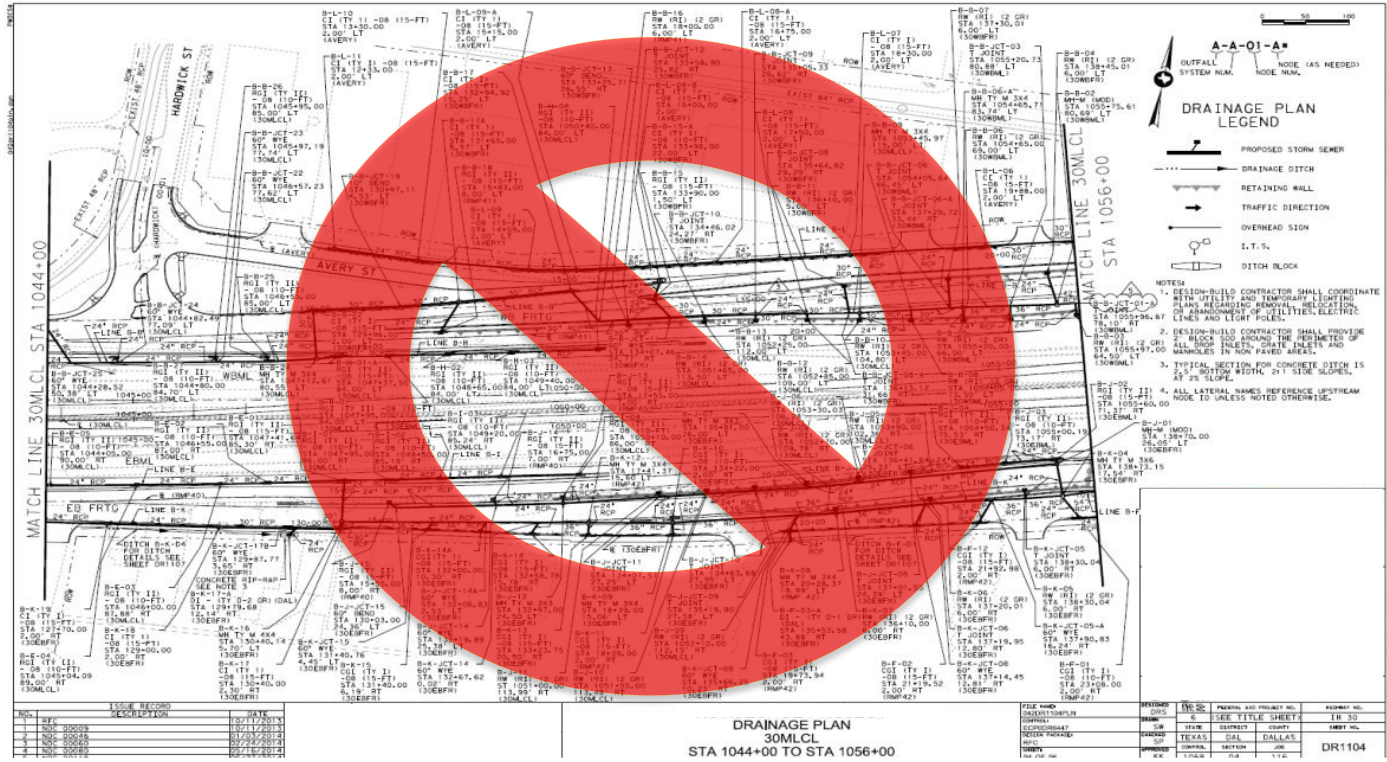
Which is the quickest way to an optimized design?



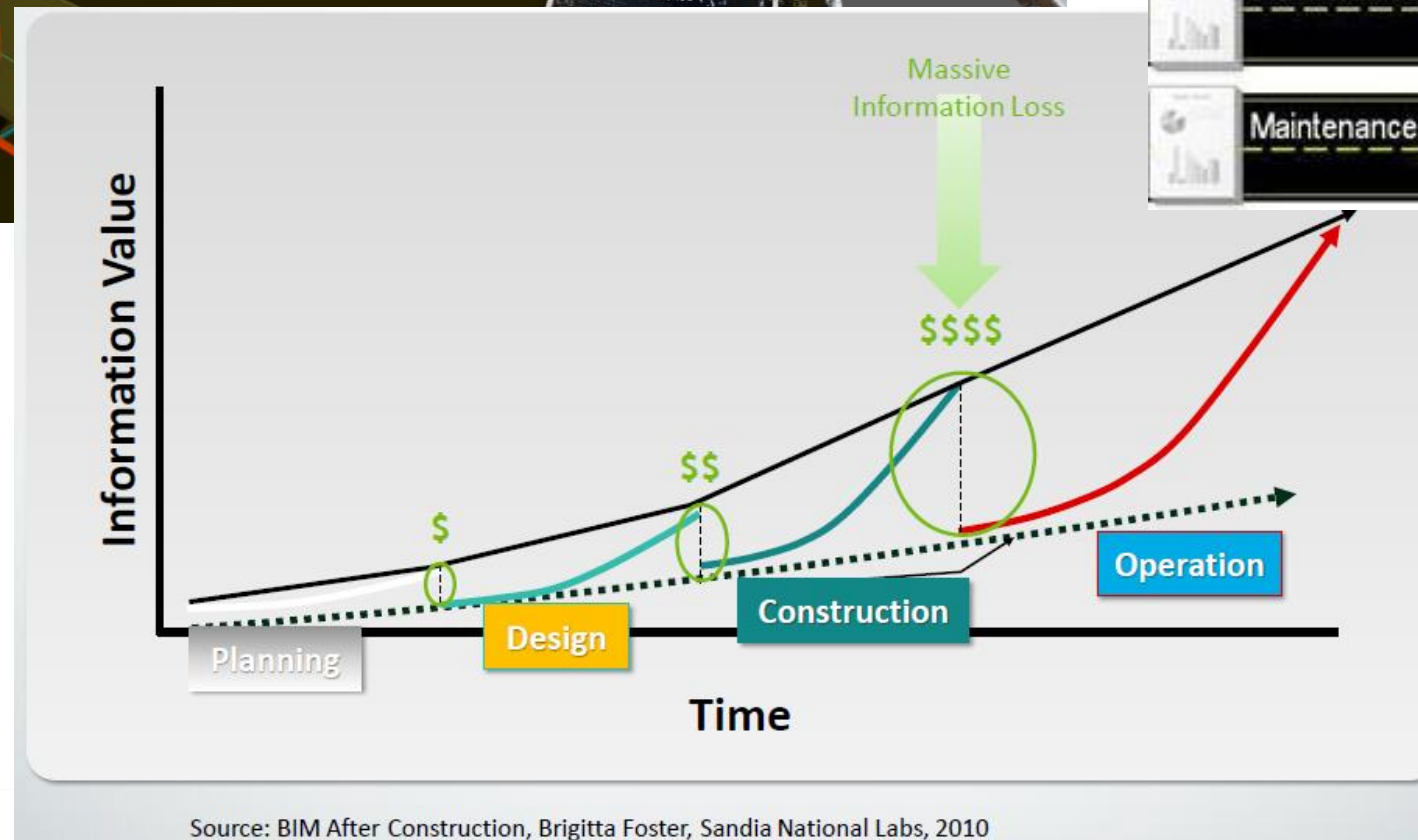
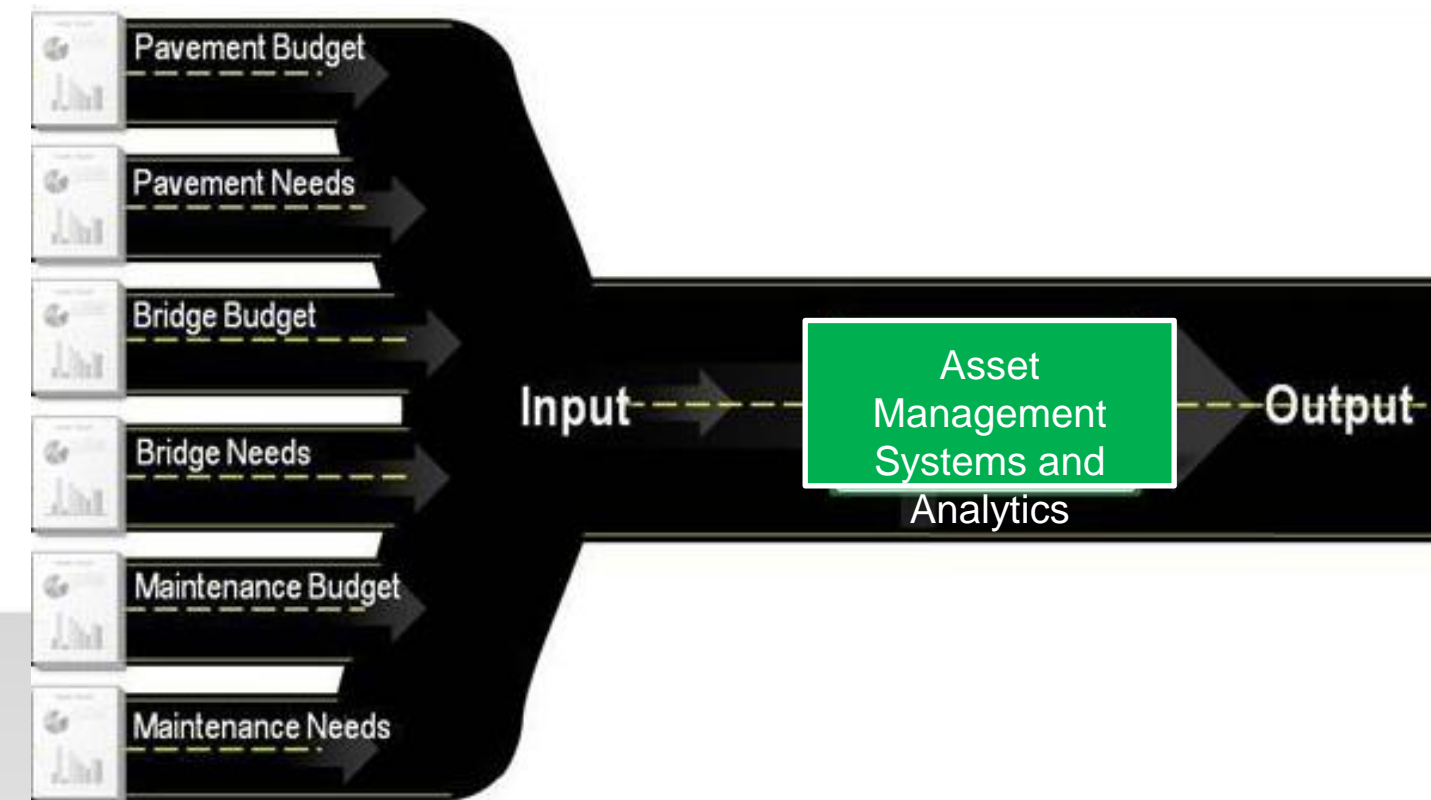
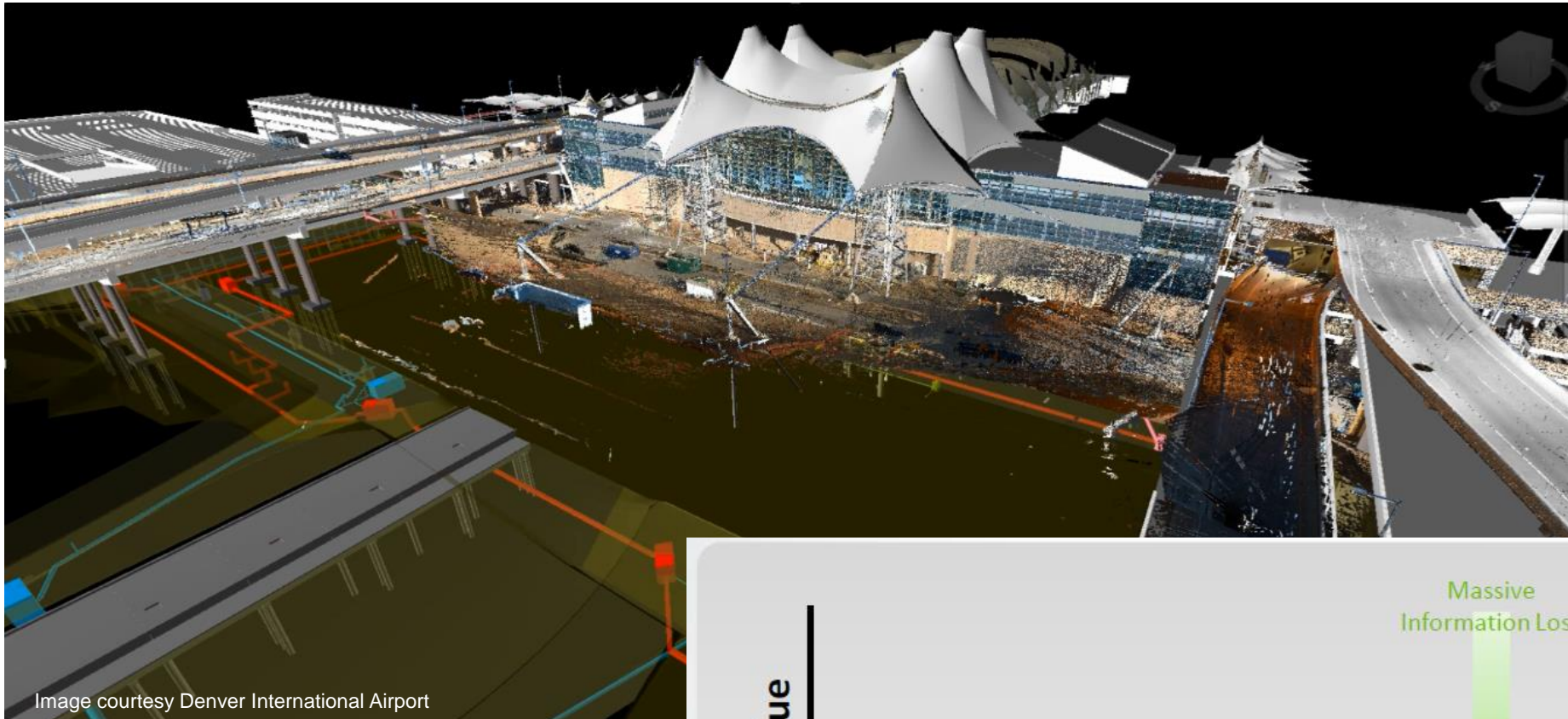
Image courtesy Kelproyectos

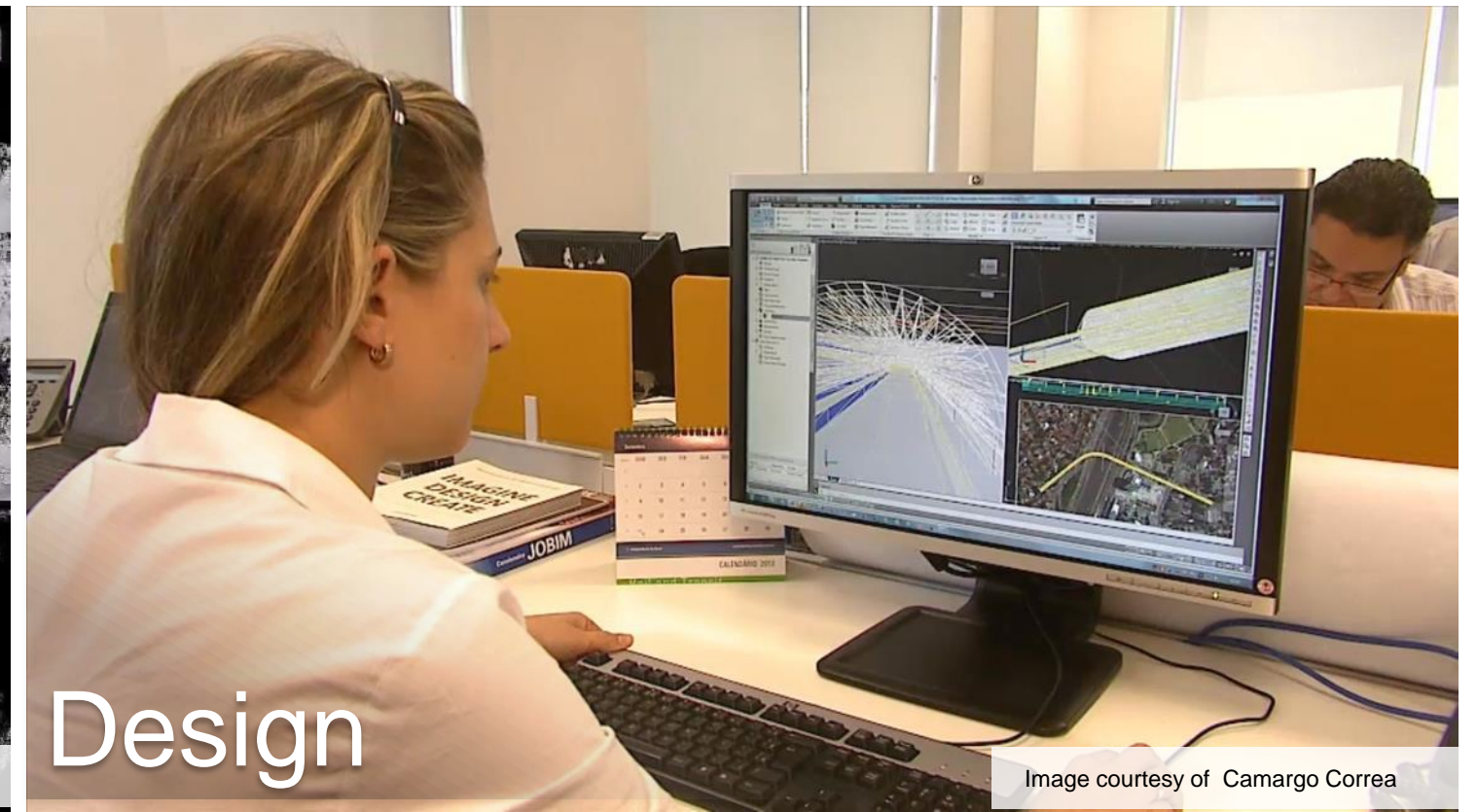
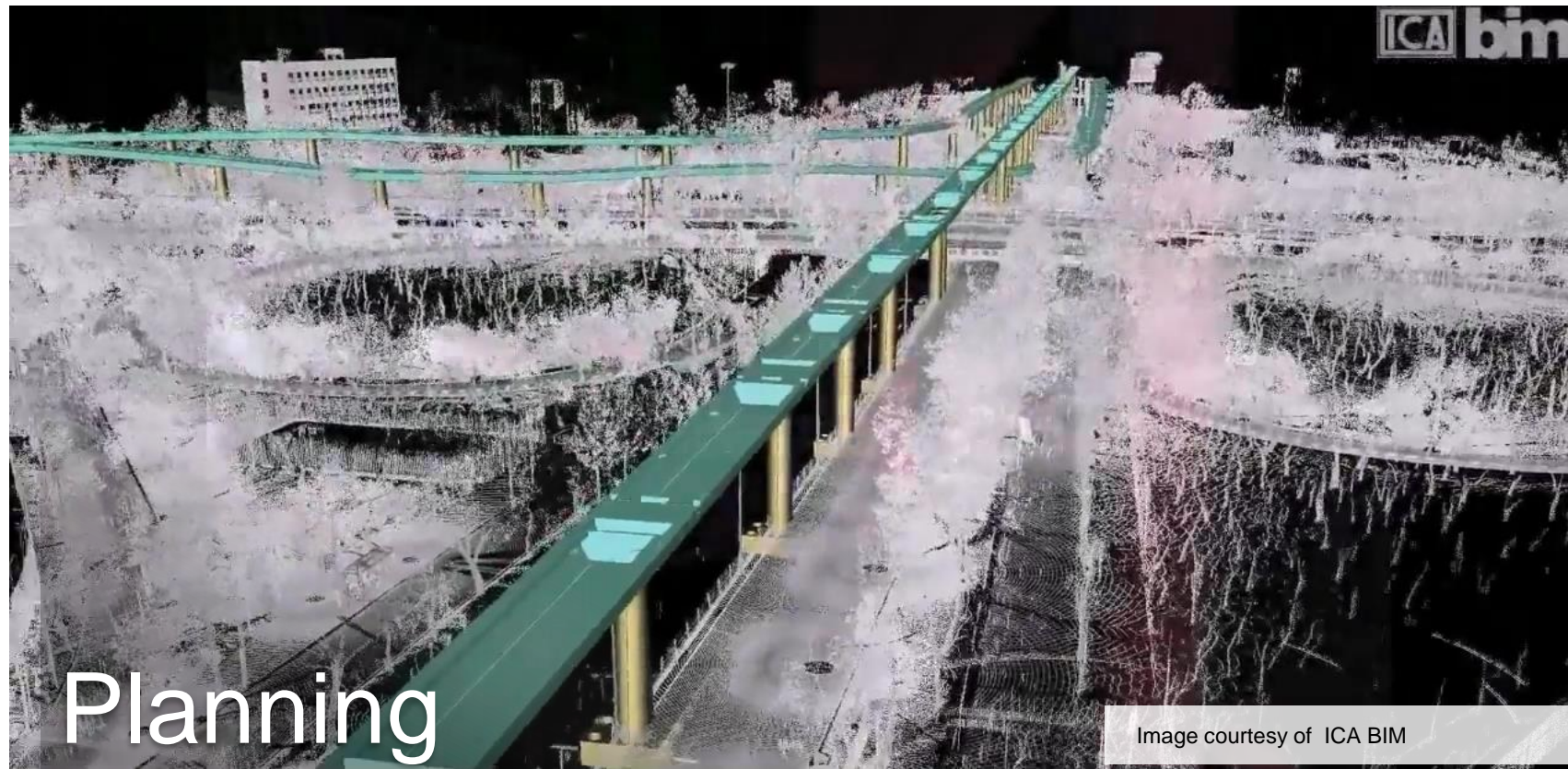


Construction



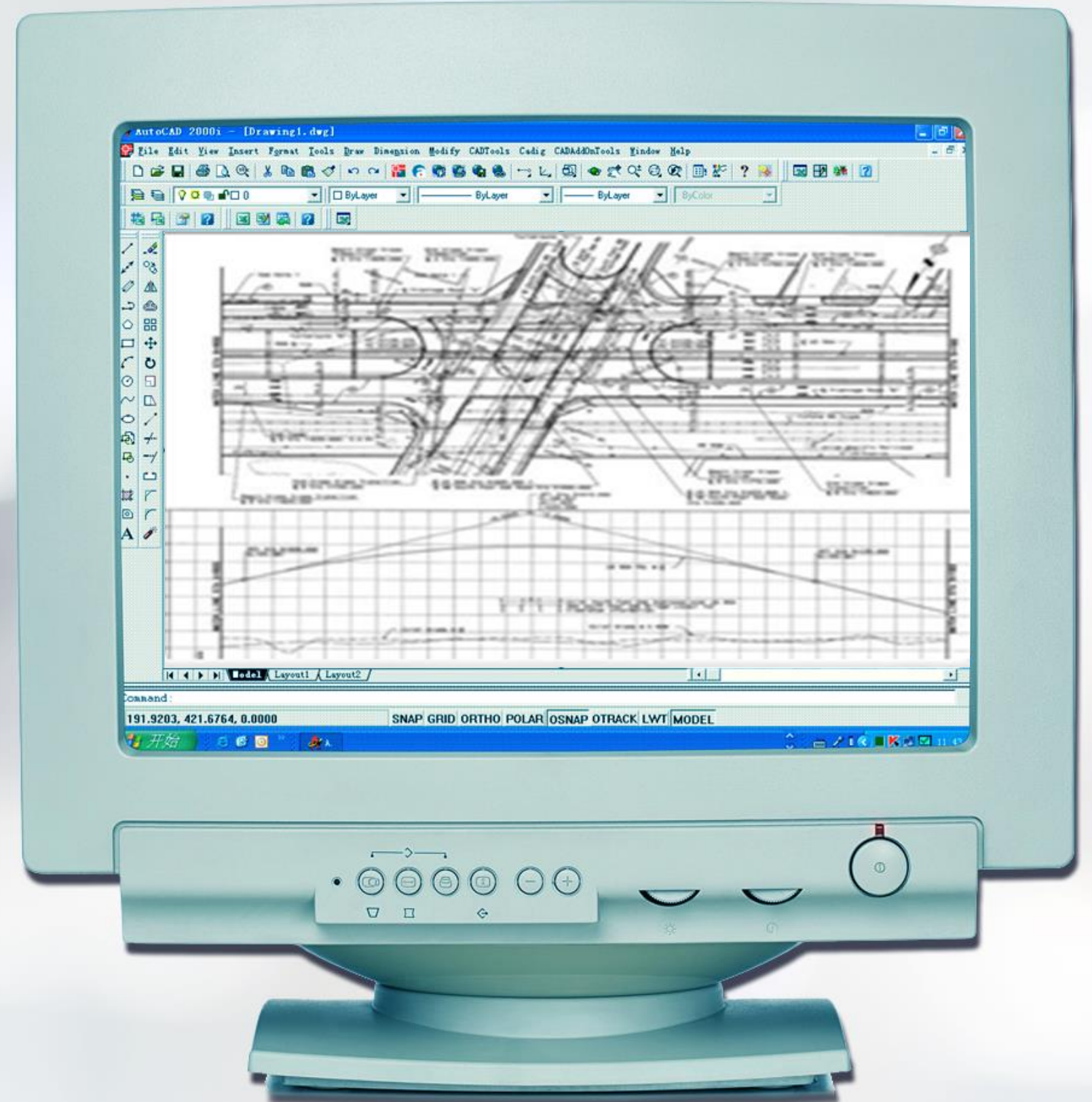
Operations & Maintenance





Managing the Digital Disruption

ERA OF DOCUMENTATION



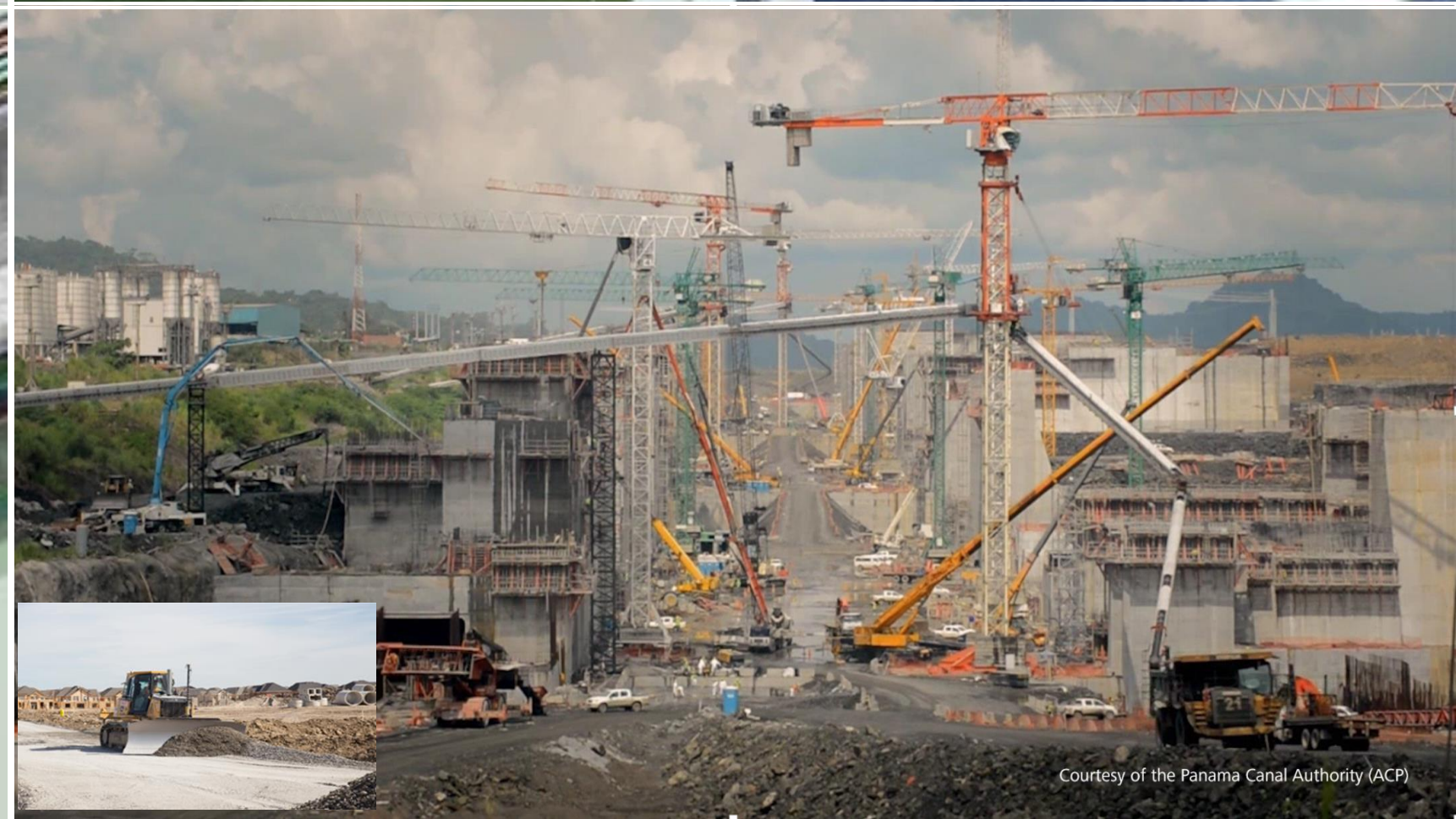
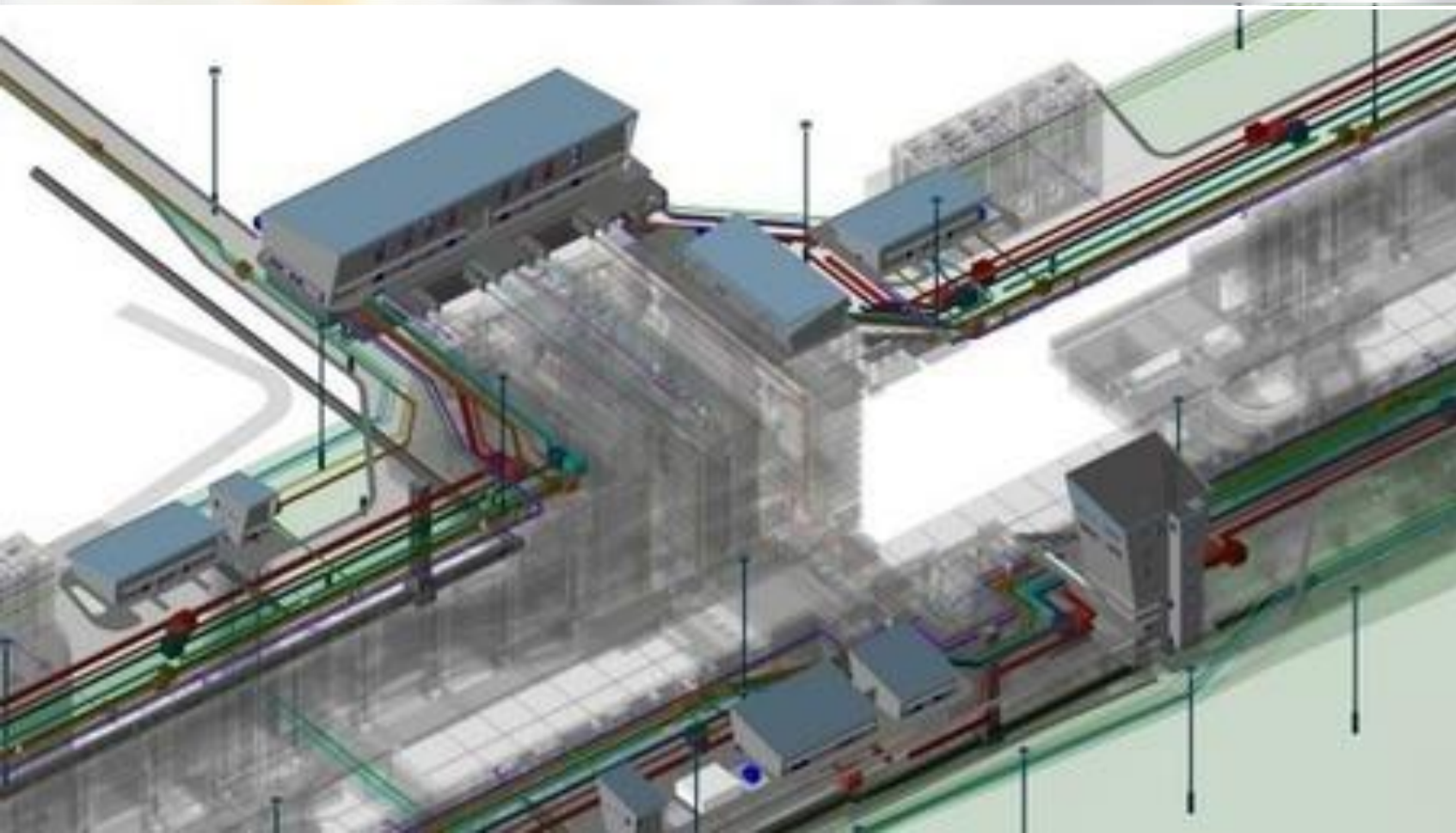
ERA OF DOCUMENTATION



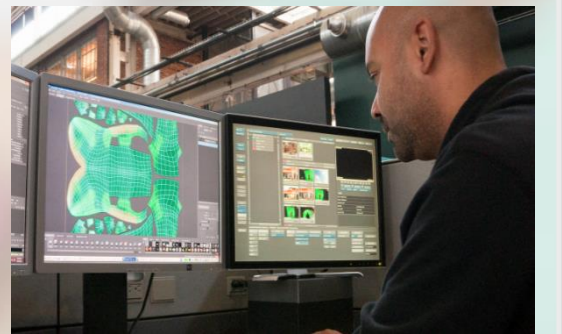
ERA OF OPTIMIZATION

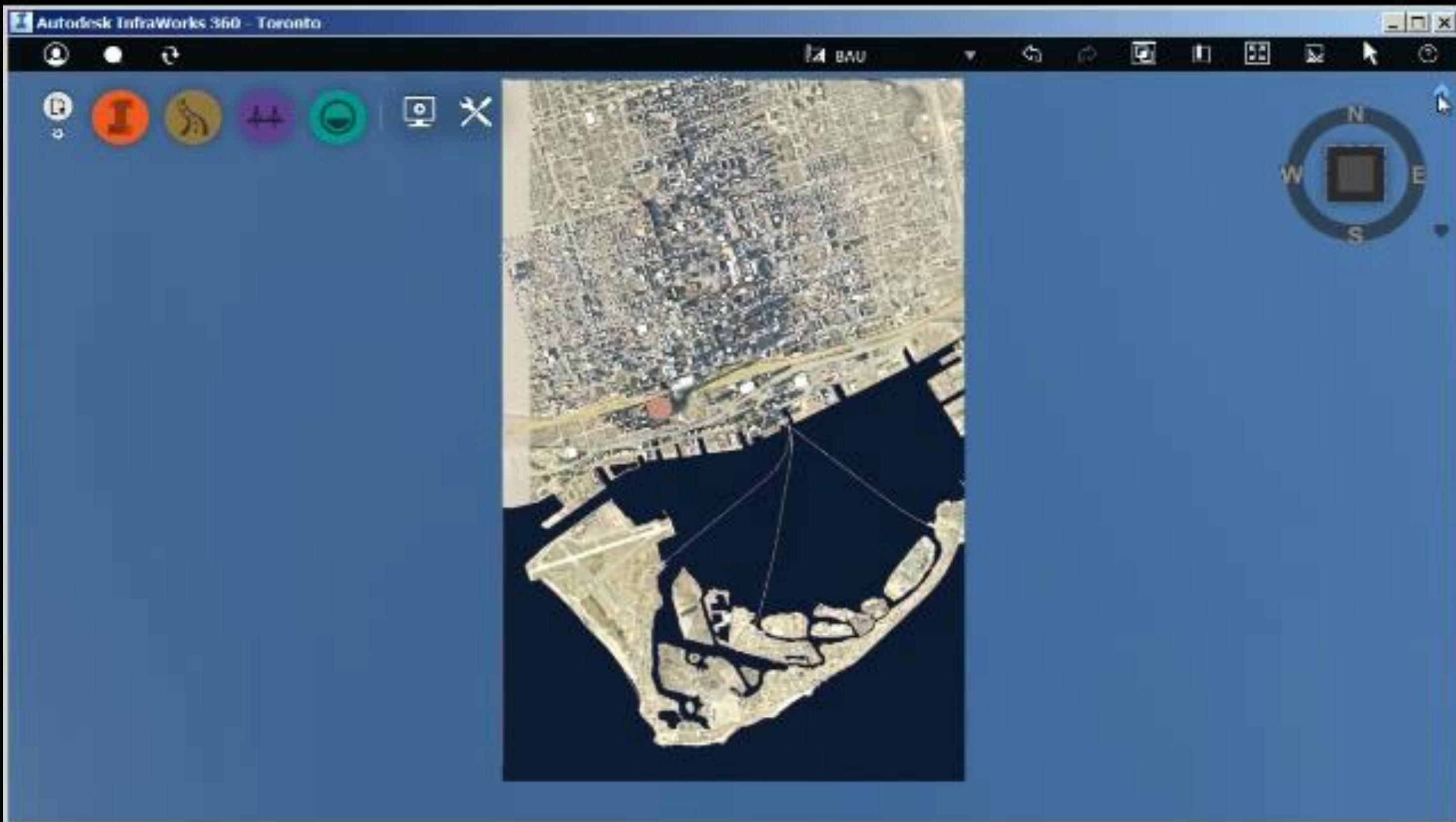


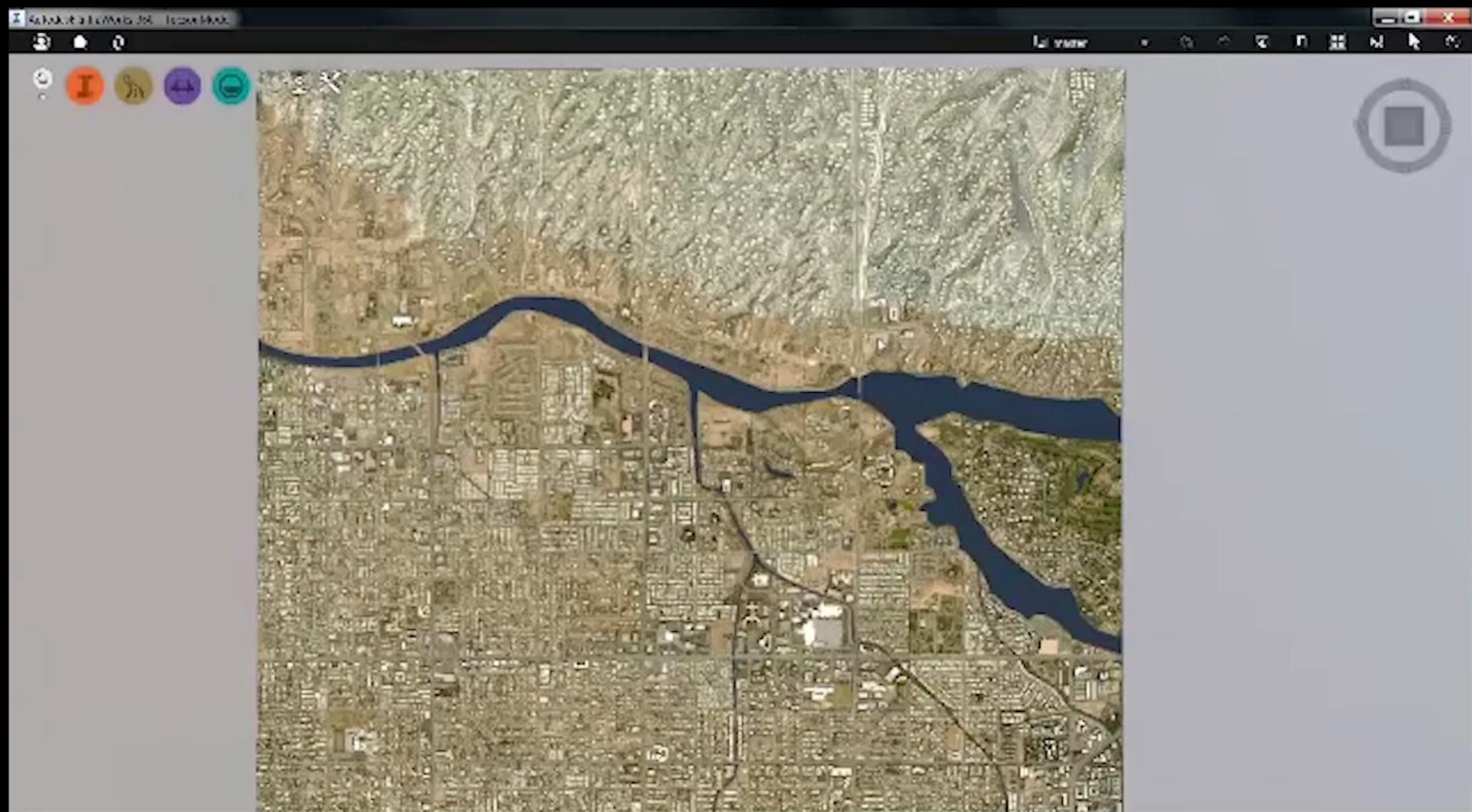
ERA OF OPTIMIZATION

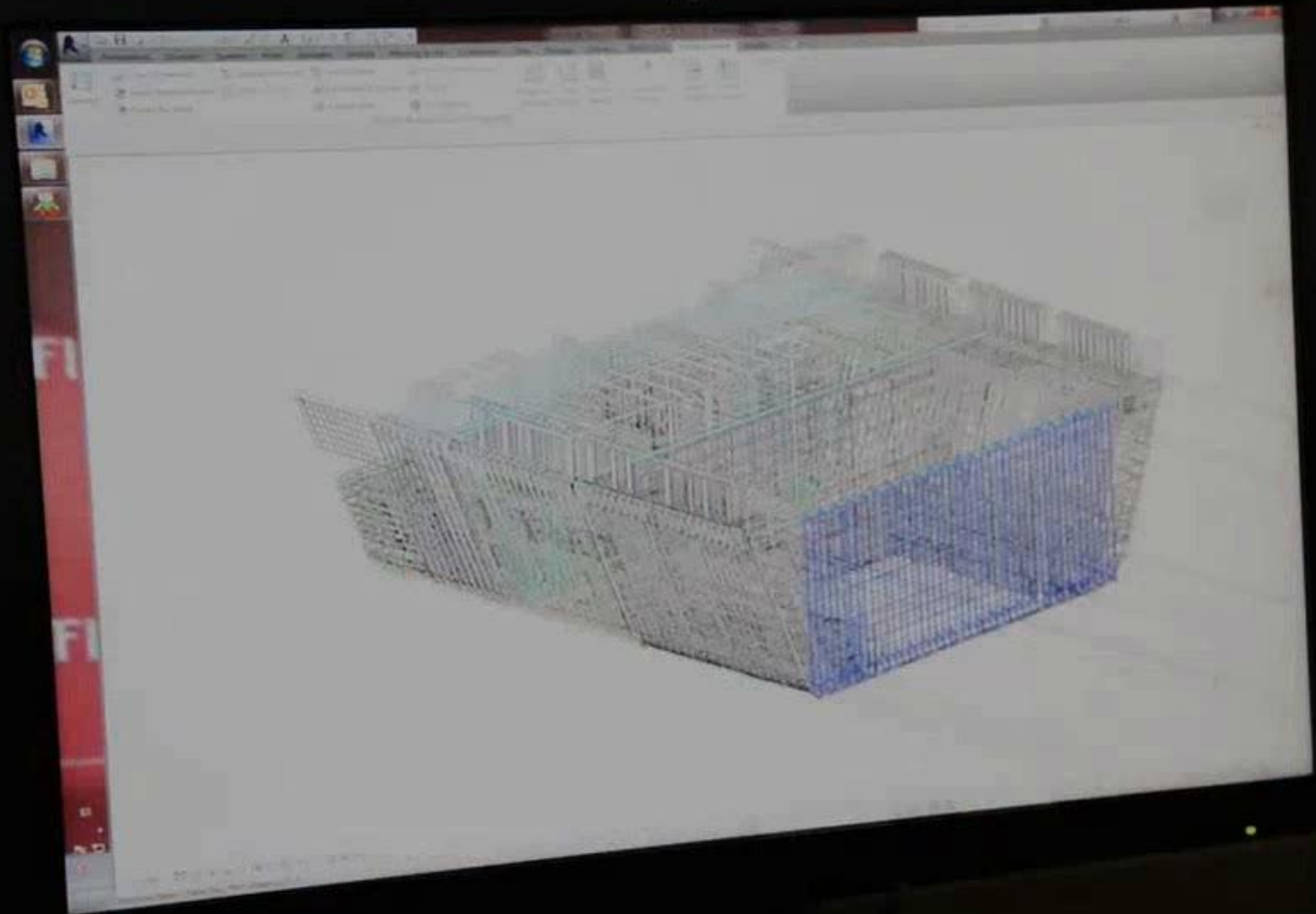


A close-up photograph of a person's hand, showing the thumb and index finger extended. A small, dark, circular mark is visible on the thumb. The background is a plain, light-colored surface.









BIM Mandates





Autodesk is a registered trademark of Autodesk, Inc., and/or its subsidiaries and/or affiliates in the USA and/or other countries. All other brand names, product names, or trademarks belong to their respective holders. Autodesk reserves the right to alter product and services offerings, and specifications and pricing at any time without notice, and is

not responsible for typographical or graphical errors that may appear in this document.
© 2014 Autodesk. All rights reserved.

Computational Design | Bridges



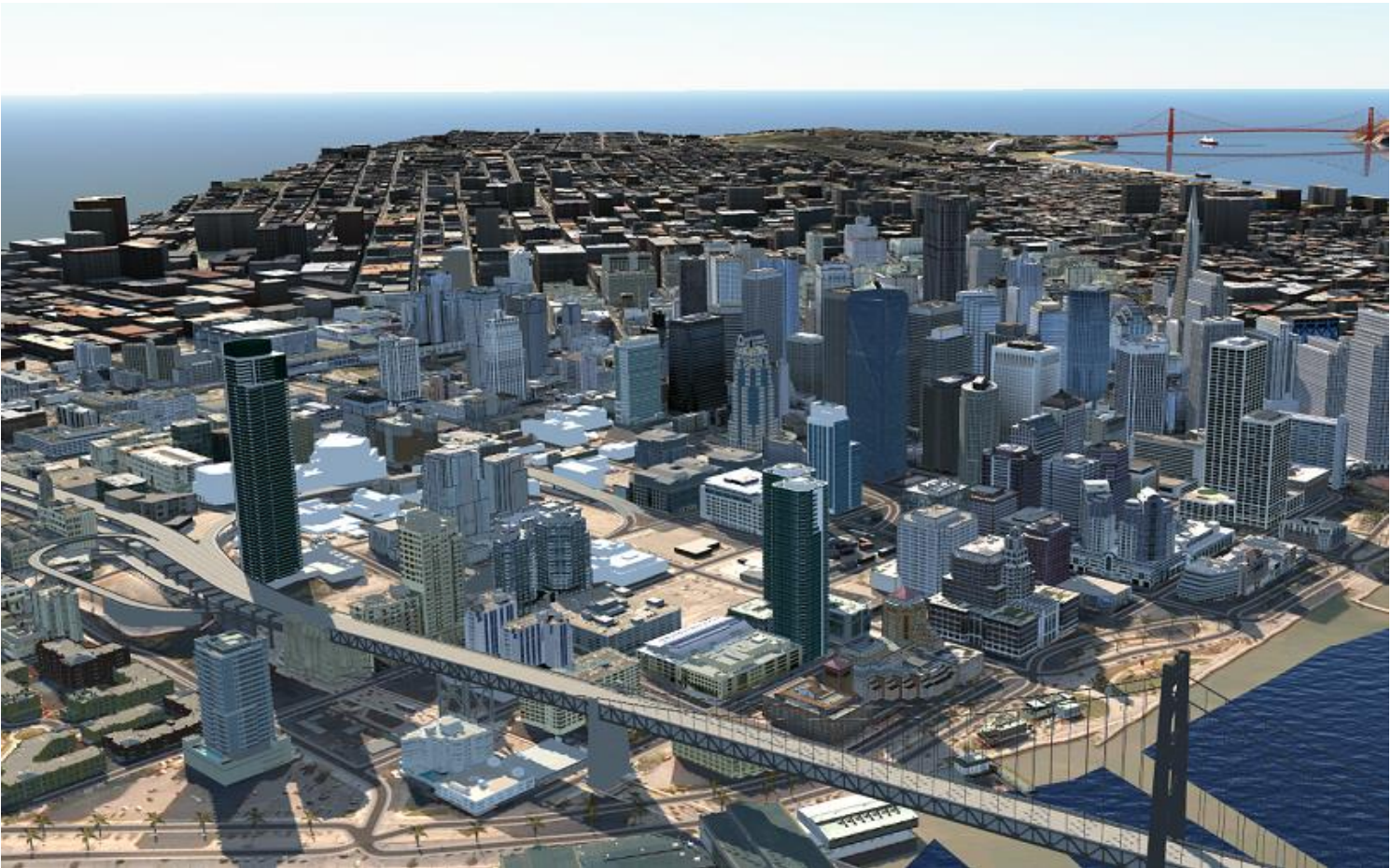


“The role of technology is central to the task of making sure that infrastructure investment has something to do with the kind of society, and the kind of capabilities, we need to provision in order to combine the growth, sustainability, inclusion and innovation that the world of the future demands.”

– Dr. Ken Henry, former Sec. Dept. of Treasury, Australia



Astro



Courtesy of WETA™ and © Twentieth Century Fox Film Corporation. All rights reserved. Not for sale or duplication.