

PENGENALAN REKABENTUK LAMPU JALAN

Ir. ANA SALMI BINTI AHMAD SALMAN

Jurutera Elektrik Kanan

Unit Pensijilan Bahan dan Standard

Caw. Kejuruteraan Elektrik

Ibu Pejabat JKR Malaysia

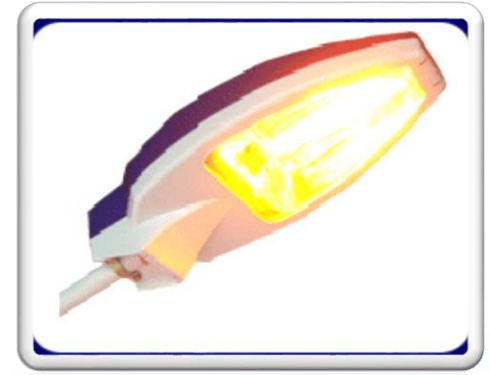
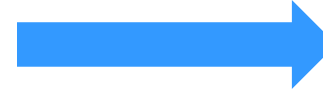
Tel : 03-2618 9907

Email : anasalmi@jkr.gov.my

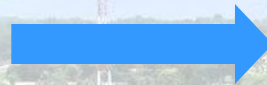


JENIS LAMPU JALAN

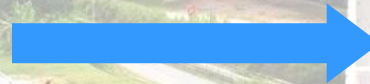
❖ High Pressure Sodium Vapour (HPSV)



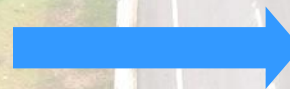
❖ Metal Halide



❖ Induction



❖ Solid State Lighting (LED)



JENIS TIANG LAMPU JALAN

❖ Hot Dipped Galvanised

❖ Fibreglass Reinforced

❖ Pre-Stressed Spun Concrete



SISTEM LAMPU JALAN

- 1) **Luminous flux, ϕ (lm)** – The amount of light radiated from a light source.
- 2) **Luminous Intensity, I (cd)** – Amount of light leaving the source propagated in an element or solid angle containing the given direction and the element of the solid angle.
- 3) **Illuminance, E (lux)** - Luminous flux incident on an element of the surface
- 4) **Luminance, L (cd/m²)** – luminous intensity unit area of travelling light in a given direction





**LUMINOUS FLUX
(LUMEN)**

1

2

**LIGHT
INTENSITY
(cd)**



**LUMINANCE
(cd/m²)**

4

ROAD SURFACE

3

ILLUMINANCE (LUX)



1 & 2 = **FROM LIGHT
SOURCE**

3 & 4 = **RESULTS OF
LIGHT SOURCE**



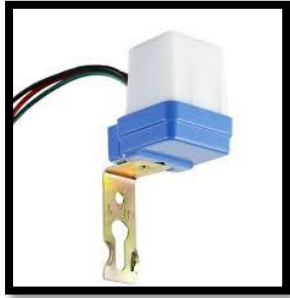


SERVICE DOOR



TERMINAL BLOCK / MODULAR TERMINATION BOX

PHOTOCELL



Photocells act
as light sensors



HIGH-MAST LIGHTING



High-mast lighting is a tall pole
with [lighting](#) attached to the top pointing
towards the ground



PLANTED TYPE POLE



CONCRETE BASE/FOUNDATION

FLANGED TYPE POLE

DECORATIVE POLE





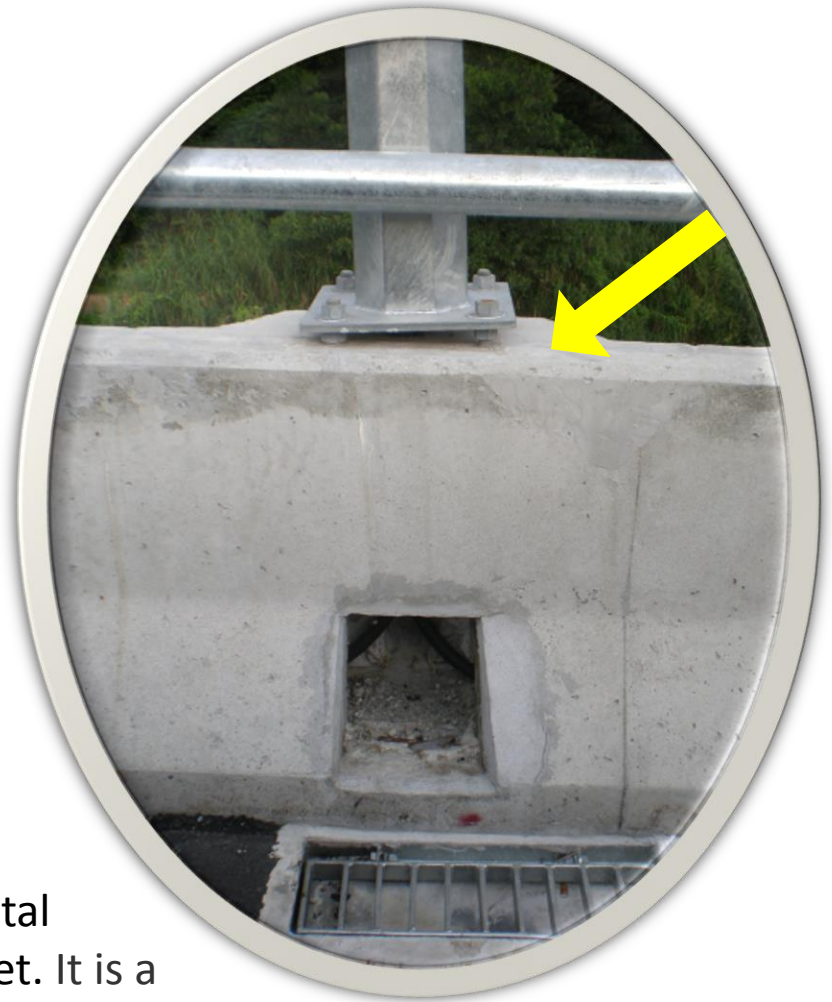
FEEDER PILLAR

PARAPET WALL



A [parapet](#) wall is a low wall, usually enclosing a roof, or a protective barrier at the edge of a terrace or on the side of a bridge. In modern use, one is constructed to provide a barrier to prevent people or objects from falling from the edge of the structure

CORBEL



A **corbel** is a structural piece of stone, wood or metal jutting from a wall to carry weight, a type of bracket. It is a bracket or support attached to and protruding from a wall. Corbels are laid in brickwork, built from wood for millwork, and made from metal for structural support of an offset load, such as on a column.

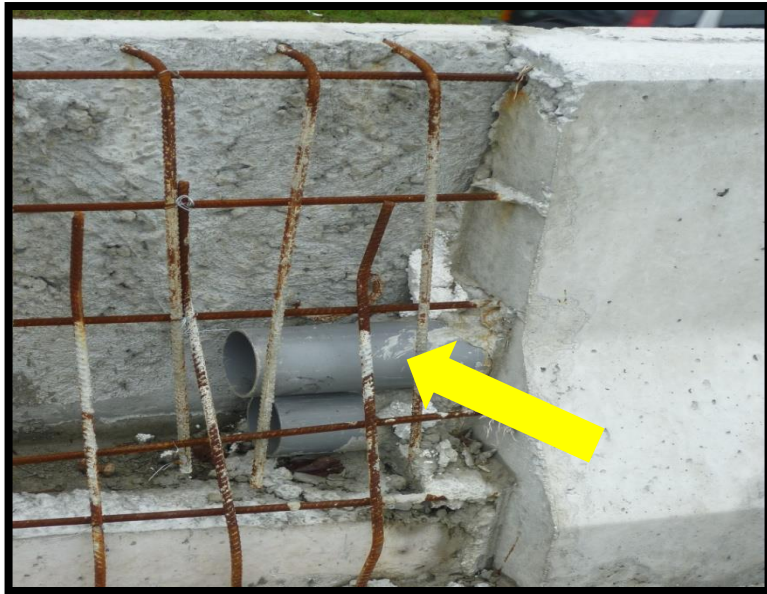
NEW JERSEY BARRIER (NJB)



Jersey Barriers are designed to redirect a crash, using the car's momentum to absorb the impact and slide the vehicle up parallel along the side of the barrier to prevent a rollover.



CABLE DUCTS



- Galvanised steel pipe
- uPVC pipe
- HDPE corrugated pipe

GUARDRAIL



A strong fence at the side of a road or in the middle of an expressway, intended to reduce the risk of serious accidents; a crash barrier

ROAD KERB



The edge where a raised sidewalk/pavement or road median/central reservation meets a street or other roadway.

MEDIAN



The strip of land between the carriageways of a motorway or other major road; a central reservation.



PAVEMENT

ASPHALT



CONCRETE



The hard surface of a road or street

PAVED SHOULDER



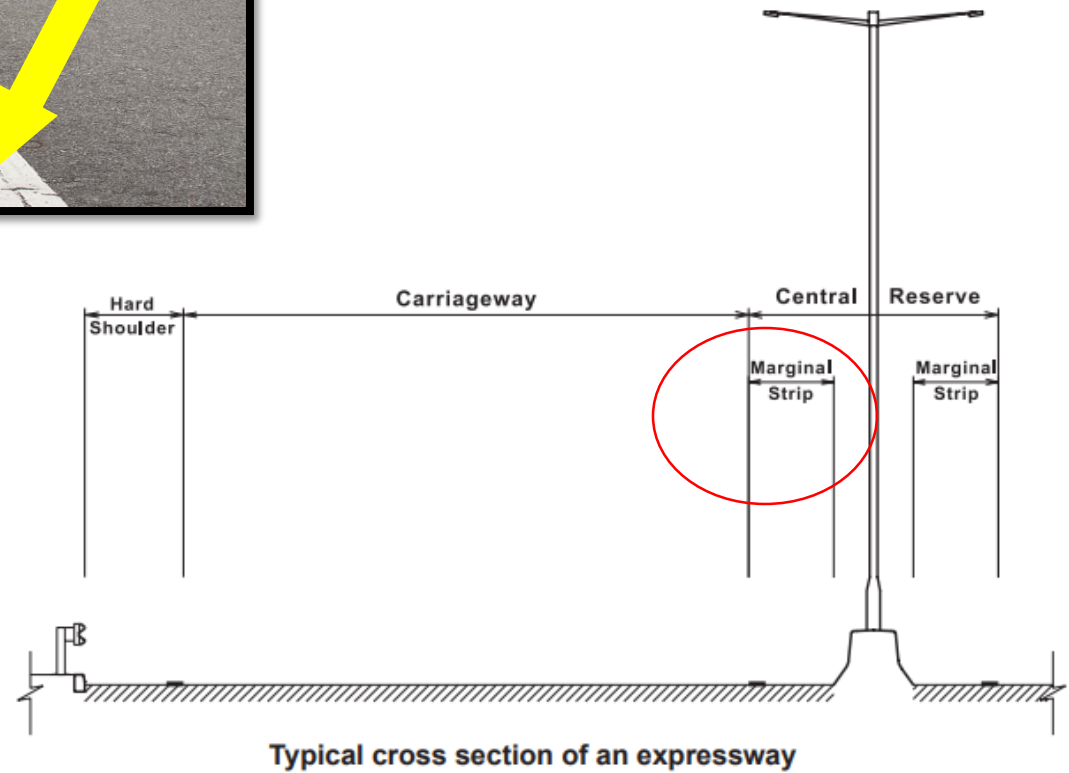
TRAFFIC ISLAND



GHOST ISLAND



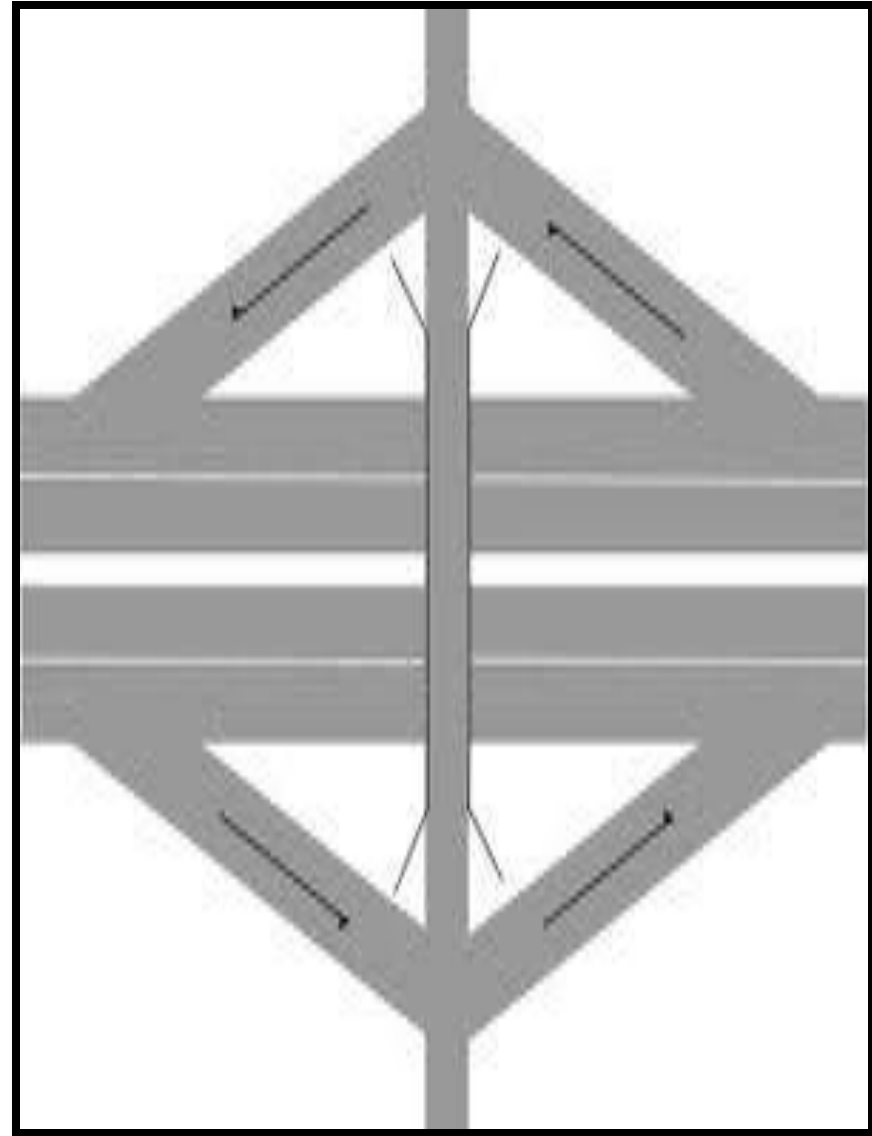
MARGINAL STRIP & EDGE LINE



CLOVERLEAF INTERCHANGE



DIAMOND INTERCHANGE



TRUMPET INTERCHANGE

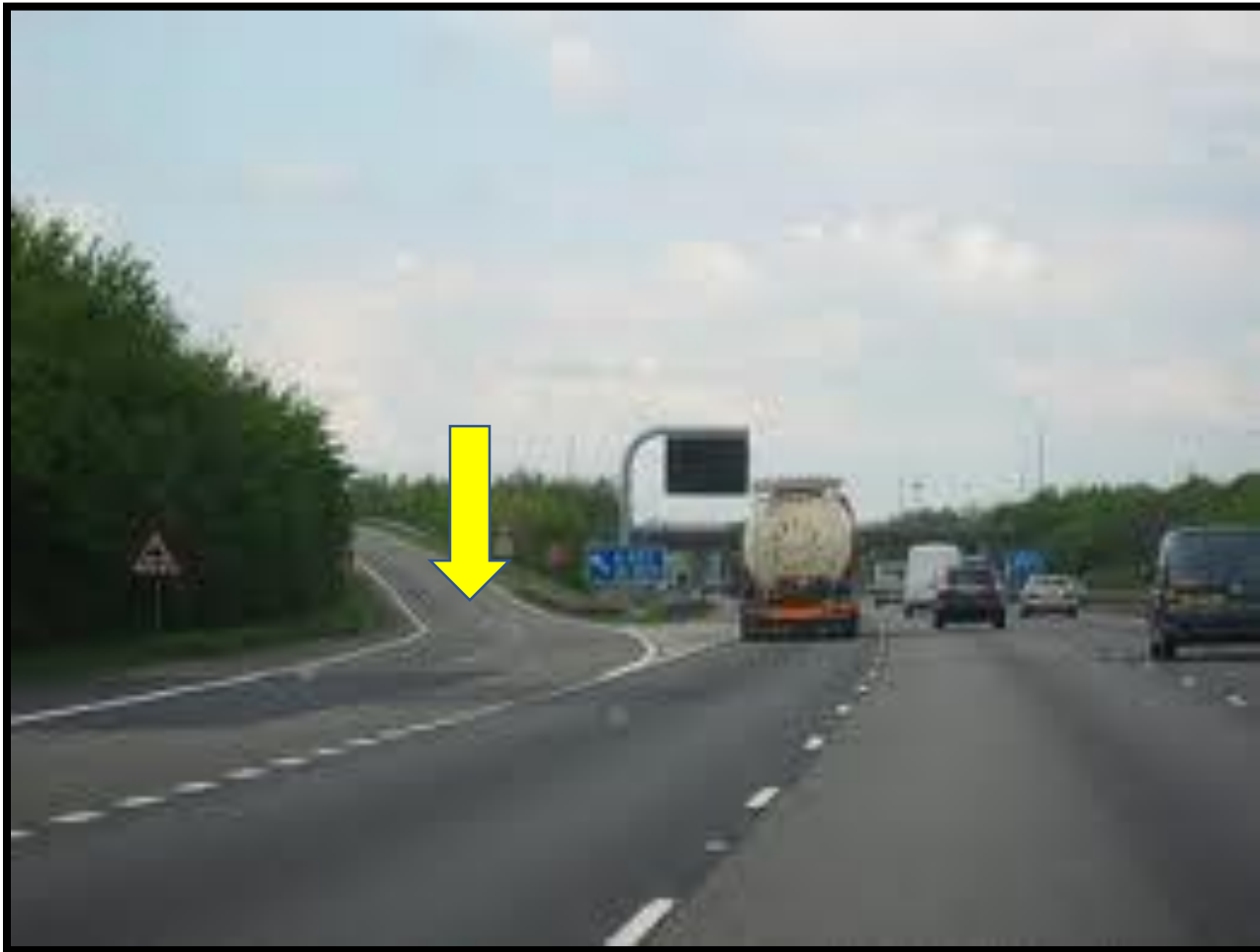


UNDERPASS

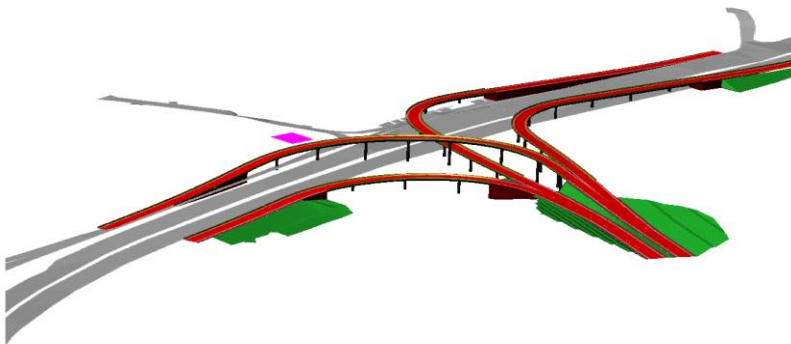
a road or pedestrian tunnel passing under a road or railway



SLIP ROAD



a road entering or leaving a motorway or dual carriageway



ROAD CATEGORY AND APPLICATIONS

ANA SALMI AHMAD SALMAN

KURSUS REKABENTUK LAMPU JALAN


















RURAL

Standard	Max design speed limit (km/h)	Minimum lane width (m)	Access control	Application
JKR R6	120	3.5	Full	Expressways under the administration of Malaysian Highway Authority (MHA)
JKR R5	100	3.5	Partial	Primary roads and partial access highways for the Federal JKR
JKR R4	90	3.25	Partial	Main / secondary roads
JKR R3	70	3.0	Partial	Secondary roads
JKR R2	60	2.75	None	Minor roads Note: JKR R2 is the minimum geometrical standard for 2-lane roads
JKR R1	40	(5.0)*	None	Single-lane minor roads (village roads)
JKR R1a	40	(4.5)*	None	Single-lane roads (roads to restricted areas such as quarries)

URBAN

Standard	Max design speed limit (km/h)	Minimum lane width (m)	Access control	Application
JKR U6	100	3.5	Full	Expressways under the administration of Malaysian Highway Authority
JKR U5	80	3.5	Partial	Arterial roads and partial access municipal highways
JKR U4	70	3.25	Partial	Arterial / collector roads
JKR U3	60	3.0	Partial	Collector roads / Local streets
JKR U2	50	2.75	None	Local streets Note: JKR R2 is the minimum geometrical standard for 2-lane roads
JKR U1	40	(5.0)*	None	Single-lane street (in towns)
JKR U1a	40	(4.5)*	None	Single-lane street (as in low-cost housing areas)

Type of federal roads and route number categories

Examples	Information	Number digits
  	Main federal route numbers	001 - 249
 	Institutional facilities federal roads	250 - 479
EXIT 226	Federal road exit numbers	EXIT 201 - EXIT 299
  	Main federal route numbers (Sarawak)	1-1 - 1-59 3-1 - 3-99
  	Main federal route numbers (Sabah; old numbering system)	A01 - A99
  	Main federal route numbers (Labuan)	700 - 799
 	FELDA/FELCRA federal route numbers	1000 - 1999 2000 - 2999
	Industrial federal route numbers	3000 - 3999



ANA SALMI AHMAD SALMAN