

2016
K007

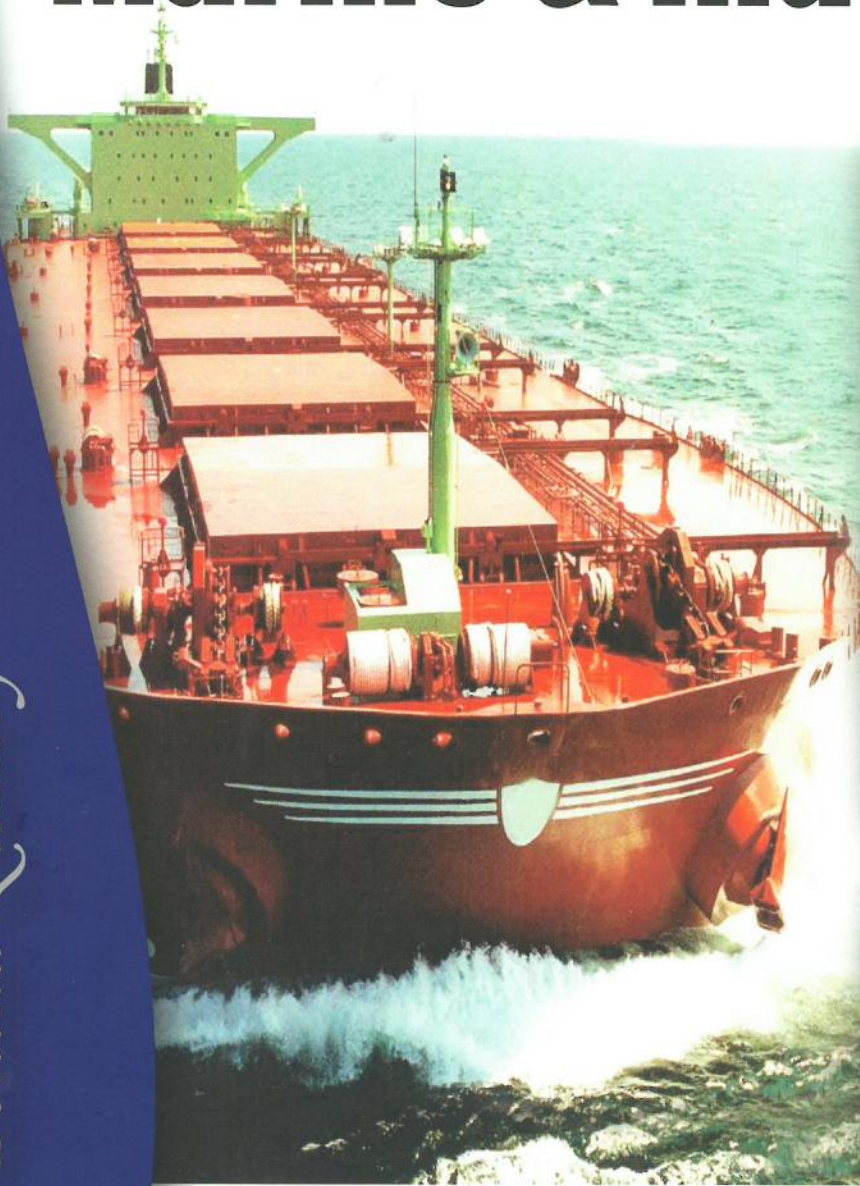
KOSSAN

PAINT

Colour Card

Marine & Industrial

Name Behind Quality



CONVENTIONAL



RED LEAD PRIMER
PRIMER 1.20



KOSRAPID Z/C
PRIMER FDP-001



ZINC CHROMATE
PRIMER 1.21



KOSRAPID Z/P
PRIMER FDP-002



RED OXIDE
PRIMER 1.22



ZINC PHOSPHATE
PRIMER 1.24

HEAVY DUTY



TRANPOXY RED
PRIMER 1.16



TRANPOXY MIO
PRIMER 1.65



TRANPOXY UNIVERSAL
PRIMER 1.657



TRANPOXY ZINC
RICH PRIMER 1.79



TRANPOXY Z/P
PRIMER 1.81HS



TRANSOZINC SILICATE
SOLVENTBORNE 1.52

PVB ETCHING PRIMER FOR NON-FEROUS METAL



KOSETCHING PVB
PRIMER 1.00



KOSETCHING PVB
PRIMER SP-1.02

HIGH SOLIDS ST EPOXY PRIMER/UNDERCOAT



TRANSVINPOX
2.06 HS



TRANPOXY
MASTERBOND 4.66

MICACEOUS IRON OXIDE (M.I.O)



SILVER GREY
M.I.O 7012



MEDIUM GREY
M.I.O 7013



DARK GREY
M.I.O 7014

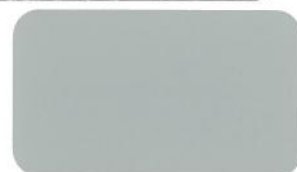


BLACK GREY
M.I.O 7015

CHEMICAL RESISTANCE COATINGS



TRANPOXY TANK
GUARD 4.61

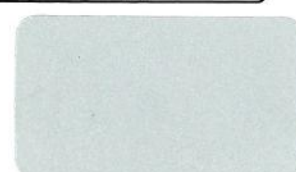


TRANPOXY DEEP
TANK 4.62

HIGH HEAT RESISTANCE



TRANSLAC ALUM.
HR 5.11 (200 °C)



TRANSOSIL ALUM.
5.16 (600 °C)

ANTICORROSIVE COATINGS



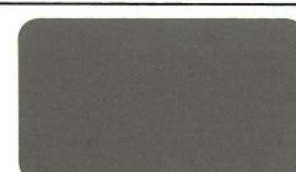
TRANPOXY TAR
AA 2.12 BLACK



TRANPOXY TAR
AA 2.12 DARK BROWN



TRANSBARRIER A/C
2.02 BLACK



TRANSVINYL A/C
2.04

TRANSBOX UNIKOTE 2.45 CONTAINER PAINTS



C-975 (9107)



C-943 (2148)



C-958 (5240)



C-1000 (5101)



C-974 (9105)



C-945 (2100)



C-965 (5200)



C-960 (5510)



C-984 (9156)



C-946 (2130)



C-954 (3170)



C-966 (6125)



C-980 (9170)



C-939 (1005)



C-955 (3190)



C-968 (6160)



C-950 (2690)



C-944 (3120)



C-953 (3150)



C-969 (7160)



C-993 (9122)



C-999 (1050)



C-951 (3060)



C-971 (7150)

TROPICAL / LONGLIFE

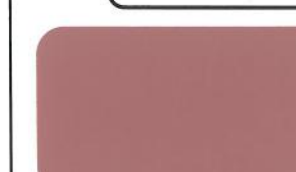


TROPICAL A/F
KCI-04 / 07 / 08



LONGLIFE A/F
2.71 (KCI-09 / 10)

SELF-POLISHING TIN-BASED ANTIFOULING

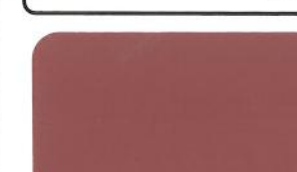


PINK / RED BROWN
2.82 (SPC-12)



BLUE / GREEN / BLACK / RED
2.88 (SPC-22)

TIN-FREE SELF-POLISHING ANTIFOULING PAINTS 2.90 / 2.95



RED



SKY BLUE



GREEN



BLACK

MARINE & PROTECTIVE STANDARD COLOUR

							
LILY WHITE 913	DOVE WHITE 921	LAVENDER WHITE 215	MISTRAL 490	SEAGREEN 019 (T.O.31)	CRYSTAL BLUE 505	ORANGE 017	SAKURA 433
							
PEARL WHITE 915	ROSETTE 803	DAWN GREY 693	SILVER GREY 739 (T.O.56)	DEEPEA GREEN 119	TANJUNG 032	RESCUE ORANGE 020 (T.O.62)	CELEBRATION 494
							
OFF WHITE 933	JASMINE 497	VENUS 002	LICHEN GREEN 011	TURQUOISE 006	CHINA BLUE 642	RUSTIC 332	OAK 322
							
IVORY 831	SIGNAL YELLOW 078 (T.O.12)	SMOKE GREY 695	TROPICANA 026	OPAL GREEN 644	OLYMPIC BLUE 655	SIGNAL RED 437 (T.O.64)	DEEP LEATHER 116
							
MAPLE 847	GOLDEN YELLOW 456	EXERCUTIVE GREY 104	JADE GREEN 048	PANGKOR 005	NEPTUNE 031	CHILLI RED 808	WOODEN OLIVE 911
							
MIDDLE MAST 222 (T.O.22)	JUTE 852	MIDDLE GREY 158 (T.O.58)	SIGNAL GREEN 178 (T.O.38)	PETRONAS GREEN 008	PACIFIC BLUE 487	WIRA BLUE 035	ANTIQUÉ 037
							
NUTMEG 043 (BS 3-043)	GOLDEN HONEY 727	DARK GREY 012 (T.O.59)	BOTTLE GREEN 426 (T.O.39)	CATALINA 489	MARINE BLUE 649	ULTRAMARINE BLUE 645	LEATHER 807

* Also available in White 101 and Black 122

* Colour shown in this colour card are as close to actual colours as modern printing techniques allow.

* Special colour available upon request.

* 预备有白色101与黑色122

* 图中所示色彩是现代印刷技术所能达到的最接近实际的颜色。

* 还有多种特别的颜色以供顾客的要求。

* Super Gloss Finish 6000-S

* Marine High Gloss Finish

A6-XXX

A9-XXX

* Epoxy Finish E-series

* Polyurethane Finish P-series

E-XXX

P-XXX

PAINTING SYSTEM GUIDE

MARINE FOR SHIPS/BOATS

Type of Substrates	Type of Products System Combination	Primer		Under Coat		Finish / Top Coat	No.Of Coat
Steel Surfaces (Underwater Area)	Bituminous/Tropical	2.02	2 coats	-	1-2 coats	KCI-04 (or) 07 (or) 08	2 coats
	Epoxy/long life/ Tin-free Self-Polishing Antifouling	1.16 (or) 1.79	1 coat	2.06HS	1 coat	KCI-09 (or) KCI-10 (2.71) (or) 2.90 (or) 2.95	
		2.12	2 coats	2.06HS	1 coat		
		4.66	1coat	2.06HS	1 coat		
Wooden Surfaces (Underwater Area)	Epoxy / Longlife / Tin-based & Tin-free Self-Polishing Antifouling	4.66 (or) 2.06HS	1 coat	N.R	-	KCI-09 (or) KCI-10 (2.71) (or) 2.90 (or) 2.95	2 coats
F.R.P/Aluminium Surfaces (Underwater Area)	Epoxy/long life/ Tin-free self Polishing Antifouling	4.66 (or) 2.06HS	1 coat	N.R	-	KCI-09 (or) KCI-10 (2.71) (or) 2.90 (or) 2.95	2 coats
Steel Surfaces (Above Water Area)	Alkyd	1.22 (or) 1.24	1 coat	3.21	1 coat	A9-000 Series (3.31)	1-2 coats
	M. Alkyd/Acrylic	FDP-002	1 coat	N.R	-	ACY-Series	
	Epoxy / Epoxy (or) PU	4.66	1 coat	N.R	-	4.60 (or) 3.43	
	Chlorinated Rubber	1.26	1 coat	1.54	1 coat	2.53 (or) 2.45	
Wooden Surfaces (Above Water Area)	Alkyd	3.21	1 coat	N.R	-	A9-000 Series (3.31)	1-2 coats
		N.R	Varnish 3.81				
	Epoxy/Epoxy (or) P.U	4.66 (or) 2.06HS	1 coat			4.60 (or) 3.43	
	Chlorinated Rubber	1.26	1 coat			2.53 (or) 2.45	
F.R.P/Aluminium Surfaces (Above Water Area)	Epoxy / Alkyd (or) Epoxy (or) P.U	4.66 (or) 2.06HS	1 coat	N.R	-	A9-000 Series (3.31) / 3.43	2 coats

SURFACE PREPARATION

It is essential to have a properly prepare surface to ensure precise and long lasting coating performance.

Steel

Oil and grease should be removed by solvent cleaning. Remove weld spatter and smooth weld seams and sharp edges as applicable. Abrasive blasting: min. Sa 2,5-ISO 8501:1. Apply the suitable primer immediately after the steel has been blasted. Corroded areas should be power tool cleaned to ISO-St3 or blast cleaned to ISO-Sa2 or better. Existing systems should be dry and free from loose paint, salt, grease and other contaminants prior to overcoating.

Galvanized (or) Non-ferrous Metals

Treat surface with Gelclean followed by light blast cleaning with a fine grade, inert abrasive or by using suitable power tools such as disc sanders, make sure surface are dry clean and free from oil, grease, dirt and other contaminants.

Timber/Wood

Ensure surface is dry. Sand and remove the remaining dust with dry rags or rags slightly dampened with water (not solvent). Wood crack or poles should first be repair with suitable wood filler follow by sanding to smoothen the surface prior to painting.

GRP

Ensure surface is dry and free from traces of wax, lubricants and other contaminants. Suitable power tools such as disc sanders or manual sanding with suitable grade of sand paper to roughen the surface if necessary. Treat if required with Transocean Gelclean.

Concrete Surface

New concrete floors should be a minimum of 28 days and must be dry to below a moisture content of 4%. For adequate adhesion of coatings to concrete surface should be free of laitance and have the texture of medium sandpaper. If this is not the case, the surface should be etch with KOSFLOR Concrete Etch solution to provide the texture, the floor is then wash to remove free acid and allowed to dry thoroughly prior to painting.

Remarks: For more details about surface preparation, please refer to our technical section "Guide to Painting" or refer to our technical personal for your assistance.

INDUSTRIAL & PROTECTIVE COATINGS

Steel Surfaces	General Purposed (Alkyd)	1.21 (or) 1.22 (or) 1.24	1 coat	3.21	1 coat	A9-000 Series (3.31) Koskyd M.I.O	1-2 coats
	Quick Drying (Modified Alkyd)	FDP-001 (or) FDP-002	1 coat	N.R	-	Kosrapid Finish FD (or) EFD-Series	2 coats
	Baking Enamel (Alkyd or Acrylic)	N.R	- (or) 1 coat	N.R	-	Kosbaking S (or) SLB-Series (or) Kosacrylic AUF-Series	1 coat
	Epoxy /2k P.U	1.16 (or) 4.66	1 coat	1.99 (or) 4.66	1 coat	4.60 (or) 3.43	1-2 coats
	High Heat Resistant (Synthetic Resin)	N.R	-	N.R	-	5.11	1-2 coats
Galvanise d/Non-ferous Metal Surfaces	High Heat Resistant (Silicon)	N.R (or) 1.52	- (or) 1 coat	N.R	-	5.12 (or) 5.16	1-2 coats
	2pack (or) Single Pack PVB/Alkyd	1.00 (or) 1.02 (or) 1.657	1 coat	3.21	1 coat	A9-000 Series (3.31)	1-2 coats
Timber Surfaces	Universal Epoxy/2k Polyurethane			1.99 (or) 4.66	1 coat	4.60 (or) 3.43	
	Air Dry Alkyd	N.R	-	3.21	1 coat	A9-000 Series (3.31) (or) 3.81	2 coats
	Chlorinated Rubber	N.R	-	N.R	-	2.45	2 coats
	Epoxy/2k P.U	1.99	1-2 coats	N.R	-	3.43	2 coats
FLOOR COATINGS							
Interior Cement/Tile Floor (Low Moisture)	Epoxy / Epoxy	Kosflor S/B466	1 coat	N.R	-	Kosflor FC-460 (or) FC-462	2 coats
Interior Cement Floor (High Moisture)	Waterbased Epoxy	-	-	N.R	-	Kosflor FC-260	2-3 coats
Exterior Cement Floor (Low Moisture)	Epoxy/2k P.U	Kosflor S/B466	1 coat	N.R	-	Kosflor FC- 343	2 coats
Interior Heavy Duty Clean Room	Epoxy / Epoxy	Kosflor S/B466	1 coat	N.R	-	Kosflor SL-200	1 - 3mm Thickness
Interior Heavy Duty Floor	Epoxy / Epoxy	Kosflor S/B466	1 coat	Epoxy Motar	5-10 mm	Scratch Coat + Kosflor SL-200	1 - 3mm Thickness

* N.R = Not Required

KOSSAN EPOXY FLOOR COATINGS

VENUS
EPF-002

MISTRAL
EPF-490

DAWN GREY
EPF-693

IVORY
EPF-831



SEAGREEN
EPF-019

RUSTIC
EPF-332

JADE GREEN
EPF-048

SIGNAL GREEN
EPF-178

KOSFLOR - A COMPLETE FLOOR PROTECTION SYSTEM

EPOXY FLOOR PRIMER

KOSFLOR SB-360
KOSFLOR SB-466

SOLVENT BASED EPOXY

KOSFLOR FC-181
KOSFLOR FC-460
KOSFLOR FC-462
KOSFLOR FC-343

WATER BASED EPOXY

KOSFLOR FC-260

SELF-LEVELING EPOXY

KOSFLOR SL-200
KOSFLOR SL-600

EPOXY MOTAR

KOSPOBED KPB-500



* SPECIAL COLOUR AVAILABLE UPON REQUEST

* 还有多种特别的颜色以供顾客要求。



www.kossanpaint.com

KOSSAN

PAINT

**KOSSAN PAINT (M) SDN BHD
(Central Branch)**

1, Jalan Koporat 1/KU 9,
Taman Perindustrian Meru,
42200 Kapar, Selangor Darul Ehsan, Malaysia
Tel: 03-3392 2799 03-3392 4296 / 97 / 99 / 4307
Fax: 03-3392 3799
E-mail: sales@kop.com.my

**KOSSAN PAINT (M) SDN BHD
(Sandakan Branch)**

Ground Floor, Block N,
Lot 9B, Bandar Ramai-Ramai,
P.O. Box 317, 90007 Sandakan, Sabah.
Tel: 089-272 417
Fax: 089-272 451

**KOSSAN PAINT (M) SDN BHD
(Kota Kinabalu Branch)**

Ground Floor, Lot No. 11, Block B,
Hiong Tiong, Industrial Centre,
Lorong Buah Salak,
KM11.2, Jalan Tuaran, Inanam,
88450 Kota Kinabalu, Sabah.
Tel: 088-383 457
Fax: 088-382 457

**KOSSAN PAINT (M) SDN BHD
(Sibu Branch)**

No.4, Jalan Maludan Utara,
96000 Sibu, Sarawak.
Tel: 084-216 291
Fax: 084-215 101