

PERSONNEL LOCKOUT TAGOUT

SAFE-D-LOCK



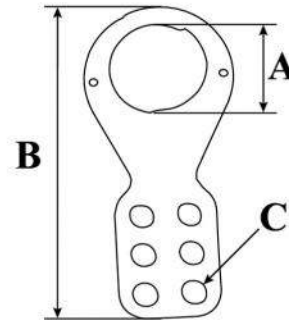
VH -39

VH -25

MODEL	A	B	C
VH-25	25mm	113mm	10mm
VH-39	39mm	127mm	10mm

VINYL COATED HASP

- Die cut section made from solid Heavy gauge steel plate.
- Vinyl coated at the lower portion.
- Inner dia size : 25 mm and 39mm.
- Each hasp accommodates up to six locks.



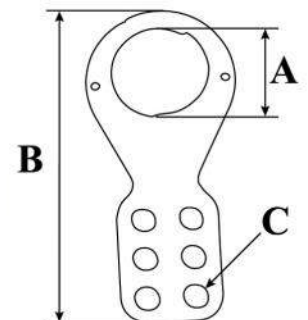
VH -E39

VH -E25

ELECTRODE PLATED HASP

- Die cut section made from solid Heavy gauge steel plate.
- Joined with Chrome plated aluminium rivet.
- Electroplated body.
- Inner dia size : 25 mm and 39mm.
- Each hasp accommodates up to six locks .

MODEL	A	B	C
VH-E25	25mm	112mm	11mm
VH-E39	39mm	127mm	11mm



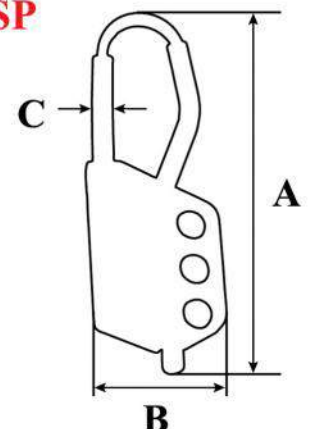
VH- N33

VH-N36

NON-CONDUCTIVE NYLON HASP

- Injection molded one piece construction.
- Made from Nylon material.
- Can be applied to any instrument for locking out.
- Each hasp accommodates up to three locks.

MODEL	A	B	C
VH-N33	110mm	40mm	3mm
VH-N36	114mm	40mm	6mm

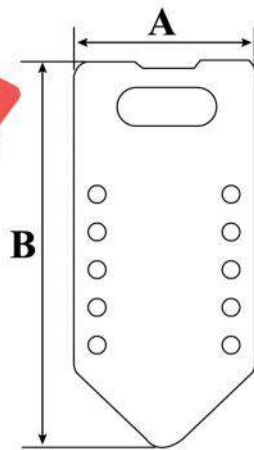


PERSONNEL LOCKOUT TAGOUT

SAFE-D-LOCK



VH-AL10



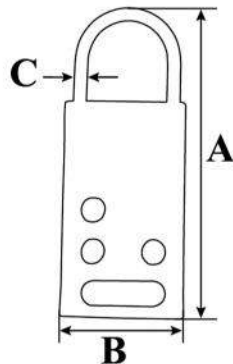
ALUMINIUM LABELING HASP

- Powder coated aluminium HASP.
- Combines lockout and tagout identification.
- Write on safety label.
- Accommodates up to ten padlocks.
- Dimension : 190mm H X 77mm W.

MODEL	A	B
VH-AL10	77mm	190mm



VH-SSH



STAINLESS STEEL HASP

- Material : Stainless Steel.
- Corrosion resistant.
- Holds up to 6 locks.

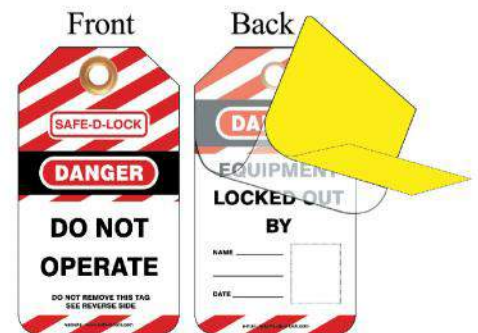
MODEL	A	B	C
VH-SSH	112mm	45mm	5mm



V-T01

LOCKOUT TAGS

- Made from superior grade 0.7mm Polyurethane super white sheet.
- Supplied with golden ring for extra strength for holding padlock.
- Tags meets OSHA standards.
- They withstand moisture / grease & dirt.
- Size : 80mm x 140mm with chamfered top corners.



V-T02

PERSONNEL LOCKOUT TAGOUT

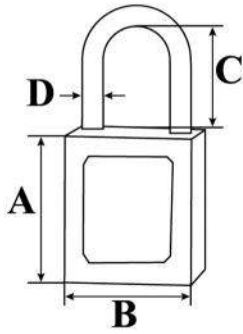
SAFE-D-LOCK



V-PLK-D



V-PLK-M



SAFETY LOCKOUT PADLOCK

- Compliance with OSHA "one employee, one lock, one key" directive.
- Lightweight Special Re-enforced fiber bodies are durable and non-conductive.
- Customize your system with choice of five bright colors.
- Extra clearance steel shackle fits a wide range of lockout applications.
- Ball-bearing locking resists prying.
- Durable, lightweight, non-conductive fiber reinforced lock body permanent write-on labels.
- Key retaining-ensures that padlock is not left unlocked.

MODEL	DESCRIPTION	A	B	C	D
V-PLK-D	Key Different	45mm	38mm	40mm	6mm
V-PLK-M	Master Key	45mm	38mm	40mm	6mm



V- NPL-KD

NON-CONDUCTIVE LOCKOUT PADLOCK

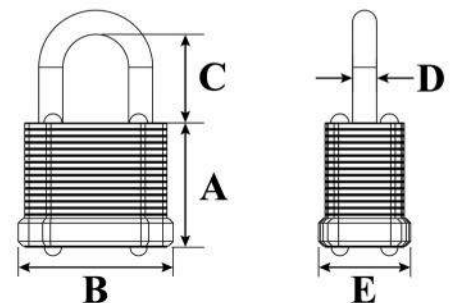
- Manufactured from non-conductive material plastic and brass.
- Ideal for electrical panel, medical, mining, food and beverage lockout.
- Non-sparking, non-conductive and corrosion resistant.
- Key retaining ensure that padlock is not left unlocked.



V-PRS-3A

STEEL LAMINATED PADLOCK

- Maximum security laminated padlocks are made for tough lockout situation.
- Shackle is made of a special metal alloy for increased durability against cutting, prying and twisting.
- 5-pin tumbler cylinders for additional keying options.
- Padlocks are individually plated for improved corrosion resistance within the lock.
- Set with 3nos with same key.

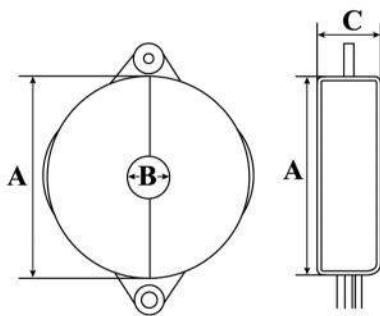


MODEL	A	B	C	D	E
V-PRS-3A	33mm	43mm	47mm	6mm	25mm

GATE VALVE LOCKOUT



- Virtually indestructible valve covers.
- Once locked, they rotate freely around the hand wheel & prevent the valve wheel from being turned.
- The strong polyurethane plastics make them resistant to cracking and abrasion .
- They are resistant to extreme weather and temperature conditions.
- Available in 5 sizes (Red color) Other colors are available on request - minimum quantity applicable.



MODEL	HAND WHEEL DIA	A	B	C
V-02-GVL	1"-2½"(25 to 63.5mm)	77mm	19mm	38mm
V-04-GVL	2½"-5"(63.5 to 127mm)	142mm	38mm	43mm
V-06-GVL	5"-6½"(127 to 165mm)	175mm	63mm	50mm
V-08-GVL	6½"-10"(165 to 254mm)	265mm	87mm	63mm
V-10-GVL	10"-13"(254 to 355mm)	368mm	102mm	75mm

ADJUSTABLE GATE VALVE LOCKOUT



- This versatile valve hand wheel lockout adjusts to fit valve hand wheels from 25.4mm to 165mm (1" to 6.1/2") diameter.
- Manufactured from durable polypropylene and can withstand temperature changes from -45 °C to 182 °C.

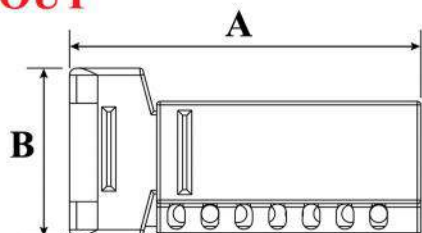
MECHANICAL LOCKOUT

SAFE-D-LOCK

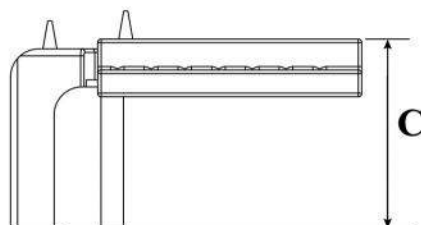
BALL VALVE LOCKOUT



V- BLV-01



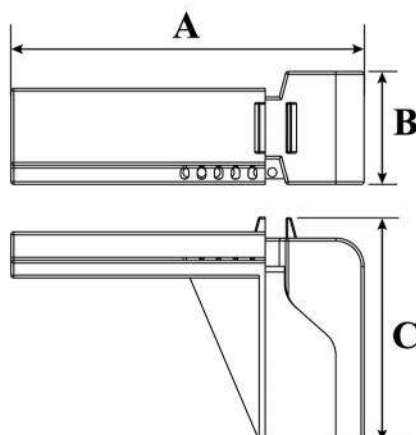
V-BLV-02



- Made from Special grade of PVC.
- Virtually indestructible valve covers.
- Once locked, it prevents valve handle from being turned.
- Resistant to cracking and abrasion .
- They are resistant to extreme weather and temperature conditions.
- Available in 3 sizes.



V-BLV-03



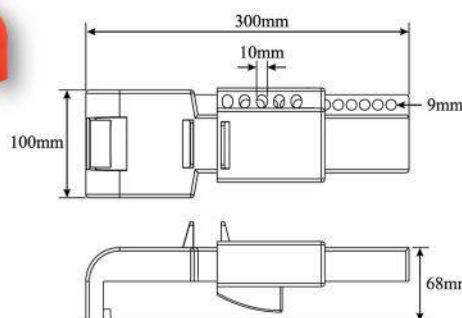
MODEL	BALL VALVE DIA	A	B	C
V-BLV 01	3/8" - 1 1/4"	165mm	78mm	85mm
V-BLV 02	1 1/2" - 2 1/2"	208mm	78mm	130mm
V-BLV 03	2" - 8"	302mm	100mm	200mm

BUTTERFLY VALVE LOCKOUT

- For all types of butterfly valves available internationally.
- The strong polyurethane plastics make them resistant to cracking and abrasion.
- They are resistant to extreme weather and temperature conditions.



V-BFV



UNIVERSAL VALVE LOCKOUT



V-UVL

- The Universal Lockout device is a modular system which enables you to lock out valves of different types and sizes.
- No other device offers such flexibility and security.



HANDY CABLE LOCKOUT



V-CL6

- Made of impact modified nylon
- Comes with 6 feet plastic coated steel cable
- Can be used in variety of applications



MULTIPURPOSE CABLE LOCKOUT



V-UML

- Ideal for multiple control panel and gate valve lockouts.
- Scientifically made moulded section of PVC.
- 2 meters galvanized steel cable, withstand more than 100 Kg weight.
- Accommodates up to 4 locks.



MINIATURE CIRCUIT BREAKER LOCKOUT



PIN CBL SET (3 Different types)



PIN OUT CBL - (3pcs)



PIN IN CBL - (3pcs)



PIN OUT WIDE CBL - (3pcs)

- Safe & effective method for locking out Miniature Circuit Breaker lockout.
- Push button installation - Does not require any tool for installation.
- Can be applied on all single / Multiple Breakers.
- A Padlock should be applied to Lockout the MCB.

UNIVERSAL CIRCUIT BREAKER LOCKOUT



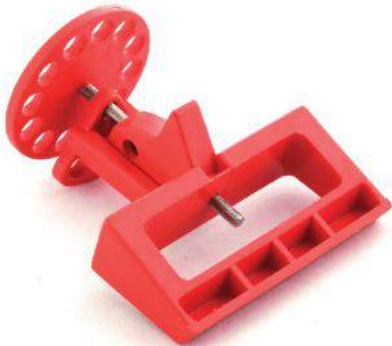
V-UBL-SN

V-UBL-SA

- Safe & effective method for locking out Circuit Breakers.
- With Adjustable Screw.
- It can be used on single & multi - pole breakers.
- Handle size from 7.5mm to 15mm tall and 4mm to 8.9mm thick.



LARGE CIRCUIT BREAKER LOCKOUT

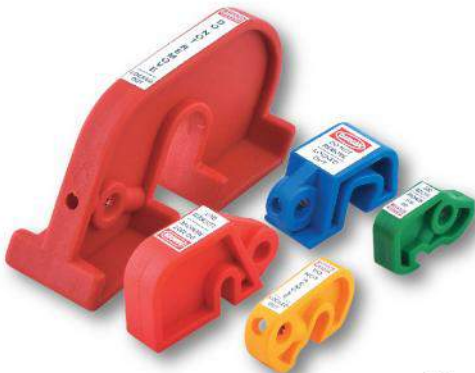


V-LB12

- Locks out a wide range of three phase Circuit Breakers (227 V & above).
- Fits on lever of Circuit Breaker up to 3" wide & 0.9" thick.
- Handy Device : make it easy to secure the large Circuit Breakers at any workplace.
- Rugged Stainless steel / PVC Constructions.
- Corrosion resistant.



COMBO CIRCUIT BREAKER & FUSE LOCKOUT



V - CBF-COMBO 5

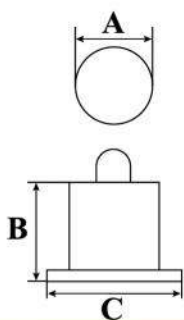
- Five type of lockouts for different types of Circuit Breakers and Fuse Holder.
- Application: Clamp onto the Circuit Breaker toggle in the OFF position, using a small screwdriver and the set screw in the device.
- Place a padlock through the hole to prevent access to the set screw.



ELECTRICAL LOCKOUT

SAFE-D-LOCK

ELECTRICAL SWITCHES LOCKOUT



V-CIR-55



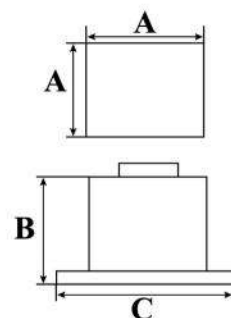
V-CIR-45



V-SQB



V-SQS



Electrical switches lockout are designed to fix over most of the universal type of push buttons and switches. Each unit has been developed to completely enclose electrical buttons / switches to prevent machine from being energized.



MODEL	DESCRIPTION	A	B	C
V-CIR-45	ROUND	45	47	50
V-CIR-55	ROUND	55	48	60
V-SQS	SQUARE	60	65	72
V-SQB	SQUARE	85	65	95

PIN & SLEEVE CONNECTOR LOCKOUT



V- RS14 ($\varnothing 56$, $\varnothing 63$ and $\varnothing 68$ mm)

- Ideal for locking out Pin and Sleeve surface or trailing sockets
- Available in 3 different sizes dia. 56, 63 and 68mm for 16Amp to 63 Amp socket.
- Made from durable polypropylene.
- Prevent for unexpected start-up of equipment during maintenance and repair work.

V- RP15

- Can be applied for all types & sizes of pin and sleeve plugs.

MUSHROOM BUTTON LOCKOUT

- Safe & effective method locking out emergency stop type mushroom buttons of normal sizes.
- Made from polyvinylchloride substance.
- Lockout label are provided.



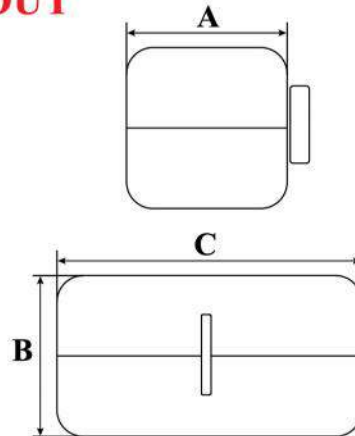
V-MPB



ELECTRICAL LOCKOUT

SAFE-D-LOCK

PLUG / PNEUMATIC LOCKOUT



- The injection molded superior grade PVC lockout specifically meant to hold inside all kind of sockets that are attached to the cords of various thickness.
- Use with any padlock to keep equipment from being plugged in accidentally.
- Ensure that the plug can't be used until the lock is removed.

MODEL	CABLE / HOSE DIA	A	B	C
V-SPL-S	13mm	50mm	52mm	88mm
V-SPL-B	8 - 19mm	92mm	96mm	165mm

ELECTRICAL PLUG LOCKOUT DEVICES

- Yellow color injection molded electrical lockout.
- Use with any padlock to keep equipment from being plugged in accidentally.
- Enclose the plug so that it can't be used.
- Plug Lockout accommodates high and low-voltage plugs up to 3" in diameter and 5 1/2" in length.
- 2 sliding top lids can be used individually or together to fit small, medium and large-diameter cords up to 1 1/4".



V-CPL-E



HOIST CONTROLLER LOCKOUT



V-HPL



- Ideal for large electrical connector and hoist controller lockout.
- Flexible & durable fabric cover.
- Can additional insert PVC tube inside to block access to hoist control button.

LOCKOUT / TAGOUT STEEL STATION



V-LSS16

- Steel with yellow powder coated.
- 2 adjustable shelves.
- Clear fascia.
- Supplied with 5pcs chrome finish steel hangers.
- Lockable to prevent loss of valuable lockout items.
- Perforated back panel for hanging.
- Dimension : 16"H x 14" W x 6" D.



VISIBLE LOCKOUT STATION



V-LS20



V-LS10

- Supplied with lockable hinged cover to prevent loss of valuable lockout equipments
- Holds up to 10 padlocks (V-LS10) and 20 padlocks (V-LS20)
- With Tags compartment.
- Dimensions : 408mm W x 65mm D x 313mmH (V-LS10)
565mm W x 60mm D x 394mmH (V-LS20)

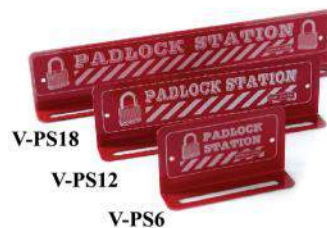
LOCKOUT / TAGOUT PVC STATION



V-LSP-B

- PVC station are designed to keep lockout equipments in a central location making access to isolate equipment easy.
- Durable plastic material.
- Five plastic hanging hooks for padlocks and hasps.
- Wall mounted.
- Dimension: 6" x 8".

MINI PADLOCK STATION



V-PS18

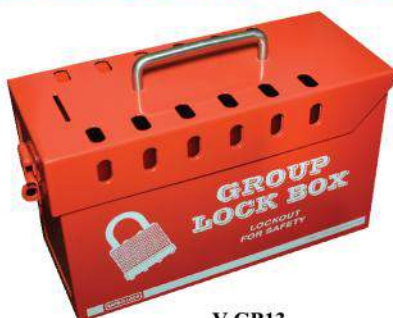
V-PS12

V-PS6



- Heavy gauge steel with metallic powder coated.
- Available for 6, 12 and 18 locks.
- Padlocks not included.

METAL GROUP LOCKOUT BOX



V-GB13

For group lockout situation involving a large number of workers and equipment's, lockout box can simplifies to lockout and ensure maximum security for complex working team.

- Made of special grade metallic sheet. Red powder coated.
- Accommodates up to thirteen padlock.
- Easy handling and carrying.
- Dimension: 154mm x 255mm 105mm