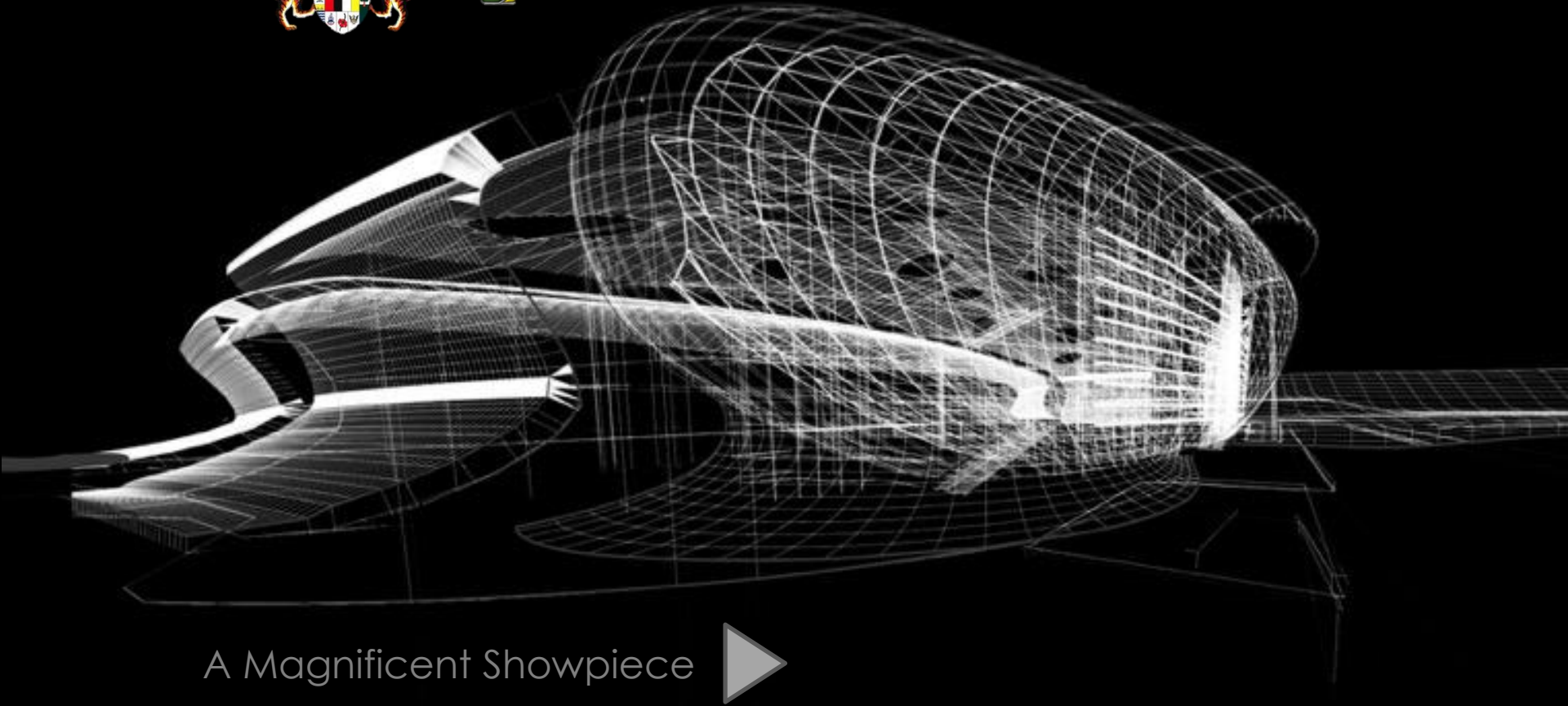




MALAYSIA

INTERNATIONAL TRADE & EXHIBITION CENTRE



A Magnificent Showpiece





**CLIENT :** MINISTRY OF INTERNATIONAL TRADE AND  
INDUSTRY (MITI)

**GOVERNMENT REPRESENTATIVE :** JKR PROJECT MANAGEMENT TEAM

**DEVELOPER :** TTDI KL METROPOLIS SDN.BHD.

**PROJECT MANAGEMENT CONSULTANT :** NRY ARCHITECT SDN.BHD. /  
PM LINK PTE.LTD.

**MAIN CONTRACTOR :** DAEWOO ENGINEERING &  
CONSTRUCTION CO.,LTD



**ARCHITECT :** RSP ARCHITECTS SDN. BHD.

**CIVIL & STRUCTURE :** T.Y.LIN INTERNATIONAL SDN. BHD.

**MECHANICAL & ELECTRICAL :** PERUNDING KOTREK SDN. BHD.

**QUANTITY SURVEYORS :** JUBM SDN. BHD.

**FAÇADE :** PINTARJAYA SDN. BHD.

**INTERIOR DESIGN :** ACID SDN. BHD.

**LANDSCAPE :** IMAGENE DESIGN SDN. BHD.

**ACOUSTIC :** PRAKHUN SDN. BHD.

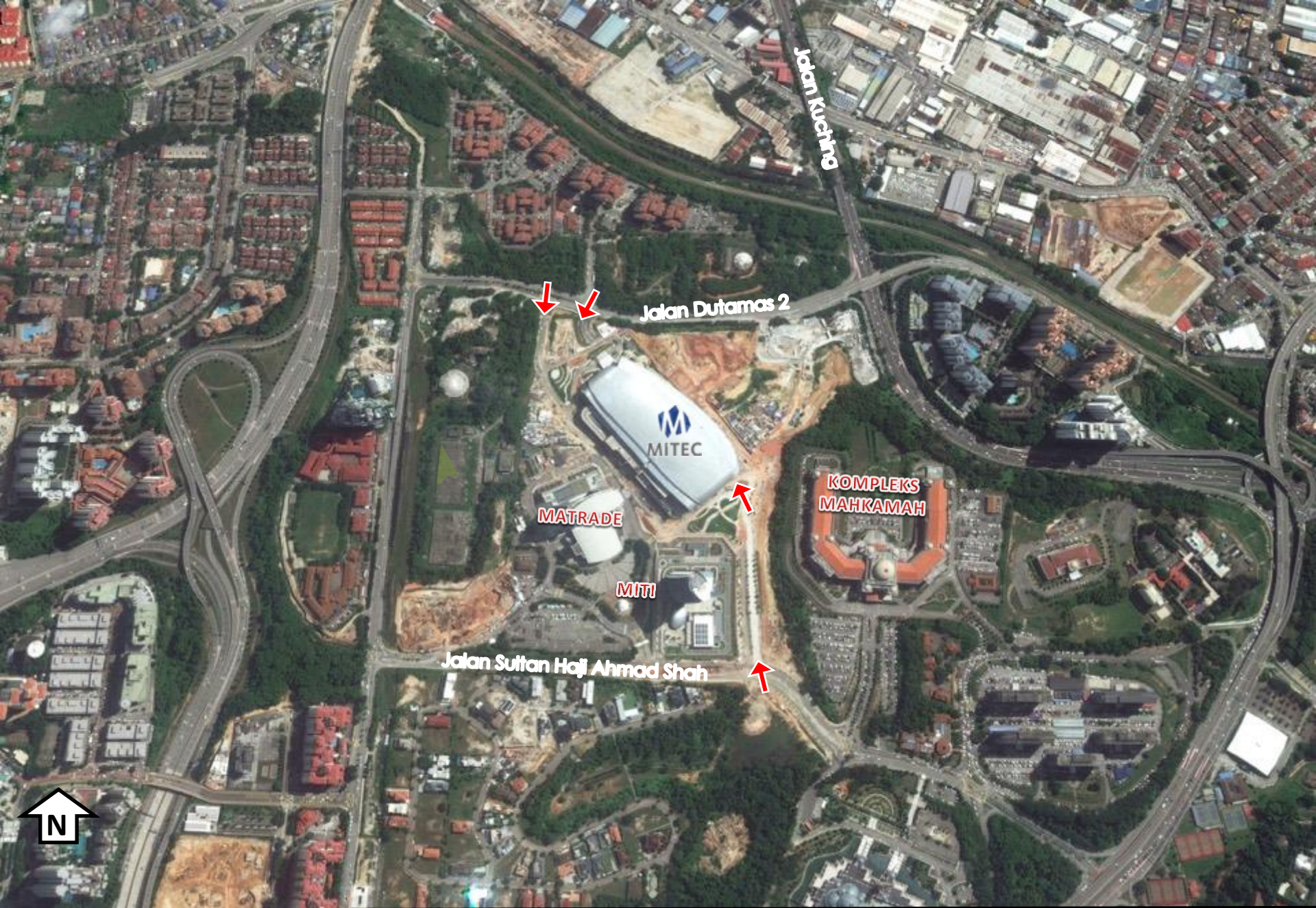
**ICT :** INTER VIRTUAL SDN. BHD.

**WAY FINDING :** REDDISH DESIGN SDN. BHD.

- **Site Area: 13 acres (53 013sq.m)**
- **Gross Floor Area: 1,518,357ft<sup>2</sup> / 141,060 m<sup>2</sup> (inclusive of car park)**
- **Nett Area: 774,129ft<sup>2</sup> / 71,919m<sup>2</sup>**
- **Building Height: 64m (equivalent to 21 storey building)**
- **Building Length: Approximately 300m (from North to South Entrance)**
- **Internal Height at concourse area: 45m to the highest structural point**
- **Total car park on site: 1462 bays**
- **Project Duration: 48 months (Oct. 2012 – Nov. 2016)**







LOCATION





MASTERPLAN

**MITEC**'s design was birthed out of the metaphor of the rubber seed which symbolized the Rubber Industry's contribution to Malaysia's economic growth.

### **PROMISE**

- The seed represents a promising future for the Malaysia's trade industry.

### **DYNAMIC**

- Form reflects the vibrant economic development of the country.

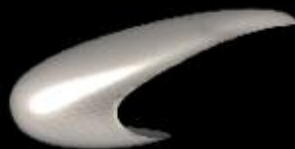
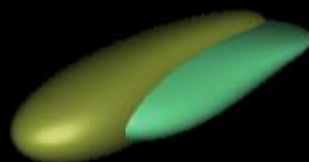
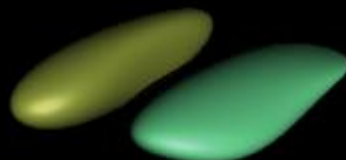
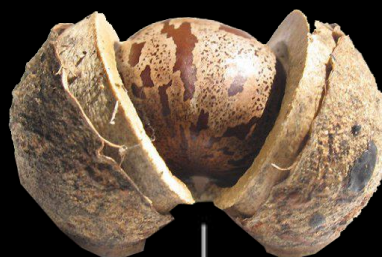
### **CONTINUOUS**

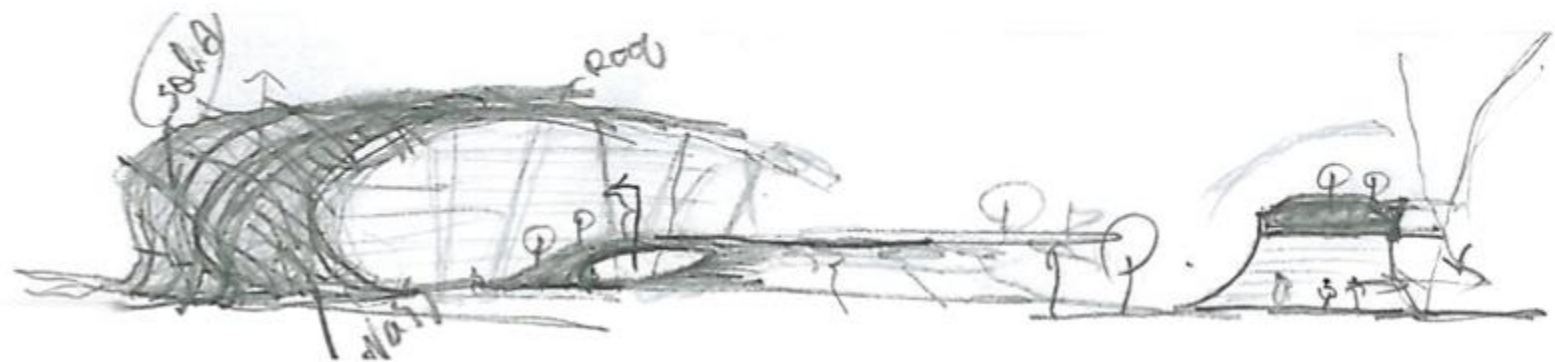
- Seamless design portrays continuity of business relationship with the local and international investors.

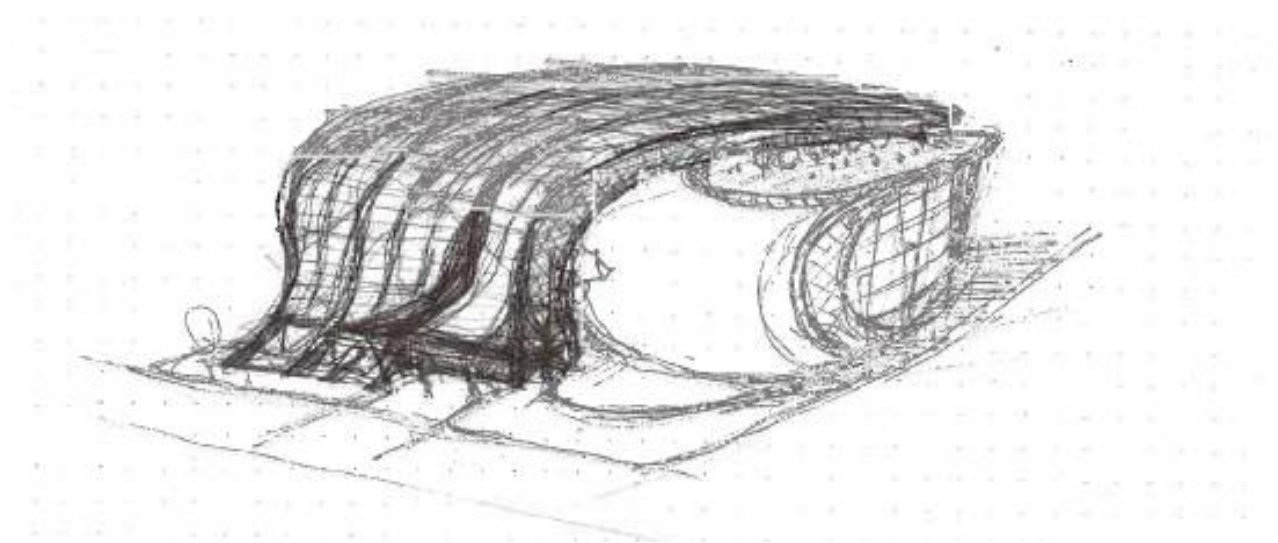


RUBBER SEED

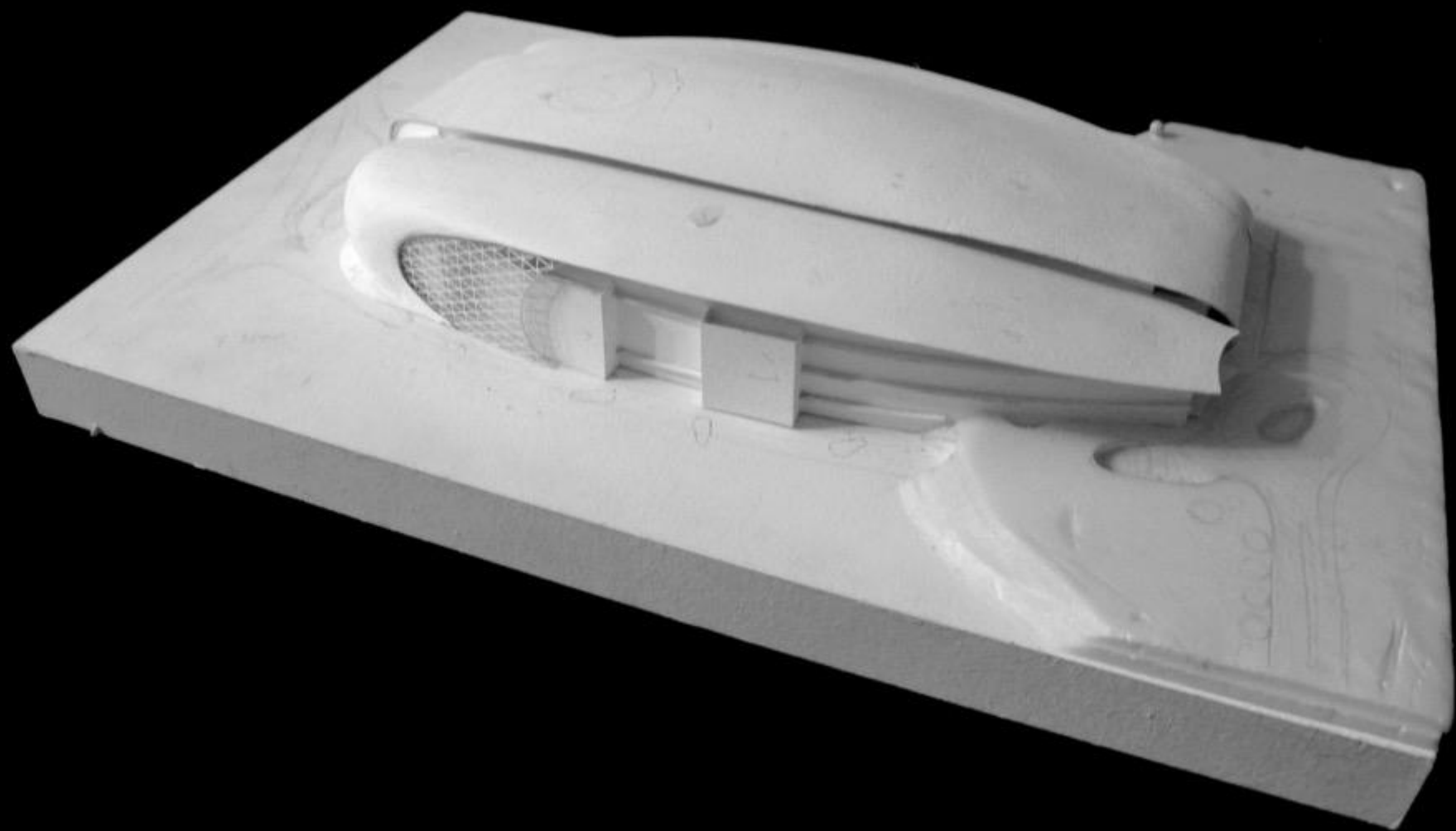
*Hevea Brasiliensis*



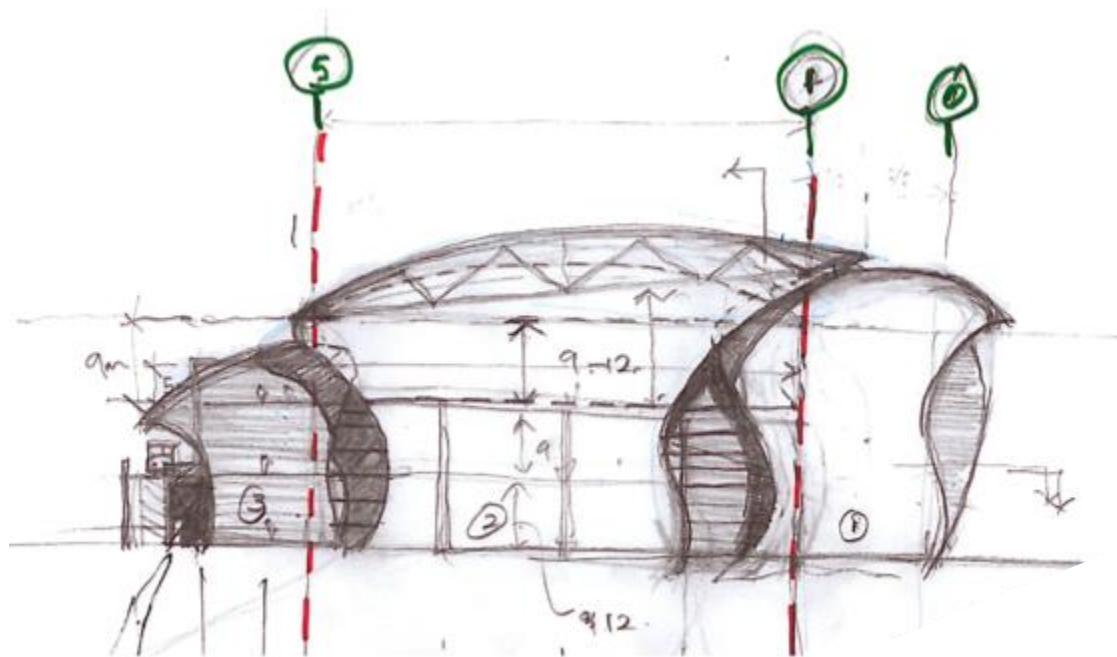












BOH/ SERVICE

EXHIBITION HALL

CONCOURSE

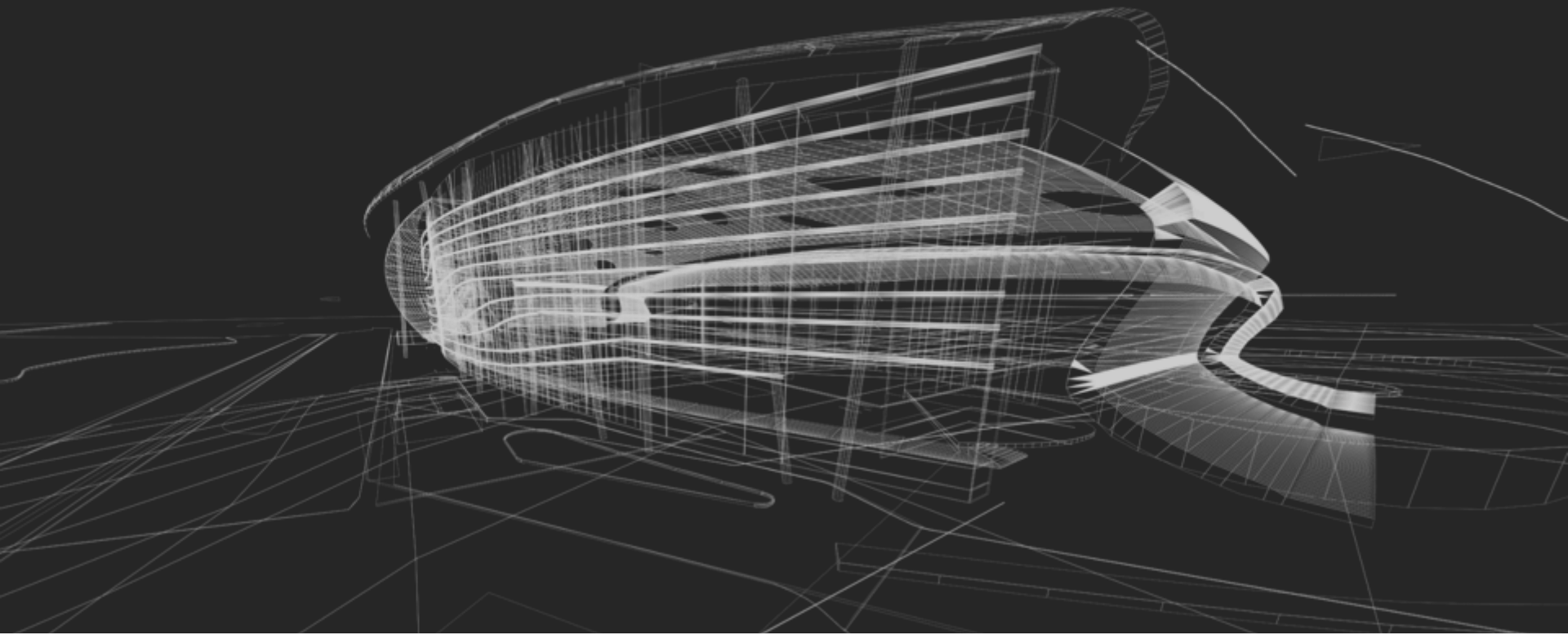


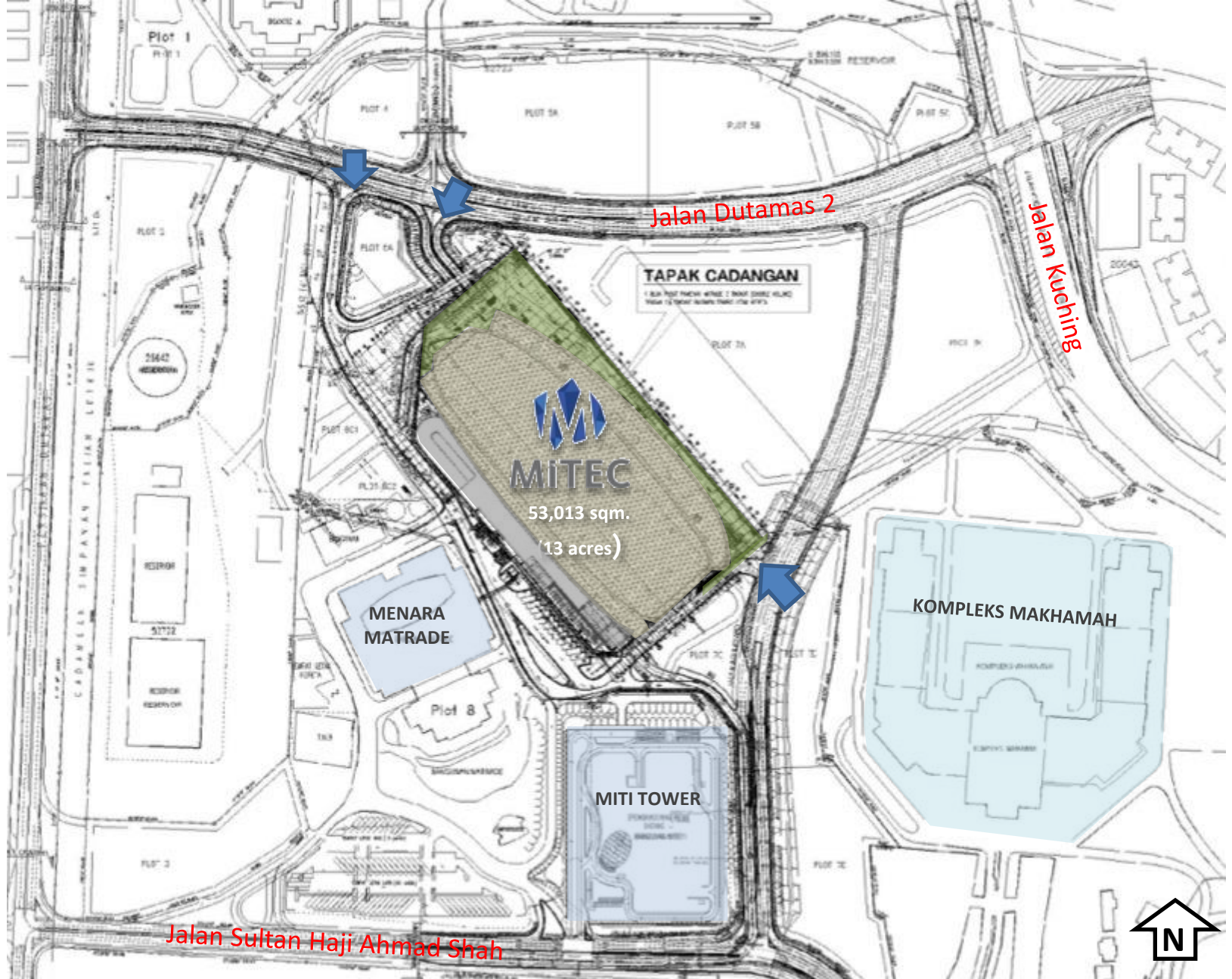
STUDY SECTION  
AT CONCOURSE



MAIN LOBBY  
CONCOURSE

# LAYOUT PLANS



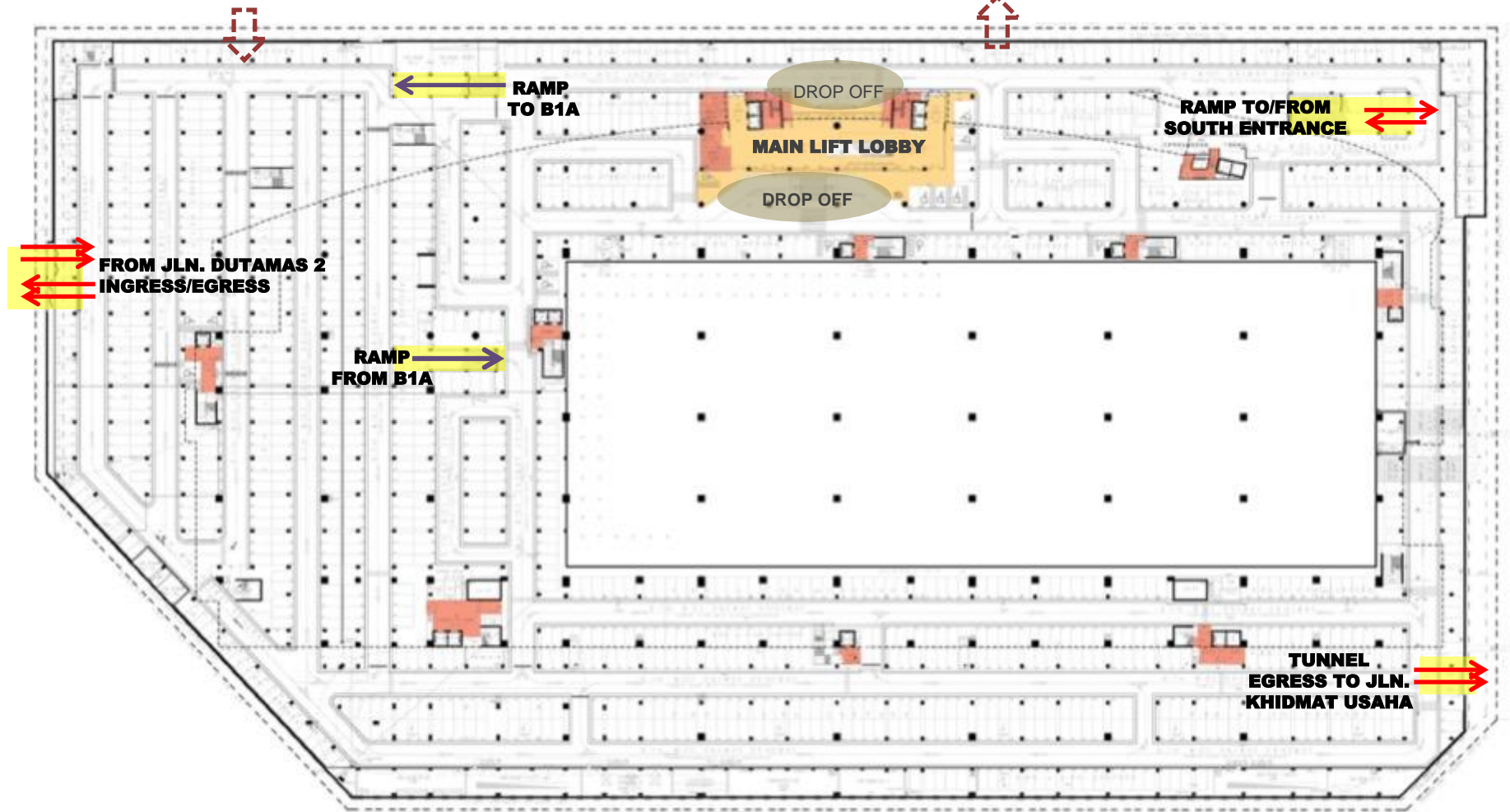


SITE PLAN



FUTURE LINK FROM  
NEARBY DEVELOPMENT

FUTURE LINK TO  
NEARBY DEVELOPMENT

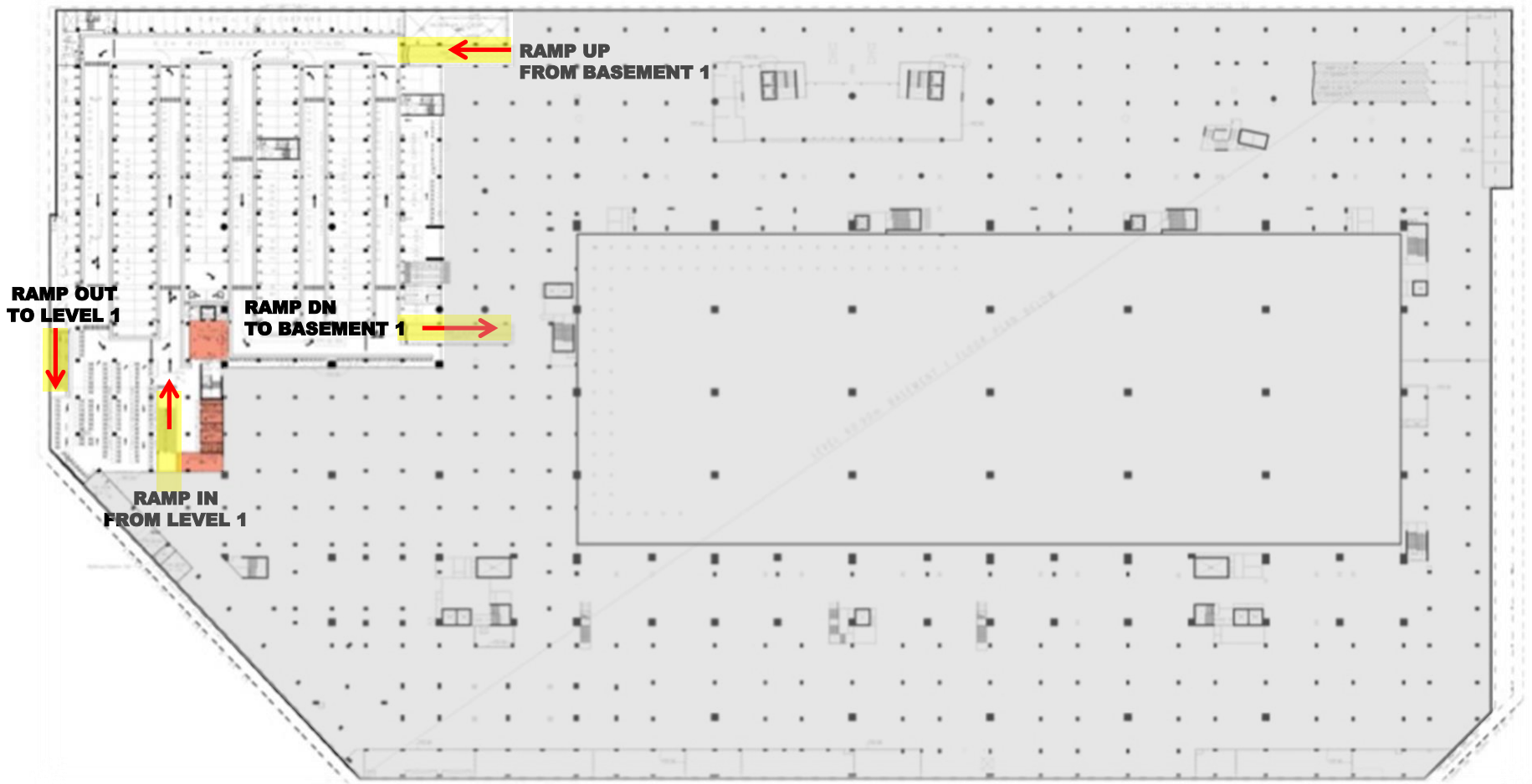


**LEGEND:**

-  **FACILITIES & SERVICES**
-  **LOBBY**

TOTAL CAR PARKS : 1128 BAYS

LEVEL B1

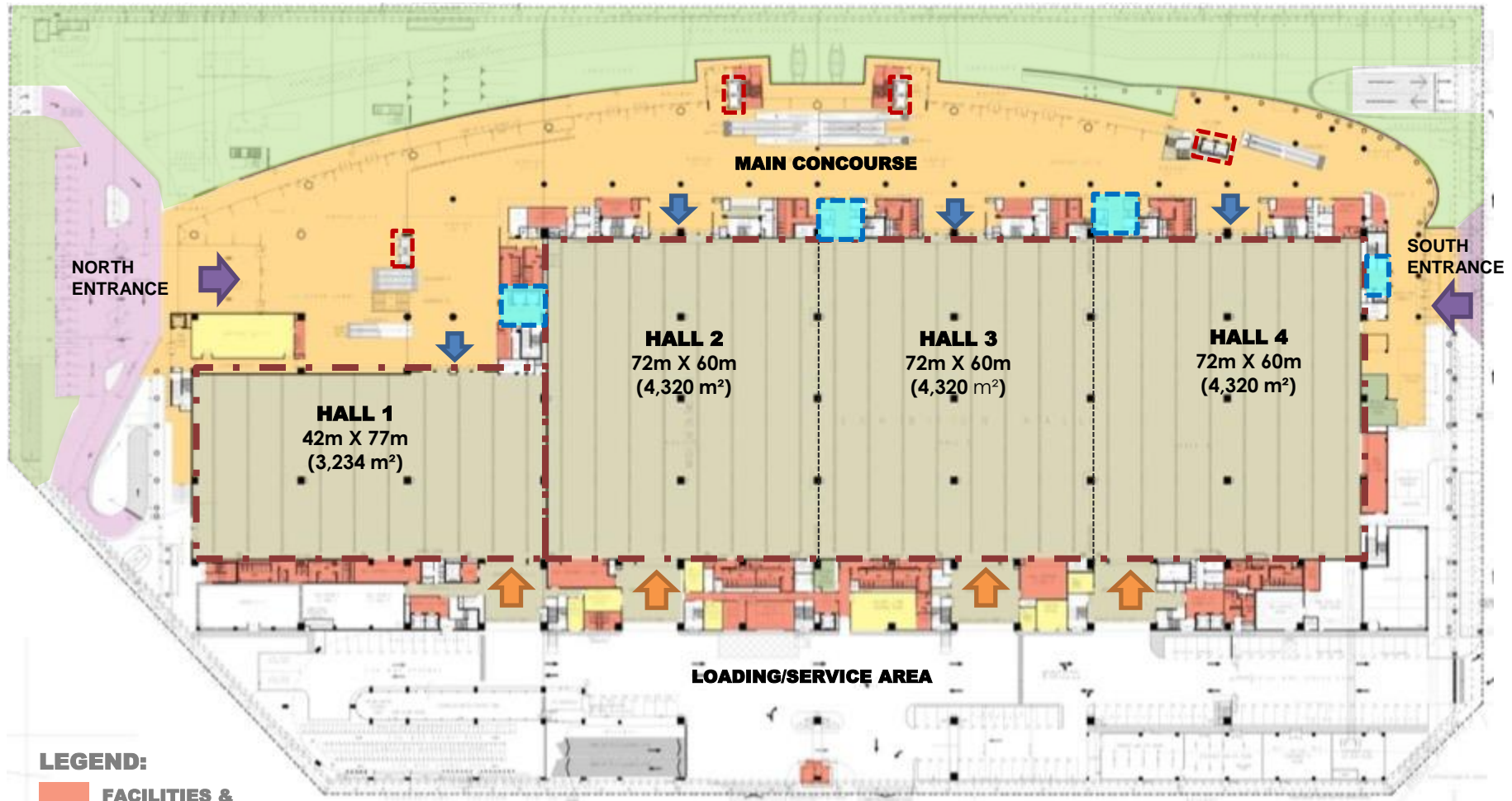


**LEGEND:**

-  **FACILITIES & SERVICES**
-  **LOBBY**

**TOTAL CAR PARKS : 211 BAYS**

**LEVEL B1A**



#### LEGEND:

- FACILITIES & SERVICES**
- OFFICES**
- VIP DROP OFF – NORTH & SOUTH ENTRANCE**
- CONCOURSE / DISPLAY AREA**
- EXHIBITION HALLS**

**TOTAL CAR PARKS : 123 BAYS**

HALL 1	10kN/m <sup>2</sup>	168 booths	6000 pax (free standing)
HALL 2 - 4	50kN/m <sup>2</sup>	238 booths	8000 pax (free standing)

**LEVEL 1**





NORTH DROP-OFF



SOUTH ENTRANCE

**GLASS LIFT TOWER**



NORTH LOBBY

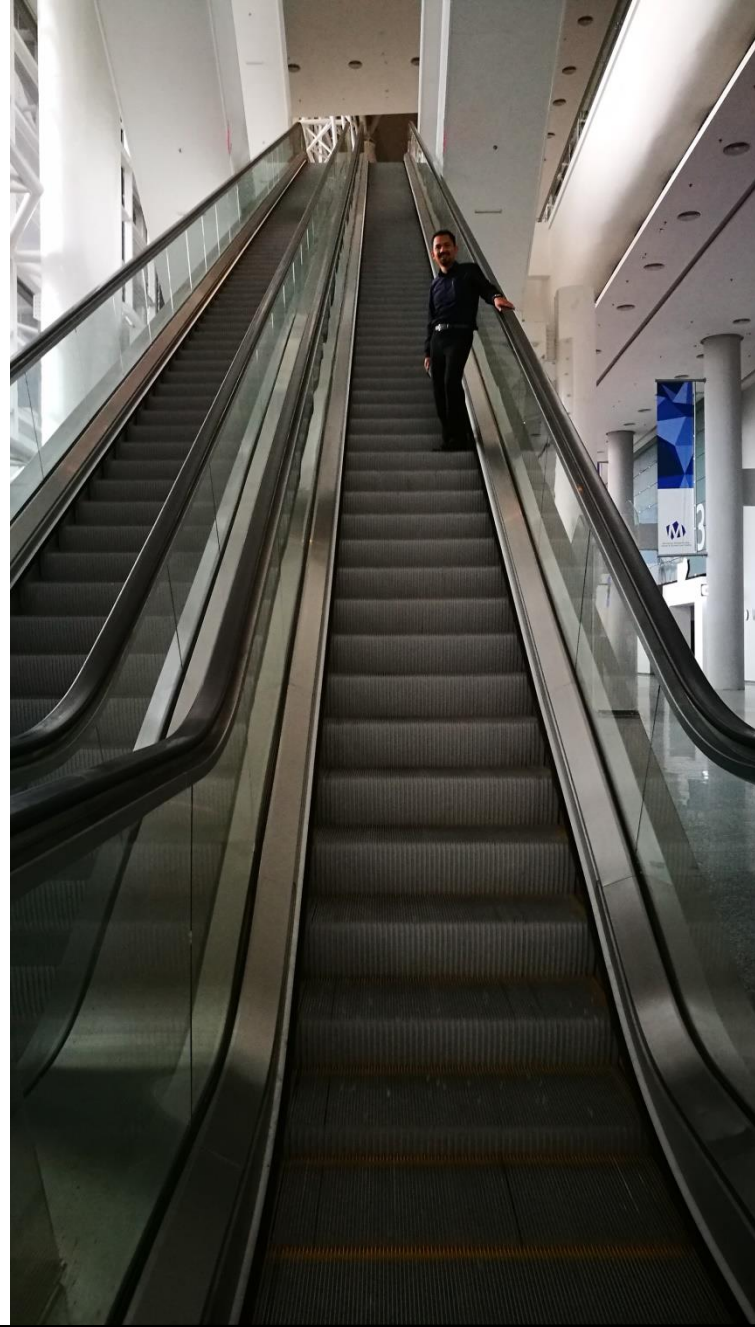




MAIN CONCOURSE

MAIN CONCOURSE

CENTRAL **ESCELATOR**





#### LEGEND:

- FACILITIES & SERVICES**
- PUBLIC / EXHIBITORS AREAS**
- LIFT LOBBIES**

MEDIA CENTRE	3	163.2m <sup>2</sup>	132pax (classroom)
BREAK OUT ROOM	10	38.25m <sup>2</sup>	10pax (classroom)

## MEDIA ROOM



LEVEL 1A

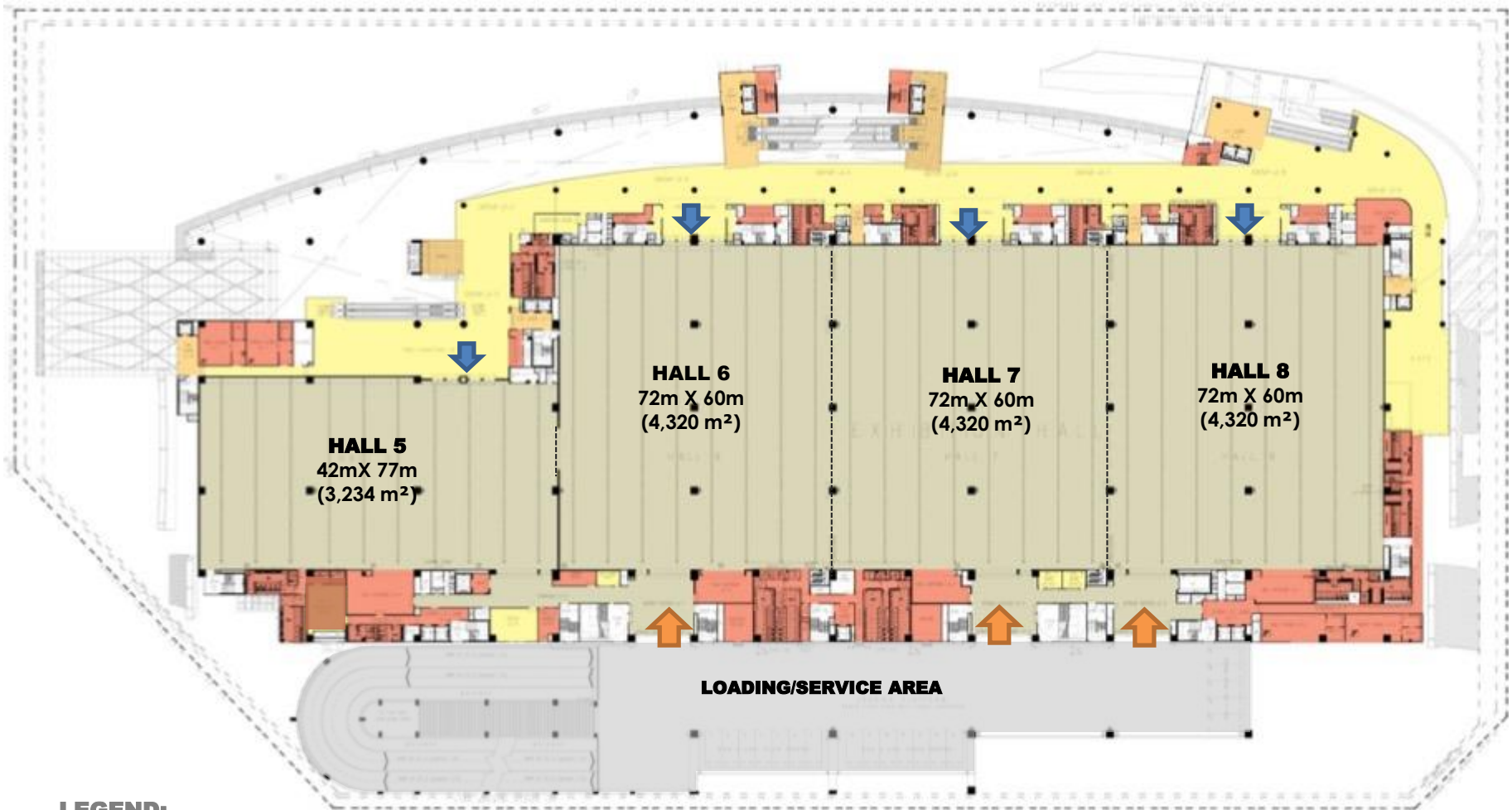




BREAK OUT ROOM

LEVEL 1 A





**LEGEND:**

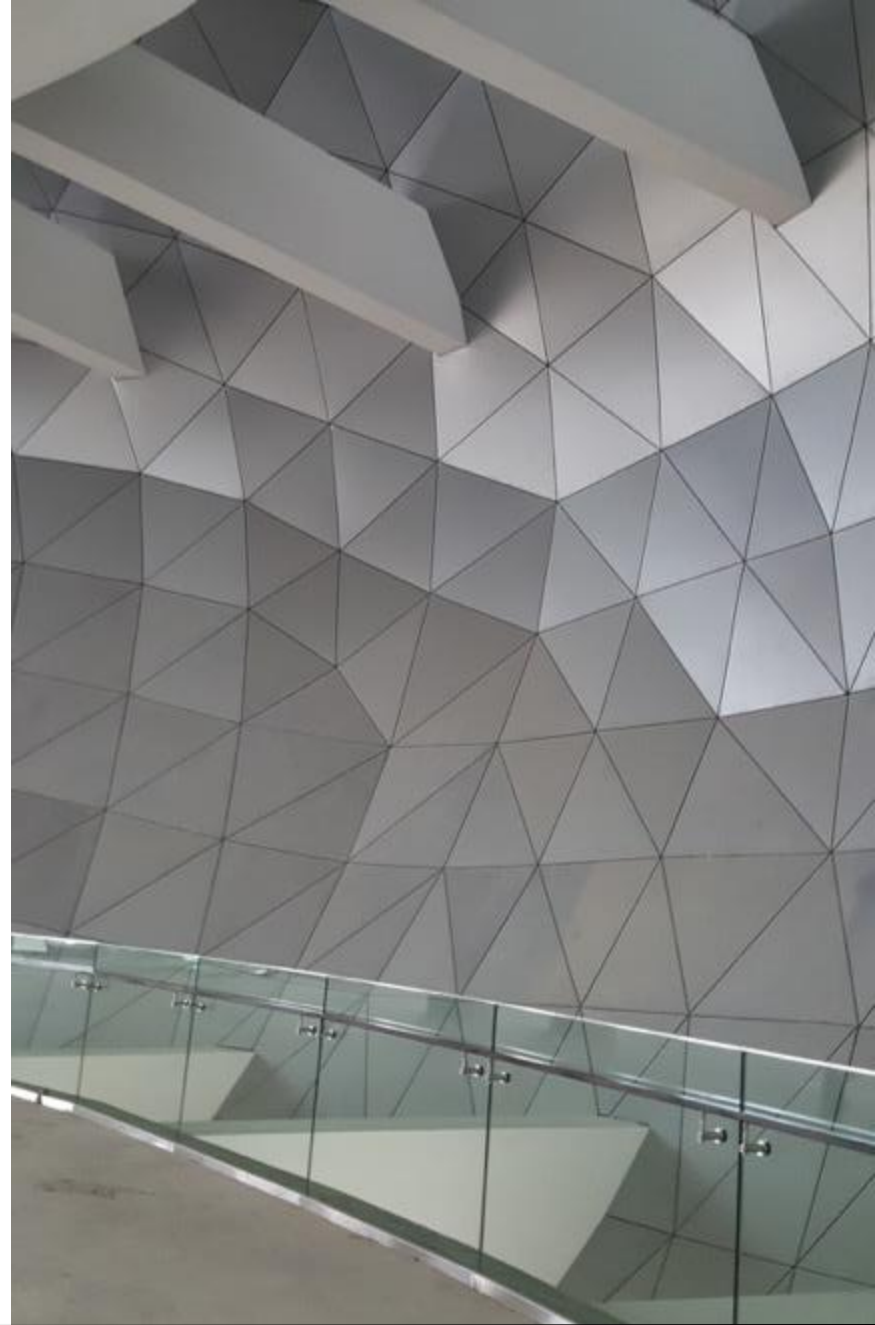
- FACILITIES & SERVICES**
- PUBLIC AREAS**
- LIFT LOBBIES**
- EXHIBITION HALLS**

HALL 5	10kN/m <sup>2</sup>	174 booths	6000 pax (free standing)
HALL 6 - 8	20kN/m <sup>2</sup>	235 booths	8000 pax (free standing)



LEVEL 2

TRIANGULAR **STRETCH MEMBRANE CEILING**



LEVEL 2



**LEGEND:**



**FACILITIES &  
SERVICES**



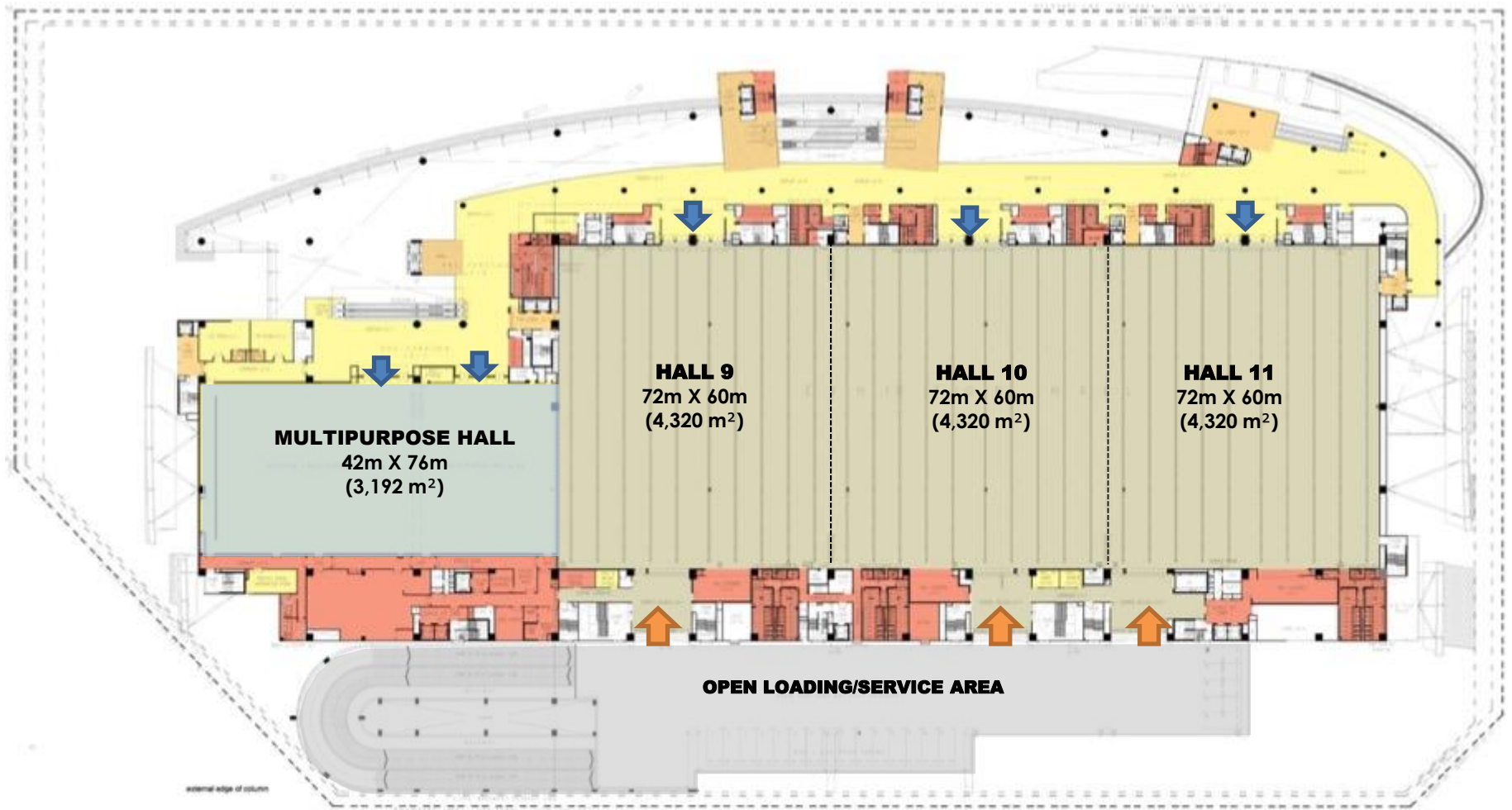
**ORGANIZER'S AREAS**



**LIFT LOBBIES**

LEVEL 2A





#### LEGEND:

- FACILITIES & SERVICES**
- PUBLIC AREAS**
- LIFT LOBBIES**
- EXHIBITION HALLS**

HALL 9 - 11	10kN/m <sup>2</sup>	245 booths	8000 pax (free standing)
MULTI PURPOSE HALL	5kN/m <sup>2</sup>	-	1080 pax (banquet)



TRIANGULAR **MEMBRANE CEILING**



LEVEL 3





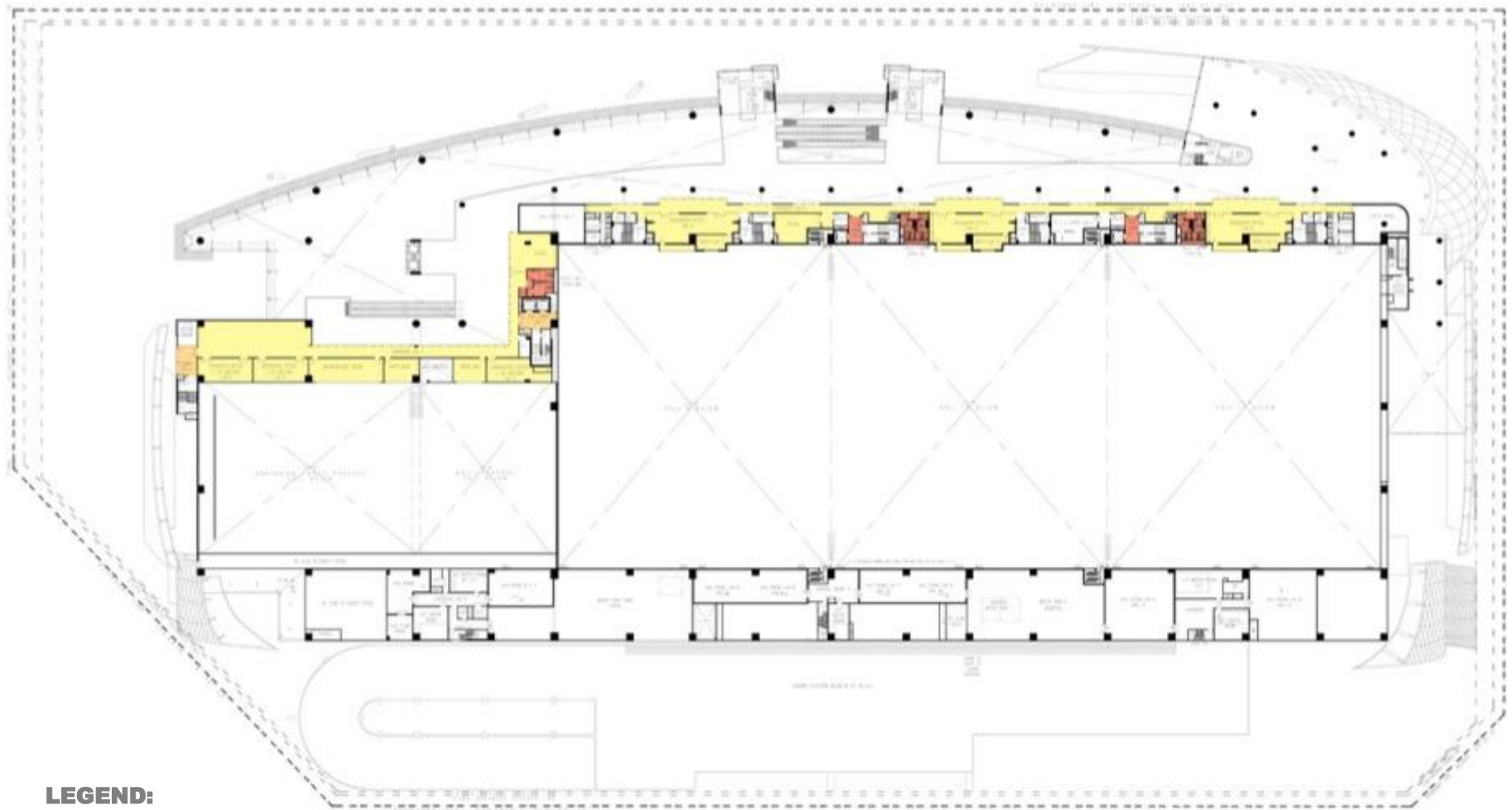
MULTI PURPOSE HALL





LOADING/UNLOADING DECK

LEVEL 3



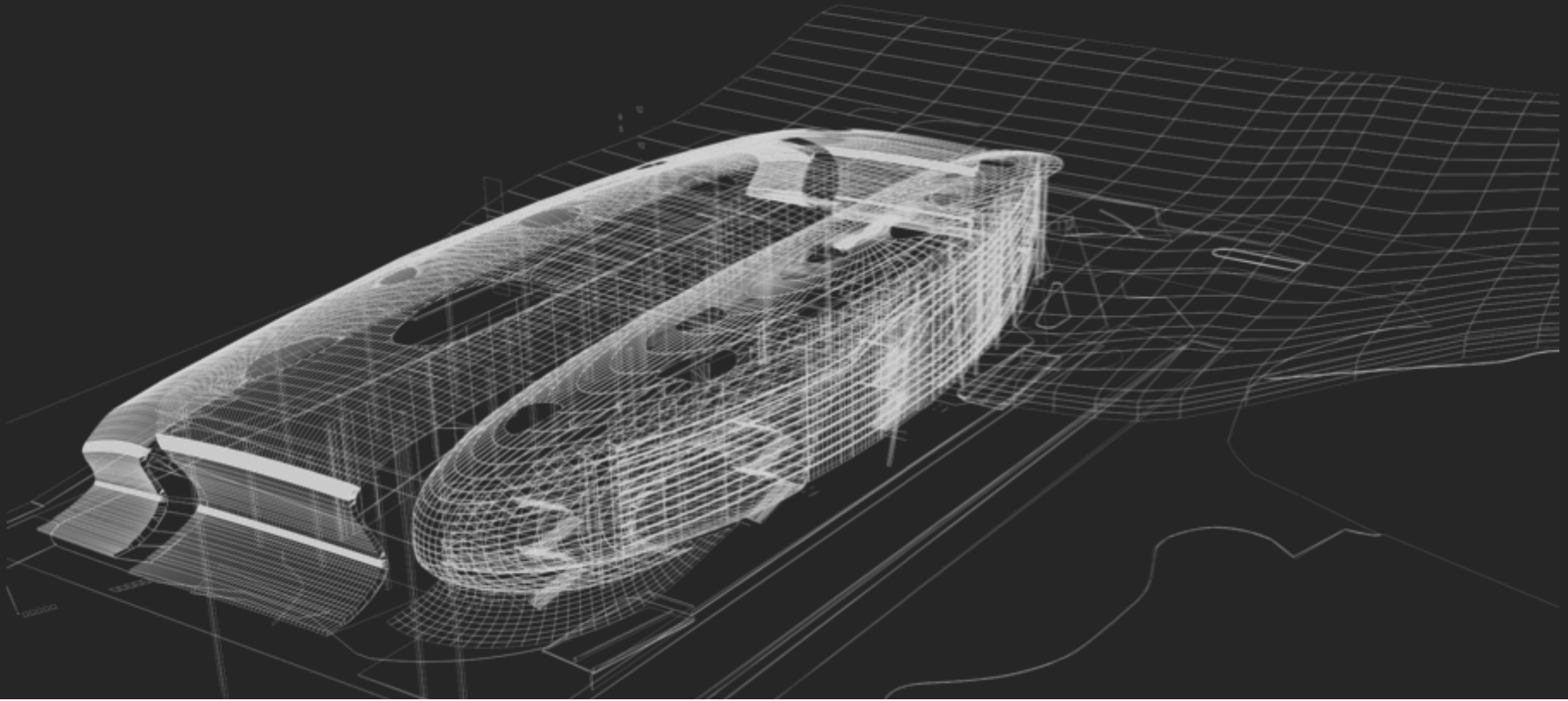
**LEGEND:**

- FACILITIES & SERVICES**
- PUBLIC/ ORGANIZER'S AREAS**
- LIFT LOBBIES**
- EXHIBITION HALLS**

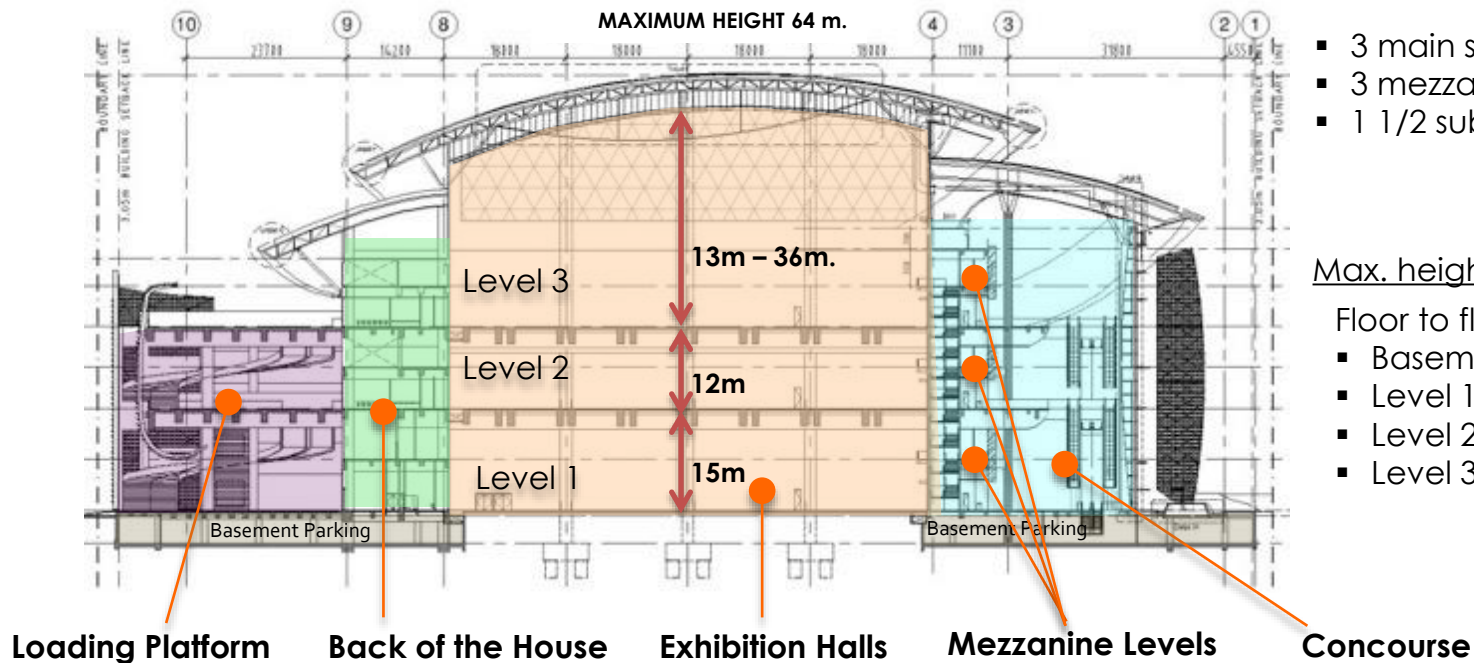
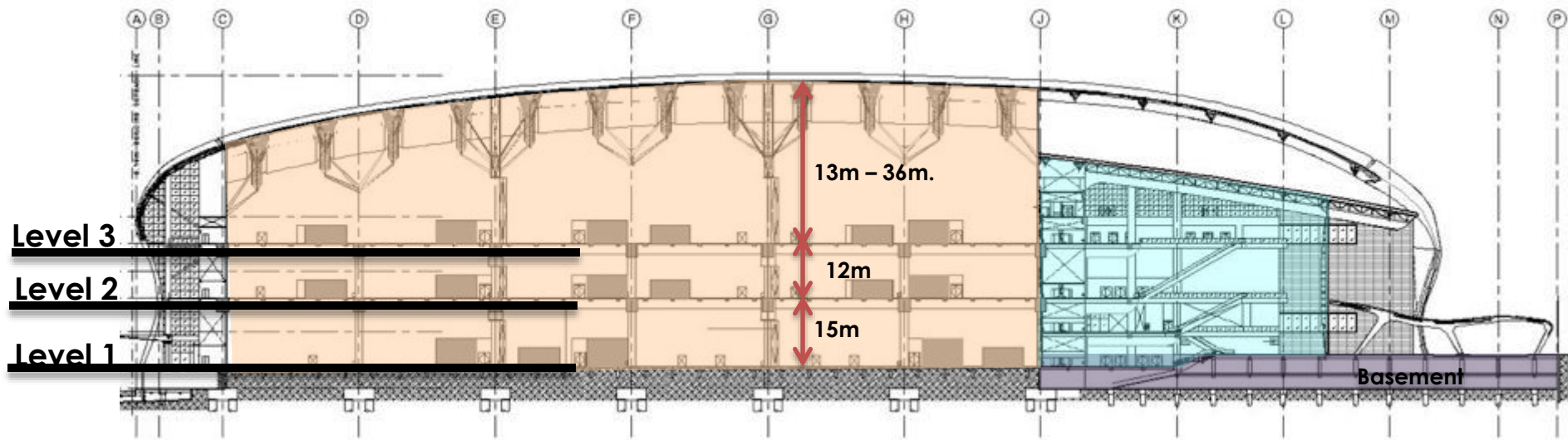
LEVEL 3A



# SECTIONS & ELEVATIONS





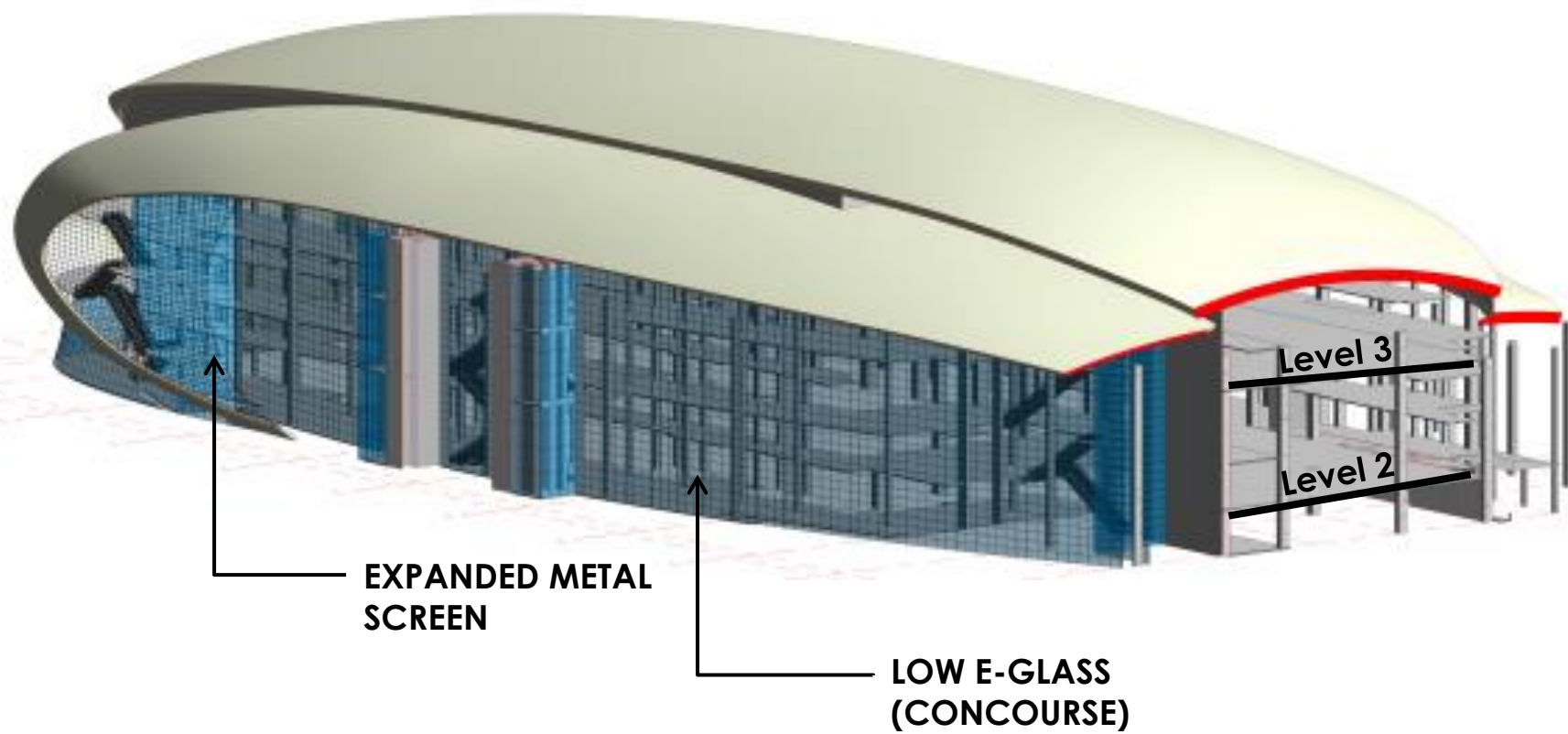


- 3 main superstructure level
- 3 mezzanine levels
- 1 1/2 substructure level

Max. height: 64 meters

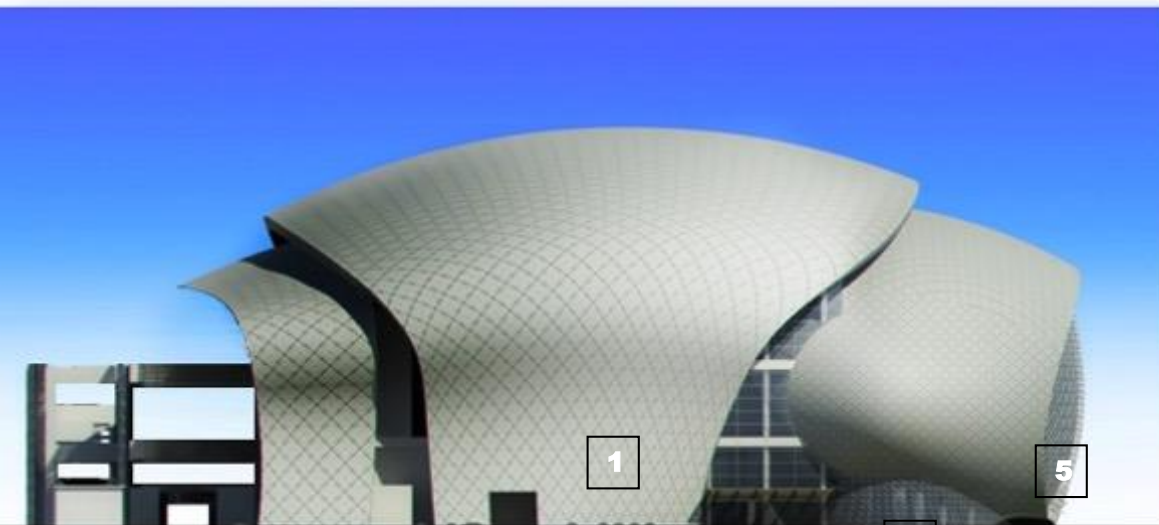
Floor to floor height:

- Basement - 4.95m
- Level 1 - 15m
- Level 2 - 12m
- Level 3 - 36m max





**FRONT ELEVATION**



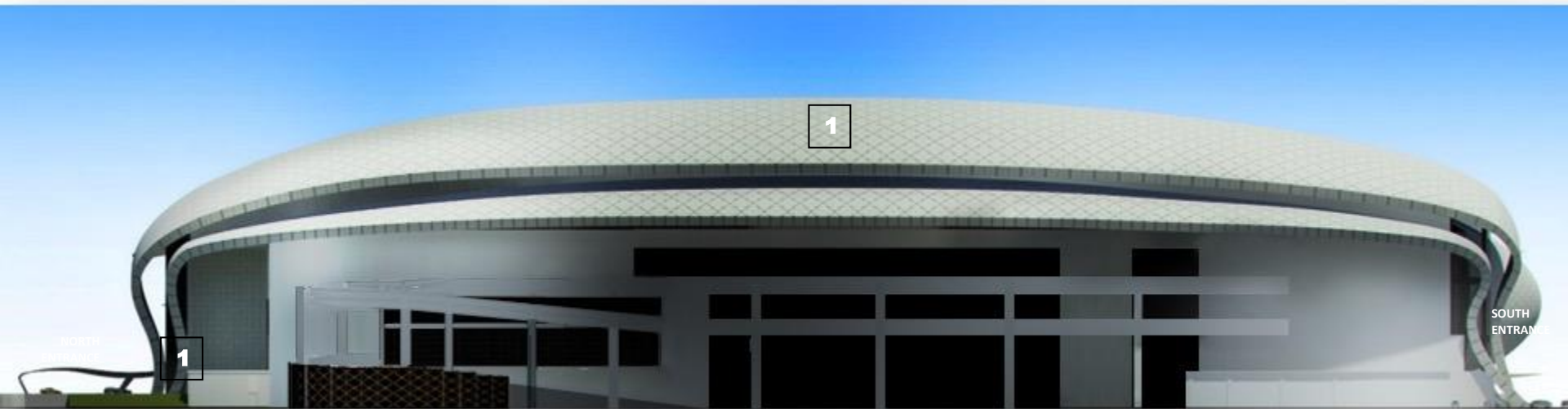
**LEFT ELEVATION (South Entrance)**

**ROOF MATERIAL**

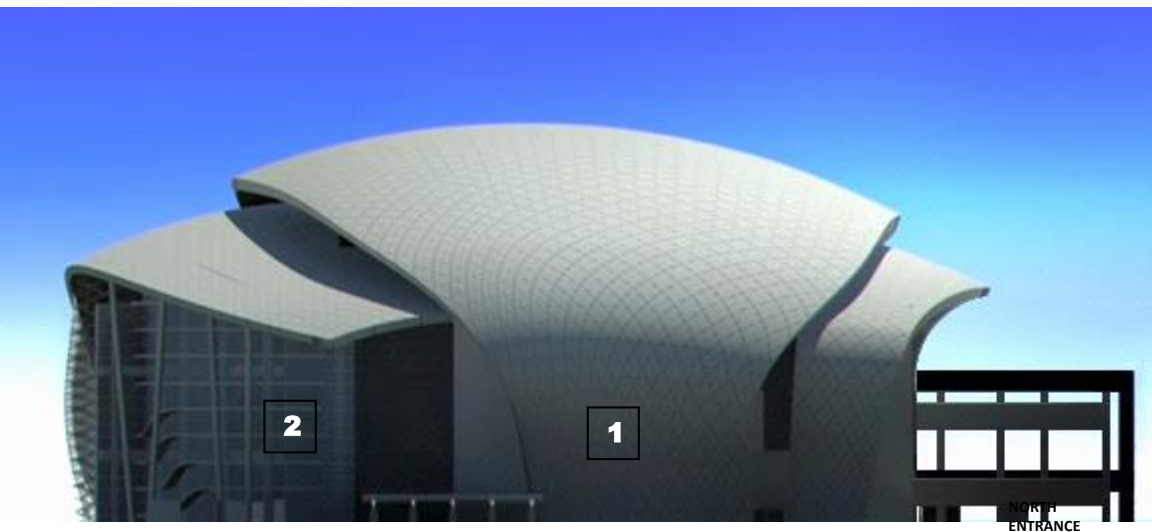
- Aluminum Panel Roofing in Diamond Pattern on Sika Sarnafil PVC membrane roof system

**FACADE**

- Glass façade with sun shading device
- Externally concaved glass wall-support on vertical M/S box sections behind glass lines
- Aluminum expanded wire mesh cladding
- Glazed façade with diamond shaped expression supported by steel diagrid



**REAR ELEVATION**



**RIGHT ELEVATION (North Entrance)**

1

**ROOF MATERIAL**

- Aluminum Panel Roofing in Diamond Pattern on Sika Sarnafil PVC membrane roof system

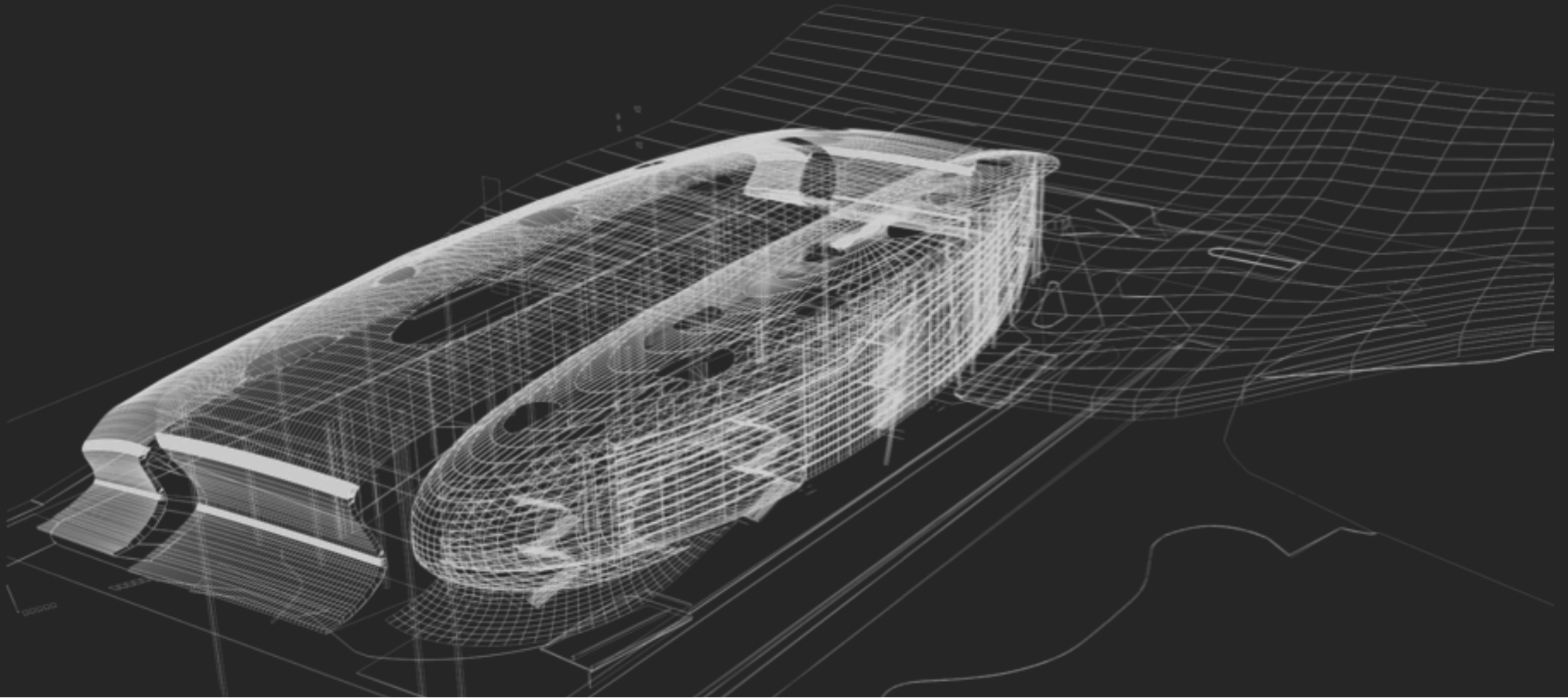
2

**FACADE**

- Glass façade with sun shading device



R O O F



### MAIN ROOF

WITH ACOUSTIC & THERMAL INSULATION

### FAÇADE TYPE S ( ROOF COMING DOWN AS PART OF FAÇADE )

WITHOUT ACOUSTIC & THERMAL INSULATION

### LOWER ROOF – BACK OF HOUSE

NO ACOUSTIC INSULATION  
WITH THERMAL INSULATION

### LOWER ROOF – FRONT OF HOUSE

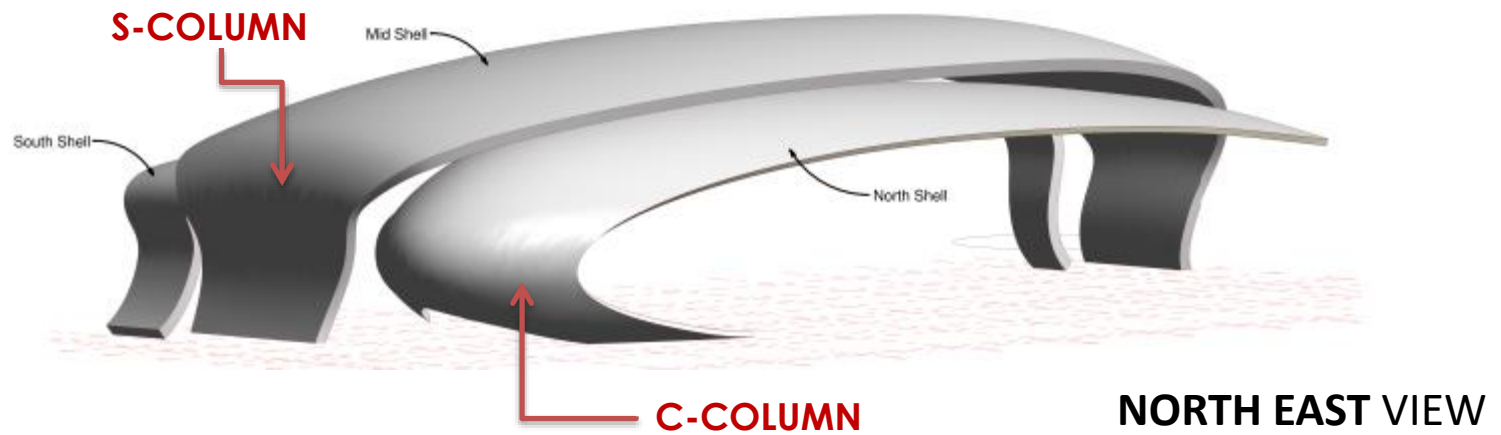
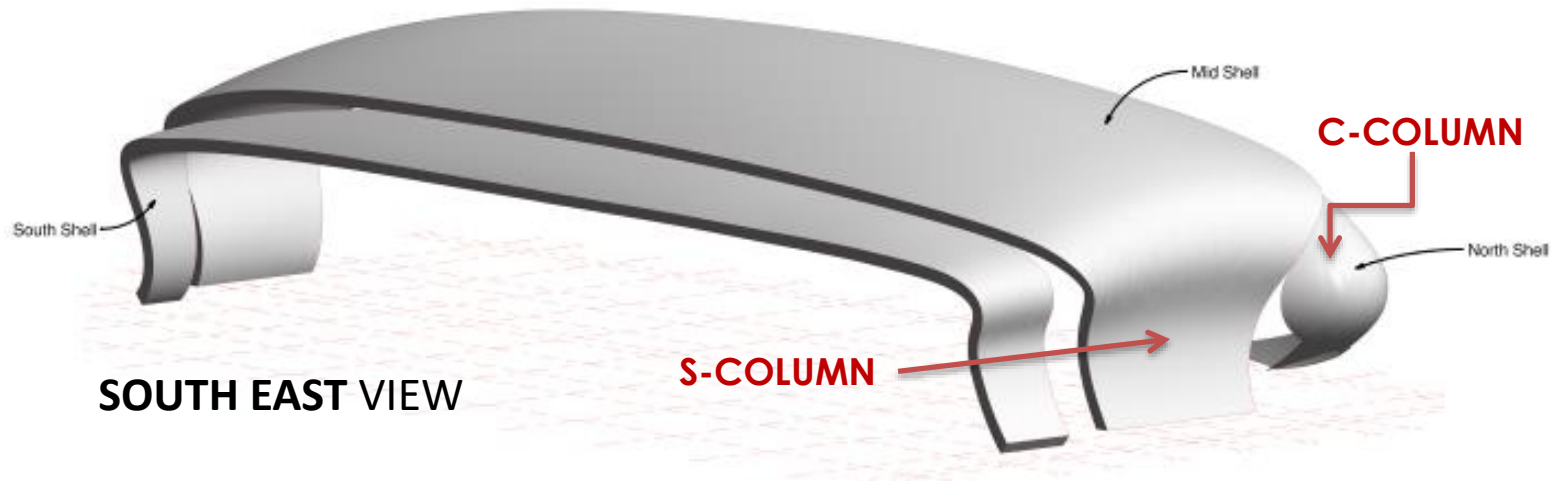
WITH ACOUSTIC & THERMAL INSULATION

### **ROOF CLADING**

**4MM THK ALUMINIUM COMPOSIT  
PANEL**

NOTE: THE NORTH CANOPY SHOWN IS NOT AS PER UPDATED DESIGN

# ROOF COMPONENTS







NORTH ELEVATION(S-COLUMN)





NORTH ELEVATION(S-COLUMN)





SOUTH ELEVATION (C-COLUMN)





SOUTH ELEVATION (C-COLUMN)



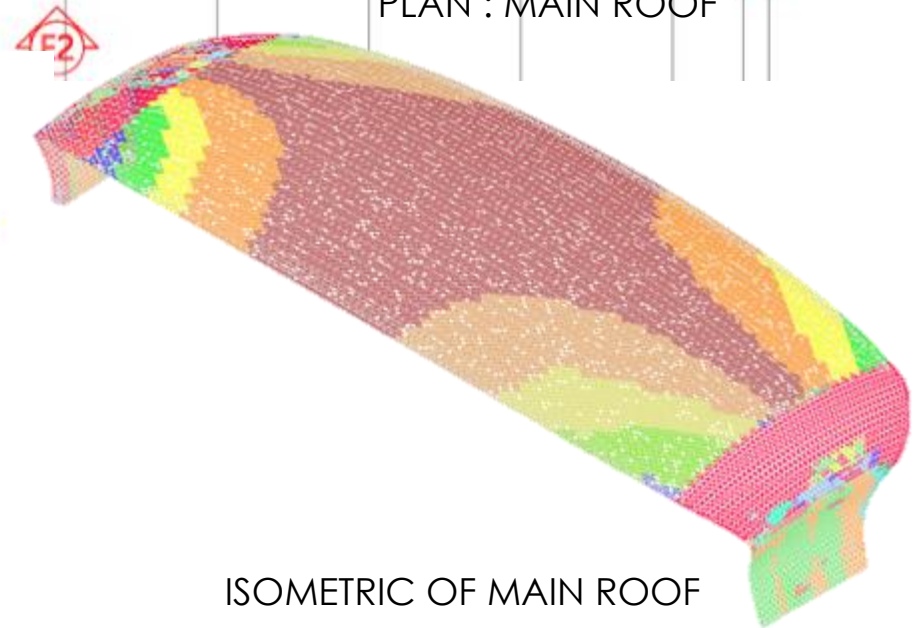
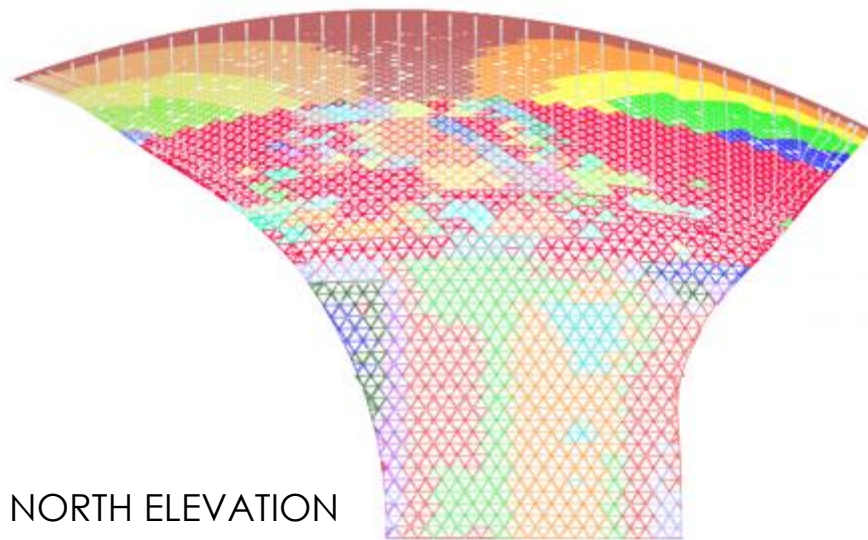
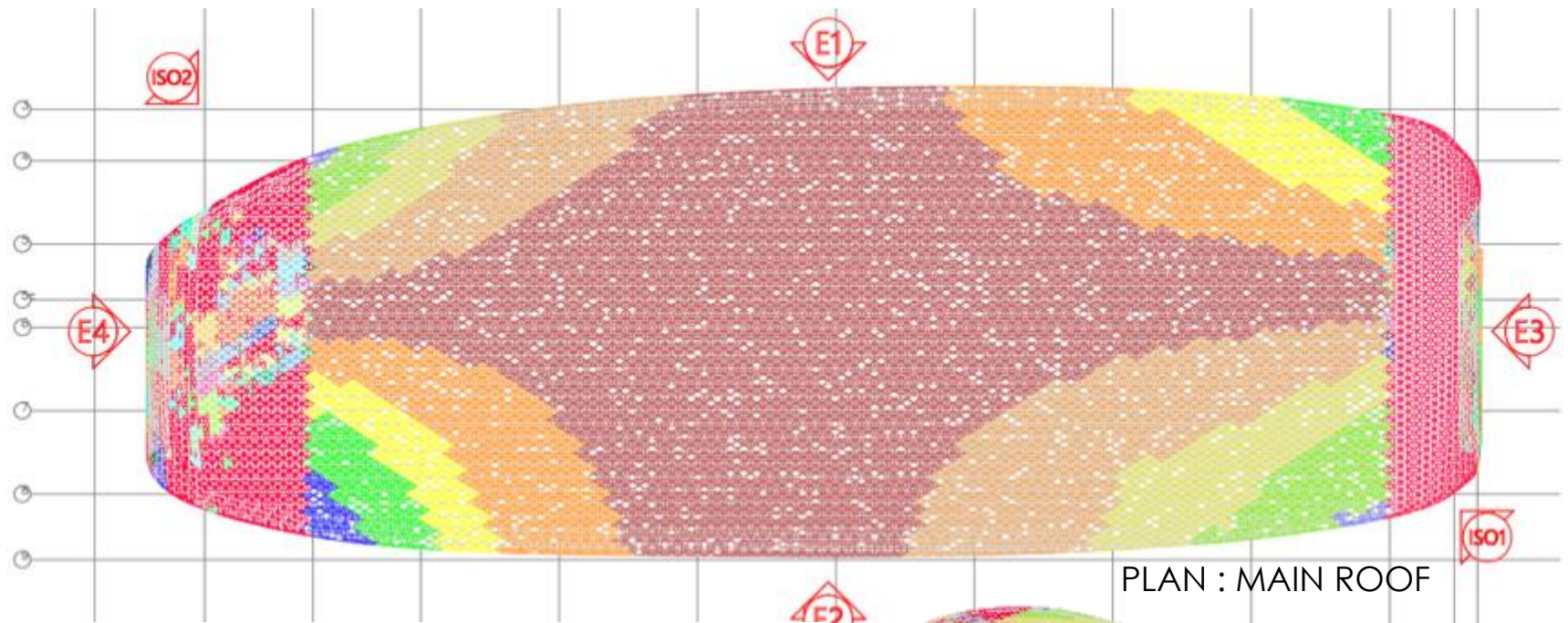


SOUTH ELEVATION (S-COLUMN)



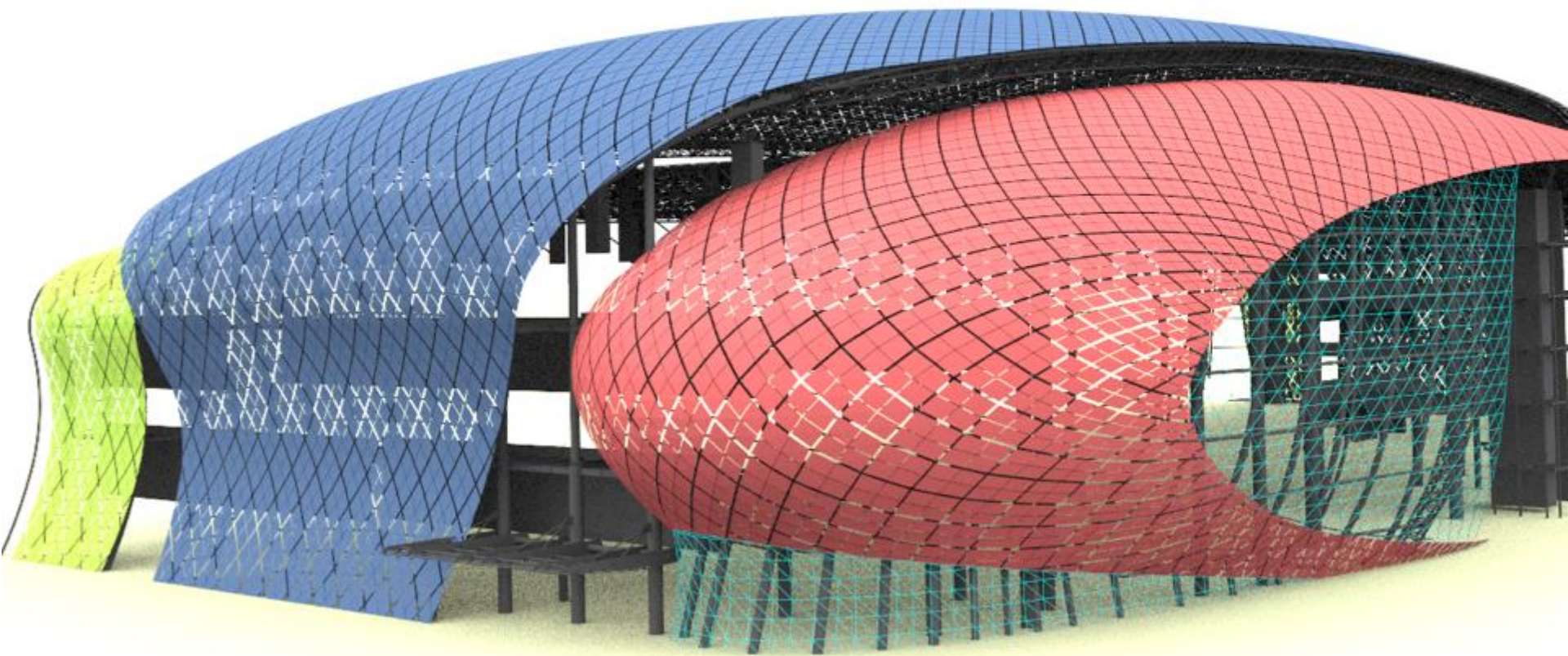


SOUTH ELEVATION (S-COLUMN)

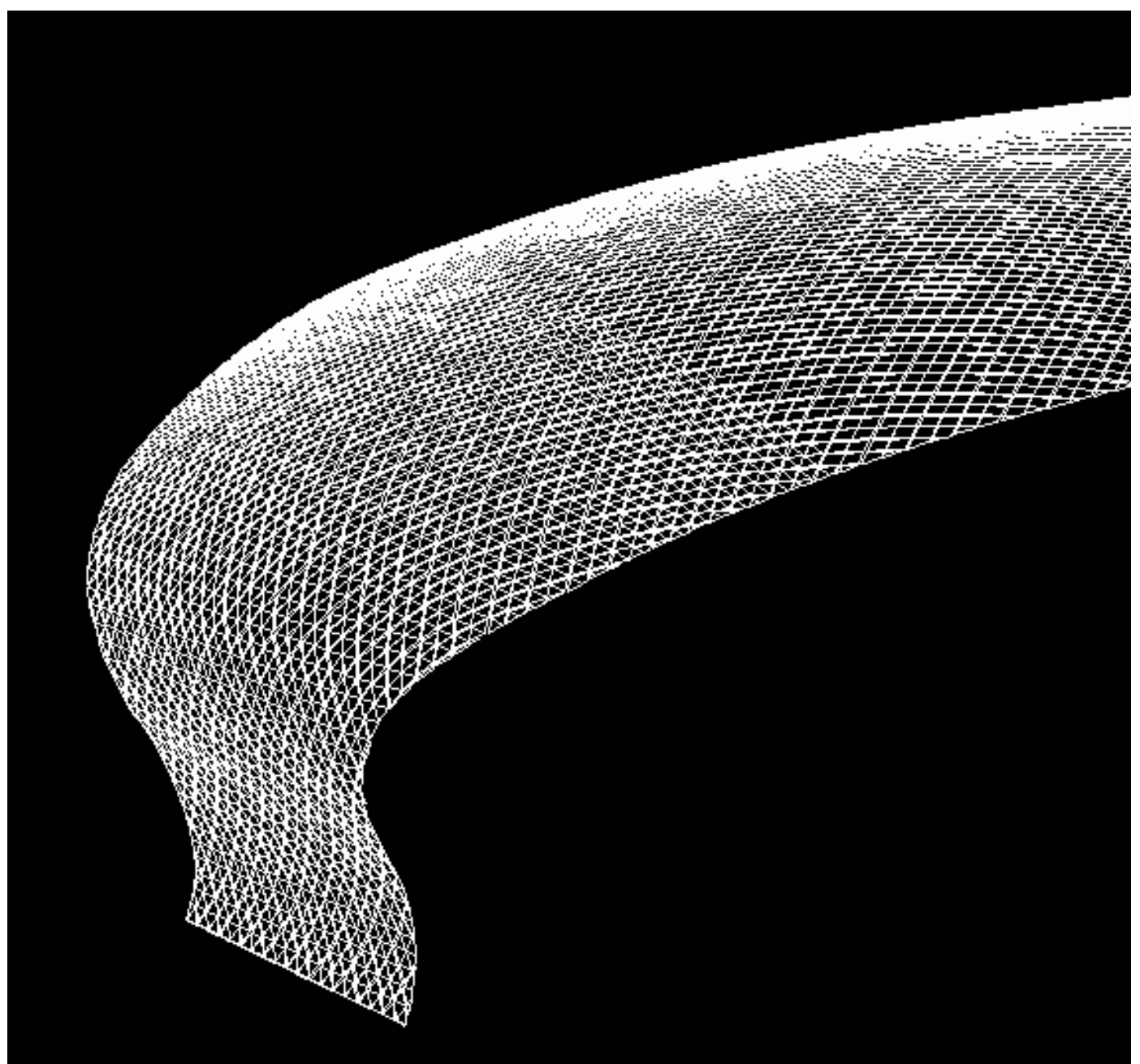


ROOF MODULATION



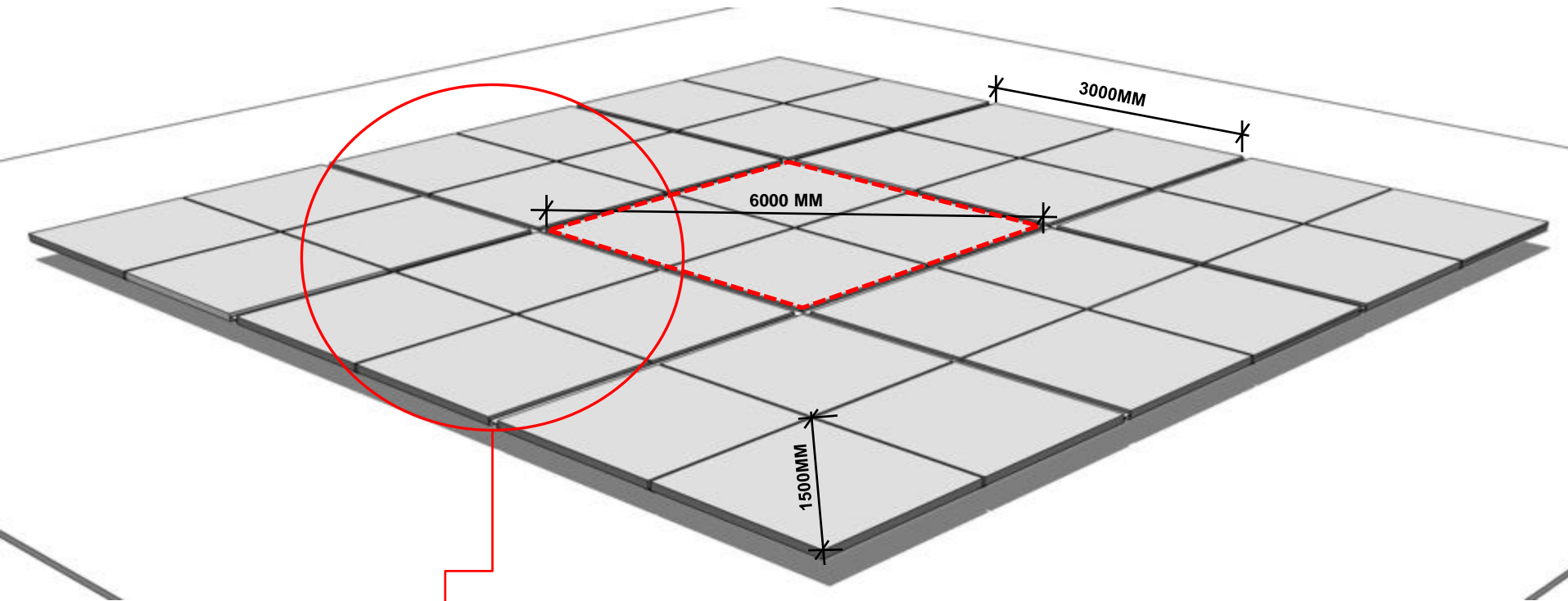


ROOF CLADING STUDY



ROOF PATTERN

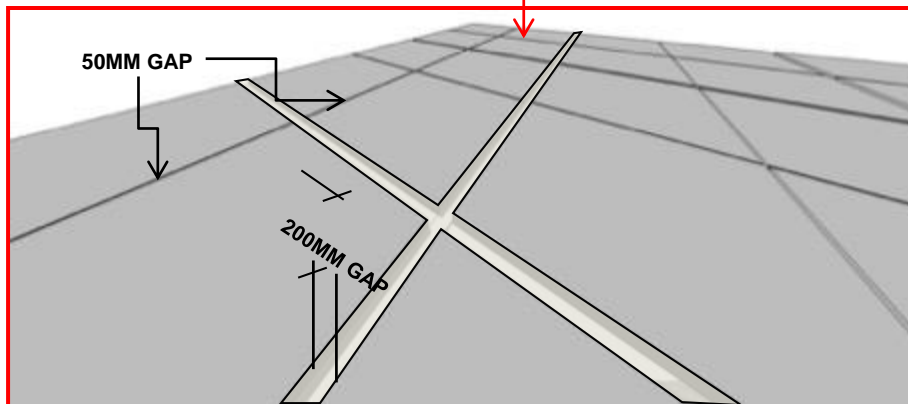




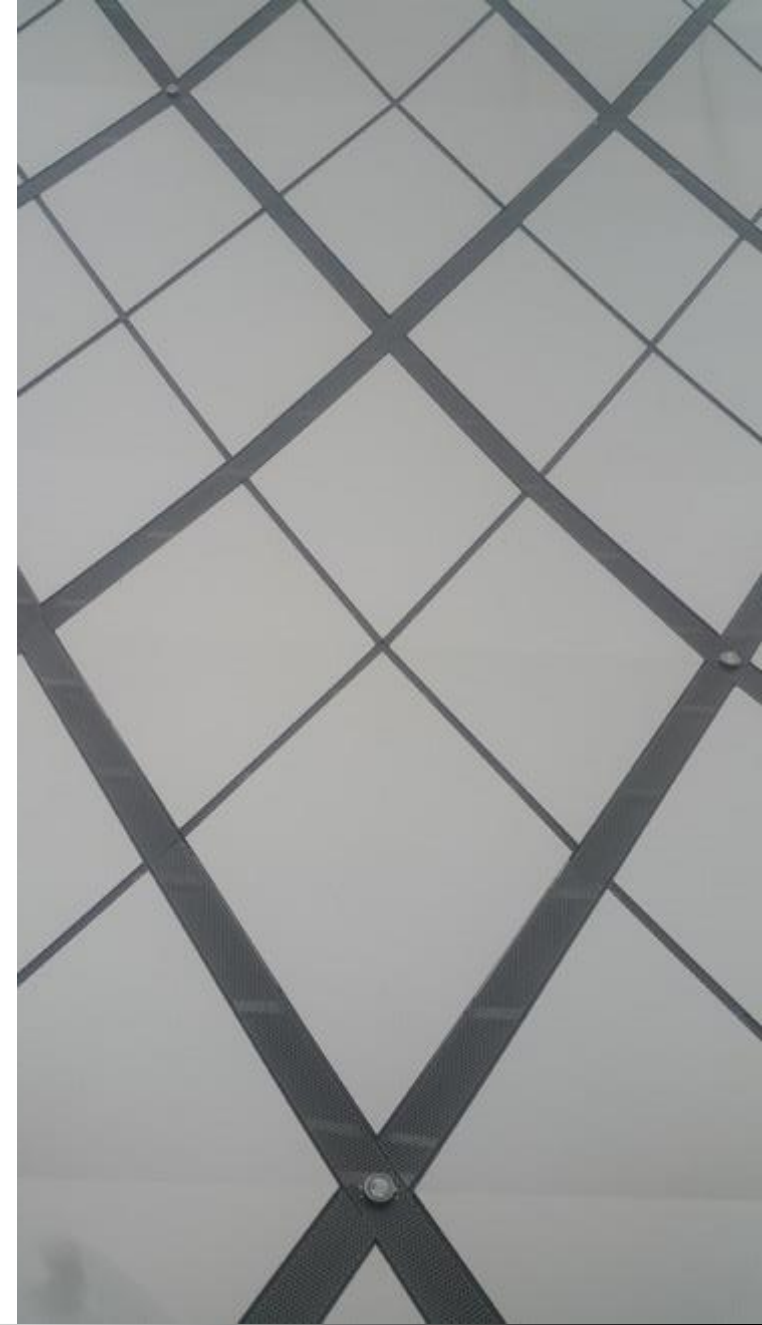
## ROOF PATTERN WITH 200MM & 50MM GAP

### **F A C T S :**

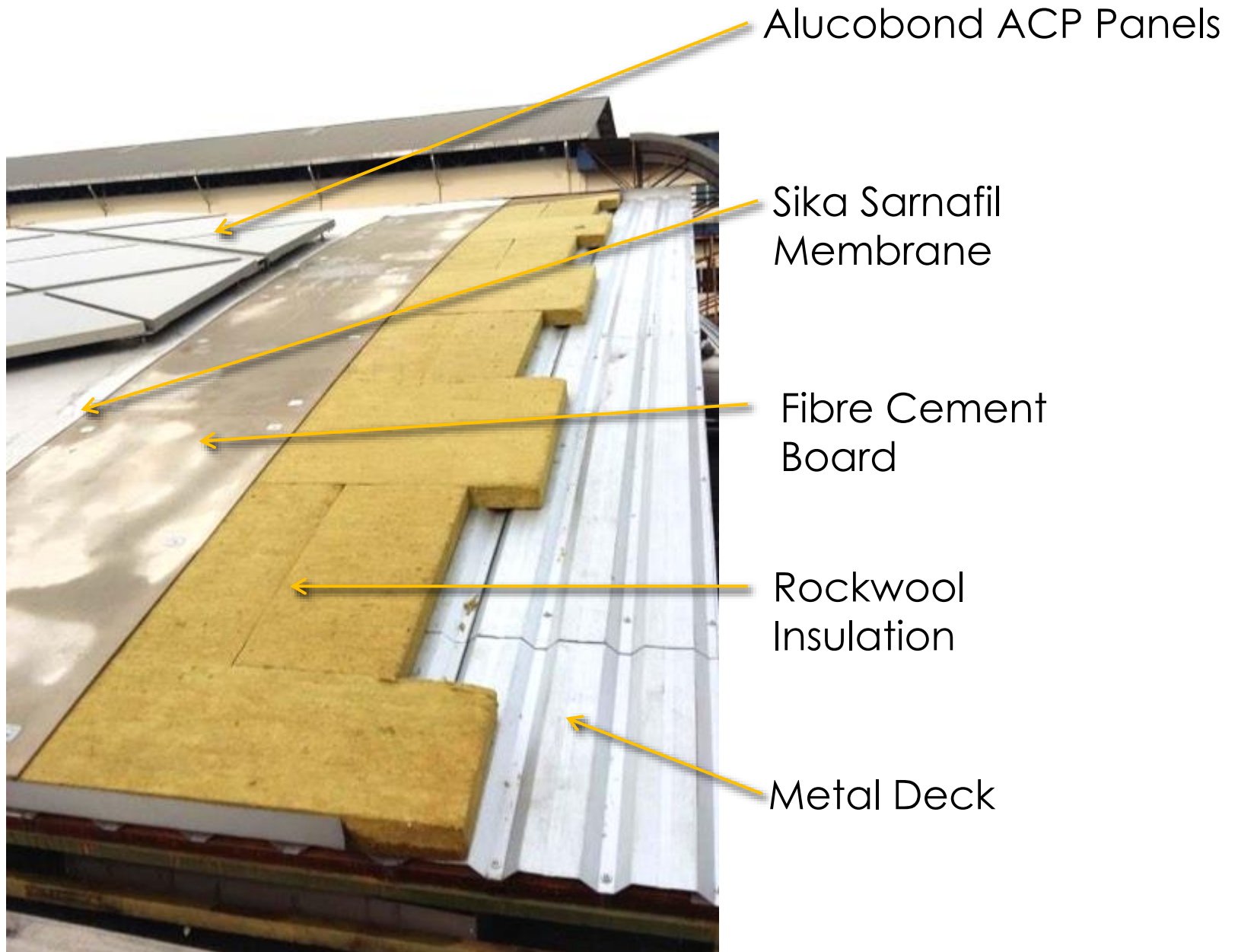
- The entire roof is made out of 20 700 pieces of ACP Panels
- Diamond pattern size varies from one location to another due to the curvature of the roof.
- 50 and 200mm gap is designed to achieve overall pattern concept.



ROOF PATTERN

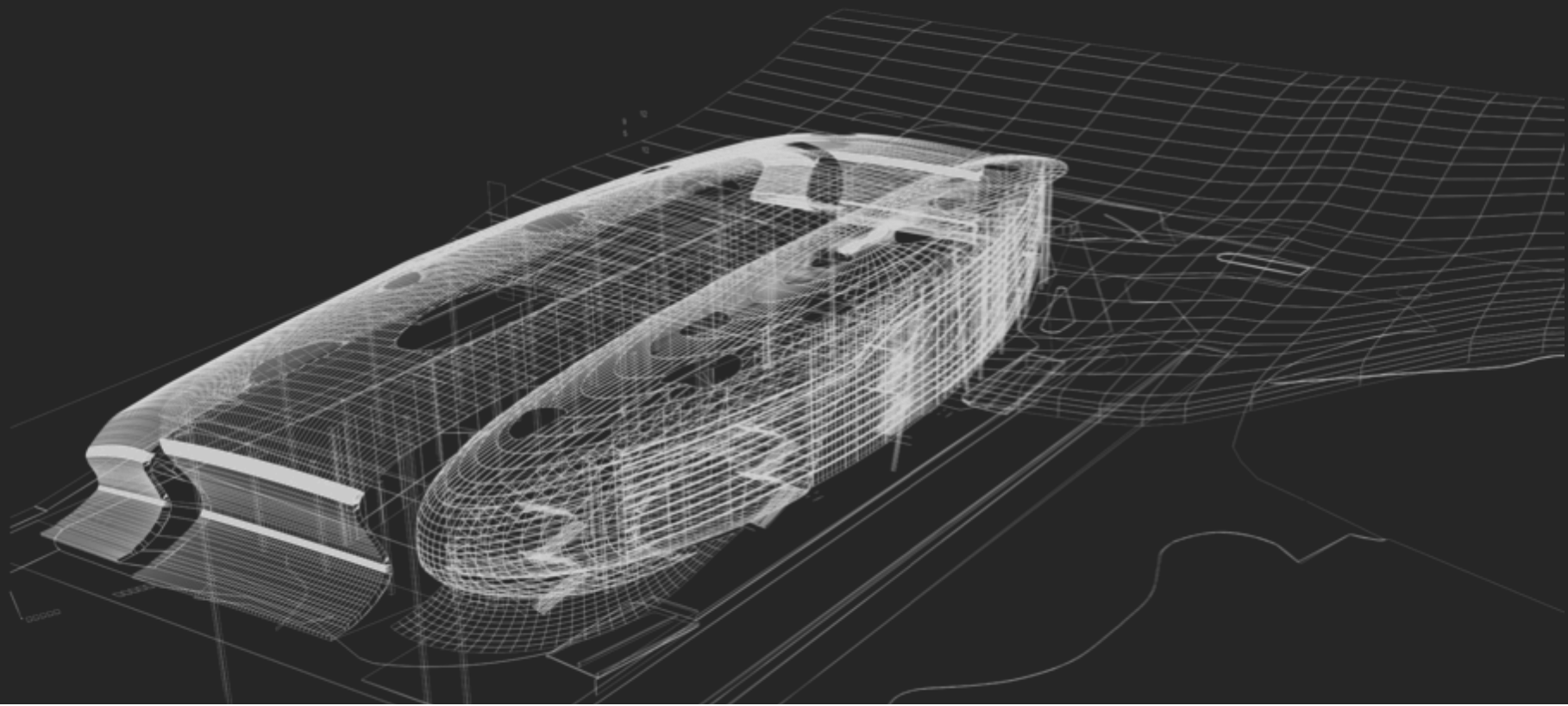


ROOF MODULE



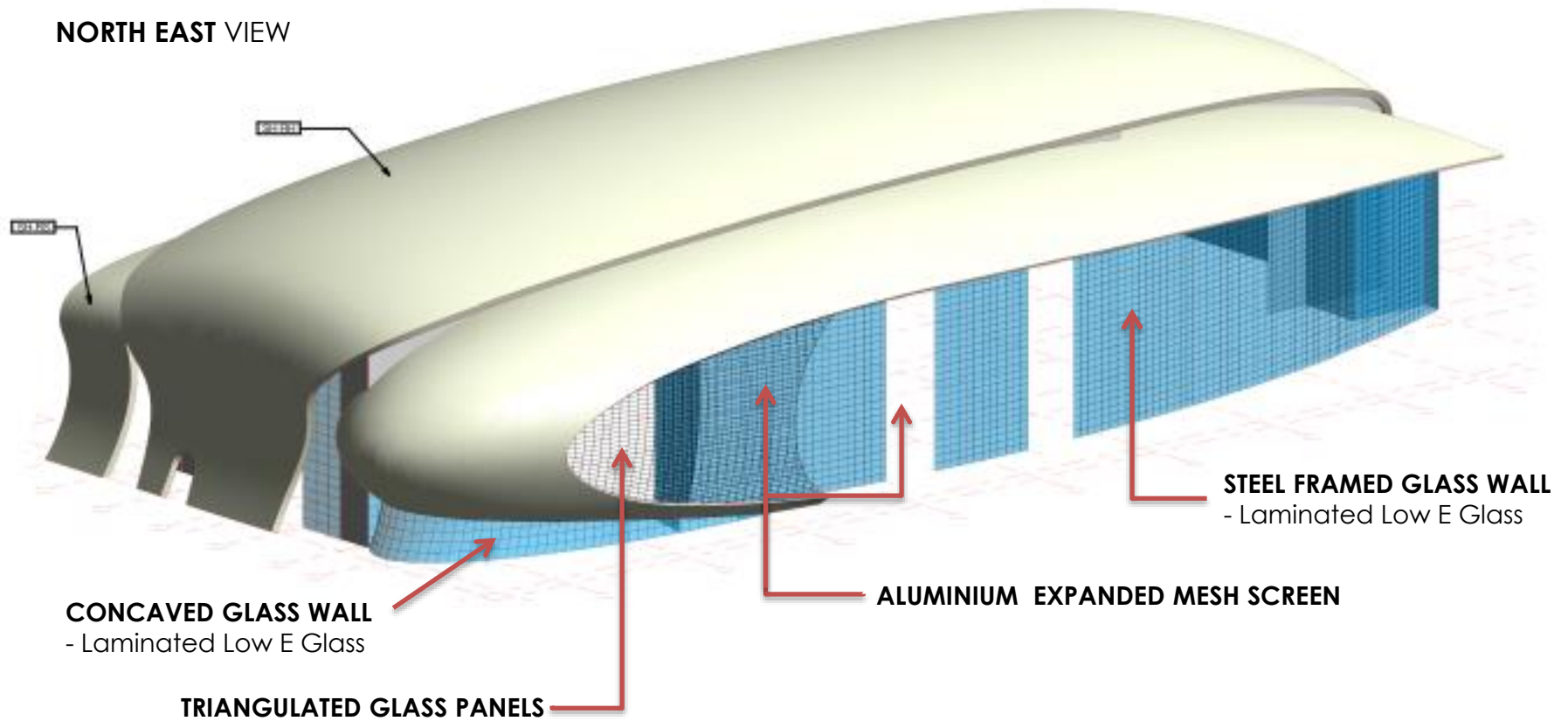
ROOF BUILT-UP SYSTEM

# FACADE

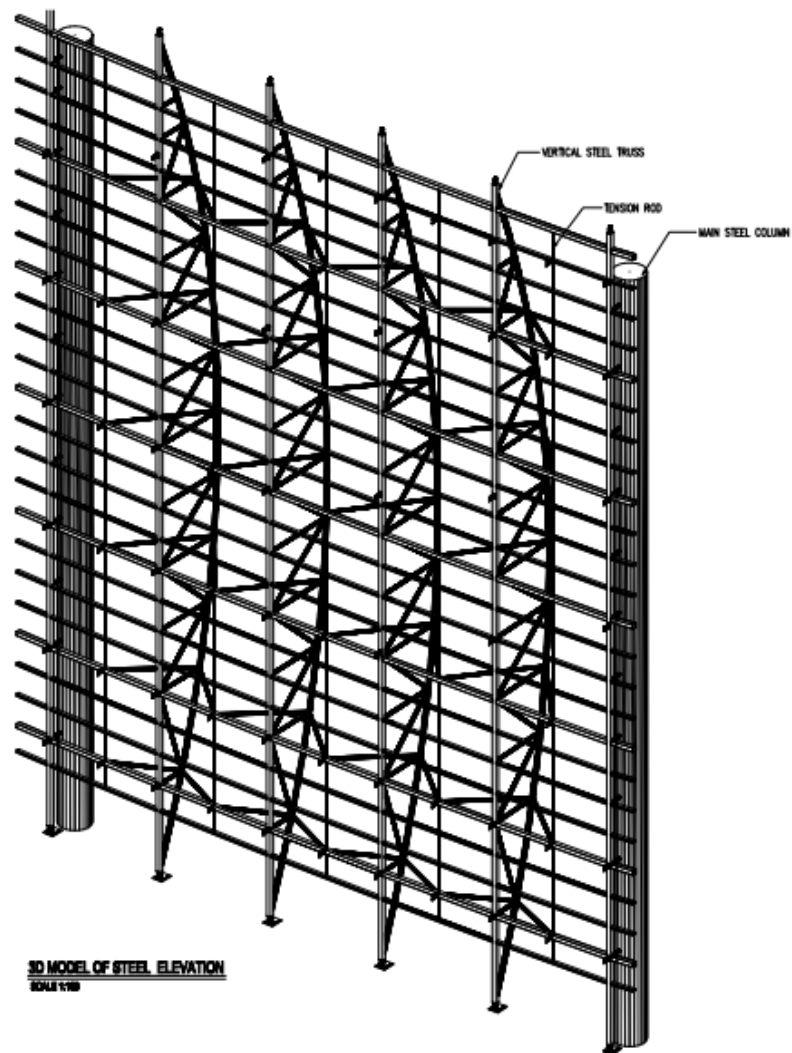




**NORTH EAST VIEW**

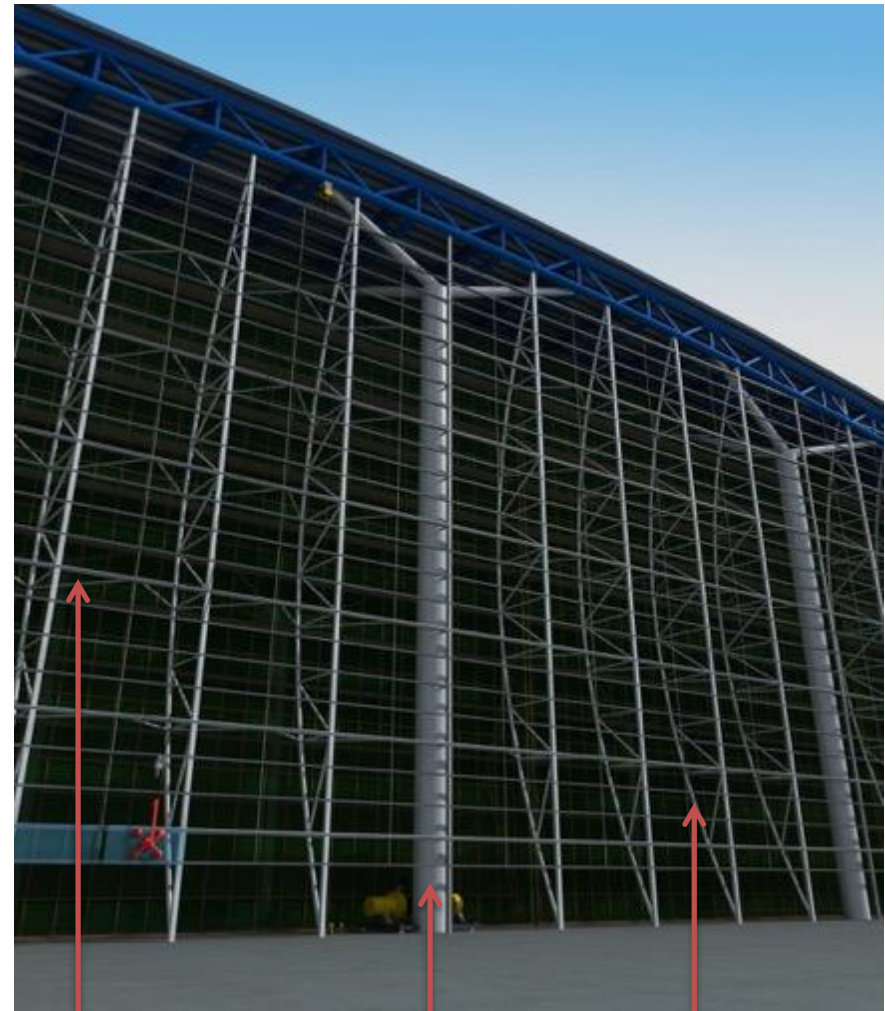


FACADE COMPONENTS

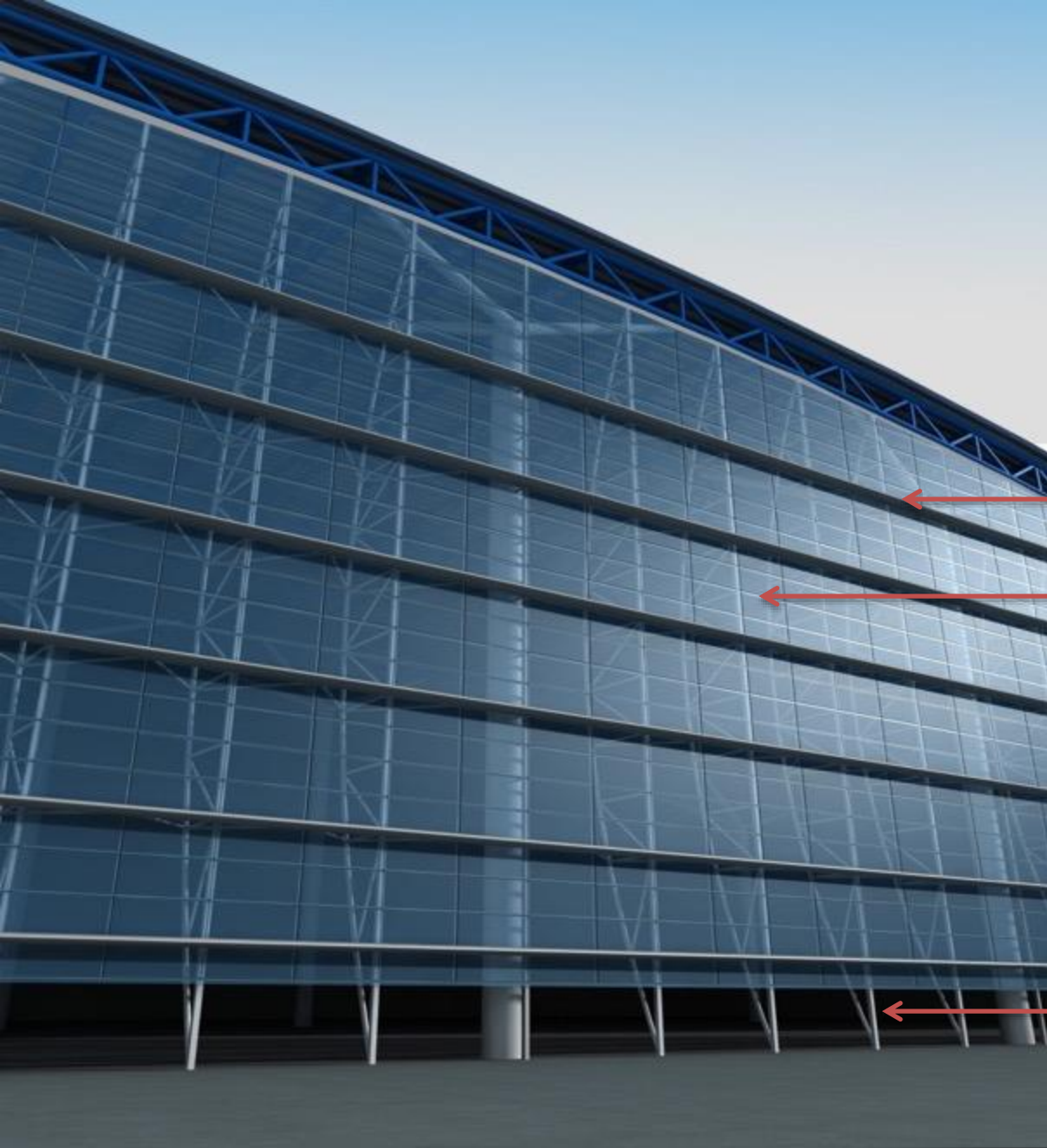


## TYPICAL FAÇADE BAY : STEEL BOW TRUSS

\*Max height is 43m



MAIN FACADE



**HORIZONTAL ALUMINIUM BULLNOSE  
(SUN SHADE)**

**LOW E LAMINATED GLASS  
PANELS**

**STEEL BOW TRUSS**

**MAIN FACADE**





FRONT FACADE





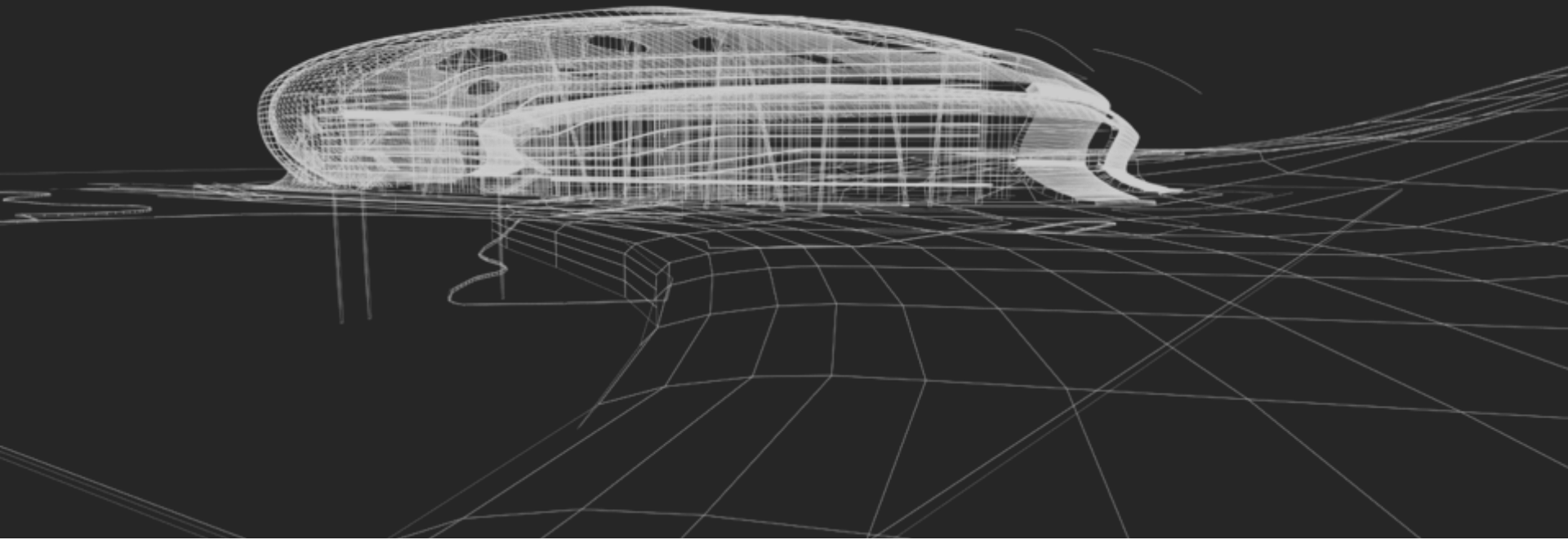
FRONT FACADE



FRONT FACADE

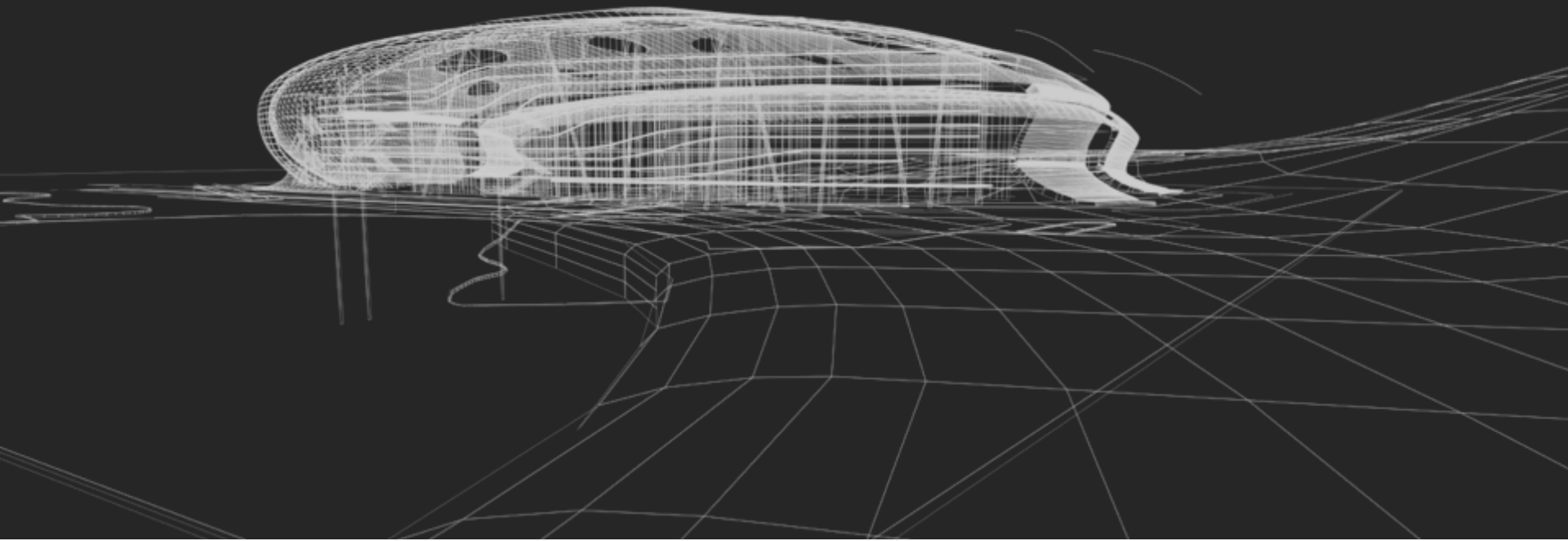


# CONSTRUCTION TIME-LAPSE





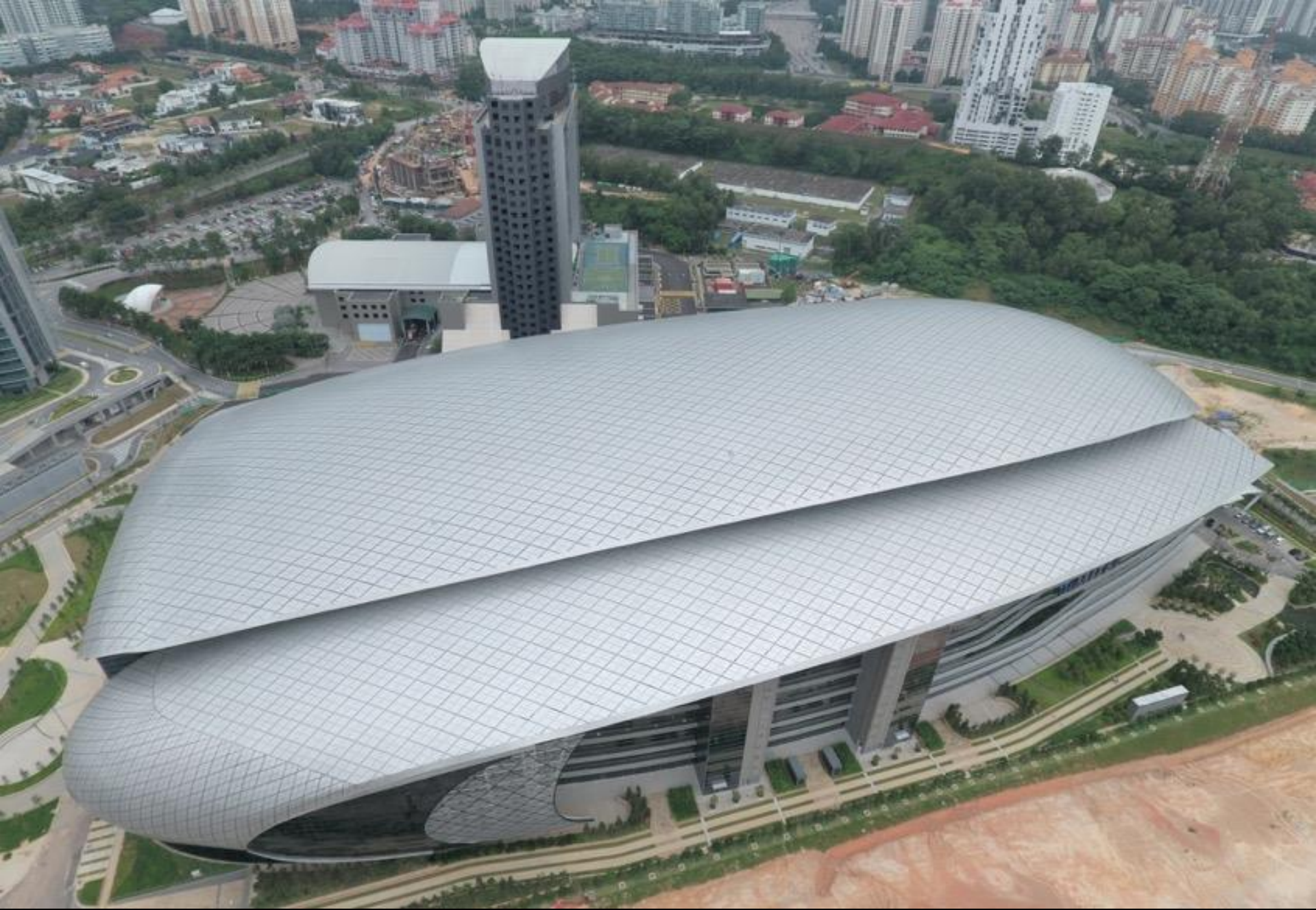
# COMPLETED BUILDING





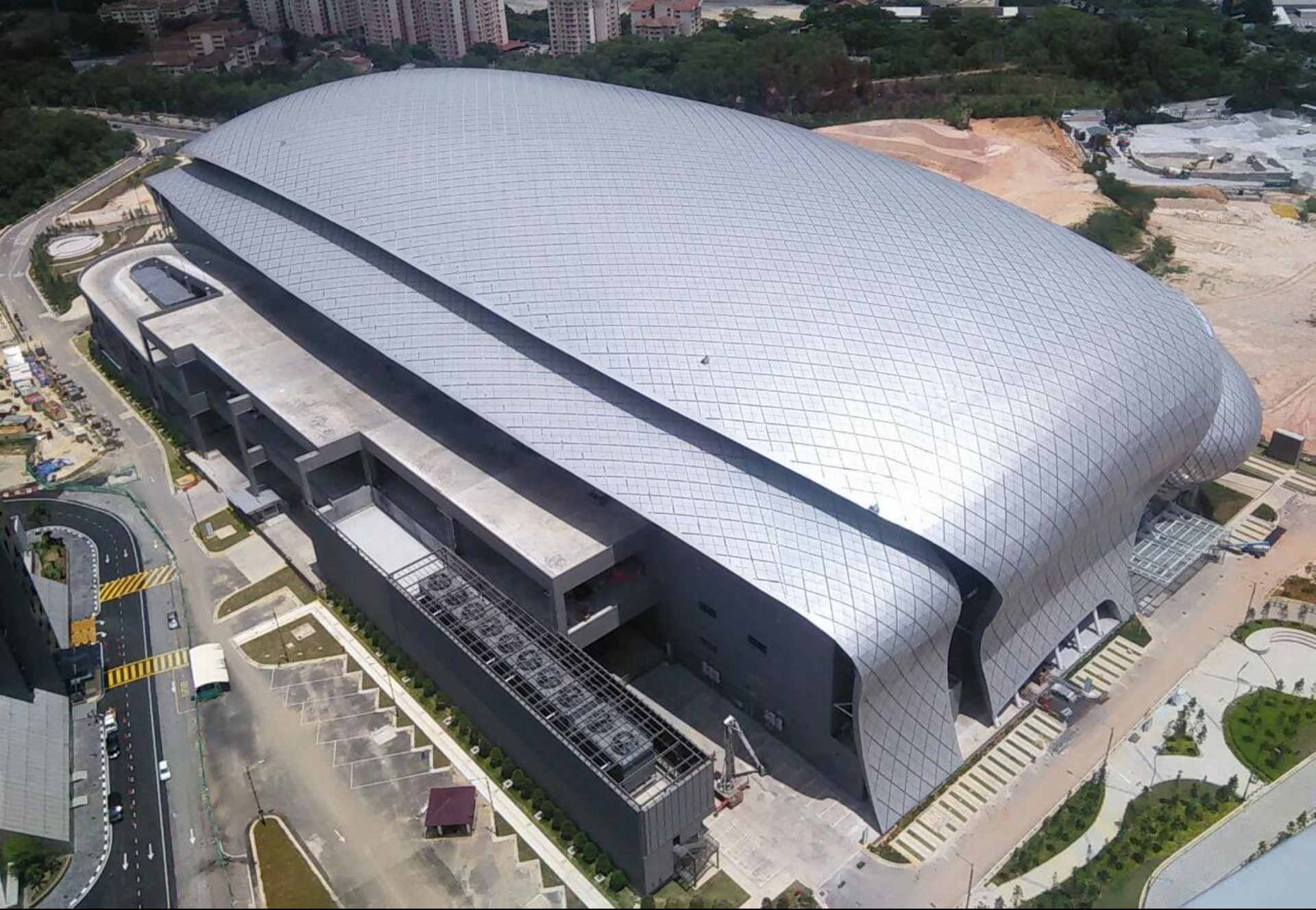
SOUTHVIEW





AERIAL VIEW





AERIAL VIEW

NIGHT VIEW







NORTH DROP-OFF





SOUTH FACCIDE



SOUTH FACADE





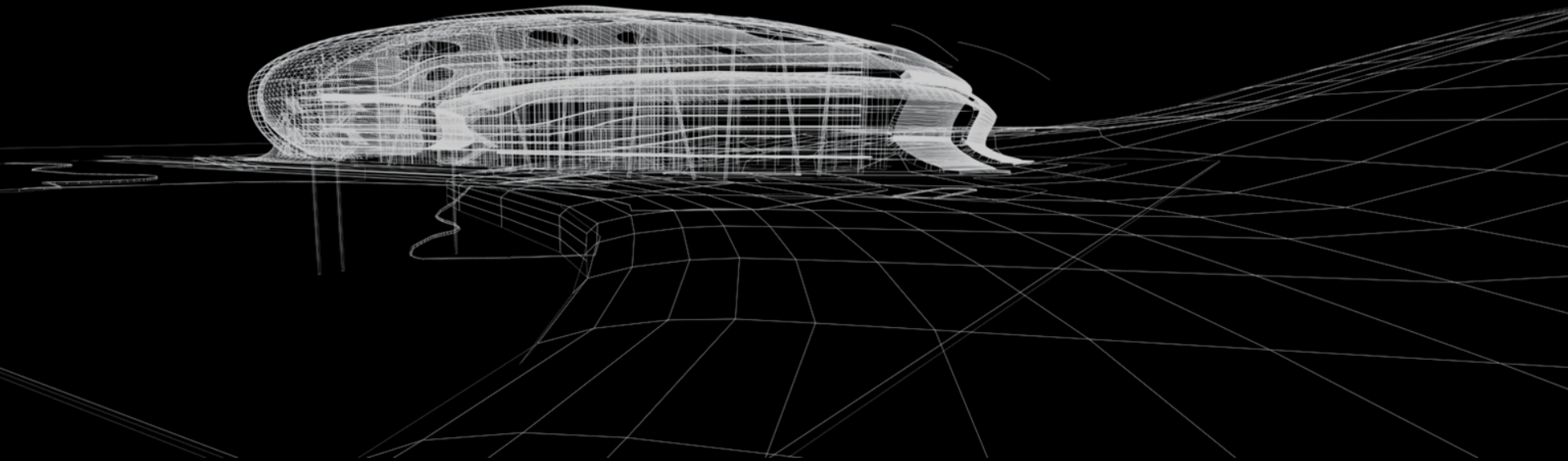
EXPANDED METAL SCREEN





MAIN FACADE

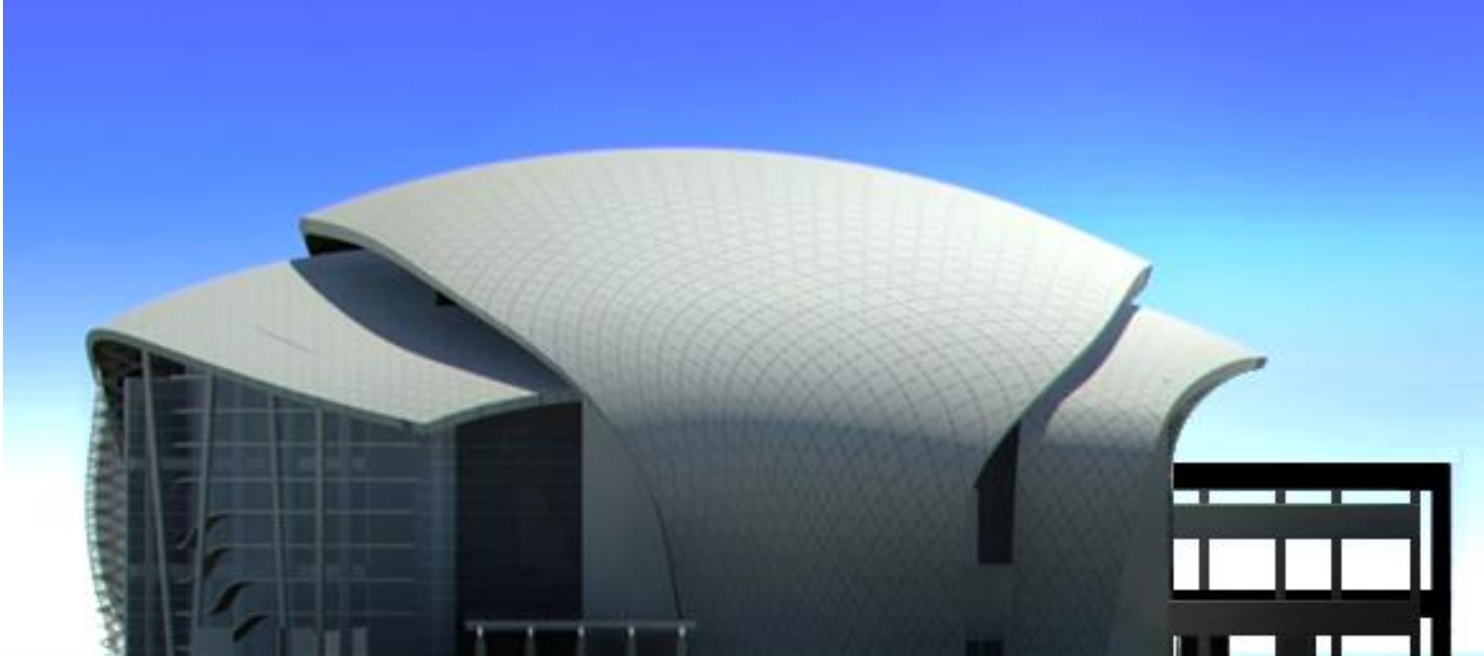
# PROPOSAL VS ACTUAL



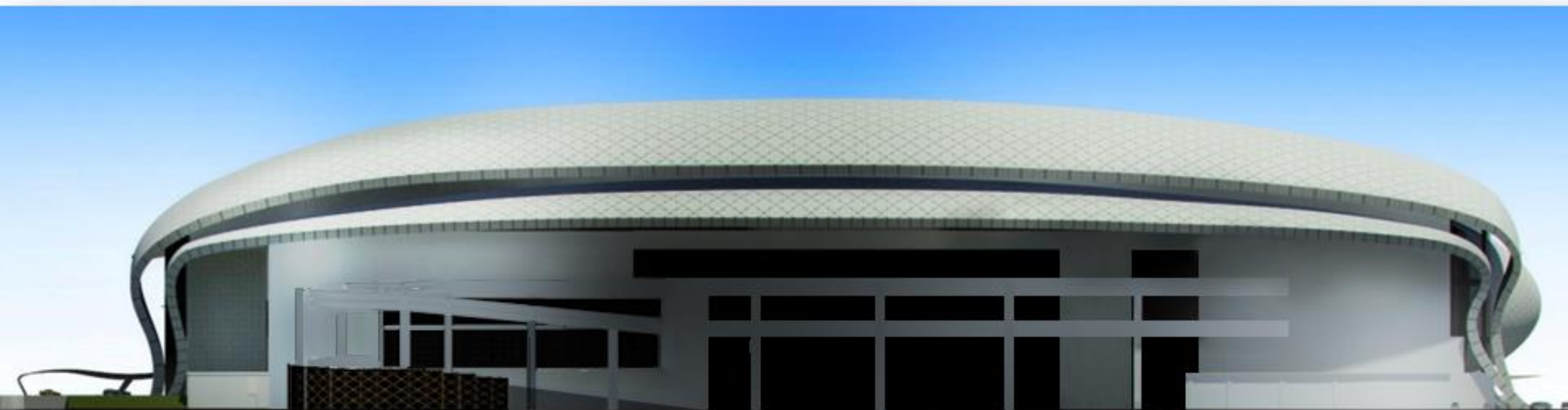


FRONT FACADE





NORTH FACADE



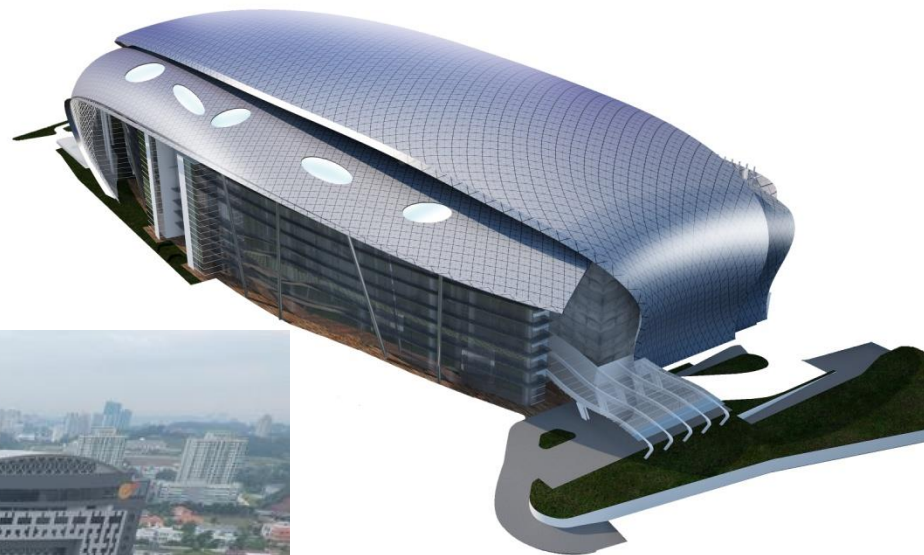
REAR FACADE





SOUTH FACADE





OVERALL

THANK YOU