



高产油漆(马)有限公司 (Co.No.281816-H)  
**KOSSAN PAINT (M) SDN. BHD.**  
 高产油漆营业有限公司 (Co.No.67149-T)  
**KOSSAN PAINT MARKETING SDN. BHD.**

*Name Behind Quality*

1, Jalan Koporat 1/KU 9,  
 Taman Perindustrian Meru,  
 42200 Kapar, Selangor Darul Ehsan,  
 Malaysia.

Tel : 603 3392 2799 (Main Line)  
 603 3392 4296/97/99/4307  
 Fax : 603 3392 3799  
 email : lsk@kossanpaint.com.my  
 website : www.kossanpaint.com

PRODUCT RANGE  
 DECORATIVE PAINTS •  
 FLOOR COATINGS •  
 MARINE & HEAVY DUTY  
 PROTECTIVE COATINGS •  
 POWDER COATINGS •

陸志強

**LOK CHEE KEONG**  
 Business Development Manager  
 H/P +6013-675 8040  
 email: sales@kossanpaint.com.my  
 cklok@kossanpaint.com.my



PRODUCTS RANGE

- DECORATIVE PAINTS
- POWDER COATINGS
- MARINE & HEAVY DUTY PROTECTIVE COATINGS
- FLOOR COATINGS

**KOSSAN PAINT (M) SDN. BHD.**

A MEMBER OF TRANSOCEAN COATINGS ASSOCIATION HOLLAND

# One Stop Solution



*Powder Coatings*



*Protective Coatings*



*Floor Coatings*



*Coil Coatings*



*Decorative Paints*



*Koskote*

**KosFLOR**  
 High Performance Concrete Protection





# Introducing Kossan Paint



**Kossan Paint (M) Sdn Bhd** has its humble beginning back in 1987. It has been putting its efforts in manufacturing and marketing of Marine Paints, Protective Coatings and Decorative paints that provided a total solution to the needs of protection and decoration. Encouraged by the wide acceptability of its wet paint products, Kossan Paint (M) Sdn Bhd went a step further to introduce Powder Coatings products in early 2001.

The company has continuously invested heavily in skilled training and product innovation (R&D) to provide superior quality at an affordable price.

Kossan Paint operates with total workforce of 180 workers and has grown from strength to strength not just through superior quality and services but also the employment of advance manufacturing equipment and aggressive R&D initiatives. Kossan Paint is able to roll out its products in a more cost-effective mode compared to its rivals.

Kossan Paint (M) Sdn Bhd currently runs on a state-of-the-art facility along Jalan Kapar, Klang, and Selangor. Spreading over a production area of 17,500 square meters, the plant is equipped the most sophisticated manufacturing equipment and an intergraded R&D department. The plant will have the capacity of churning out some 21,600 tonnes per annum of marine & protective coatings, powder coating, decorative paints & etc.

## Vision & Mission

Know for its superior quality and premium services with undivided support and commitment from its management and staffs, Kossan Paint (M) Sdn Bhd has invested heavily in skill trainings, upgrading courses and the provision of a conducive operating environment to foster a cordial and efficient working relationship and instill a sense of professionalism among its employees. Teamwork is an indispensable element that will bring the company to higher grounds.

Kossan Paint (M) Sdn Bhd aims to reduce the country's imports by developing value-added high-end products and strengthen its foreign exchange through a wide range of products that meet industrial requirements and international standards. As a member of Transocean Coatings Association based in the Netherlands, Kossan Paint always keeps abreast of contemporary global market trends with a pool of immense technological resources and industrial expertise.

## Name Behind Quality

Awarded with ISO 9001 Kossan Paint draws its strength from uncompromising effort to maintain a respectable level of product quality and customer services. Untiring quality control is carried out at every stage-from product development to production and packaging, delivery to after-sale service.

A superior product quality alone is not sufficient to put Kossan Paint a notch above its peers. As in any other businesses, Kossan Paint deals with PEOPLE, mainly its loyal customers. As such, the company has singled out customer relationship as an important area in its quest to acquire greater achievement in the future.

Paying tribute to its advanced manufacturing equipment and aggressive R&D initiatives, Kossan Paint is able to roll out its products in a more cost-effective way compared to its rivals. This has been manifested in its competitive pricing, which not only makes Kossan Paint's products reliable, but also affordable and much sought-after.



# Powder Coatings

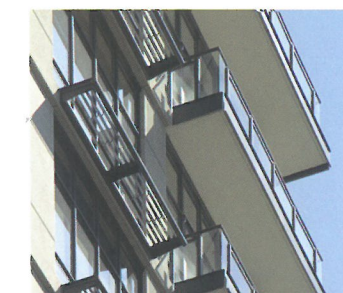
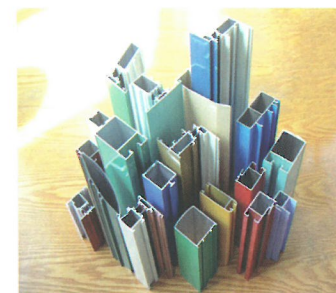
## Kossan *Koskote* Architectural Powder Coatings

*Koskote* APE-Series is an outdoor durable types polyester powder coatings designed to meet AAMA 2603 specifications whereas

*Koskote* SAPE-Series is a superdurable types polyester powder coatings designed to meet AAMA 2604 specifications. Both give decorative finishes provides excellent outdoor durability and resistance to yellowing on prolonged exposure to heat. These products are specially formulated to meet most stringent requirements for colour stability, gloss retention and corrosion protection therefore it is suitable for application to architectural work.

### APPLICATIONS

Curtain Walls	Doors
Light Poles	Metal Facade
Frames	Fencings
Railings	Window Frames
Extrusions	Panelling

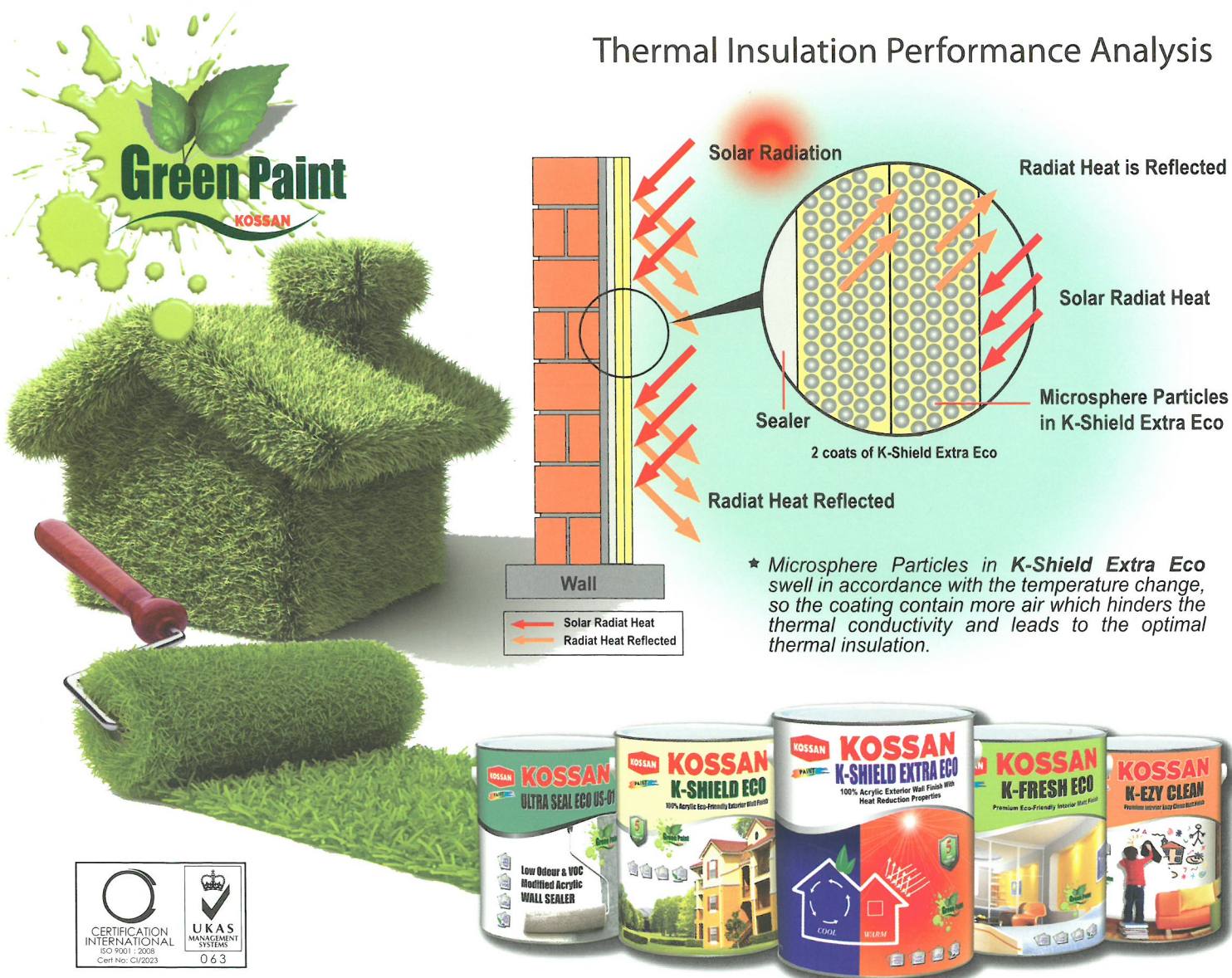




# Decorative & Green Paints



## Thermal Insulation Performance Analysis



# Floor Coatings

## KosFLOR

High Performance Concrete Protection



### KOSFLOR FC-150 (Solvent-free Epoxy Floor Coating)

KOSFLOR FC-150 is a self smoothing, solvent-free epoxy floor coating has a wide range of application uses ranging from light industrial areas to floors requiring long lasting performance.

### KOSFLOR SL-200 (Self-leveling Epoxy)

KOSFLOR SL-200 is a self leveling, seamless epoxy floor topping capable of being apply at varying thickness from 2-4mm to suit the uses of floor. KOSFLOR SL-200 designed for environment requiring hygienic, hard wearing and chemical resistance.

### KOSFLOR SC-500 (Epoxy Mortar Screed)

KOSFLOR SC-500 is a trowel applied solvent-free epoxy mortar screed. generally applied at >5mm thickness to achieves an exceptional strength characteristics, abrasion & impact resistance for areas with extreme wear & tear.

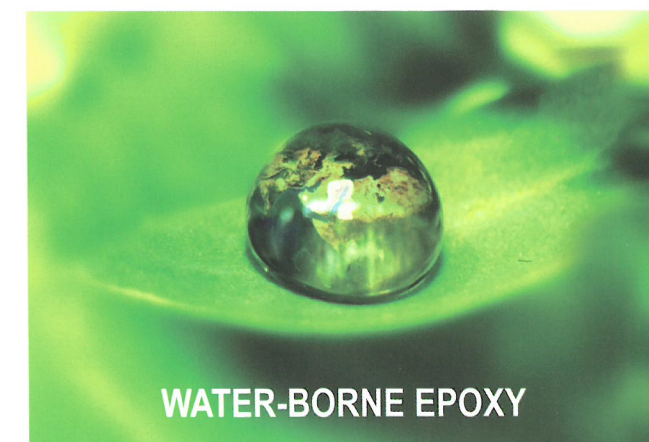


### KOSFLOR AST-470 (High Solids Epoxy Textured Floor Coating)

KOSFLOR AST-470 is a high solids epoxy floor coating formulated with selection graded & treated silica quartz to provides anti-slippery texture. Can be used as intermediate coat/finishing coat in atmospheric environment.

### KOSFLOR AST-490 (Glass Flakes Epoxy Textured Floor Coating)

KOSFLOR AST-490 is a glass flakes reinforcement epoxy floor coating formulated with selection of graded abrasive media to provides anti-slippery texture finish. KOSFLOR AST-490 used to various degree of mechanical and chemical exposure environment.

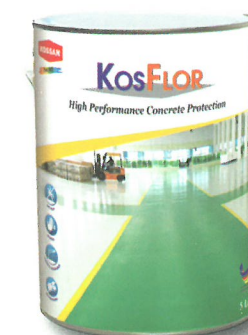


### KOSFLOR FC-260 (Water-borne Epoxy Floor Coating)

KOSFLOR FC-260 is special formulated water-borne epoxy floor coating used to damp concrete. KOSFLOR FC-260 has an unique permeable structure which enable moisture vapor escaping from concrete slab thereby to prevent detach/delamination.

### KOSFLOR SL-261 (Water-borne Self-leveling Epoxy)

KOSFLOR SL-261 is a water-borne self leveling, seamless epoxy floor topping capable of being apply at varying thickness from 2-4mm to suit the uses of floor. KOSFLOR SL-261 designed to be constituting with KOSFLOR FC-260 as a topping for a hard wearing protection and enable moisture vapor escape from concrete slab.





# Protective Coatings

## Protective Coating Range



Alkyd Based

- 1.) Primer - Transogard
- 2.) Under Coat - Transolac Undercoat
- 3.) Top Coat - Koskyd

Modified Alkyd Based

Kosrapid

Epoxy Based

Transpoxy

Acrylic Based

Kosacrylic

Chlorinated Rubber Based

Transoprene

Polyurethane Based

Transurethane

Stoving Enamel

Kosbaking



## Properties Comparison Table

	Alkyd	Bituminous	Chlorinated rubber	Vinyl	Epoxy	Urethane	Zinc silicate
Tolerance to lower degree of surface preparation	++	++	+	-	+	+	-
Corrosion protection	++	++	++	++	+++	++	+++
Gloss/colour retention	++	-	+	++	+	+++	-
Abrasion resistance	+	+	+	+	+++	++	+++
Water immersion	-	++	++	++	+++	++	+++
Acid resistance	-	-	+	+	++	++	-
Alkali resistance	-	++	++	++	+++	++	-
Solvent resistance	-	-	-	-	++	++	+++
- = Poor    + = Fair    ++ = Good    +++ = Excellent							

# Coil Coatings



## Koscoil – Universal Primer

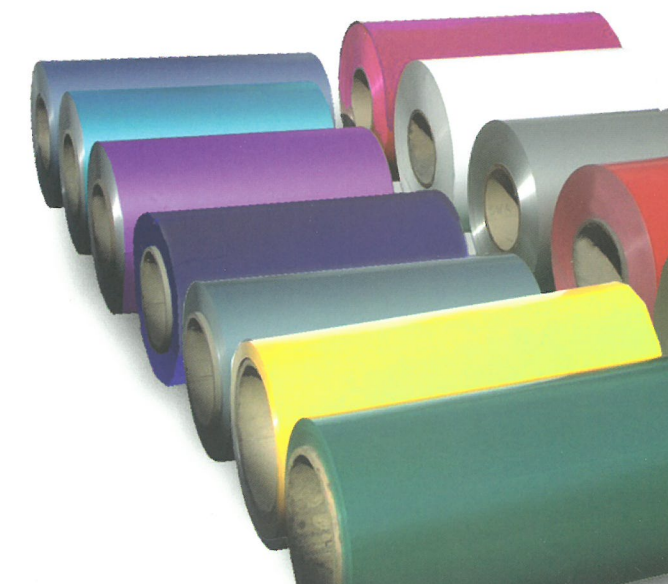
- Formulated with special modified polyester resin.
- Provides adhesion to most top coats.
- Designed to give good flexibility, corrosion resistance and inter coat adhesion.

## Koscoil – Polyester TopCoat (DT-130 Series)

- Formulated with modified polyester resin.
- Provides good weathering resistances.
- Available with wide range of colors and gloss.
- Provides good balance in flexibility and adhesion.
- Can cure at high speed applications on the coil coating lines.

## Koscoil – TOC (Waterpon # 800 Series)

- Formulated based on water base resin.
- Gives good surface treatment for Zn-Al plated steel.
- Excellent corrosion resistances.
- Finger Print Resistances.
- Good weather resistances.







*Name Behind Quality*

**[www.kossanpaint.com](http://www.kossanpaint.com)**

**KOSSAN PAINT (M) SDN BHD  
(Central Branch)**

1, Jalan Koporat 1/KU 9,  
Taman Perindustrian Meru,  
42200 Kapar, Selangor Darul Ehsan, Malaysia  
Tel: 03-3392 2799 03-3392 4296 / 97 / 99 / 4307  
Fax: 03-3392 3799  
E-mail: [sales@kossanpaint.com.my](mailto:sales@kossanpaint.com.my)

**KOSSAN PAINT (M) SDN BHD  
(Kota Kinabalu Branch)**

Lot SD 39, Semi Detach Industrial Lot,  
Taman Industri Warisan Indah, KM11,  
Jalan Tuaran, Inanam, 88450 Kota Kinabalu.  
Tel: 088-383 457  
Fax: 088-382 457  
E-mail: [kpmkk@kossanpaint.com.my](mailto:kpmkk@kossanpaint.com.my)

**KOSSAN PAINT (M) SDN BHD  
(Sandakan Branch)**

Ground Floor, Block N,  
Lot 9B, Bandar Ramai-Ramai,  
P.O. Box 317, 90007 Sandakan, Sabah.  
Tel: 089-272 417  
Fax: 089-272 451  
E-mail: [kpmsdk@kossanpaint.com.my](mailto:kpmsdk@kossanpaint.com.my)

**KOSSAN PAINT (M) SDN BHD  
(Sibu Branch)**

No.4, Jalan Maludan Utara,  
96000 Sibu, Sarawak.  
Tel: 084-216 291  
Fax: 084-215 101  
E-mail: [kpmsibu@kossanpaint.com.my](mailto:kpmsibu@kossanpaint.com.my)