



# **PROJECT HEALTH CHECK (OVERVIEW)**

(OVERVIEW)

# OBJECTIVE OF PHC

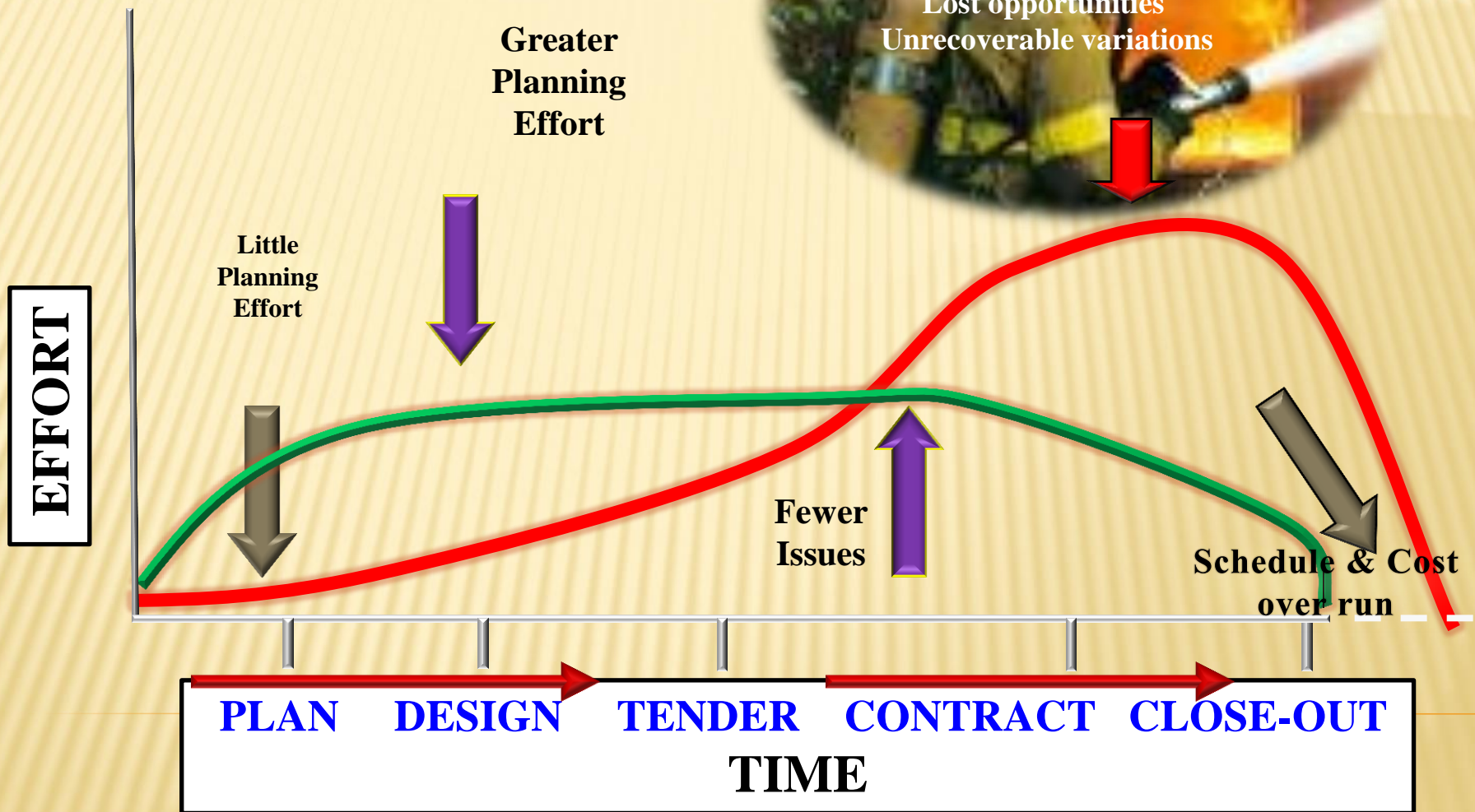
- Is a **comprehensive review** to assist you in conforming that your project is achieving what it is designed to do.
- Is a **short diagnose** to establish **project's status**
- Is a **short independent assessment** of how well the **project is performing** in accordance to its **objectives and standards**.
- To identify the **strength and weakness** of the project through PHC questionnaire

# OUTPUT OF PHC

- ✿ Short **summary report** identifying the project strength and areas requiring improvement
- ✿ **Rating of potential impact of issues** to the project performance
- ✿ **Suggested action to be taken** by the project team
- ✿ **Follow-up date of revisiting** and project's check-up.



Why  
**PROJECT HEALTH  
CHECK**  
needed?



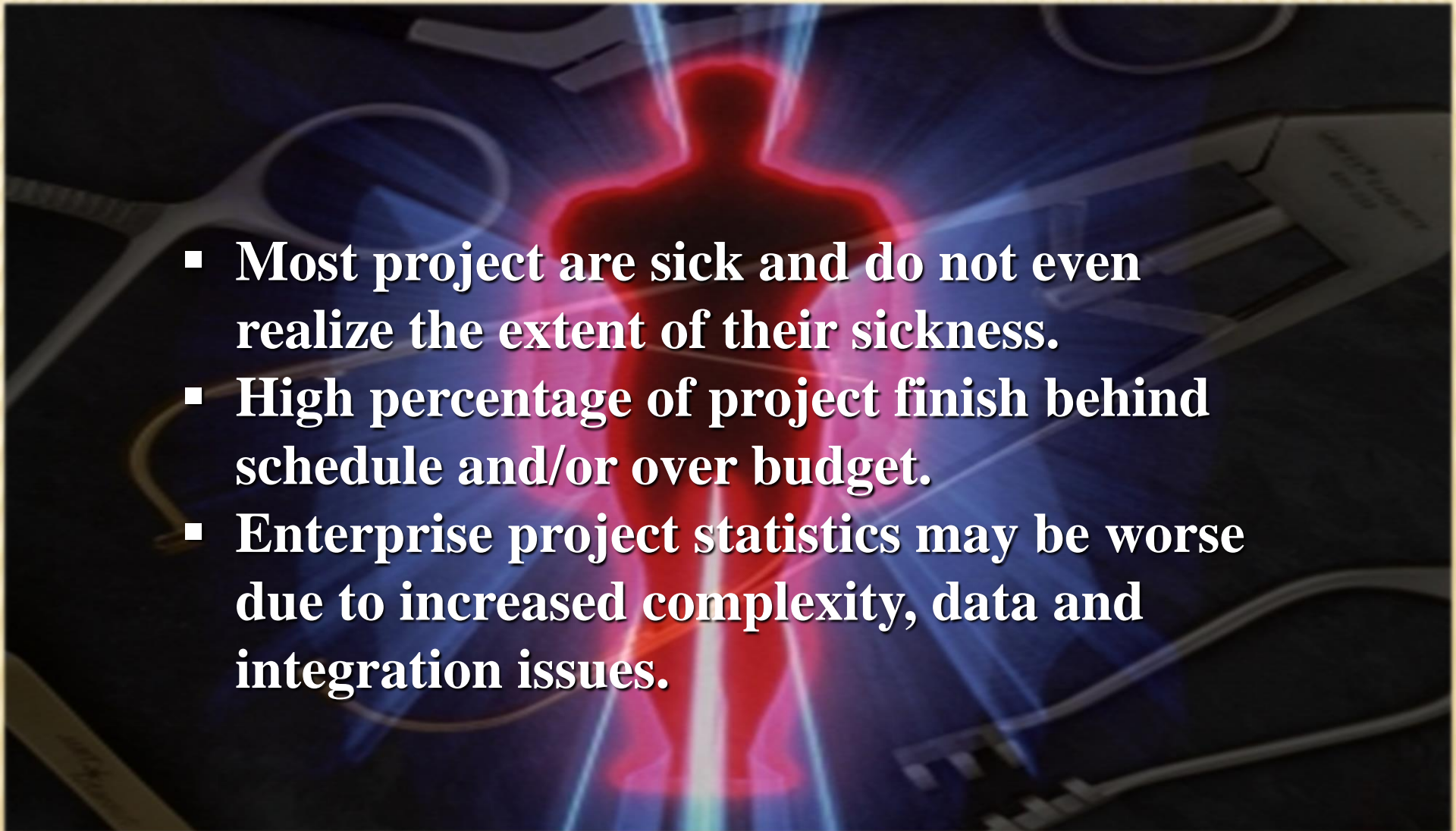
# PLANNING

Planning provides the **MAP**  
... to **guide** you to where **you** and the  
**Project Team** want to go  
... and focuses on **how** to get there!!!



# PLANNING

Projects which are  
**planned early** in the Life Cycle,  
with contributions from stakeholders  
and team members,  
are **better** able to be **controlled** and  
**managed**

- 
- The background of the slide features a dark, abstract image with a central red silhouette of a person. The silhouette is surrounded by glowing blue and white lines that suggest a network or data flow. The overall aesthetic is high-tech and digital.
- Most project are sick and do not even realize the extent of their sickness.
  - High percentage of project finish behind schedule and/or over budget.
  - Enterprise project statistics may be worse due to increased complexity, data and integration issues.

# BENEFITS OF PHC

- Reducing the risk of project failing
- Improve quality of project
- Early warning detection and recovery development
- Adequacy assessment to project control, monitoring and reporting
- Faulty rectification
- To minimize the deviant of project from the course



# What is *PROJECT HEALTH CHECK ?*

# Project Health Check

- An **independent check** of the status of the project **at any time**
- Will **identify assistance required** by some projects
- Can recommend **coaching and mentoring**
- Can recommend deeper level of **intervention**
- It is also an opportunity to formally recognize **good project managers**

**SCOPE**



**TIME**



**COST**



**QUALITY**



**RESOURCE**



**HANDOVER**



**ROLES & RESPONSIBILITY**



**DOCUMENTATION**



**TRAINING**



**EMP**



**SAFETY & HEALTH**



**INTEGRATION**



**PROCUREMENT**



**RISKS**



**COMMUNICATION**



**Health Check test  
Your Project's vital signs**



# When to conduct **PROJECT HEALTH CHECK ?**

# When & How often to use PHC?

- The process can be applied **at any point** in the project life cycle;
- There would be advantages in **undertaking a Health Check early** in the life of a project;
- It is probably best **applied prior to** a project **handover or** at the commencement of a **new project phase**;
- It is suggested that a maximum of **4 Health Checks** in the life a 2 -3 year project would be adequate;

# PHC Practitioner visit & report

- ✱ Will determine condition of the project
- ✱ Will identify areas of concern
- ✱ Will recommend a course of action, but.....
- ✱ Is not the solution to project issues

*The responsibility for action remains with  
the Project Manager*

# Diagnosis

- **Healthy**
  - Project is performing to specification
- **Observation**
  - looks OK but some aspects need to be monitored
- **Serious Condition**
  - immediate action to resuscitate (Green Team)
- **Critical Condition**
  - probably beyond recovery (Red Team)



Who conduct  
***PROJECT HEALTH  
CHECK ?***

## •Project Health Check Practitioner

- **An individual with strong competencies in project management;**
- **Preferably Certified as a registered Project Manager (Min Level 5 Registered PM) or a least > Grade J48 to **leads** the Health Check Team.**

Note that.....

**PHC is strictly not AUDITING  
Process**

# How does this differ from an AUDIT

- ✿ It is not about **compliance** – it is about **project performance**;
- ✿ It is not about **criticism**, its about **facilitating** better outcomes;
- ✿ It looks at the **current status** and tests the potential;
- ✿ It increases awareness of good **PM practices**;
- ✿ It is **about the project** not the individuals;
- ✿ It is not about a lengthy process – its in and out in about 2 hours;
- ✿ It is a process a Project Manager should welcomes as **performance benchmark**.

# Project Health Check

Example of Template

Microsoft Excel - PPHC-Q-040407 (Sg Udang).xls

File Edit View Insert Format Tools Data Window Help Justify Adobe PDF Type a question for help

R56

	A	B	C	D	E	F	G	H	I	J	K	LM	N	O	P	Q
55																
56							1	2	3	4	5		Observations and Comments			
57																
58																
59																
60																
61																
62																
63																
64							#DIV/0!	#DIV/0!								
65																
66																
67							1	2	3	4	5		Observations and Comments			
68																
69																
70																
71																
72																
73																
74																
75																

Average Cost score #DIV/0! #DIV/0!

Subtotal Cost score

Check!

Please answer all question

Quality

32 There is a quality plan in place.

33 Deliverables are subject to a quality plan.

34 Remedial and corrective actions have been taken.

35 Standards and procedures for product technical performance of the project have been included in the detailed requirements.

36 The construction test plans are realistic (test strategy, test plan and test cases in place).

37 There is a tracking system for requirements and changes to requirements.

Average Quality score #DIV/0! #DIV/0!

Subtotal Quality score

Check!

Cover and User manuals / Introduction / Process Flow / Project Detail / Project Health (

Ready

NUM

Microsoft Excel - PPHC-Q-040407 (Sg Udang).xls

File Edit View Insert Format Tools Data Window Help Justify Adobe PDF

Type a question for help

75% Arial 9 B I U

Reply with Changes... End Review...

T178

	A	B	C	D	E	F	G	H	I	J	K	L	M	N	O	P	Q
55																	
56							1	2	3	4	5			Observations and Comments			
57				26	The project costs are under control according to the budget.					x							
58				27	There is a cost tracking system in place.					x							
59				28	All project costs are being managed.					x							
60				29	The cost tracking is up to date.					x							
61				30	Cost projections are in place for the completion of the project.					x							
62				31	All cost variances have been approved in writing.					x							
63																	
64					Average Cost score		4.0	Good									
65					Subtotal Cost score						24						
66																	
67					Quality		1	2	3	4	5			Observations and Comments			
68				32	There is a quality plan in place.					x							
69				33	Deliverables are subject to a quality plan.					x							
70				34	Remedial and corrective actions have been taken.					x							
71				35	Standards and procedures for product technical performance of the project have been included in the detailed requirements.					x							
72				36	The construction test plans are realistic (test strategy, test plan and test cases in place).					x							
73				37	There is a tracking system for requirements and changes to requirements.				x					System is in place; to improve the tracking system.			
74																	
75					Average Quality score		3.8	Good									
					Subtotal Quality score						22						

Cover and User manuals / Introduction / Process Flow / Project Detail / Project Health (

Ready

NUM

Microsoft Excel - PHC Questionnaire Revision3\_150507.xls

File Edit View Insert Format Tools Data Window Help Justify Adobe PDF Type a question for help

85% Arial 9 B I U %

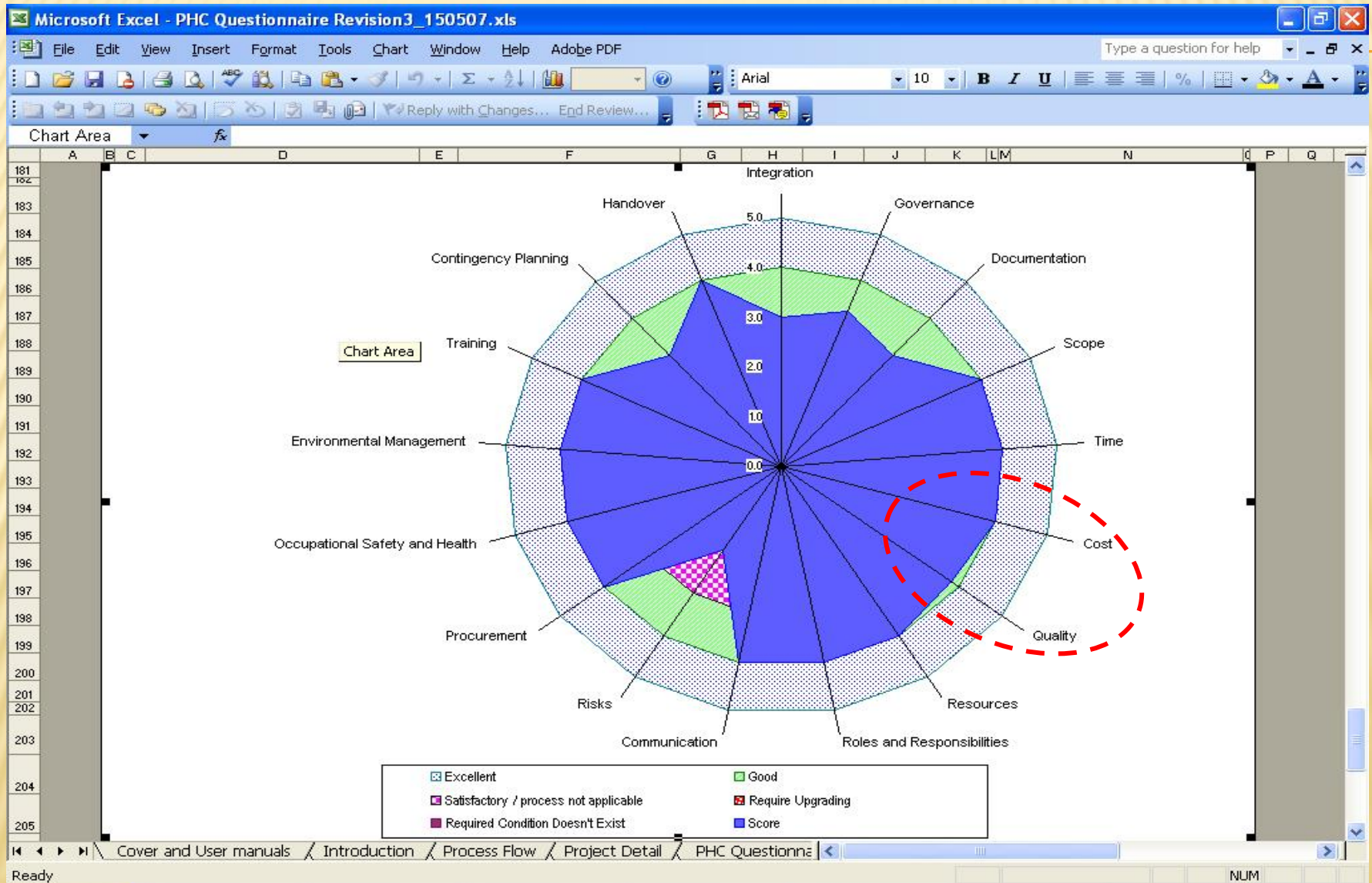
Reply with Changes... End Review...

O166

B	C	D	E	F	G	H	I	J	K	L	M	N
166		Average Handover score		4.0	Good							
167		Subtotal Handover score					16					
168	78											
169	<b>Diagnosis</b>											
170	Indicates that JKR / the project team has well developed process and effective project management capabilities and resources in place.						312	to	390	HEALTHY		
171	Suggests that JKR / the project team takes project management seriously but may need to review areas of weakness.						234	to	312	OBSERVATION		
172	Indicates that JKR / the project team are not applying well developed processes and effective project management capabilities and resources. Successes are more likely due to chance than co-ordinated effectiveness.						156	to	234	ILL		
173	Shows clearly that there are serious deficiencies in the application on best project management practices and project failure against key JKR success parameters is most probable.						78	to	156	CRITICAL		
174	<i>Adapted from the 'Project Implementation Profile' - J. Pinto &amp; D. Slavin</i>											
175	<b>SUMMARY</b>											
176	Project											
177												
178	Total Score										276	
179												
180	Suggests that JKR / the project team takes project management seriously but may need to review areas of weakness.											
181												
182												
183	Average subject		Score	Comment								
184	1 Integration		3.0	Satisfactory / process not applicable		5.0						

Cover and User manuals / Introduction / Process Flow / Project Detail / PHC Questionnaire

Ready NUM



Microsoft Excel - PHC Questionnaire Revision3\_150507.xls

File Edit View Insert Format Tools Data Window Help Justify Adobe PDF

Type a question for help

80% Arial Narrow 10 B I U

H25 =Project Health Check Q Template!F195

## PROJECT HEALTH CHECK

**PROJECT:**

Total Score for Project **276**

**Diagnosis**

*Suggests that JKR / the project team takes project management seriously but may need to review areas of weakness.*

	Project Areas	Score	Remarks
1	Integration	3.0	Satisfactory / process not applicable
2	Governance	3.3	Good
3	Documentation	3.0	Satisfactory / process not applicable
4	Scope	4.0	Good
5	Time	4.0	Good
6	Cost	4.0	Good
7	Quality	3.8	Good
8	Resources	4.0	Good
9	Roles and Responsibilities	4.0	Good
10	Communication	4.0	Good
11	Risks	2.0	Requires upgrading
12	Procurement	4.0	Good
13	Occupational Safety and Health	4.0	Good
14	Environmental Management	4.0	Good
15	Training	4.0	Good
16	Contingency Planning	3.0	Satisfactory / process not applicable
17	Handover	4.0	Good

**Overall Score** Evaluate Your Score

312	to	390	Indicates that JKR / the project team has well developed process and effective project management capabilities and resources in place.
234	to	312	Suggests that JKR / the project team takes project management seriously but may need to review areas of weakness.

## PROJECT HEALTH CHECK SUMMARY

*A short summary report identifying the project strength and areas requiring improvement*

### A. PROJECT STRENGTH

The project shows strength in the following areas

- Scope management
- Time management
- Cost Control
- Resource Management
- Roles and Responsibility Management
- Communication
- Procurement Control
- OSH and Environmental management preparation

### B. AREAS REQUIRING IMPROVEMENT

Project Risk, Integration, Documentation and Contingency Planning have rooms for improvement

The project Management team can improve these areas by their own initiative or they can get some advise from Prokom Green team who can provide on the job coaching.

### C. ACTION PLAN

*An action plan jointly developed by the health checker and the Project Manager*

Areas for improvement	Action to be taken	Action by	Start & End dates
RISK	Risk workshop		
INTEGRATION	Project management course in PMBok		
CONTINGENCY PLANNING			
DOCUMENTATION			

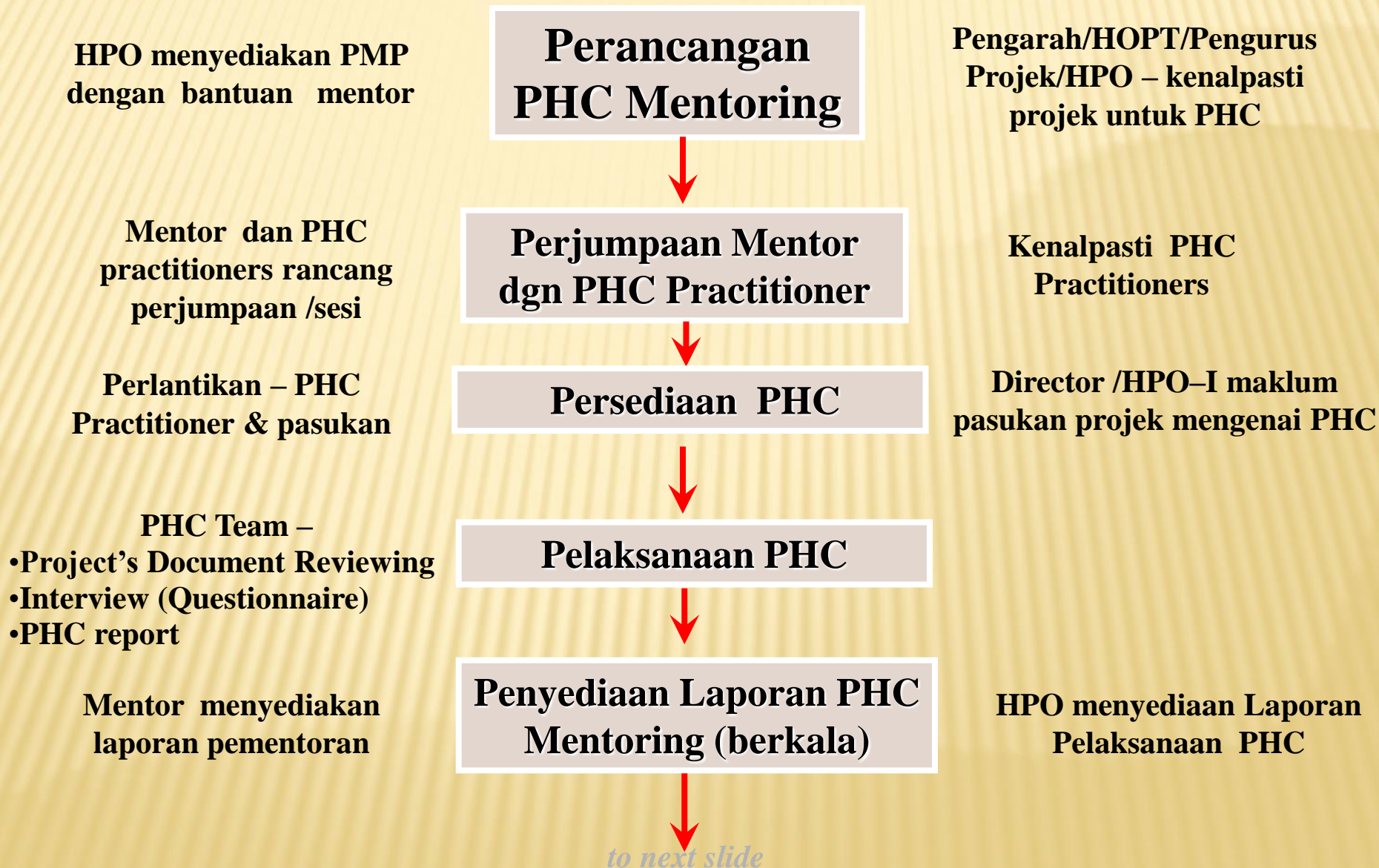
PHC Questionnaire-Pre Con Project Health Check Q Template Summary Report

Ready NUM

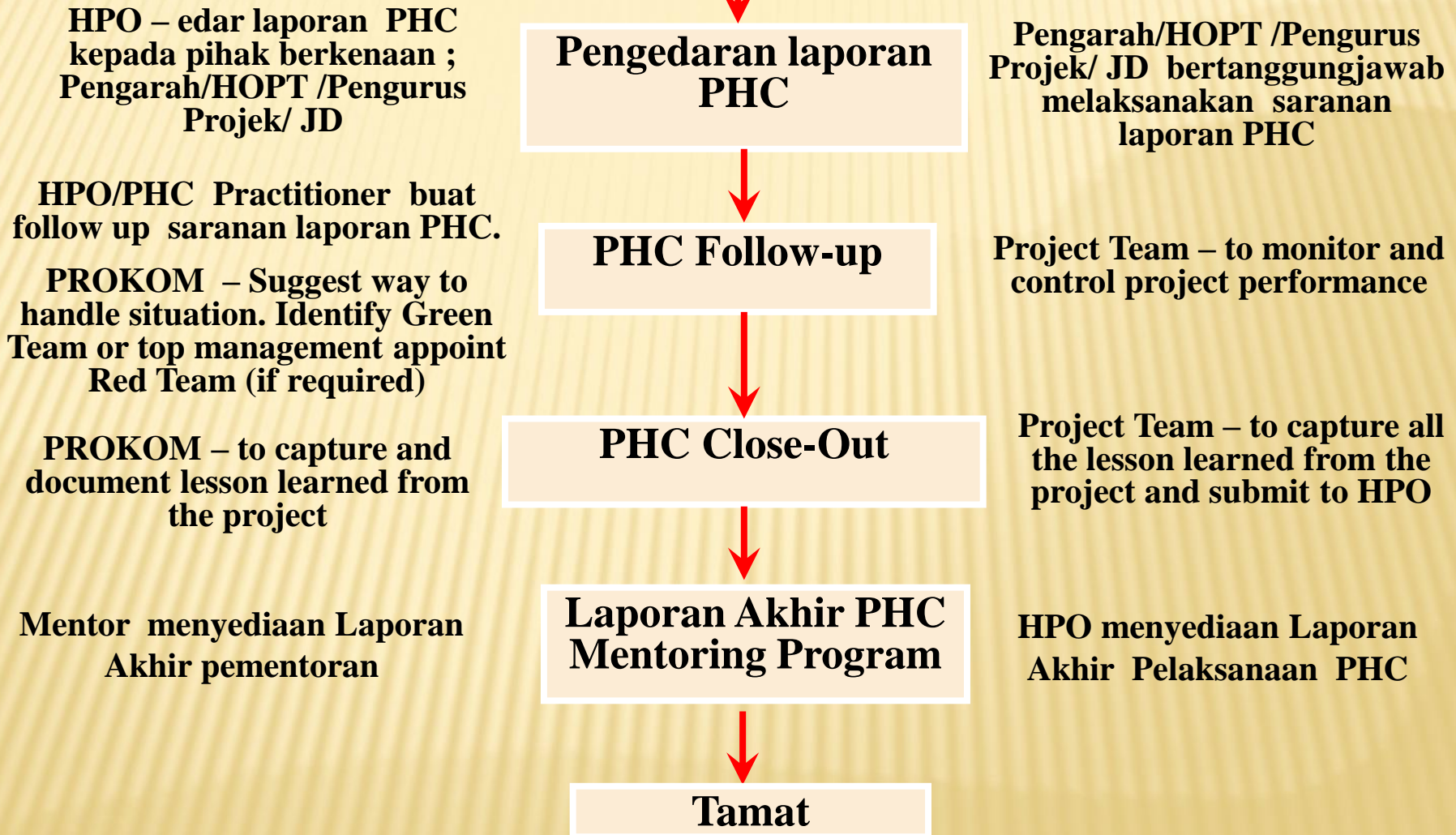
# Project Health Check

JKR's Project Health Check Procedure

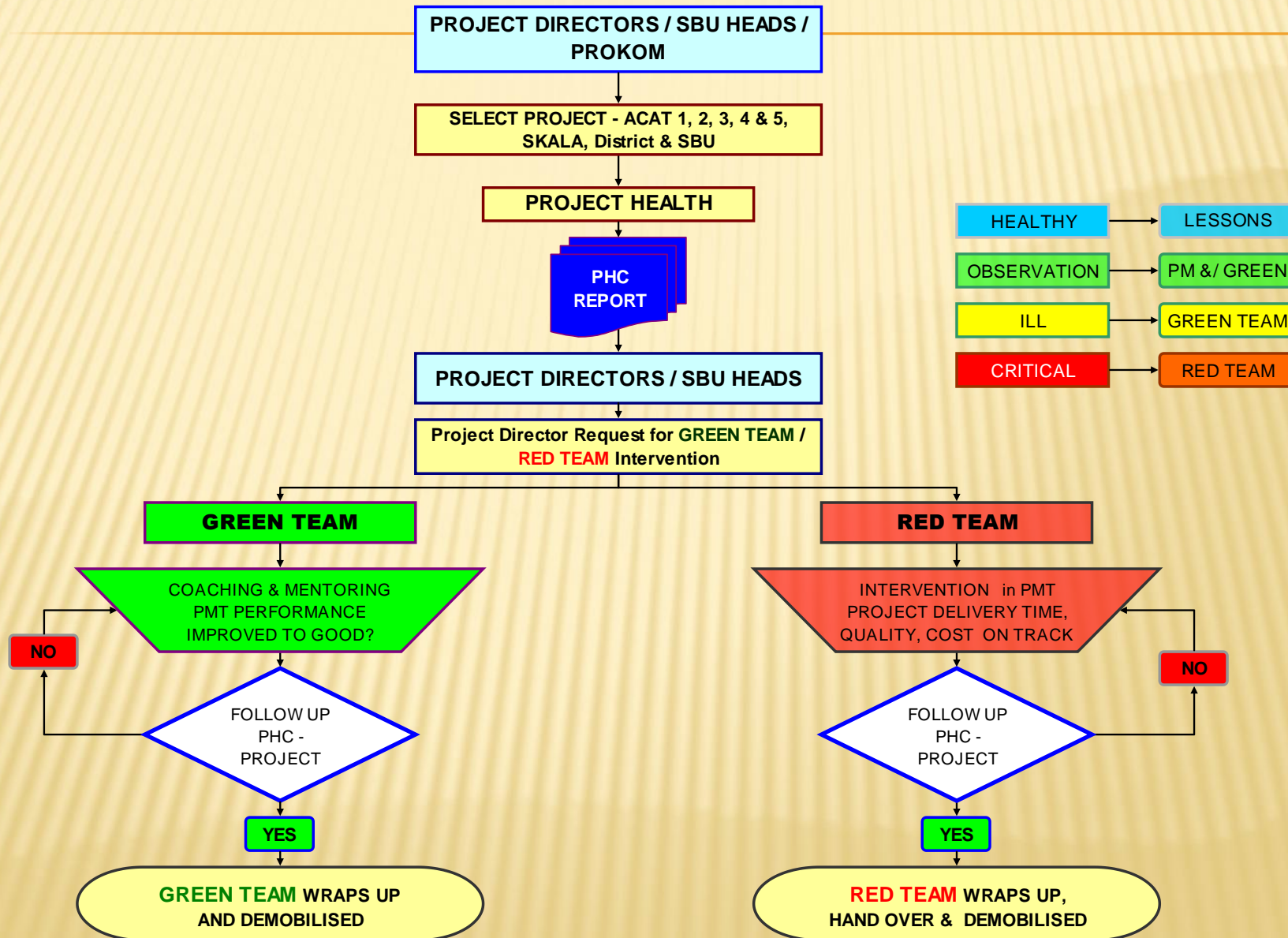
# Prosedur



*from previous slide*



# PROJECT HEALTH CHECK & GREEN TEAM AND RED TEAM



# Possible Recommendations

- ✱ Observation – some remedial treatments to be applied and a further review in 3 months.
- ✱ Increased Resources – specific enhancement necessary to realign the project;
- ✱ **Green Team** intervention – systems in place but not being properly applied - coaching & mentoring for project participants
- ✱ **Red Team** Interventions – project is out of control, no consistent application of procedures, competencies necessary not available;

## *Green Team*

- The Coaching/Mentoring Unit appointed by PROKOM which assists in the promotion of effective use of standard project management practices and tools by all JKR project managers.
- They react to requests for assistance by JKR project managers, or by referral from the Project Practitioner

## ***Red Team***

- ✦ A small team of highly experienced people who respond to a project with major problems,
- ✦ Would be expected to apply radical solutions including changes of project personnel.
- ✦ The Red Team will those appointed by JKR Top Management.



terima kasih