

ORION



PACKING LIST

TP	SIZE	FINISH	THICKNESS (MM)	PCS/AZ	PCS/CTN	CTN/PLT	PLT/20'FCL	AVG WEIGHT/CTN (KG)	AVG WEIGHT/PLT (KG)
	60x60cm	NATURAL	9.7	2.78	4	32	20	32.40	1,062

TECHNICAL
PORCELAIN

Note: Pallet Size is 1.125 x 0.925m. 1x 20'FCL max. weight is 21.5 metric tonnes. Packing List is to be used as a guide only. Actual weight will be based on shipment packing list.



WALL



FLOOR



INDOOR



OUTDOOR



FROST
RESISTANT



VARIATION



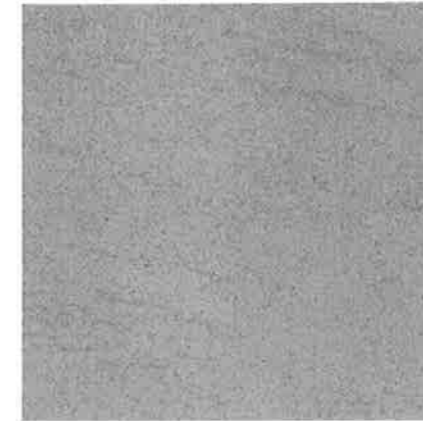
QUALITY. GUARANTEED.


ORION



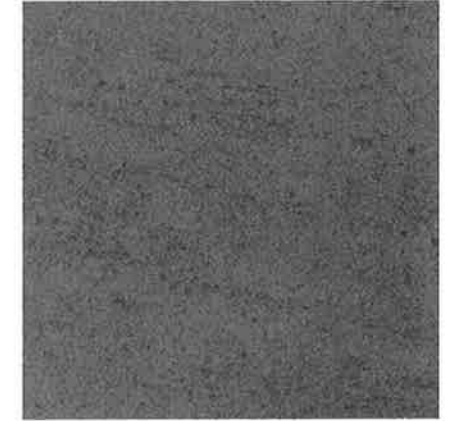
ORION

ICE GREY SD60



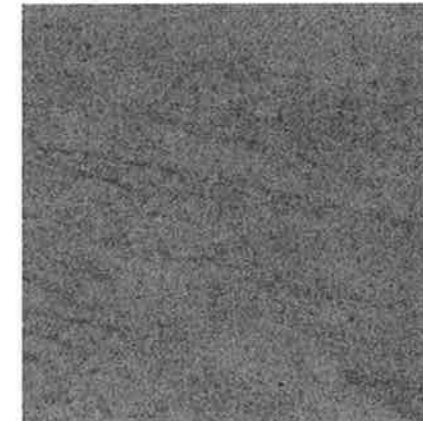
60x60cm

COOL GREY SD61



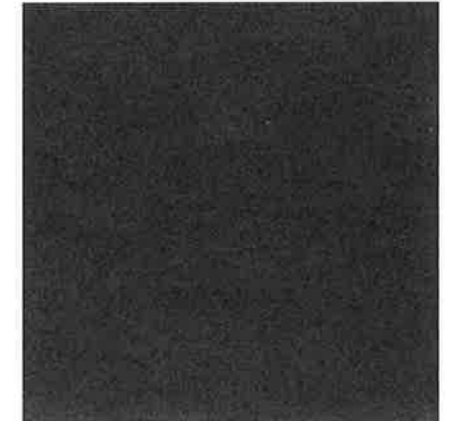
60x60cm

ASH GREY SD62



60x60cm

CARBON GREY SD63



60x60cm