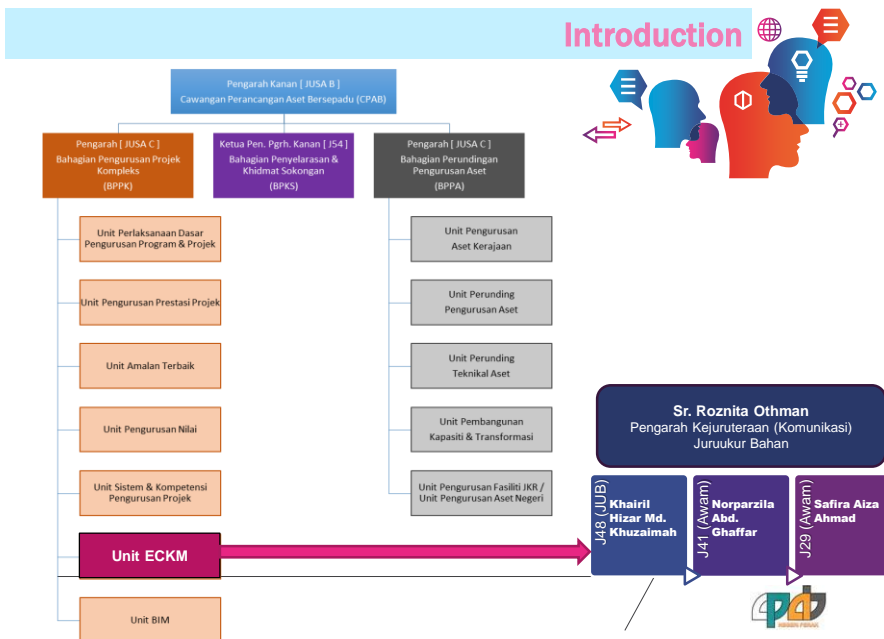


BENGKEL JPEDIA  
23 NOVEMBER 2016

# INTRODUCTION TO ENTERPRISE CONTENT AND KNOWLEDGE MANAGEMENT

KHAIRIL HIZAR MD KHUZAIMAH  
UNIT ENTERPRISE CONTENT  
& KNOWLEDGE MANAGEMENT, CPAB





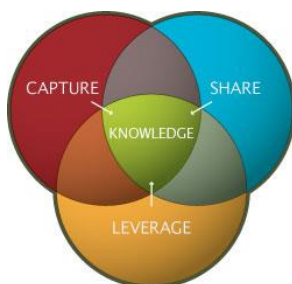
# SILOS result in

## lack of trust, limited communication and isolation



<http://www.chrisernst.org/why-boundary-spanning-networks/activate-the-network/>

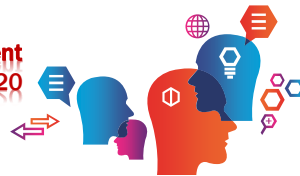
## How KM can improve the organisational performance



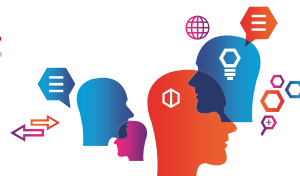
- Easy to find experienced individuals
- Enterprise wide knowledge at our finger tips
- Improve productivity by reusing "what we know"
- Improve communication and break down silos
- Generate new ideas that can be incorporated into innovative products and processes



## KM is a KEY component in JKR Strategic Framework 2016-2020



## ISO 9001:2015 - Clause 7.1.6

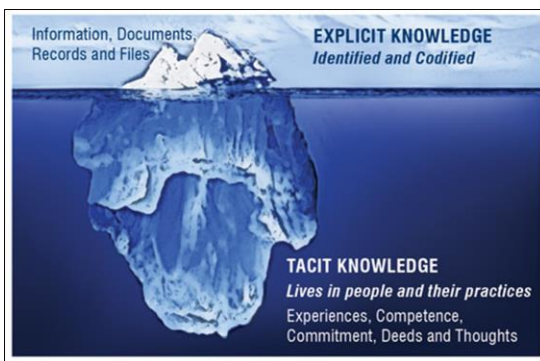


Organisations need to determine and manage its knowledge to ensure the operation of its processes and that it can achieve **conformity of products and services**

## Our Knowledge Assets



## Types of Knowledge



20%

USE IT OR  
LOSE IT

80%

**GIVING THE BEST KNOWLEDGE TO THE RIGHT PEOPLE AT THE RIGHT TIME**  
WILL NOT ONLY  
PROVIDE PERFORMANCE SUPPORT FOR EMPLOYEES TO DO  
THEIR JOB MORE EFFICIENTLY AND EFFECTIVELY BUT WILL  
ALSO ENHANCE THE INNOVATION CAPACITY OF THE  
DEPARTMENT





## The KM Agenda

*To cultivate **knowledge sharing and learning culture** across department through the use of proven **effective knowledge sharing tools***

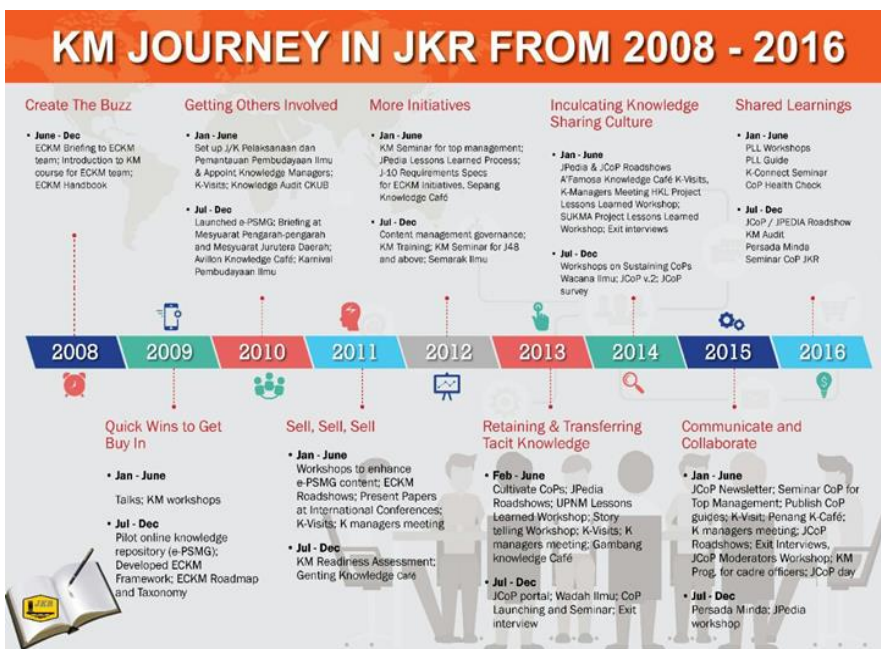


### MAJOR KM INITIATIVES (since 2008)

- 1 **JPedia**, an online repository to share knowledge-in-context)
- 2 **Communities of Practice** to share domains of knowledge
- 3 **JCoP**, an online platform to ask and discuss
- 4 **Project Lessons Learned System** to share key project learnings
- 5 **KM Toolbox**, set of tools and techniques to capture and share insights and ideas
- 6 **JKR Yellow Pages** to locate experts within the department
- 7 **E-Learning** to provide 24 x 7 learning environment



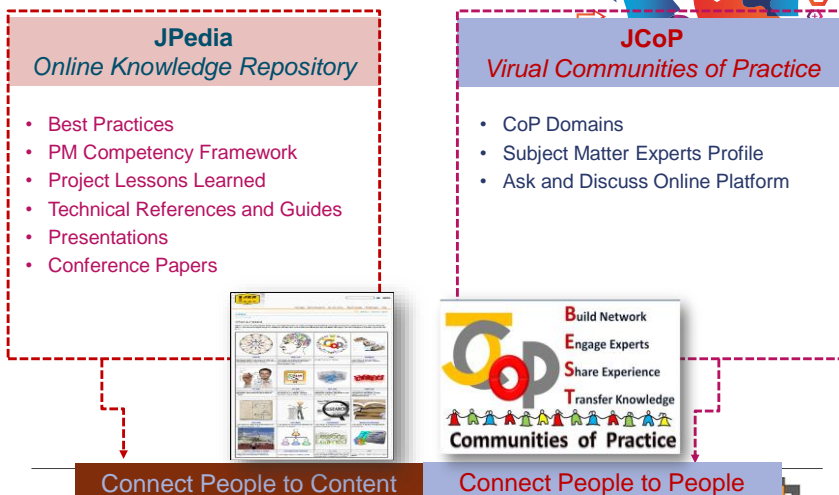




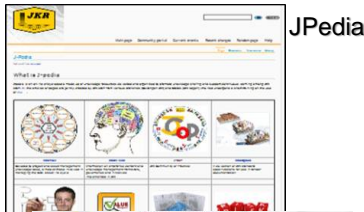
## THE COMMUNITIES OF PRACTICE ACROSS THE WORLD



## JKR KM Online Tools







JPedia

JCOP

Connecting People – The BEST Way

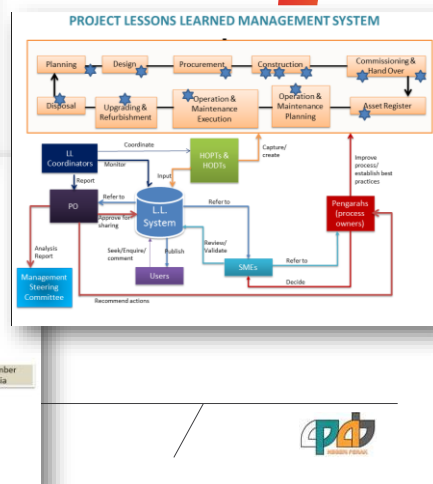
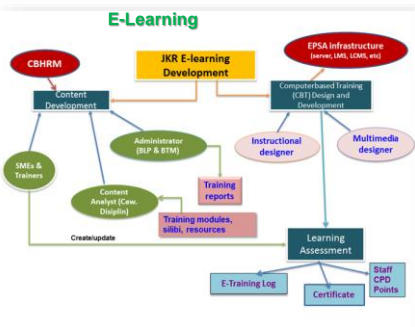


**Share Explicit Knowledge**

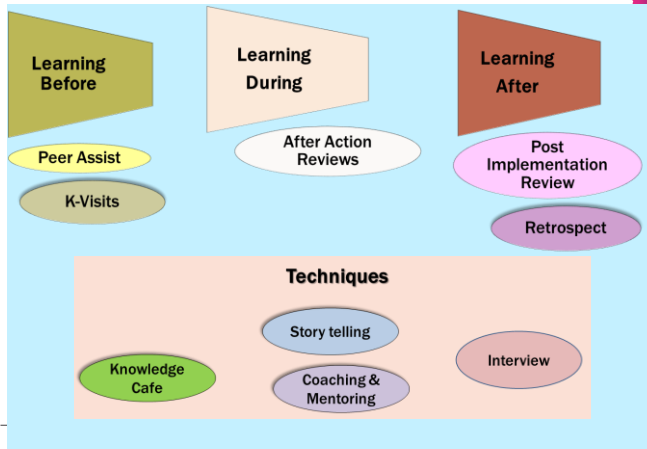
Hand auger is very simple hand tool used for drilling into soft soils down to a maximum depth of 1.5m. A different steel auger (bit) can be attached at the bottom end of the drill rod. It is emptied. A different auger can be used for each formation (soil) type. Hand augering is used to drill a borehole for a permanent casing or a bailer. The permanent well casing is then installed in the borehole. The borehole generally stays open without the need for support. Above the water table, the borehole generally stays open without the need for support. The borehole can be emptied either with an auger or a bailer. The permanent well casing is then installed in the borehole as the permanent casing (direct installation), although in the soft soil clay.



**Share Tacit Knowledge**

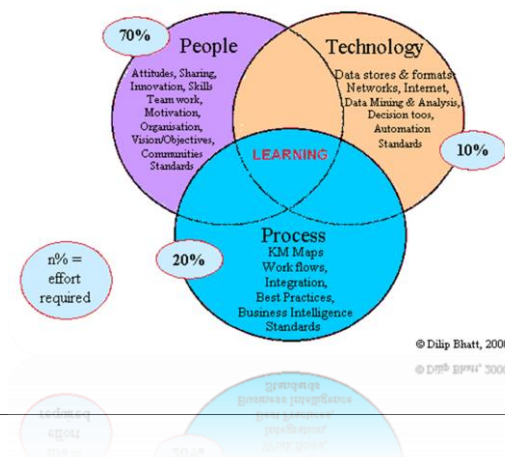


## Tools to capture/harvest Knowledge



## Conclusion

### Knowledge Components



Thank you for your attention



Mobile – 016 311 7704  
hizar@jkr.gov.my

