

Fixing

AAC Panel Product & Installation Details

Step 1

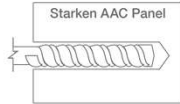


Use correct type of nylon (Low & Medium weight duty) anchor and size

*For heavy duty use epoxy grout

*Do not use metal anchors

Step 2



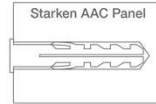
Drill hole to correct size and depth (Allowance shall be made for backing plates or shims).

Use electrical drill with steel drill bit.

Set the drill to standard setting.

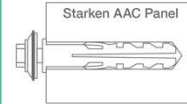
*Do not use impact setting
*Do not use concrete drill bit
*Do not oversize the hole

Step 3



Clean the hole of any loose materials or dusts.
Insert anchor into hole.

Step 4



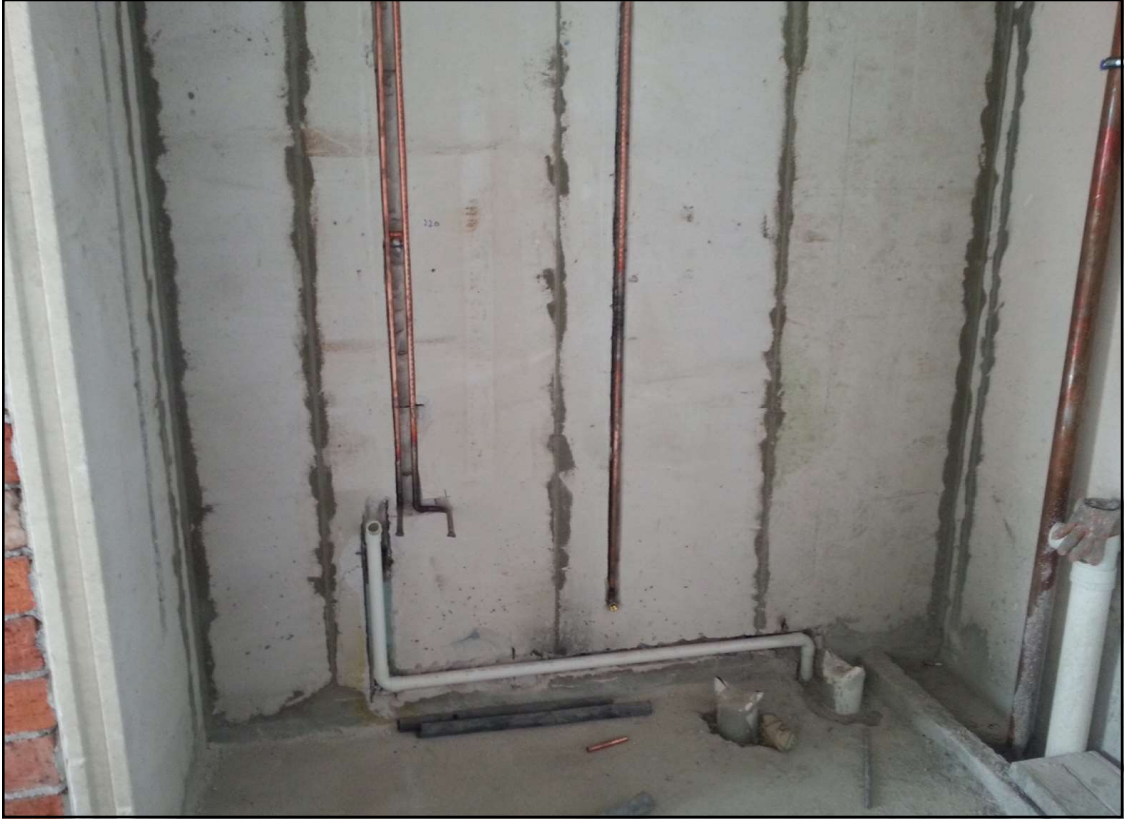
Position fixture/equipment then insert steel bolt/ screw and tighten.















STARKEN AAC WALL PANEL PROJECTS

STARKEN AAC PANEL PROJECT REFERENCE				
PROJECT	LOCATION	COUNTRY	APPROXIMATE AREA (M2)	STATUS
Borneo Motor Workshop	Pandan Crescent	SINGAPORE	8,000	Completed in Jan 2016
Google Data Centre	Jurong West	SINGAPORE	30,000	Completed in July 2016
Commercial Building	Upper Serangoon Road	SINGAPORE	10,000	Completed in April 2016
Warehouse building	Tuas South Street 15	SINGAPORE	10,000	Completed in May 2016
Data Centre	Pioneer Road	SINGAPORE	8,000	Completed in July 2016
Warehouse building	Jalan Buroh	SINGAPORE	20,000	Completed in Nov 2016
Food Hub Building	Senoko Drive	SINGAPORE	10,000	Completed in Oct 2016
Nee Soon Camp	Mandai Avenue	SINGAPORE	70,000	Supply in Progress
Kranji Camp	Lorong Kebasi	SINGAPORE	20,000	Supply in Progress
Industrial Building	Tampines Industrial Drive	SINGAPORE	12,000	Supply in Progress
Industrial Building	Tagore Avenue	SINGAPORE	8,000	Supply in Progress
High Park	Sengkang West Way	SINGAPORE	8,000	Supply in Progress
Residential High Rise	KL Eco City	KUALA LUMPUR	12,000	Supply in Progress
Residential High Rise	The Straits Johor	JOHOR	10,000	Supply in Progress

SETIA ECOHILL - SATORI VILLA



SETIA TROPIKA - JOHOR



SUMITOMO WAREHOUSE AT SINGAPORE



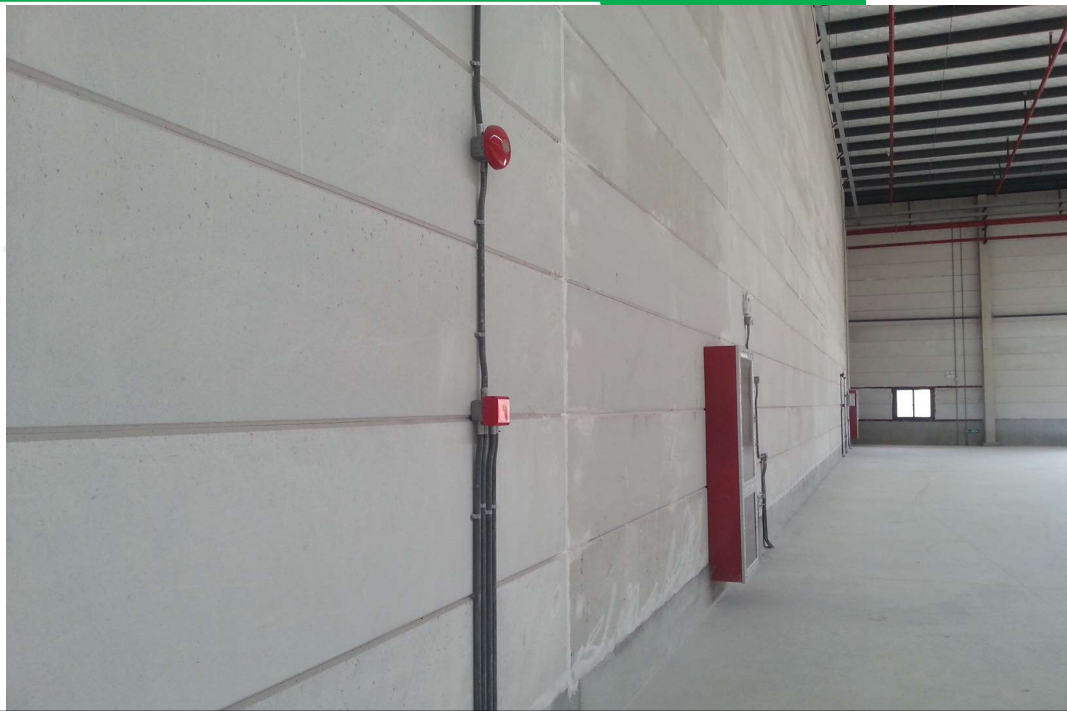
SUMITOMO WAREHOUSE AT SINGAPORE



SUMITOMO WAREHOUSE AT SINGAPORE



SUMITOMO WAREHOUSE AT SINGAPORE



GOOGLE DATA CENTRE AT JURONG SINGAPORE



GOOGLE DATA CENTER @
SINGAPORE (JURONG)

**COMMERCIAL BUILDING AT
UPPER SERANGOON,**



**COMMERCIAL BUILDING AT
UPPER SERANGOON,**



