

DIRECTION FOR USE:



OPTION 1 BASIC

- Ensure surface is thoroughly spray with TPPS.

OPTION 2 PREMIUM

- One coat of TPPS based coat and one coat of TPPS.

OPTION 3 PREMIUM EX

- One coat of TPPS based coat, one coat of TPPS, and one coat of TPPS top coat



TPPS



DIPPING TEST:



24 HOURS DIPPING

Hardness and water resistant test.

RESULT

No detachment, blistering, wrinkling, or lifting and no colour change.



O.D. PAINTS SDN BHD
No. 41 & 43, Jalan TPP 5/17, Taman Perindustrian Puchong, Seksyen 5,
47160 Puchong, Selangor Darul Ehsan.
Tel: 603-8061 6101 (Hunting Line) Fax: 603-8061 4696
Email : odpaints@unifi.my Website: <http://www.odpaints.com>

2016
0001

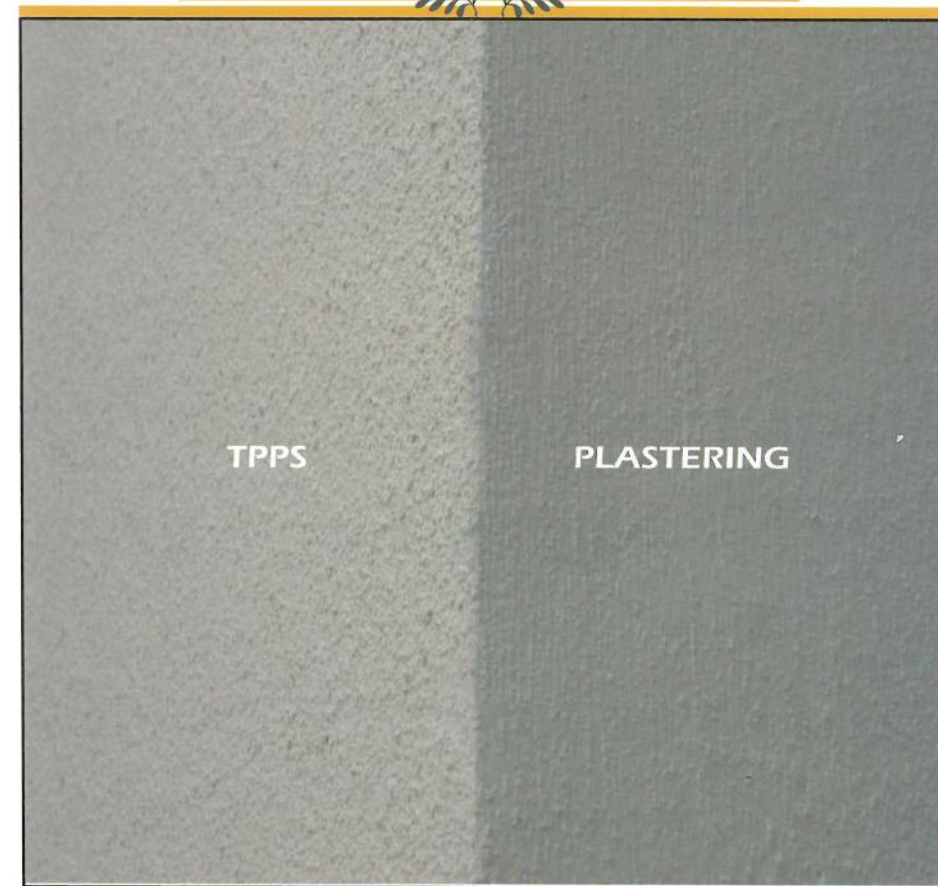
NEW

TPPS SYSTEM

total plastering ainting olution

Improve Plastering Consistency

COMPARISON



O.D. PAINTS SDN. BHD.
(217297-V)



It can take any angle without much hassle
(coping, right angle, gable end, round structure, etc).

PLASTERING



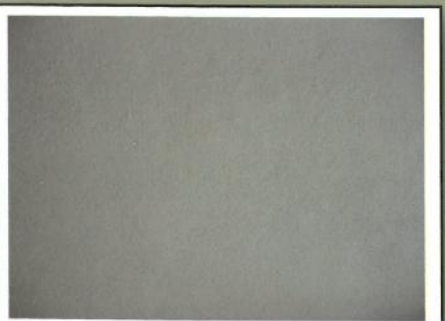
Mix' manually



Manually operated



Shoddy effect



Ready mix from factory

TPPS



Spraying mechanism



Improved Plastering consistency

Photographs of the exterior of the building reveal something

different and vary markedly in
their representation of the building;

Contrary to the initial
expectation of the clients

**Quality
of Work**

**Speed of
Work**

**Efficiency
of work**

A building has a life which is separate from whatever perspectives we may have of it. It exists simultaneously within and beyond the criteria of its intended users.

The realization of any architecture is through its construction. We are at an age where appropriate techniques of construction and design are available to us on demand. It can learn from and coexist with the traditional way in construction line.

Our proposal presents our firm's ability to make good your goal. The combination of these factors has created unprecedented conditions that are totally different from the conventional way of experience:-

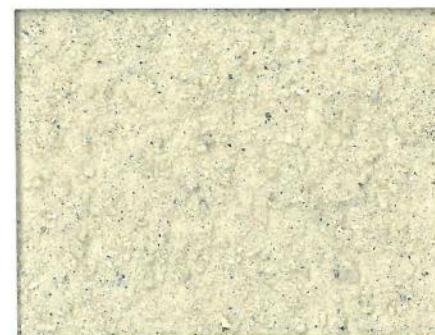
- :- QUALITY OF FINISHED PRODUCT
- :- SPEED OF WORK
- :- EFFICIENCY OF WORK
- :- CLEANLINESS AT SITE
- :- THE POTENTIAL FOR COST SAVINGS

Hence, in view of the advantages of the TPPS system, we are looking forward to the favorable reply from you and please do contact us for any presentation or further information or assistance. We are pleased to be of service to you.

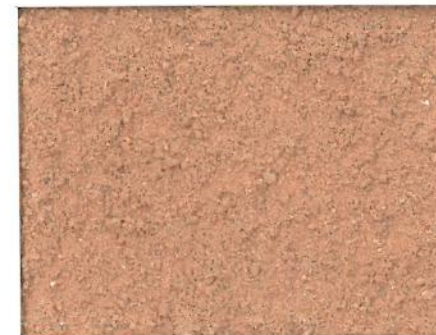


- In many cases experiencing rush mean contract period and quality.
- Since most of us are heading toward this direction naturally, it is impossible reaching that high standard without innovation such as:
- Excellent consistency to the exterior plastering.
- From the day TPPS system discover the speed and quality of work it has impressed the world of architecture.

SAMPLE AND COLOURS



TPPS T-100 NATURAL



TPPS T-10831 ORANGE



TPPS T-1188 TAMAN NEGARA



TPPS T-15800 RUBY



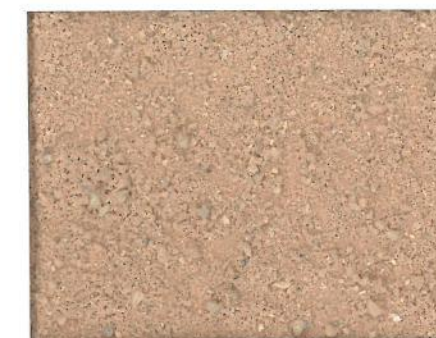
TPPS T-12129 TERRA COTTA



TPPS T-1181 APRICOT



TPPS T-13333 WIRA BLUE



TPPS T-12338 MILANO LYCHEE



TPPS T-1134 GALAXY



TPPS T-10235 GRANITE



TPPS T-12136 BOUTIQUE



TPPS T-18310 CLAY

*The colour of actual materials may be slightly different from these catalogue

TECHNICAL DATA

TOTAL PLASTERING AND PAINTING SOLUTION (TPPS)

TPPS is an exterior total solution system for finishing product. It produce excellent consistent to exterior plastering and bare concrete surface .TPPS system is extremely strong, tough, weather and fungus resistant for 10 years. It is specially formulated to meet the demand for high quality plastering consistency. It is suitable for (bare concrete surface, plaster, asbestos and etc).

PHYSICAL DATA

Colour	According to the card
Gloss	Satin finish
Solid (by volume)	49%
Specific gravity	1.7 to 1.9
Flash point	None (Water or solvent)

RECOMMENDATION FOR USE

Formation	Close
Thickness, dry	1mm to 2mm
Theoretical spreading rate	
At recommended thickness	1 sq.m/litre
Drying time (guiding data at ambient condition)	
Dry to touch	60 min
Dry to recoat, min	6 hours
Dry to handle, min	12 hours
Application methods	Mortar gun
Guiding data for mortar spray gun	
Nozzle tip	7mm
Spray angle	65° to 80°
Thinner/cleaner	Water

SURFACE PREPARATION

New surface should be dry clean flat and sound. Old porous and or chalky surface should be brushed, cleaned and coat with TPPS system.

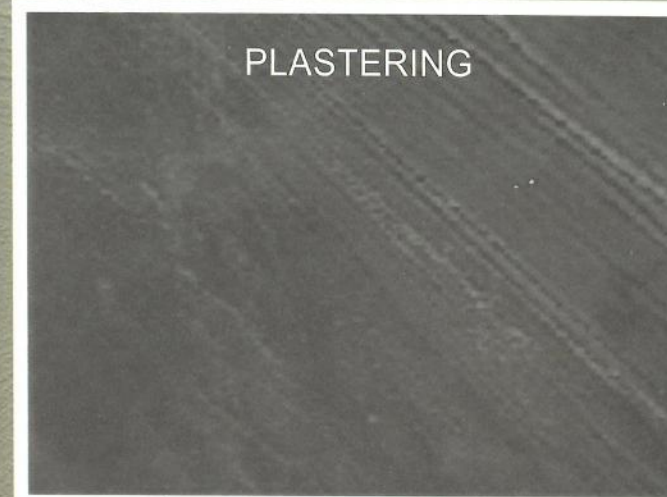
The above information is given to the best of our knowledge based on laboratory test and practical experience. However, as the coating is often used under the condition beyond our control, we cannot guarantee anything but the quality of the system itself.

We reserve the right to change the given data without notice

TPPS



PLASTERING



- Fast and easy working seamlessly with the TPPS is the accelerator to the project.
- It produces high volume and the result at the end of the day is excellent.
- Mechanically control it help the operator firmly control the quality and continue producing high quality performance.
- It also includes surface preparation (grinding 1mm to 2mm and top up) to meet the demand of the contemporary life style.
- Themost interesting part of TPPS is the mastering of the architectural finish. You can fine-tune the spraying machine by adjusting its pressure to produce excellent consistency and tough surface to resist impact.

Before



After



Before



After

