

# FINISHES OF LIFT AND FEATURES OF LIFT



# FINISHES OF LIFT

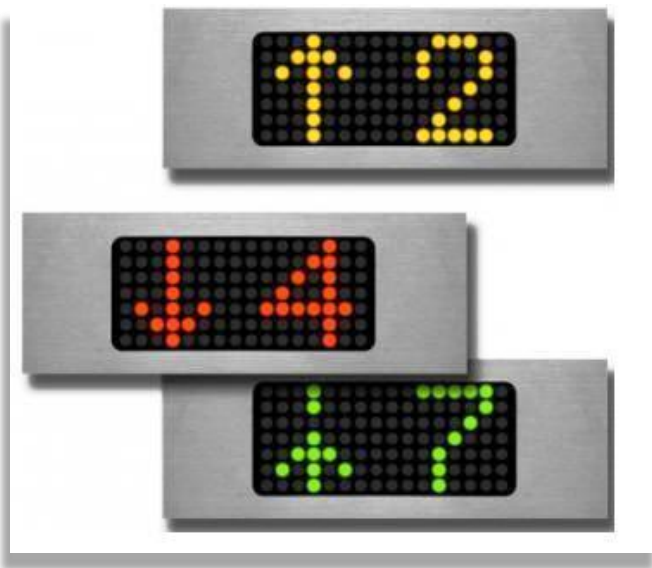


<i>Description For Finishes</i>	<i>JKR requirement (DESIGNERS CHOICE)</i>
<b><u>OPERATING PANELS</u></b>	
<u><i>Car Position Indicator Faceplate</i></u>	<u><i>S/Steel Hairline</i></u>
<u><i>Car Operating Panels Faceplate</i></u>	<u><i>S/Steel Hairline c/w perspec sheet</i></u>
<u><i>Hall Position Indicator Faceplate</i></u>	<i>S/Steel Hairline</i>
<u><i>Landing Operation Panel (Hall Call Button) Faceplate</i></u>	<i>S/Steel Hairline</i>
<u><i>Hall Lantern Faceplate (If Required)</i></u>	<u><i>S/Steel Hairline c/w (With or Without Dot Matrix Display)</i></u>

<i>Description For Finishes</i>	<i>JKR requirement (DESIGNERS CHOICE)</i>
<b><u>CAR AND CAR DOOR</u></b>	
<i><u>Side Enclosure</u></i>	<i>S/Steel Hairline/ <u>Rigidised Panel</u> / <u>S/Steel Etched Panel</u> / etc</i>
<i><u>Back Enclosure</u></i>	<i>S/Steel Hairline/ <u>Rigidised Panel</u> / <u>S/Steel Etched Panel</u> / etc</i>
<i><u>Departmental/Client's Logo</u></i>	<i>(At Landing Door Main Lobby &amp; Lift Car (Back Enclosure)</i>
<i><u>Entrance Column</u></i>	<i>S/Steel Hairline</i>
<i><u>Front Return Panel</u></i>	<i>S/Steel Hairline</i>
<i><u>Kick Plate</u></i>	<i>S/Steel Hairline</i>
<i><u>Flooring</u></i>	<i><u>Studded rubber tiles</u> / <u>Non-slip Vinyl tiles</u> / <u>Homogeneous Ceramic tiles</u> / <u>Glazed Tiles</u> / etc</i>
<i>Car Door</i>	<i>S/Steel Hairline/ <u>Rigidised Panel</u> / <u>S/Steel Etched Panel</u> / etc</i>
<i>Voice Synthesizer in Bahasa Malaysia</i>	<i>Required</i>
<i>Handrail</i>	<i>S/Steel Hairline / Brass / Wood / etc</i>
<i>Connection To Building PA System</i>	<i>Required</i>

<i>Description For Finishes</i>	<i>JKR requirement (DESIGNERS CHOICE)</i>
<b><u>HALL/LANDING ENTRANCES</u></b>	
<u>Landing Door</u>	<i>S/Steel Hairline/ Rigidised Panel /S/Steel Etched Panel / etc</i>
<u>Architraves</u> (min. 300 mm width) (only at Main Lobby)	<i>S/Steel Hairline/ Rigidised Panel /S/Steel Etched Panel / etc</i>
<u>Transom Panel</u> (if required)	<i>S/Steel Hairline/ Rigidised Panel /S/Steel Etched Panel / etc</i>
<b><u>OTHER FEATURES</u></b>	
<u>Car Ceiling</u>	<i>Coloured acrylic diffuser / suspended ceiling c/w downlight / etc</i>
<u>Car push/touch button</u>	<i>Braille/micro-movement push button with s/steel face plate</i>

# FINISHES OF LIFT





**HPI-570M**  
Hall Indicator

*Separate type full alphanumeric dot matrix display hall indicator with hairline stainless steel faceplate*

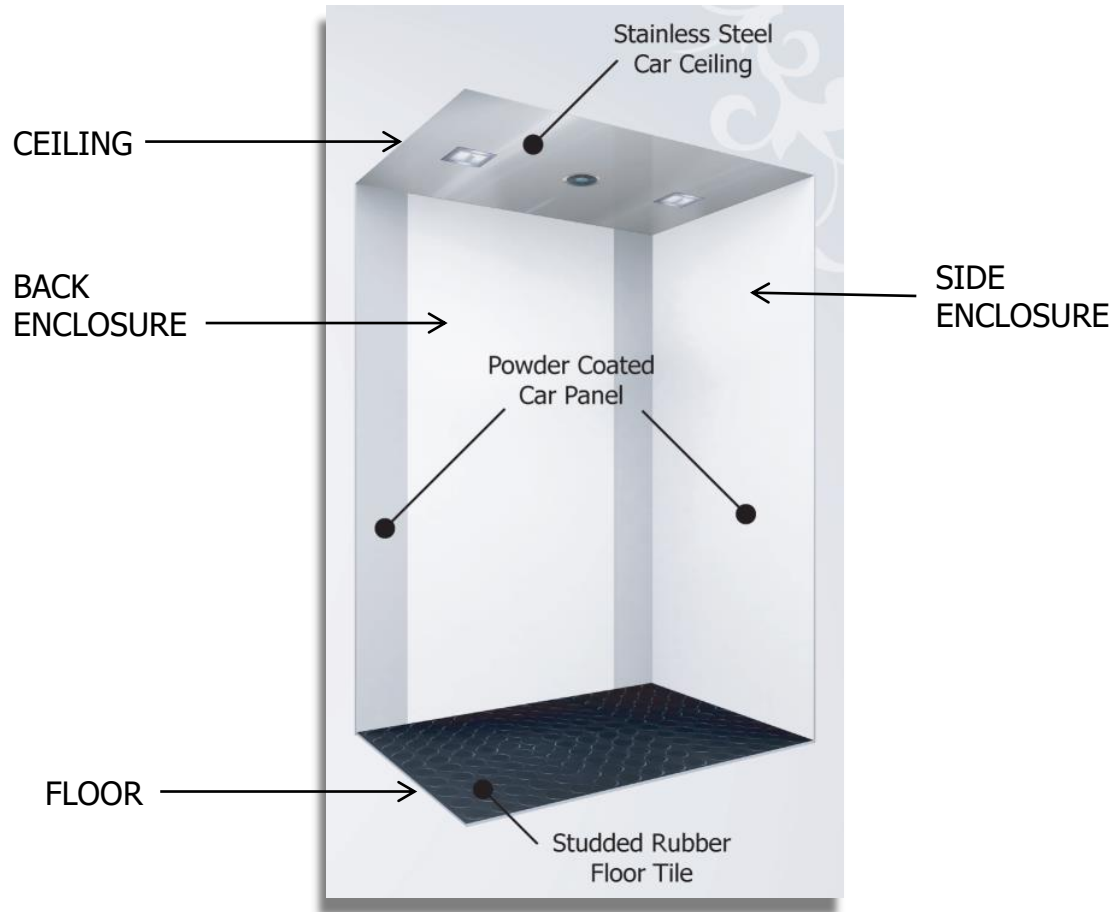


**HB-55M**  
Call Button

*Illuminated microstroke call button with hairline stainless steel faceplate*



# FINISHES OF LIFT

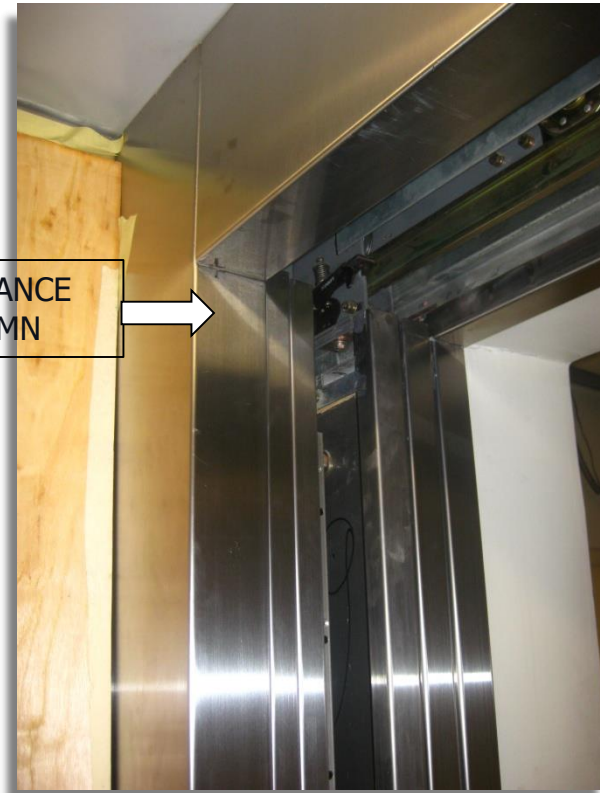


# FINISHES OF LIFT

FRONT  
RETURN  
PANEL



ENTRANCE  
COLUMN







Architraves



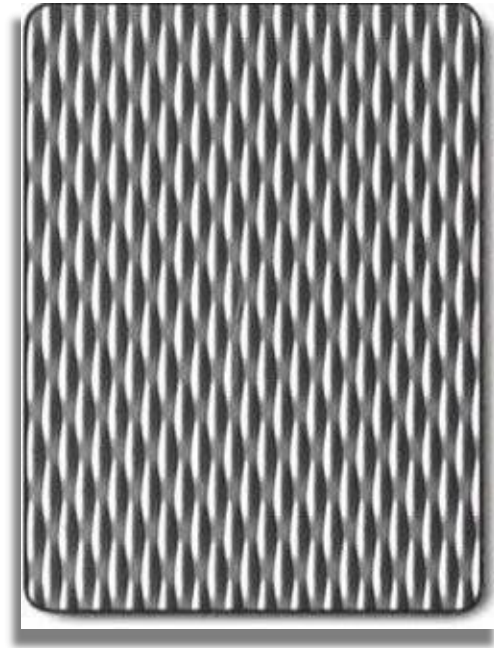
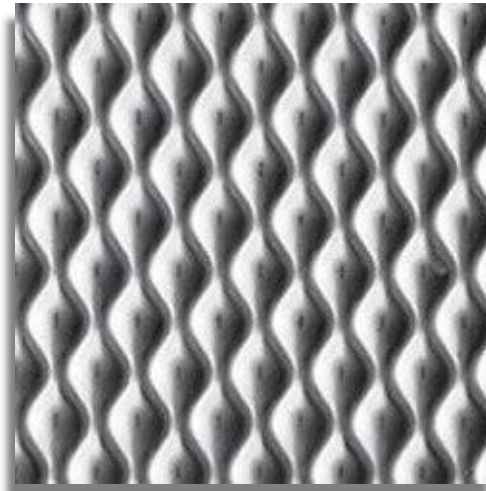
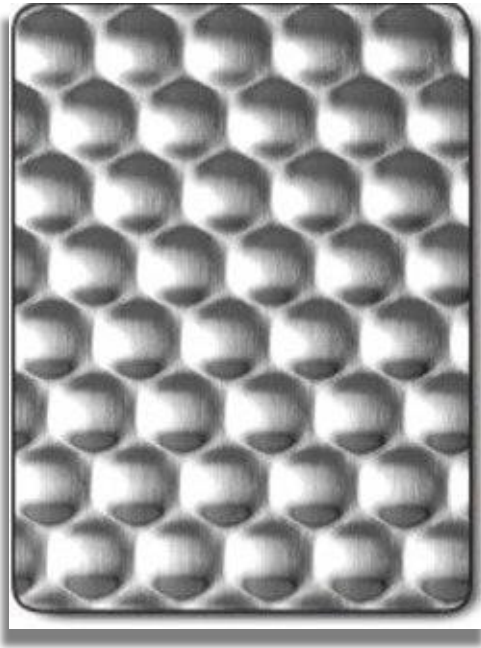
# FINISHES OF LIFT

Transom  
Panel

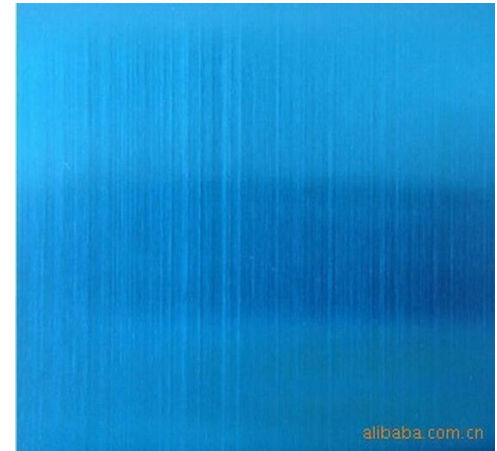
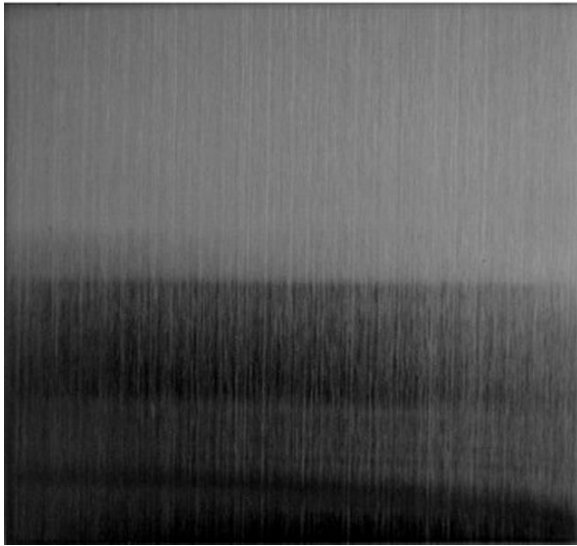
Door Jamb  
(wide/narrow)



## Stainless Steel Rigidized Finish



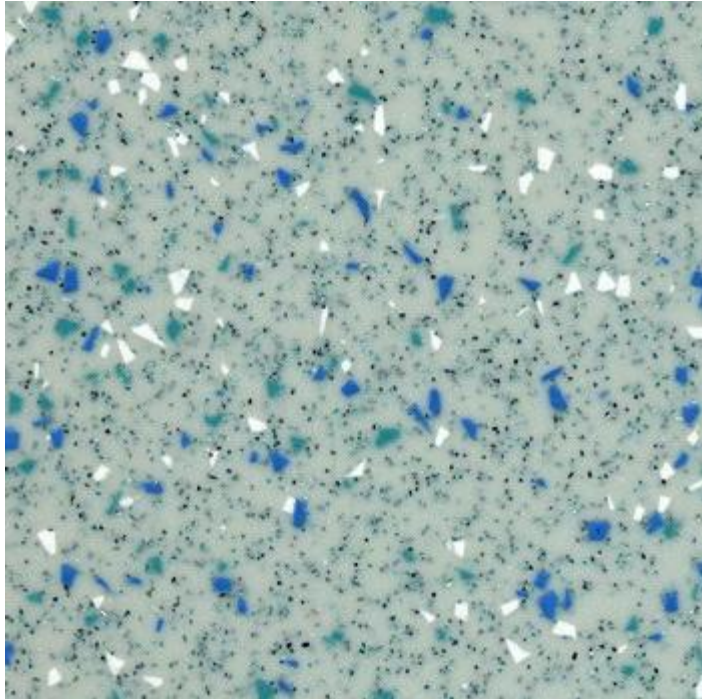
## Stainless Steel Hairline Finish



# Car Push Button c/w Braille Stainless Steel Faceplate



# Non-Slip Vinyl Tile



## Homogeneous Ceramic Tiles & Studded Rubber



## Glazed Tiles



## Departmental Logo



## Stainless Steel Etched Panel



# FEATURES OF LIFT



<i>Features of Lift</i>	<i>Description</i>
<i>Load weighing device / Load By-Pass</i>	<i>If the car load has <b>exceeded 80%</b> of the rated load or capacity of the elevator, the elevator will <b>automatically ignore all the hall calls</b> in the direction of service and respond car calls only. The hall calls remain registered and will be served on the next trip (single car), or by another elevator (group).</i>
<i>Limited door reversal Control</i>	<i>The limit is <b>150N</b>. When door sensor receive 150N force, the door reopens. Applicable to Electrical &amp; Mechanical Sensor.</i>
<i>Door nudging control</i>	<i><b>Mechanical door sensor.</b> When a stationary object is <b>blocking</b> the door, it reopens upon nudging.</i>
<i>Advance Door Opening (For High Speed Lift Only - 2.5 m/sec and above)</i>	<i><b>A system that allows car doors to start opening before the car is fully stopped on the landing.</b> Doors start opening when the elevator car is in the door zone and the speed has decreased below the limit allowed by the safety code.</i>
<i>Dual Tacho Feedback</i>	<i><b>Shaft Information.</b> The tacho gives <b>TWO</b> kind of feedback to the controller, 1) Speed &amp; Direction 2) Travel Distance. Location of Tacho can be at Car, Governor or Machine.</i>



<i>Features of Lift</i>	<i>Description</i>
<i>Automatic fan and light switch-off when idling more than two (2) minutes.</i>	<p><b><i>Energy Saving/Efficiency features.</i></b></p> <p><i>Elevators shall be installed with an energy saving feature that automatically switches off the car internal lighting and ventilation fans when no calls are registered after a predetermined period of time.</i></p>
<i>Independent Service</i>	<p><i>Independent service is activated by a key switch either inside the elevator itself or on a centralized control panel in the lobby. When an elevator is placed on independent service, it will <b>no longer respond to hall calls.</b></i></p> <p><b><i>Independent service is useful when transporting large goods or moving groups of people between certain floors.</i></b></p>
<i>Attendant Service Control</i>	<p><i>In attendant service, if the <b>Close Door Button is released before the doors are closed, the doors will reopen. The car will start immediately after the doors have been closed.</b></i></p>
<i>Fire Alarm Operation Mode</i>	<p><i>When the building's fire or smoke detectors are activated, all calls are cancelled and all the elevators will immediately travel to the <b>main lobby</b> and park there with the door fully open.</i></p>



# FEATURES OF LIFT- S.A.M.B.

<i>Features of Lift</i>	<i>Description</i>
<i>Emergency power operational mode with Generator Set Power Supply</i>	<i>Activates when power supply failure.</i>
<i>Multibeam Light . (It can be of 32 beam, 64 beam, etc.)</i>	<i>A curtain ray project across the car entrance and operate such that the doors will return to the open position when the ray is cut off by an obstruction.</i>
<i>Overload Protection Device</i>	<i>When the car load exceeds the capacity or rated load of the elevator, the elevator will <b>stop operation</b> with the doors fully opened on that floor and a buzzer is annunciated. The buzzer will stop when a sufficient number of passengers have exited the car load is less than the rated load.</i>
<i>Emergency Car Light and Exhaust Fan</i>	<i>These device shall cut in and illuminate the car during a <b>power failure</b>. The emergency car light and exhaust fan shall be powered by a Ni-Cd battery which shall be able to provide illumination for <b>not less than 3 hours</b>.</i>
<i>3 or 2 Way Lift Intercom System Communication</i>	<i>Lift Intercom System Communication <b>communicates</b> between the master unit on ground Floor/Control Room, each lift car and the machine room.</i>



# FEATURES OF LIFT - SAMB.

<i>Features of Lift</i>	<i>Description</i>
<i>Lift supervisory board</i>	<i>A supervisory panel is one that can indicate where the various cars are in shafts . It can stop cars, It can send them to locations, do tests, perform safety functions when there is a fire or an emergency.</i>
<i>Battery Power Supply</i>	<i>A heavy duty 12V, rechargeable Nickel-Cadmium battery with trickle charger unit shall be provided for each lift to serve the alarm bell, lift intercom system, emergency lighting and ventilation fan, via a changeover contact upon failure of normal electrical power supply.</i>
<i>Fan Switch</i>	<i>On/Off the fan manually.</i>
<i>Light Switch</i>	<i>On/Off the light manually.</i>
<i>Levelling accuracy</i>	<i>Levelling accuracy to be within +/- 5 mm</i>
<i>Fire Rating for Landing Door</i>	<i>i) Protected Lobbies – 1 hr. ii) Unprotected Lobbies – 2 hrs.</i>



<i>Features of Lift</i>	<i>Description</i>
<p><b><i>EBOPS</i></b></p>	<p><i>Emergency Battery Operated Power Supply &amp; automatic rescue device.</i></p> <p><i><b>EBOPS</b> is an emergency battery operated power supply for use in passenger lifts to supply to the ventilation fans, lights and emergency bells etc., in the event of a power failure.</i></p> <p><i>Change-over from mains to inverter are all fully automatic in the event of power failure</i></p>
<p><b><i>Automatic Rescue Device/ARD.</i></b></p>	<p><i>The Lifts shall be provided with electronically controlled automatic rescue device. The device shall operate automatically to take the lift car to the nearest floor and open the door in case of <b>power failure</b>. The unit shall be wired and assembled in an independent box and shall be supplied complete with battery charger.</i></p> <p><i>•To supply back up power for bringing the lift to the nearest floor and opening the lift door</i></p>
<p><b><i>150mm wide stainless steel c/w rubber crash / bumper rails.</i></b></p> <p><b><i>(For goods lift only)</i></b></p>	<p><i>150mm wide stainless steel c/w rubber crash / bumper rails shall be provided at suitable heights all round the lift car.</i></p>



