

PROJECT HEALTH CHECK (PHC) 2012



outline

- **Introduction to JKR's Project Health Check (PHC)**
- **JKR's Project Health Check Procedure**
- **Example: questionnaire.**
- **Project Health Check's Program**

Objective of the PHC

- Is a comprehensive review to assist you in conforming that your project is achieving what it is designed to do
- Is a short diagnose to establish project's status
- Is a short independent assessment of how well the project is performing in accordance to its objectives and standards
- To identify the strength and weakness of the project through PHC questionnaire



Output of the PHC

- Short summary report identifying the project strength and areas requiring improvement
- Rating of potential impact of issues to the project performance
- Suggested action to be taken by the project team
- Follow-up date of revisiting and project's check-up.



Why are health check needed??

- Most project are sick and do not even realize the extent of their sickness
- High percentage of project finish behind schedule and/or over budget
- Enterprise geospatial project statistics may be worse due to increased complexity, data and integration issues





Benefit of PHC

- **Reducing** the risk of project failing
- **Improve** quality of project
- **Early warning** detection and recovery development
- **Adequacy** assessment to project control, monitoring and reporting
- Faulty rectification
- To **minimize** the deviant of project from the course



PHC practitioner

- An individual with strong competencies in project management
- Preferably certified as registered project management (min level 5-Reg.PM or J48)
- Leads Health Check Team



Terminology- Green Team

- The coaching/mentoring unit appointed by PROKOM which assists in the promotion of effective use of standard project management practices and tools by all JKR project managers.
- They react to requests for assistance by JKR project managers, or by referral from the project practitioner.

Terminology- Red Team

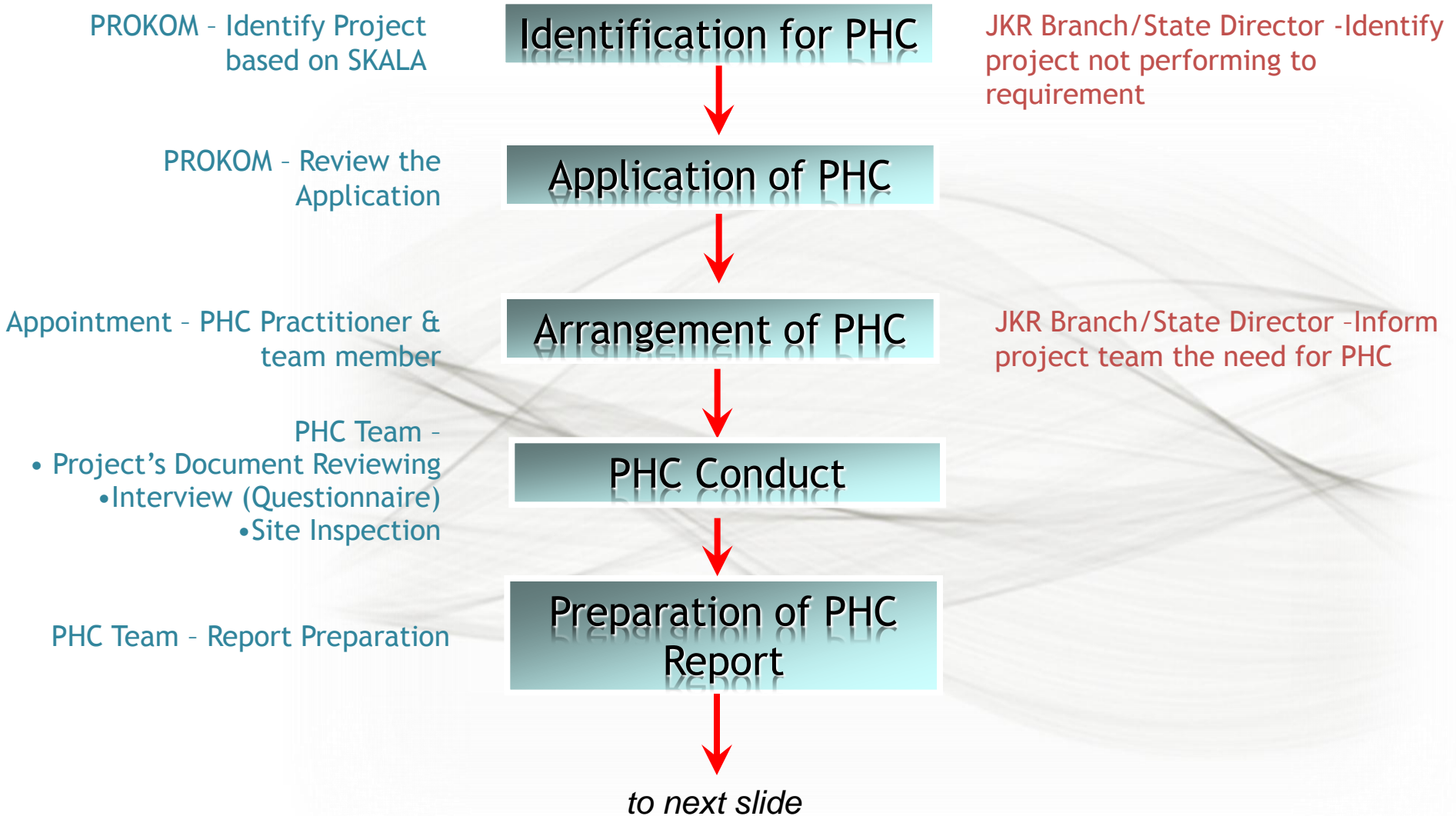
- A small team of highly experienced people who respond to a project with major problems,
- Would be expected to apply radical solutions including changes of project personnel.
- The red team will those appointed by JKR top management.

Key Stakeholder

- JKR Senior Management
- SBU Directors
- PROKOM
- Project Health Check Practitioner
- Project Manager
- Customers (in terms of results)

- Customers (in terms of results)
- Project Manager
- Project Health Check Practitioner
- PROKOM
- SBU Directors

PHC procedure



PHC procedure

from previous slide



PROKOM -To distribute PHC report to relevant Mgmt/Branch/State Director

Distribution of PHC Report

JKR Branch/State Director -Fully responsible whether to follow PHC suggestion



PROKOM - Suggest way to handle situation. Identify Green Team or top management appoint Red Team (if required)

PHC Follow-up

Project Team - to monitor and control project performance



PROKOM - to capture and document lesson learned from the project

PHC Close-Out

Project Team - to capture all the lesson learned from the project



End

Diagnosis

Healthy

Project is performing
to specification

Observation

looks OK but some
aspects need to be
monitored

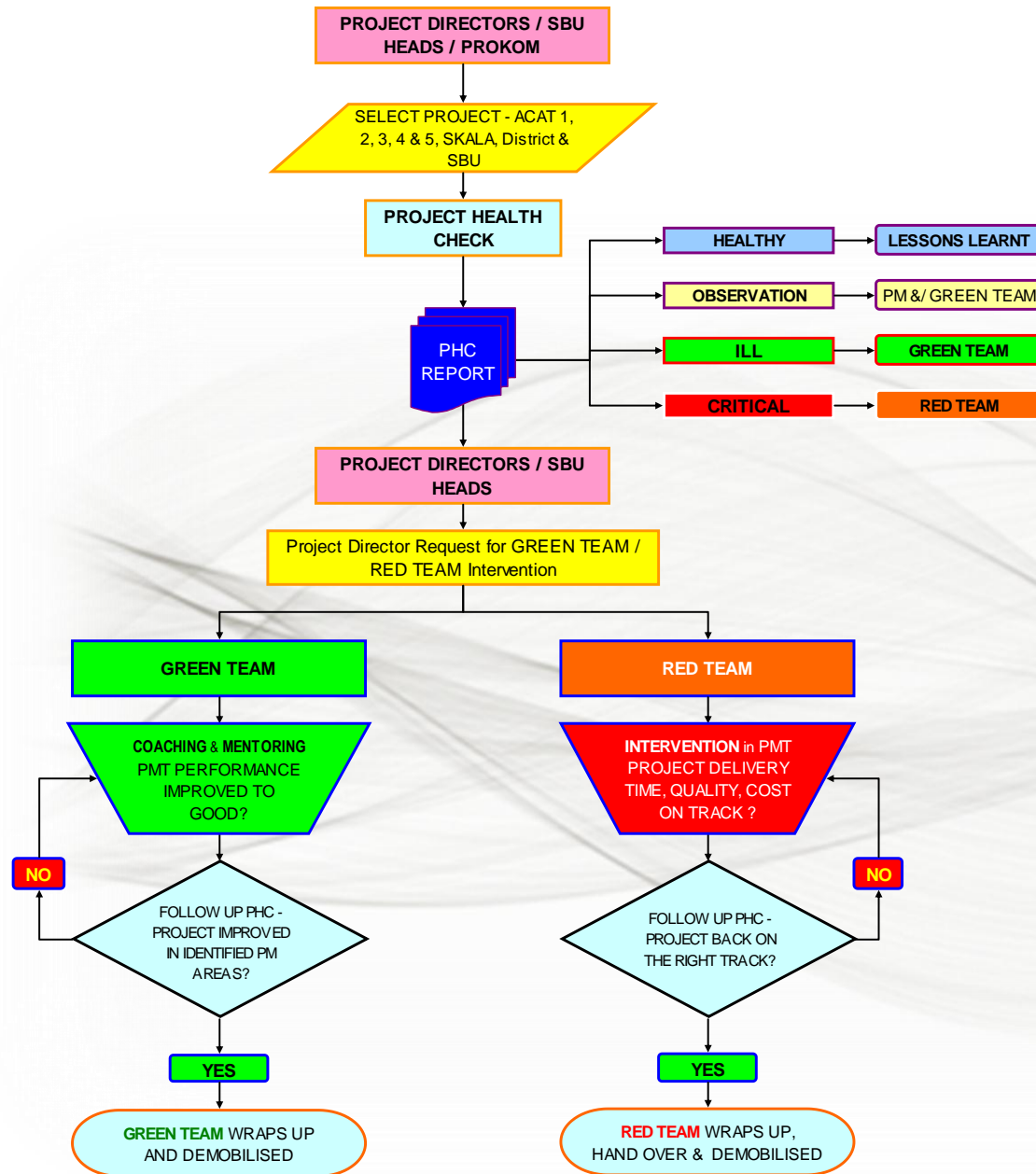
Serious Condition

immediate action to
resuscitate
(Green Team)

Critical Condition

probably beyond
recovery
(Red Team)

PHC Process



Note that.....

**The responsibility for action remains with the
project manager and responsible of SBU/related
Branch**

When & how often to use PHC?

- The process can be applied at any point in the project life cycle
- There would be advantages in undertaking a Health Check early in the life of a project
- It is probably best applied prior to a project handover or at the commencement of a new project phase
- It is suggested that a maximum of 4 Health Checks in the life a 2 -3 year project would be adequate

Note that.....

PHC is strictly not AUDITING process

How does this differ from an audit?

- It is not about **compliance**, it is about **project performance**;
- It is not about **criticism**, its about **facilitating better outcomes**;
- It looks at the **current status** and tests the **potential**;
- It **increases** awareness of good PM practices;
- It is about **the project** not the individuals;
- It is not about a **lengthy** process, its in and out in about 2 hours;
- It is a process a Project Manager should welcomes as **performance benchmark**.

Important note.....

PHC are meant to be seen by project managers as **friendly activities which can support through immediate advice, or by referral to mentoring/coaching support.**

Project Health Check's Program 2012

- **PHC Practitioner Training Program**
 - **PHC Mentoring Program**
- 

Thank You



prokom 
PROJECT MANAGEMENT EXCELLENCE

