



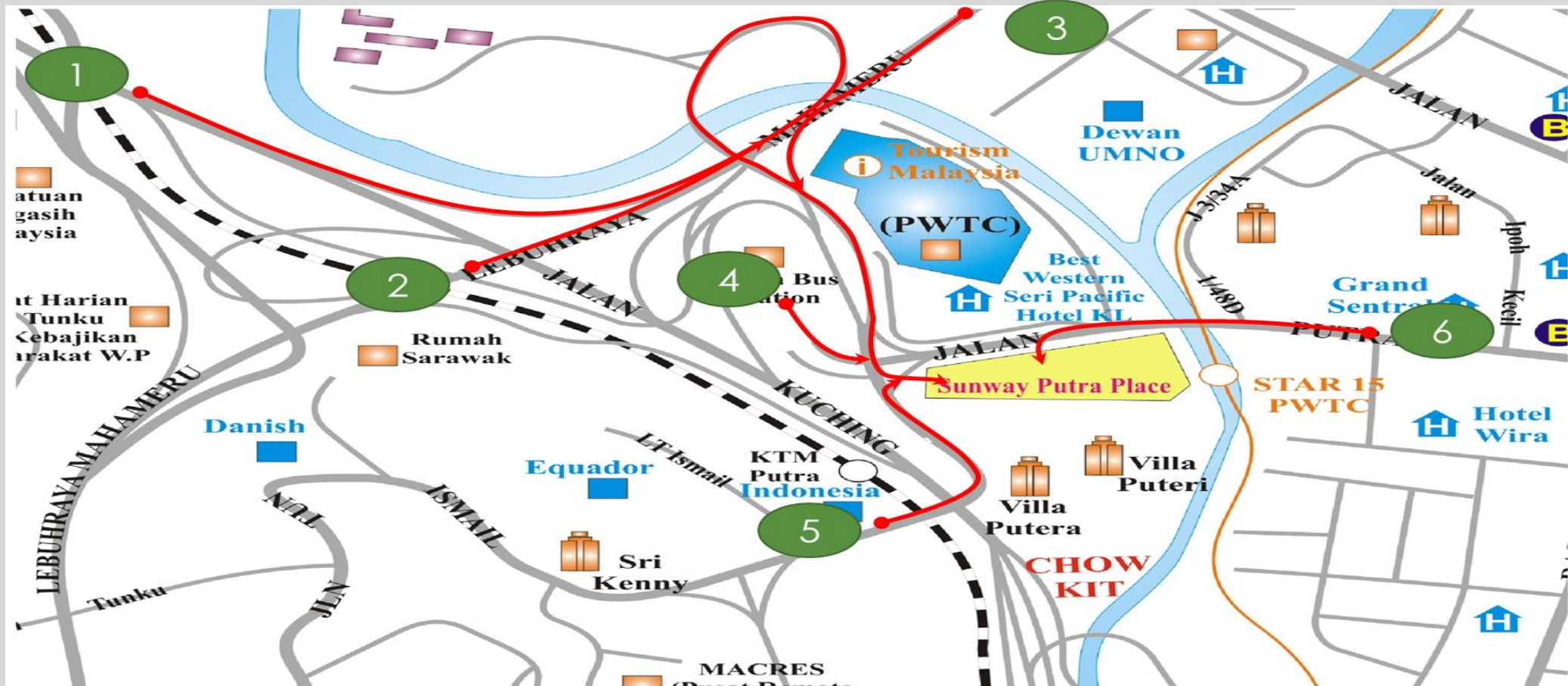
TRIP DISTRIBUTION

Ir. Asiah Ismail
Bahagian Kejuruteraan Trafik
Cawangan Jalan
JKR Malaysia
(09 FEBRUARY 2021)

What is Trip Distribution?

- Previously, generate trips according to the type of proposed development.
- Now, distribute to the road network system
- Based on:
 - existing directional distribution
 - location of the ingress and egress points of the proposed development.
 - Any form of traffic management that is applied i.e. one-way systems or no entry.

Catchment (Ingress)



Catchment (Egress)



Example 1



-Tanah Rata – Ringlelet – Tapah

-Taman Tringkap
- Kampung Raja
-Simpang Pulai

Example 1



-Tanah Rata – Ringlelet – Tapah

-Taman Tringkap
-Kampung Raja
-Simpang Pulai

EXISTING TRAFFIC VOLUMES DURING MORNING PEAK HOUR
(AM PEAK)

Example 1

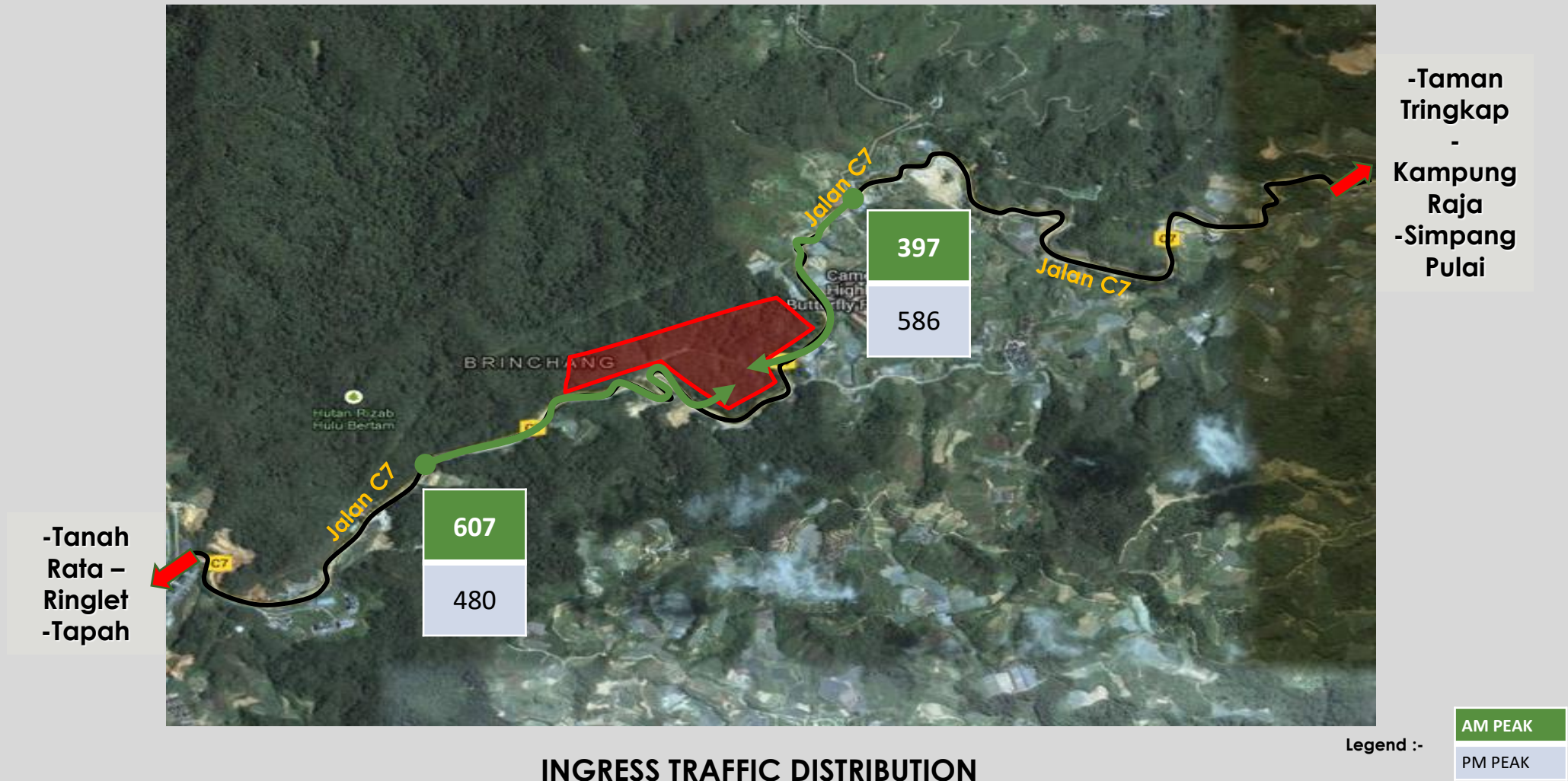


-Taman
Tringkap
-
Kampung
Raja
-Simpang
Pulai

-Tanah
Rata –
Ringlet
-Tapah

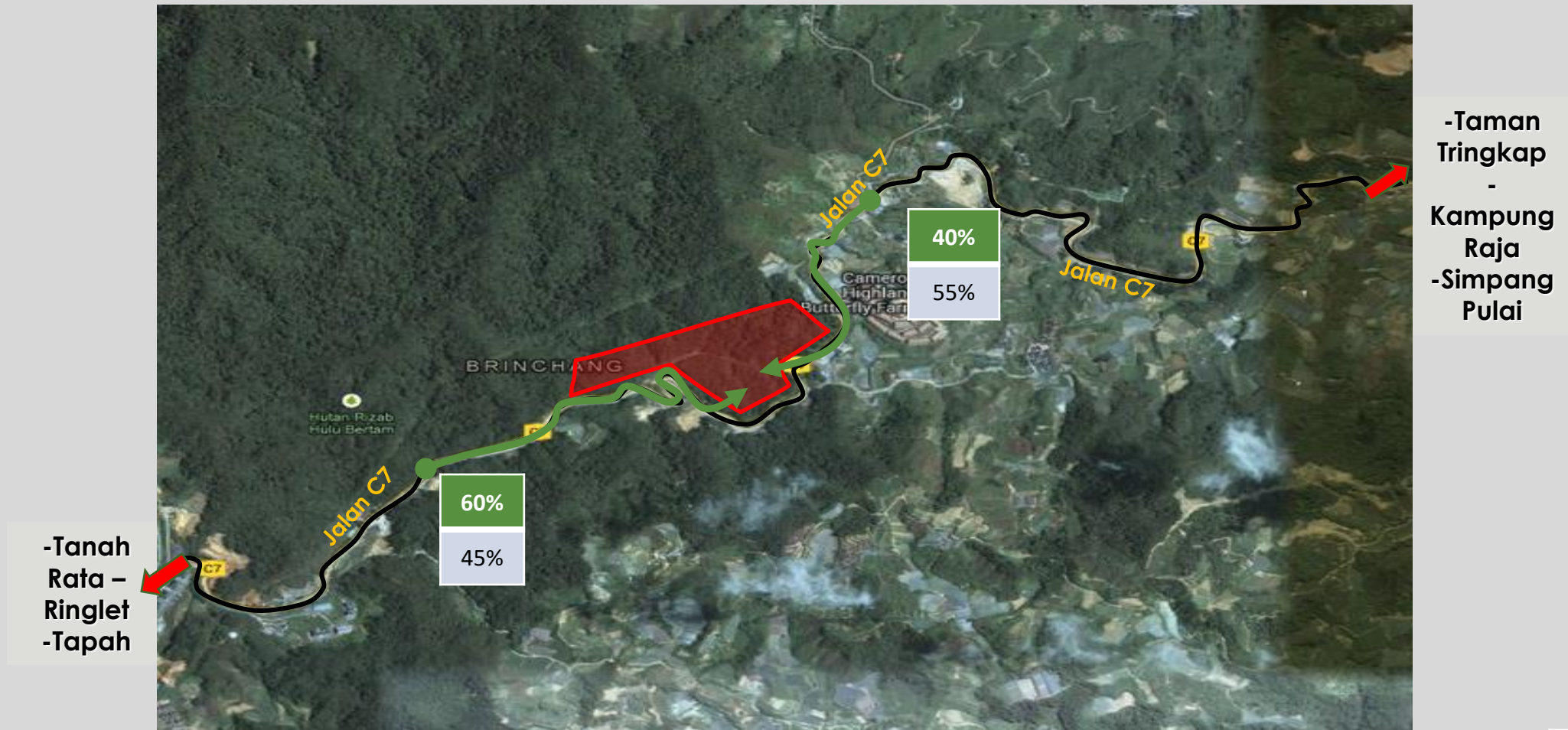
EXISTING TRAFFIC VOLUMES DURING EVENING PEAK HOUR
(PM PEAK)

Example 1



INGRESS TRAFFIC DISTRIBUTION

Example 1



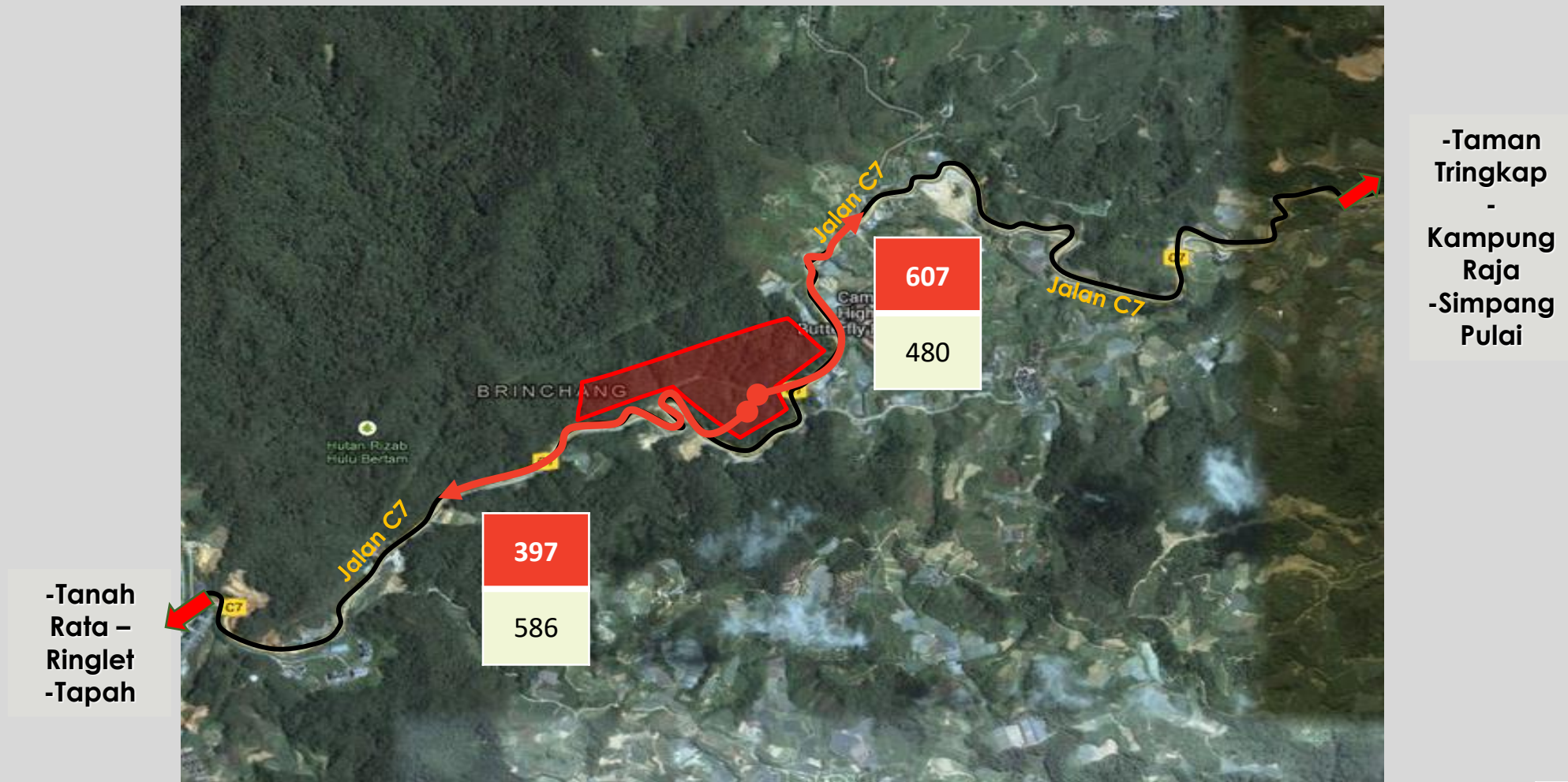
-Tanah Rata - Ringlelet - Tapah

-Taman Tringkap - Kampung Raja - Simpang Pulai

INGRESS TRAFFIC DISTRIBUTION

Legend :-
AM PEAK
PM PEAK

Example 1



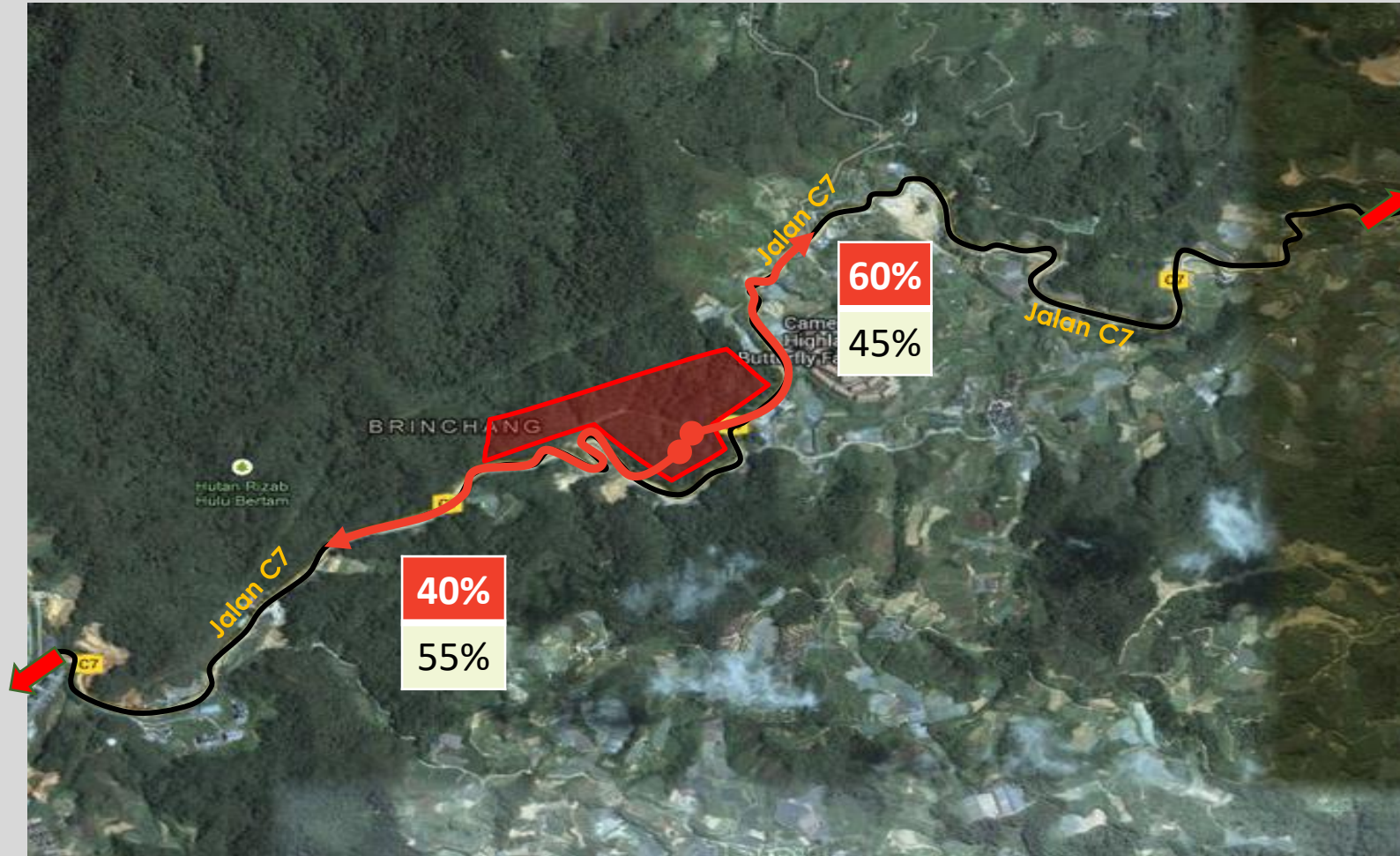
-Tanah Rata - Ringlet - Tapah

-Taman Tringkap - Kampung Raja - Simpang Pulai

EGRESS TRAFFIC DISTRIBUTION

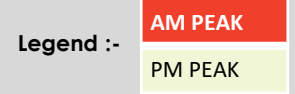
Legend :-
AM PEAK
PM PEAK

Example 1



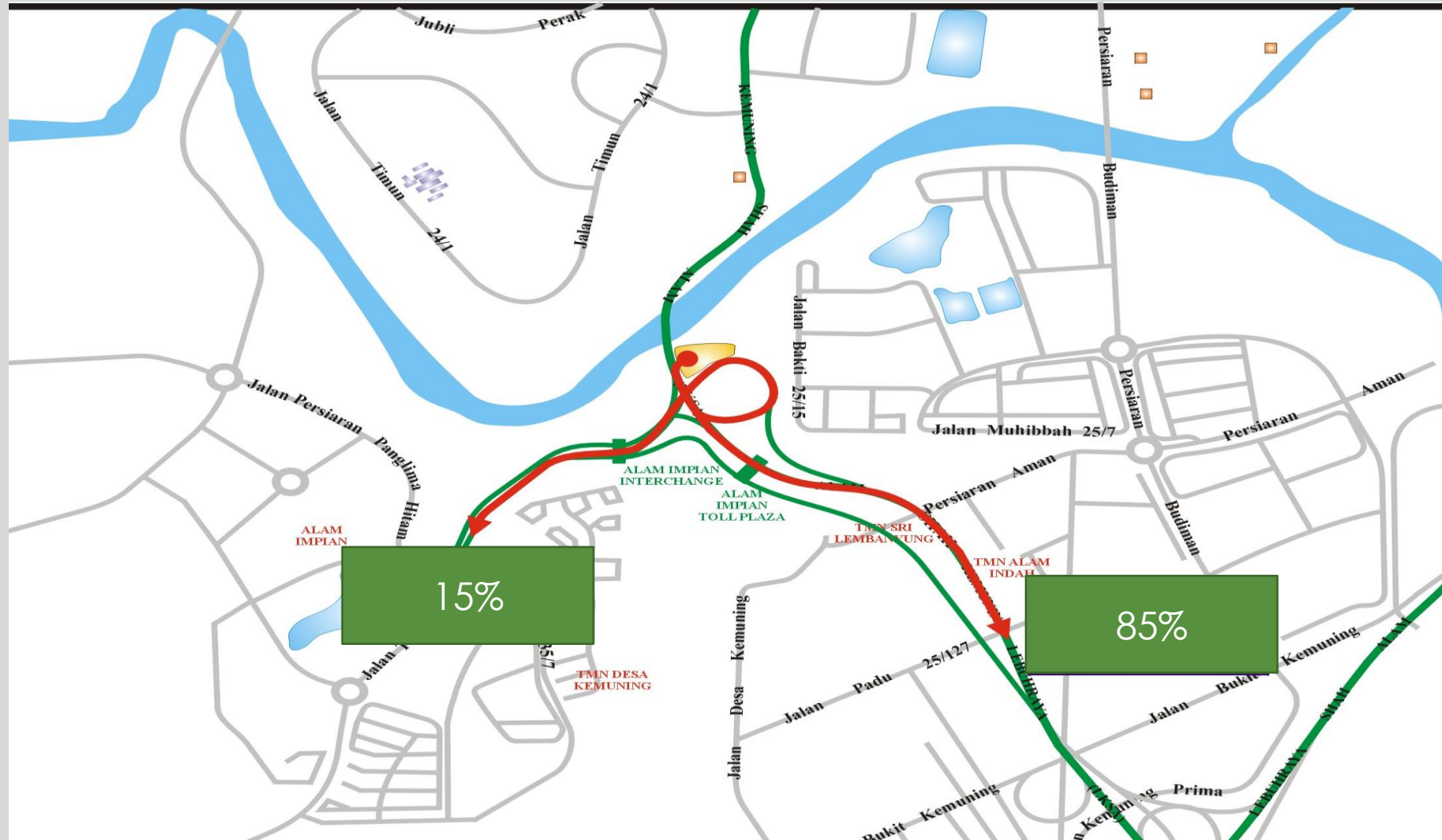
- Taman Tringkap
- Kampung Raja
- Simpang Pulai

- Tanah Rata – Ringlelet
- Tapah



EGRESS TRAFFIC DISTRIBUTION

Example 2

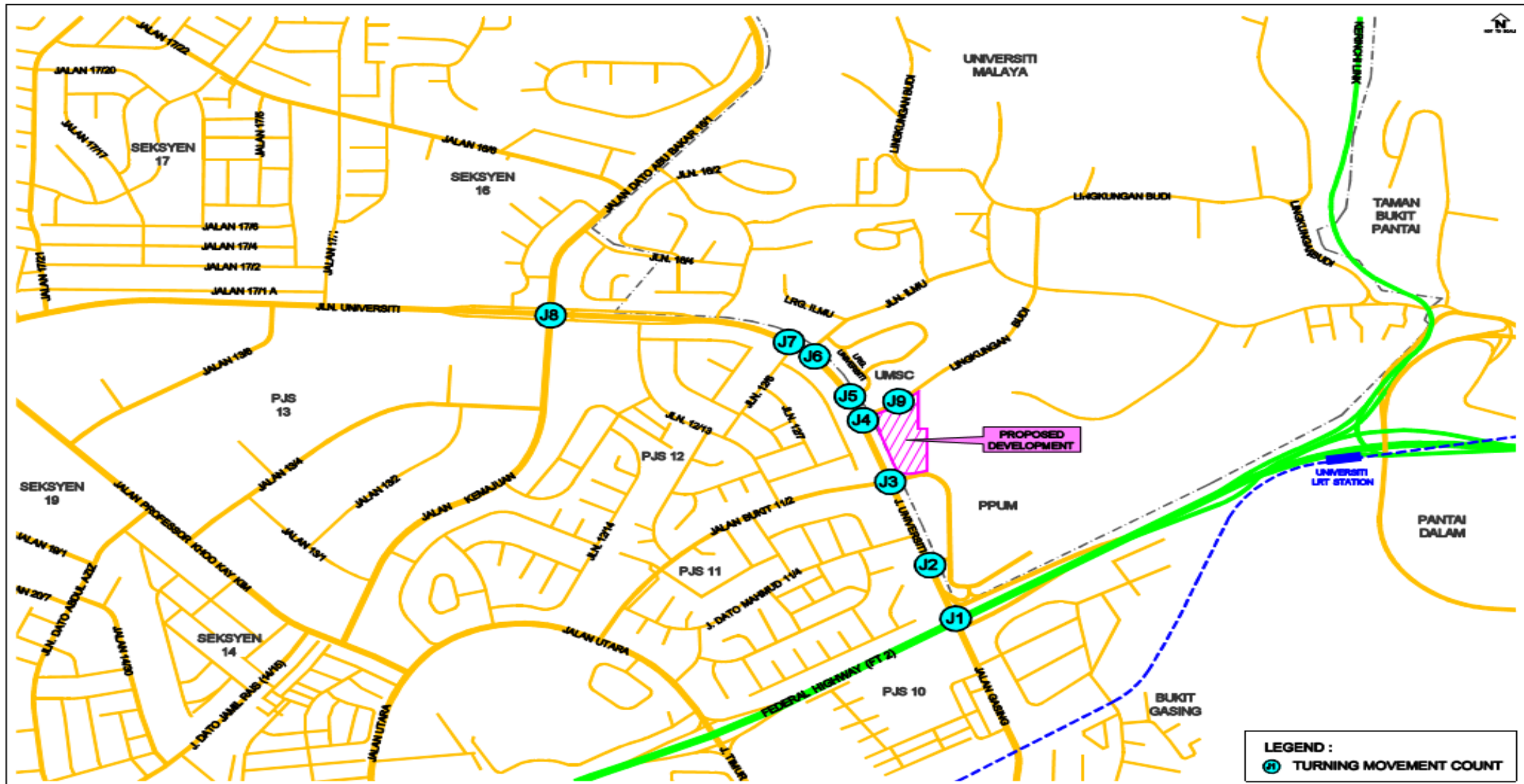


EGRESS TRAFFIC DISTRIBUTION



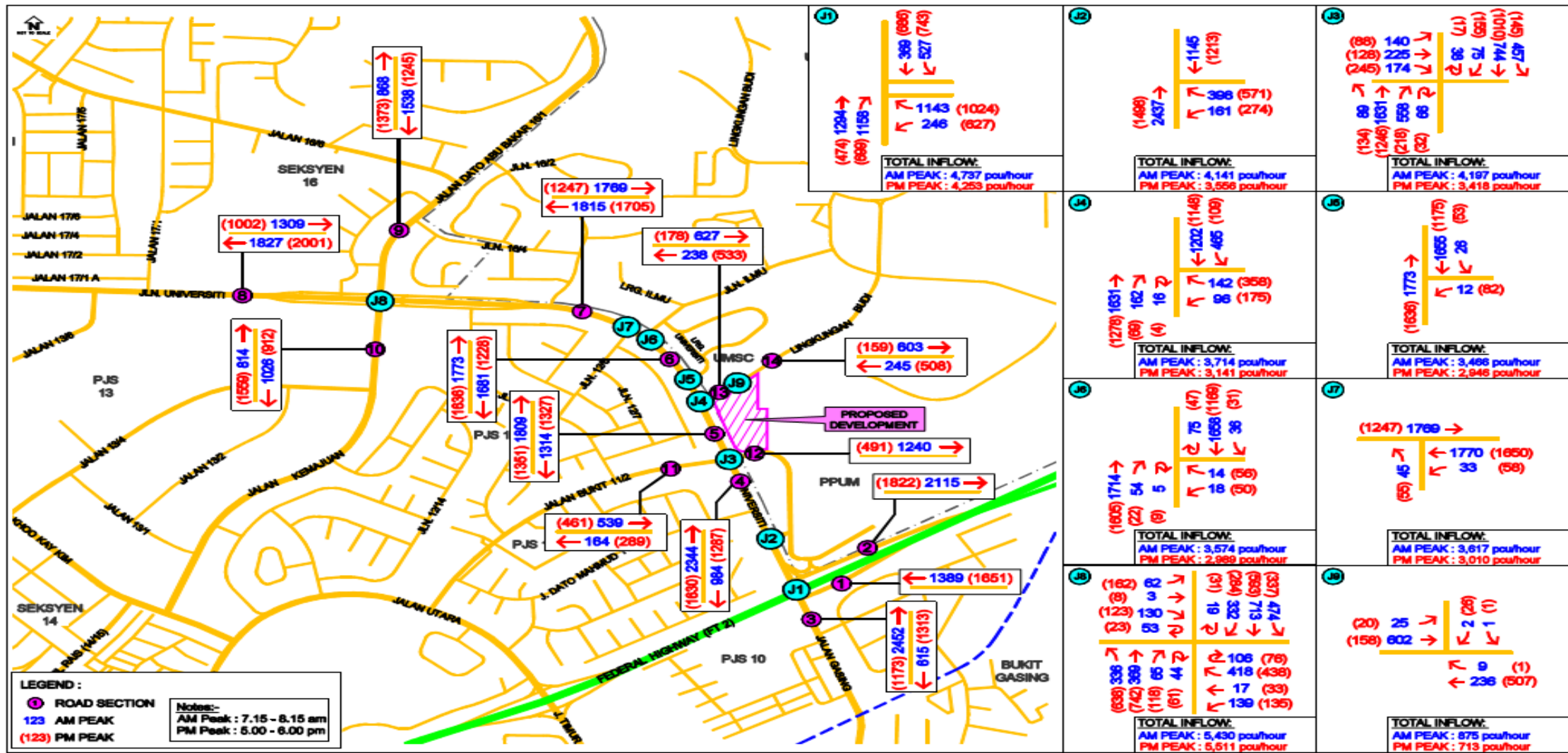
EXERCISE 1





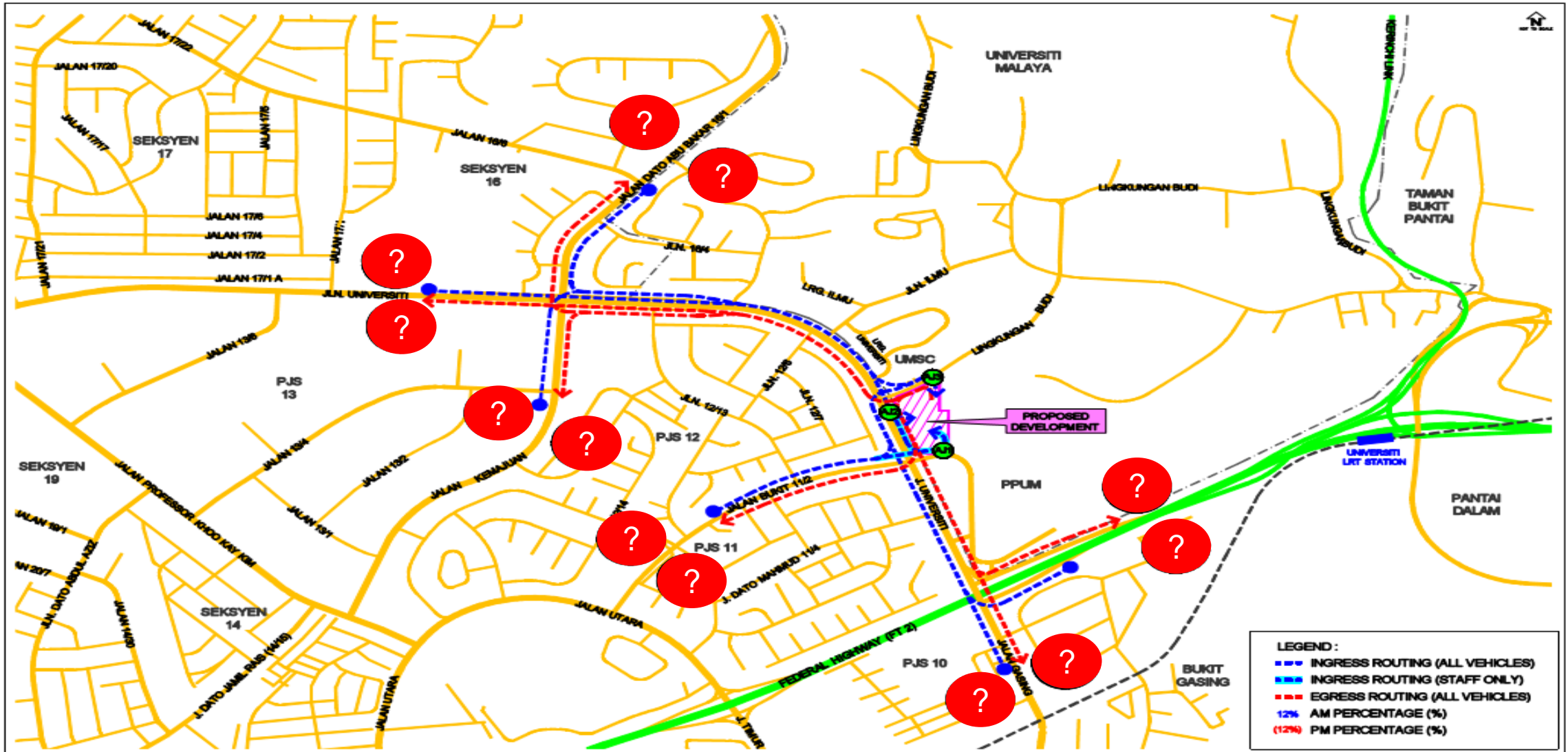
LOCATION OF SURVEY STATIONS

FIGURE 3.1



EXISTING MORNING AND EVENING PEAK HOUR TRAFFIC VOLUME (pcu/hour)

FIGURE 3.2



TRIP DISTRIBUTION PATTERN ?

FIGURE 4.2