

FELTEC SILICONE PAINT



Recommended Applications:

Exterior of concrete, mortar, light weight concrete cement and lime plastered buildings. (mineral substrate)

Application Method:

A. Surface Preparation

1. New cement wall must be completely dry and allowed to cure for at least 7 days.
2. All surface must be free of dust, soil, oil, and grease. Then only can proceed for the painting.

B. 1st Coat **Feltec HydroCoat**

1. **Feltec HydroCoat** is then applied to masonry / concrete wall by brush, roller and spray. However due to the nature of the product, for optimum performance, spray application is highly preferred and recommended.
2. **Feltec HydroCoat** is allowed to dry for at least 12hr prior to top coating, time is needed to permit the **Feltec HydroCoat** to react with substrate forming a hydrophobic zone.

C. Top coating

1. **Feltec Silicone Paint** is coated on earlier applied **Feltec HydroCoat**.
2. After 3-4 hours, a second coat is applied.
3. Application can be done by brush, roller, or spray.

Do's and Don't

1. **Feltec HydroCoat** after mixed with water as per our mixing ratio, must be used up within 24 hours to provide best efficiency.
2. Do not apply silicone paint when surrounding temperature is below 5°C.
3. **Feltec HydroCoat & Feltec Silicone Paint** only works with mineral substrates, it is not recommended to apply this product on any existing coatings.

Safety Precaution

1. Avoid contact with eyes, wearing eye and face protection. In case of eye contact, rinse with clean water and seek for medical advise.
2. If product is swallowed, seek for medical advice.
3. Do not pour left over paint into drain.
4. Store in the area beyond children's reach, in well ventilated shaded area.

Physical Data

Finish	Flat	Theoretical coverage	
Color	Wide range	Feltec HydroCoat	3-5 m ² /L
Components	1	Top Coat 1st coat	8 m ² /L
Number of coats	2	Top Coat 2nd coat	15 m ² /L
Solid %	48-50%		**coverage is dependent on substrate porosity**
Specific Gravity	1.45-1.48	Recoat time	3 - 4 hours
pH	8.0-9.0	Cleaning	Water
Drying time	Within 1 hour	Shelf Life	12 months (stored indoor below 30°C)

Packaging

20 Litres / Pail



FEDERAL PAINTS MANUFACTURING (M) SDN BHD (CO. NO. 381688-T)
21, PERSIARAN DESA AMPANG 1, TAMAN SRI AMPANG, 68000 AMPANG,
SELANGOR, MALAYSIA T: 603-42924684 F: 603-42915303
E: enquiry@federalpaint.com.my

FELTEC SILICONE PAINT

2017
F002



FELTEC SILICONE PAINT is a Silicone- acrylic emulsion masonry coating with outstanding weather resistant. It is designed for alkaline, water and weather resistant. **Feltec Silicone Paint** when coated on masonry, creates a water resistant barrier, it resists surface water absorption but allows the water vapor permeability. This special characteristic protects a variety of concrete building from weathering and creates a clean, beautiful and durable finishing.

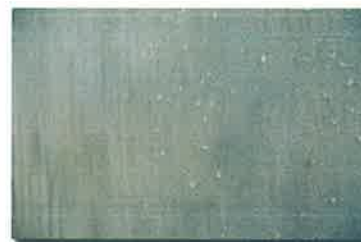
WHY choose Feltec Silicone Paint ?

1. As Water Repelling Barrier

Feltec HydroCoat which impregnating into pores of concrete shall react with substrate to form a hydrophobic zone and create a water repelling barrier. It blocks water from the inside, this property benefits in minimizing major problems of ordinary paints like efflorescence, damp rising and peeling.



Concrete wall without Feltec HydroCoat



Concrete wall with Feltec HydroCoat

2. As Breathable Paint

Feltec Silicone Paint also gives a paint film which is porous enough to allow water vapor to transmit and escape from the surface of wall. This minimizes paint failure caused by trapped moisture.



Normal External Acrylic



Silicone Paint System

Feltec Silicone Paint finished with appropriate coating system and conditions will resist to;



Efflorescence



Chalking



Fungus and Algae



Blistering and Peeling



Damp Rising and Patchiness