

**1 Days
Course**

10 CCD
Points

QLASSIC Awareness Course

Introduction

Quality Assessment System In Construction (QLASSIC) is an independent and objective method to measure and evaluate the workmanship quality of construction works based on the relevant approved standards. It enables the workmanship quality between construction projects to be relatively and quantitatively compared.

QLASSIC can serve as a tool for industry players to benchmark their quality performance against the industry standards. It can also serve as a quality yardstick for the construction industry.

More and more industry players had used the system, however yet to reach wider spectrum of industry segment.

Construction Industry Standard (CIS 7) on Quality Assessment System for Building Construction Works

CIS 7 sets out requirements on workmanship quality, tolerances and procedures for building construction works assessment. Generally the scope of this standard covers on workmanship quality and not on material quality, design quality or aesthetic preference.

This standard is divided into 4 main components:

- Architectural works
- Structural works
- Mechanical & Electrical (M&E) works
- External works

In this standard the weightage allocated for these components are further divided into 4 building categories:

Allocation of weightage for components of building construction work according to building category

Component	Residential Building		Non-Residential Building	
	Category A (Landed housing)	Category B (Stratified housing)	Category C Public/Commercial /Industrial building (%)	Category D Public/ Commercial / Industrial building (%)
Structural works	15%	20%	20%	20%
Architectural works	70%	60%	55%	50%
M&E works	5%	10%	15%	20%
External works	10%	10%	10%	10%
Total Score	100%	100%	100%	100%

QLASSIC Objective

The QLASSIC programme was designed and developed to enable the user to achieve any or combination of the following objectives:

- To benchmark the level of quality of the construction industry.
- To established a standard and system to assess construction quality.
- To be established as a KPI to assess the quality performance of contractors.
- To compile and analyze data for continuous improvement of construction quality.

QLASSIC Assessment

Generally the concept of QLASSIC assessments are as follows:

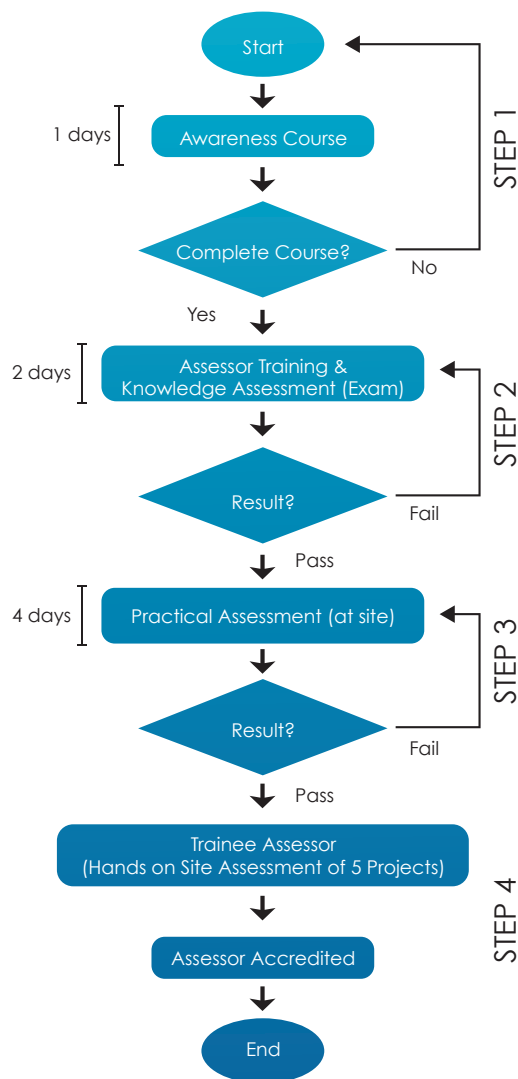
- 1. Pre-determined Sampling**
 - Prior to the site assessment, the assessor shall calculate the sampling size based on the specified sampling guideline.
- 2. Site Inspection**
 - To assess the constructed works at site against the industry standard.
- 3. One-time Assessment**
 - There are no re-assessment of works that are rectified.
- 4. Third Party Assessment**
 - Assessment shall be carried out by an independent & certified assessors.

Program

Speakers:
CIDB Qualified
Trainer

CIS 7: 2014
Quality Assessment
System for Building
Works

QLASSIC Assessor Accreditation Scheme



Registration Information

I / We wish to enroll the following person(s) to the QLASSIC Awareness Course.

Contact Person : _____

 Organization : _____
 Address : _____

Date : _____
 Training Date : _____
 Tel. No. : _____
 HP No. : _____
 Fax No. : _____
 Email : _____

.....
 Signature / Company Stamp



First Come, First Served!!!
 *Limited to 30 participants per course!!!

Registration Information

Fees :

RM300.00 per participant for valid CIDB green card holder

RM350.00 per participant for non-CIDB green card holder

Fee includes lunch, refreshments, and seminar notes

Payment :

- The fees must be paid one week before the event
- Company cheque, postal order, bankdraft & bankers cheque should be crossed & made payable to QLASSIC ACADEMY
- All payment shall be made directly to the training provider (refer Registration)

Substitution / Cancellation

Substitution is allowed for registered participants. Please note that all payments must be made one week prior to the event. No refund will be made for cancellation received after the date

Registration :

Send / fax the complete form (or photocopy) together with a copy of participants CIDB green card (where applicable) to :

Training Centre (Sepang)

QLASSIC Academy (Reg. No. 002616336V)

No. 1-16, Jalan Warisan Sentral 2, KIP Sentral, Kota Warisan, 43900 Sepang, Selangor Darul Ehsan

Fax : +603-8705 1804

Training Centre (Shah Alam)

QLASSIC Academy (Reg. No. 002616336V)

Unit No.446, PKNS Biz Point, No.67B, Tingkat 2, Jalan Plumbum P7/P, 40000 Shah Alam, Selangor Darul Ehsan

Fax: +603-5511 2613

Contact Person :

EN. AZRULHISYAM HUSSIN

Tel : 012-257 0045

Email : qlassic.academy@gmail.com

Website : www.qlassic-academy.com

For further inquiries, please contact :

CIDB Malaysia, Technology Division

Tel : 03 - 4047 7329 / 335 / 336

www.cidb.gov.my

**1st Come
1st Served!!!**

.....
 Limited to
 30 participants
 per course!!!

No.	Name of Participants (Capital Letter)	NRIC	Designation	Tel / Email