

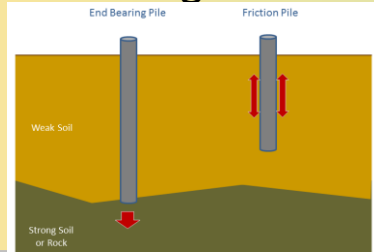
# PILED FOUNDATION

## DEFINITION

Foundation system that transfers loads to a deeper and competent soil layer

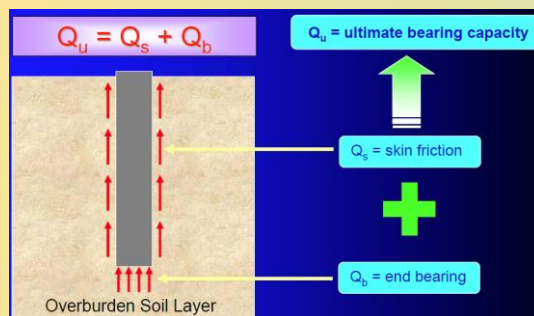
## PILE CLASSIFICATION

- Friction Pile
- End Bearing Pile

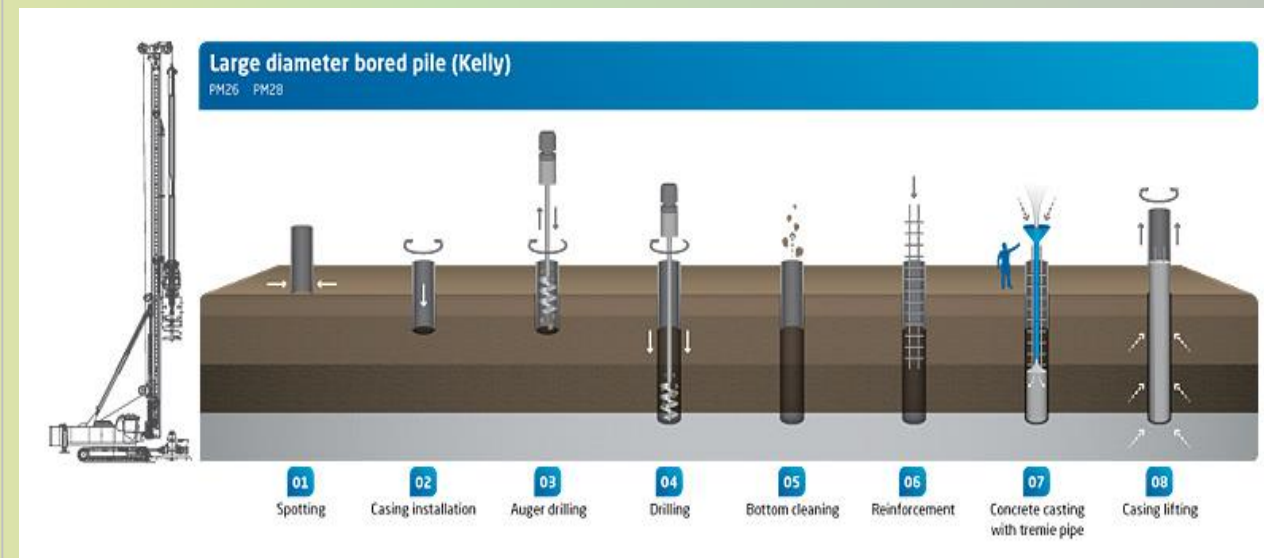


## PILE DESIGN

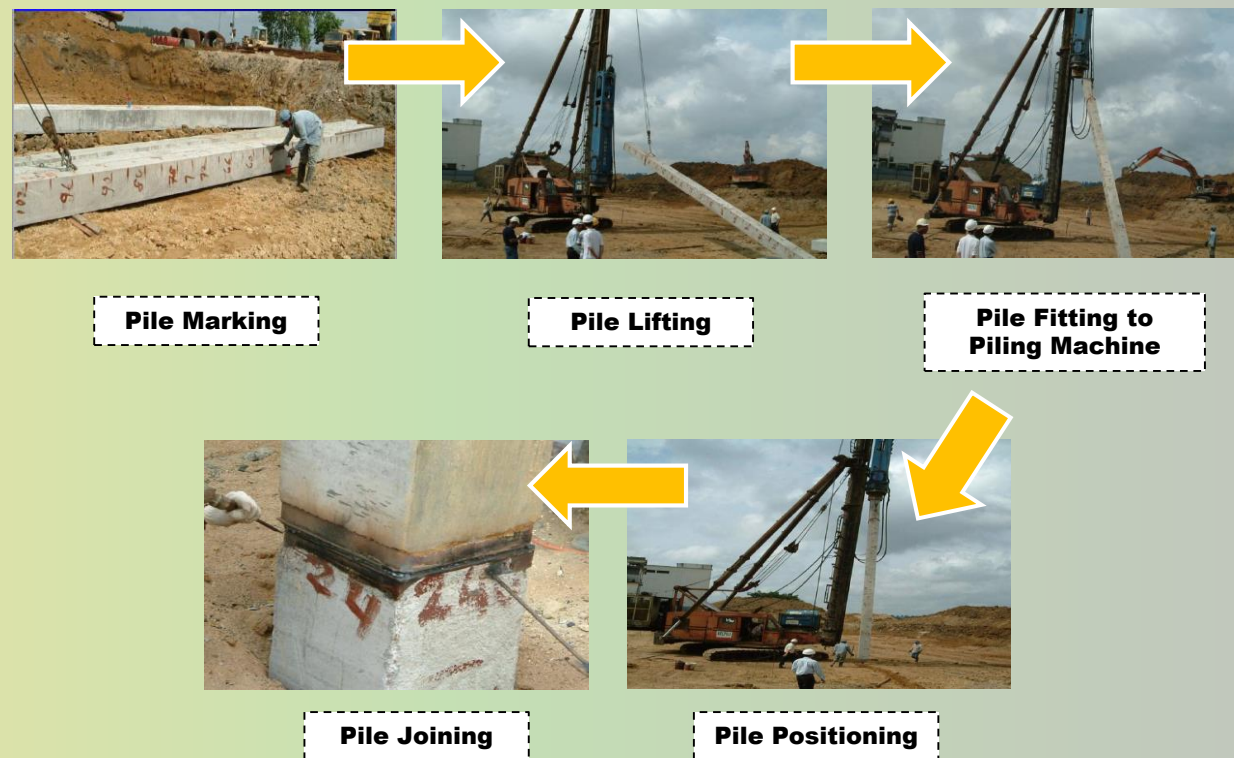
- Allowable Structural Capacity
- Allowable Geotechnical Capacity



## CONSTRUCTION OF BORED PILE



## CONSTRUCTION OF R.C SQUARE PILE



## TYPE OF PILE

- R.C Square Pile
- Boredpiles
- Micropiles
- Caisson Piles
- Treated Timber Piles
- Bakau Piles
- Pre-Stressed Concrete Spun Piles
- Steel Piles

## ACCEPTANCE OF SETTLEMENT CRITERIA

Based on Standard Specification for Road Works Section 10: Piling Works. Unless otherwise specified the pile tested shall be deemed to have failed if:-

- The residual settlement after removal of the test load at working load exceeds [(diameter of pile or diagonal width for non-circular pile /120) + 4]mm or 12.50mm whichever is the lower value; or
- The total settlement under the Working Load exceeds 12.50mm; or
- The total settlement under twice the Working Load exceeds 38.0mm, or 10% of pile diameter/width whichever is the lower value